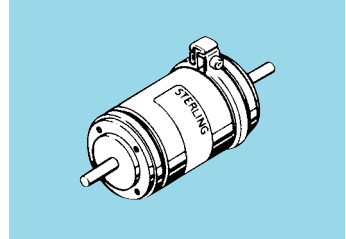
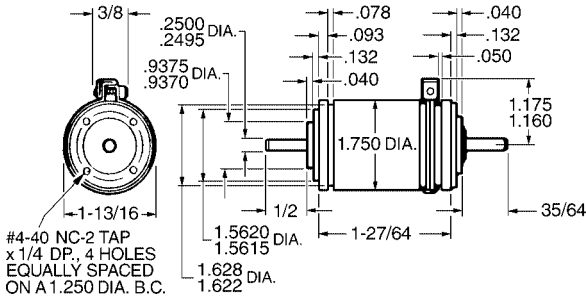


■ 1-3/4 INCH OUTSIDE DIAMETER

■ PAT. NO. 2,892,357



SPECIFICATIONS:

- Maximum Backlash – 0°30'
- Maximum Starting Torque – .02 oz. in.
- Rated Output Torque – 54 oz. in.

CATALOG NUMBER DESIGNATION:

S 9 1 1 8 A - T 6 0 2 8 -

Insert Dash No. from table below.

Example: S9118A-T6028-16 has a 102.24: 1 ratio.

- NOTES:** (1) "S" indicates output rotates in the same direction as input; "R" denotes opposite rotation.
(2) Ball bearings used throughout.

Dash No.	Ratio To 1	Rotation
-01	8.05	S
-02	10.11	S
-03	13.00	S
-04	18.78	R
-05	23.59	R
-06	24.14	R
-07	30.33	R
-08	39.00	R
-09	43.82	S
-10	55.05	S
-11	56.33	S
-12	70.78	S
-13	72.43	S
-14	91.00	S
-15	117.00	S
-16	102.24	R

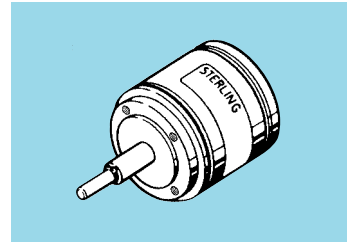
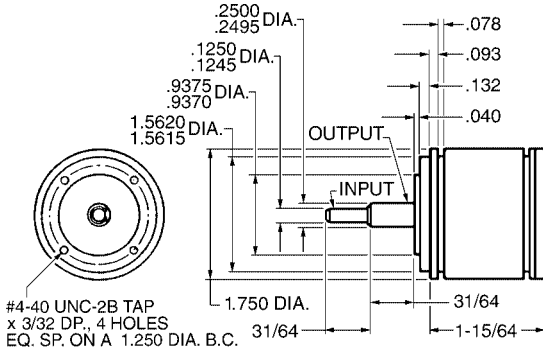
Dash No.	Ratio To 1	Rotation
-17	128.45	R
-18	131.44	R
-19	165.15	R
-20	169.00	R
-21	212.33	R
-22	217.29	R
-23	273.00	R
-24	351.00	R
-25	238.55	S
-26	299.71	S
-27	306.70	S
-28	385.35	S
-29	394.33	S
-30	495.44	S
-31	507.00	S
-32	637.00	S

Dash No.	Ratio To 1	Rotation
-33	651.86	S
-34	819.00	S
-35	1053.00	S
-36	556.61	R
-37	699.33	R
-38	715.64	R
-39	899.14	R
-40	920.11	R
-41	1156.04	R
-42	1183.00	R
-43	1486.33	R
-44	1521.00	R
-45	1911.00	R
-46	1955.57	R
-47	2457.00	R
-48	3159.00	R

Zero backlash, lower backlash, exact ratios, etc., are available on special order.
For additional information, see preceding technical data and special speed reducer pages.

■ 1-3/4 INCH OUTSIDE DIAMETER

■ PAT. NO. 2,943,507



SPECIFICATIONS:

- Maximum Backlash – 0°30'
- Maximum Starting Torque – .02 oz. in.
- Rated Output Torque – 54 oz. in.

CATALOG NUMBER DESIGNATION:

S 9 1 1 8 A - T 6 1 2 8 -

Insert Dash No. from table below.
Example: S9118A-T6128-16 has a 102.24: 1 ratio.

- NOTES:** (1) "S" indicates output rotates in the same direction as input; "R" denotes opposite rotation.
(2) Ball bearings used throughout.

Dash No.	Ratio To 1	Rotation
-01	8.05	S
-02	10.11	S
-03	13.00	S
-04	18.78	R
-05	23.59	R
-06	24.14	R
-07	30.33	R
-08	39.00	R
-09	43.82	S
-10	55.05	S
-11	56.33	S
-12	70.78	S
-13	72.43	S
-14	91.00	S
-15	117.00	S
-16	102.24	R

Dash No.	Ratio To 1	Rotation
-17	128.45	R
-18	131.44	R
-19	165.15	R
-20	169.00	R
-21	212.33	R
-22	217.29	R
-23	273.00	R
-24	351.00	R
-25	238.55	S
-26	299.71	S
-27	306.70	S
-28	385.35	S
-29	394.33	S
-30	495.44	S
-31	507.00	S
-32	637.00	S

Dash No.	Ratio To 1	Rotation
-33	651.86	S
-34	819.00	S
-35	1053.00	S
-36	556.61	R
-37	699.33	R
-38	715.64	R
-39	899.14	R
-40	920.11	R
-41	1156.04	R
-42	1183.00	R
-43	1486.33	R
-44	1521.00	R
-45	1911.00	R
-46	1955.57	R
-47	2457.00	R
-48	3159.00	R

Zero backlash, lower backlash, exact ratios, etc., are available on special order.

For additional information, see preceding technical data and special speed reducer pages.