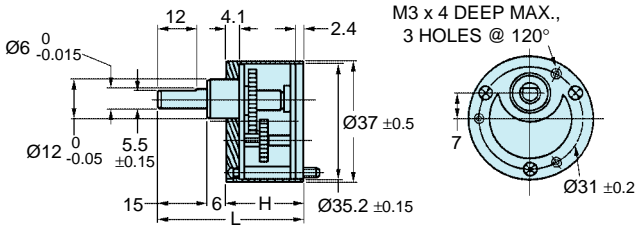
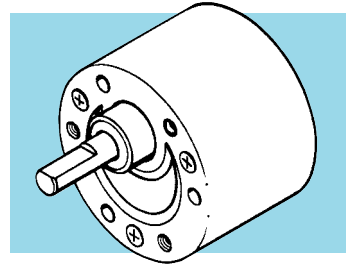




### ■ 37 mm DIAMETER, ROUND HOUSING



The projections shown are per ISO convention.



#### FEATURES:

- Small size and high output
- The input and output shafts have different center lines
- Decreased noise and smooth rotation due to the use of high-precision gears
- Stable quality
- Excellent durability

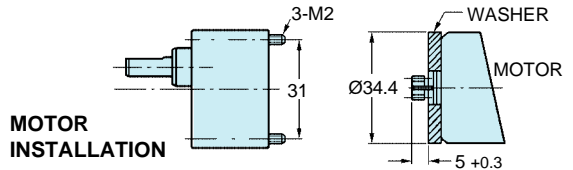
#### SPECIFICATIONS:

Radial Play of Shaft –  $\leq 0.1$  mm

Thrust Play of Shaft –  $\leq 0.35$  mm

Operating Temperature –  $-10^\circ\text{C}$  to  $+60^\circ\text{C}$

These gearheads can be used as replacements for **D33S35M...** & **D33S57M35A...** Series gearmotors.



**MATERIAL:** Gears – Steel

Housing – Die Cast Aluminum

#### GEARHEADS

Catalog Number	Gear Ratio to 1	H	L	Efficiency %	Maximum Torque N • m (lb. in.)	
					Continuous	Momentary
A 2G23MA0006	6	19	40	81	0.10 (0.9)	0.29 (2.6)
A 2G23MA0010	10					
A 2G23MA0018	18	21.5	42.5	73	0.10 (0.9)	0.29 (2.6)
A 2G23MA0030	30					
A 2G23MA0050	50	24	45	66	0.29 (2.6)	0.88 (7.8)
A 2G23MA0060	60					
A 2G23MA0075	75					
A 2G23MA0100	100					
A 2G23MA0120	120	26.5	47.5	59	0.59 (5.2)	1.77 (15.7)
A 2G23MA0150	150					
A 2G23MA0180	180					

Continued on the next page

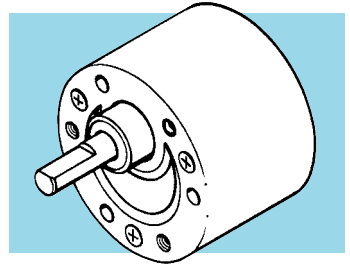
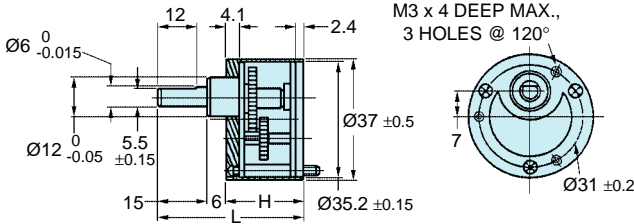
#### MATING MOTOR PINION FOR GEARHEADS

**MATERIAL:** Brass

Catalog Number	Number of Teeth	Module	P.D.	O.D.	Bore -0.02 -0.04	Face Width
A 1B 8MYS05010	10	0.5	5.24	6.24	2	4



### ■ 37 mm DIAMETER, ROUND HOUSING



The projections shown are per ISO convention.

#### FEATURES:

- Small size and high output
- The input and output shafts have different center lines
- Decreased noise and smooth rotation due to the use of high-precision gears
- Stable quality
- Excellent durability

#### SPECIFICATIONS:

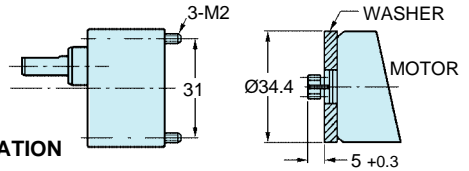
Radial Play of Shaft –  $\leq 0.1$  mm

Thrust Play of Shaft –  $\leq 0.35$  mm

Operating Temperature –  $-10^{\circ}\text{C}$  to  $+60^{\circ}\text{C}$

These gearheads can be used as replacements for **D33S35M...** & **D33S57M35A...** Series gearmotors.

#### MOTOR INSTALLATION



**MATERIAL:** Gears – Steel

Housing – Die Cast Aluminum

#### GEARHEADS

Catalog Number	Gear Ratio to 1	H	L	Efficiency %	Maximum Torque N • m (lb. in.)	
					Continuous	Momentary
A 2G23MA0200 A 2G23MA0250 A 2G23MA0300	200 250 300	26.5	47.5	59	0.59 (5.2)	1.77 (15.7)
A 2G23MA0400 A 2G23MA0500 A 2G23MA0600 A 2G23MA0750 A 2G23MA1000	400 500 600 750 1000					
A 2G23MA1500 A 2G23MA3000	1500 3000	31.5	52.5	48		

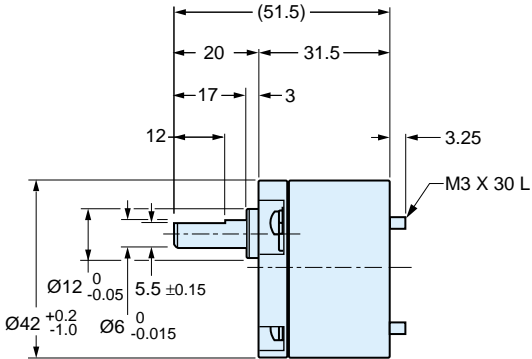
#### MATING MOTOR PINION FOR GEARHEADS

**MATERIAL:** Brass

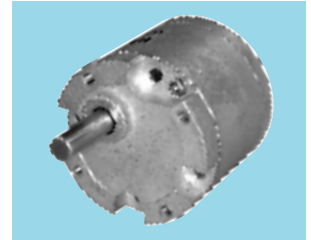
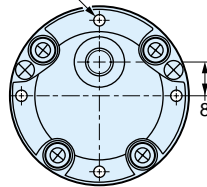
Catalog Number	Number of Teeth	Module	P.D.	O.D.	Bore -0.02 -0.04	Face Width
A 1B 8MYS05010	10	0.5	5.24	6.24	2	4



■ 42 mm DIAMETER ROUND HOUSING



M3 X 4 DEEP MAX.,  
4 HOLES @ 90°



These gearheads can be used as replacements for D33S38M... Series gearmotors. See index.

The projections shown are per ISO convention.

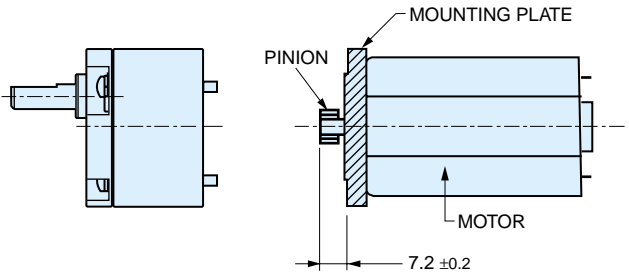
**FEATURES:**

- Small size and high output
- The input and output shafts have different center lines
- Decreased noise and smooth rotation due to the use of high-precision gears
- Stable quality
- Excellent durability

**SPECIFICATIONS:**

- Radial Play of Shaft – ≤ 0.1 mm
- Thrust Play of Shaft – ≤ 0.35 mm
- Operating Temperature – -10°C to +60°C

**MOTOR INSTALLATION**



**MATERIAL:** Housing – Die Cast Aluminum  
Gears – Steel

**GEARHEADS**

Catalog Number	Gear Ratio to 1	Efficiency %	Maximum Continuous Torque N • m (lb. in.)
A 2G33M0011	11.73	73	.29 (2.57)
A 2G33M0030	30	66	.49 (4.34)
A 2G33M0033	33.16		.88 (7.79)
A 2G33M0050	50		.98 (8.67)
A 2G33M0062	62.31		
A 2G33M0090	90		

Continued on the next page

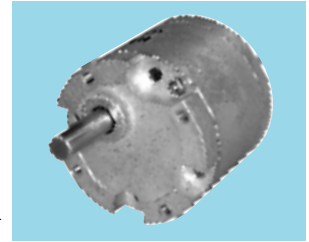
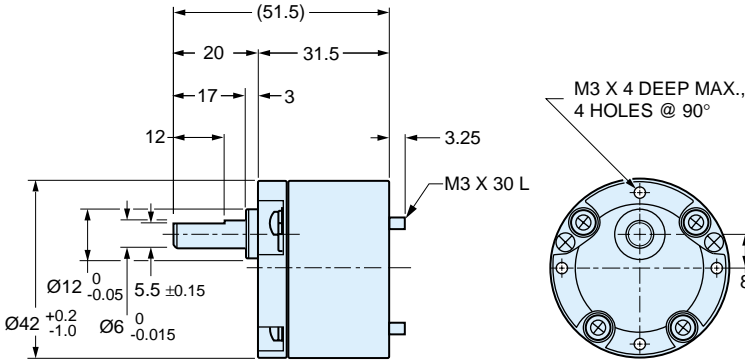
**MATING MOTOR PINION FOR GEARHEADS**

**MATERIAL:** Steel

Motor Shaft Diameter	Catalog Number	Number of Teeth	Module	P.D.	O.D.	Bore -0.014 -0.030	Face Width
3	A 1C 8MYS04014A	14	0.4	5.84	6.64	3	4.5
4	A 1C 8MYS04014B	14	0.4	5.84	6.64	4	4.5



**■ 42 mm DIAMETER ROUND HOUSING**



These gearheads can be used as replacements for **D33S38M...** Series gearmotors. See index.

The projections shown are per ISO convention.

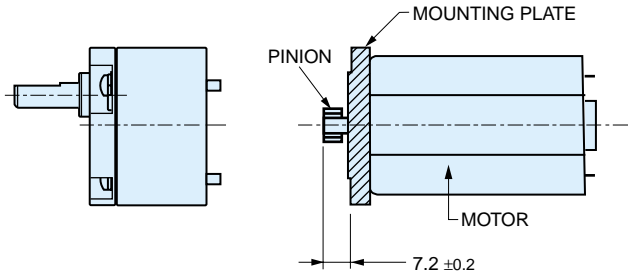
**FEATURES:**

- Small size and high output
- The input and output shafts have different center lines
- Decreased noise and smooth rotation due to the use of high-precision gears
- Stable quality
- Excellent durability

**SPECIFICATIONS:**

- Radial Play of Shaft – ≤ 0.1 mm
- Thrust Play of Shaft – ≤ 0.35 mm
- Operating Temperature – -10°C to +60°C

**MOTOR INSTALLATION**



**MATERIAL:** Housing – Die Cast Aluminum  
Gears – Steel

**GEARHEADS**

Catalog Number	Gear Ratio to 1	Efficiency %	Maximum Continuous Torque N • m (lb. in.)
A 2G33M0099	99.47	59	.98 (8.67)
A 2G33M0150	150		
A 2G33M0186	186.92		
A 2G33M0270	270		

**MATING MOTOR PINION FOR GEARHEADS**

**MATERIAL:** Steel

Motor Shaft Diameter	Catalog Number	Number of Teeth	Module	P.D.	O.D.	Bore -0.014 -0.030	Face Width
3	A 1C 8MYS04014A	14	0.4	5.84	6.64	3	4.5
4	A 1C 8MYS04014B	14	0.4	5.84	6.64	4	4.5



■ **43 mm SQUARE HOUSING**

**FEATURES:**

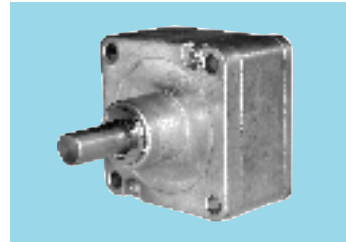
- Small size and high output
- Decreased noise and smooth rotation due to the use of high-precision gears
- Stable quality
- Excellent durability

**SPECIFICATIONS:**

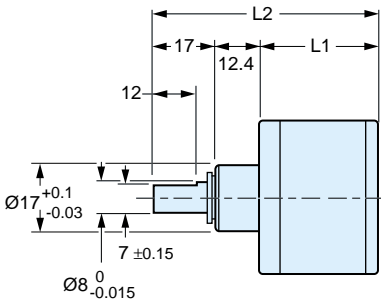
**Radial Play of Shaft** – ≤ 0.1 mm

**Thrust Play of Shaft** – ≤ 0.5 mm

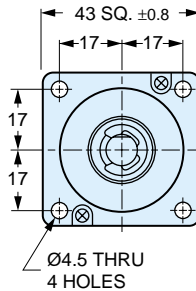
**Operating Temperature** – -10°C to +60°C



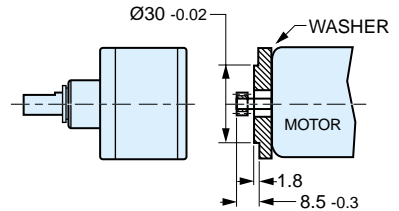
These gearheads can be used as replacements for **D33S43ME38....** & **D33S43MFST...** Series gearmotors. See index.



The projections shown are per ISO convention.



**MOTOR INSTALLATION**



**MATERIAL: Housing** – Machined Aluminum  
**Gears** – Steel

**GEARHEADS**

Catalog Number	Ratio to 1	L1 Length	L2 Overall Length	Efficiency %	Maximum Continuous Torque N • m (lb. in.)
A 2G32ME0014	14	25.9	55.3	66	.88 (7.79)
A 2G32ME0017	17.3				
A 2G32ME0024	24				
A 2G32ME0049	49	32.7	62.1	53	1.96 (17.35)
A 2G32ME0061	60.7				
A 2G32ME0084	84				
A 2G32ME0104	104				
A 2G32ME0144	144				

Continued on the next page

**MATING MOTOR PINION FOR GEARHEADS**

**MATERIAL:** Steel

Catalog Number	Number of Teeth	Module	P.D.	O.D.	Bore -0.015 -0.035	Face Width	For Ratio to 1
A 1C 8MYS06012	12	0.6	7.2	8.4	4.0	4	24, 84, 104, 144
A 1C 8MYS06018	18		10.7	11.9			17.3, 60.7
A 1C 8MYS06024	24		14.3	15.5			14, 49



■ **43 mm SQUARE HOUSING**

**FEATURES:**

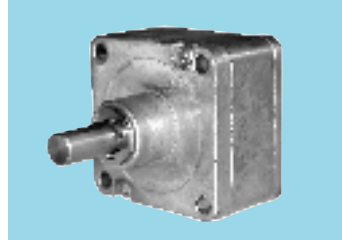
- Small size and high output
- Decreased noise and smooth rotation due to the use of high-precision gears
- Stable quality
- Excellent durability

**SPECIFICATIONS:**

**Radial Play of Shaft** – ≤ 0.1 mm

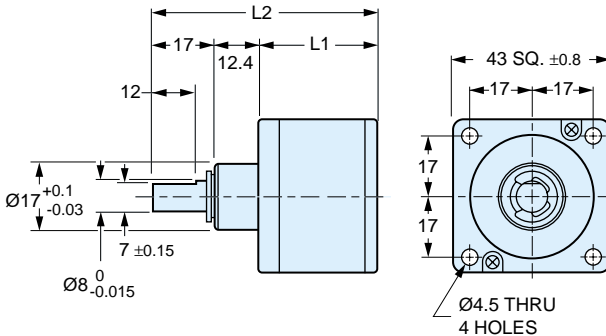
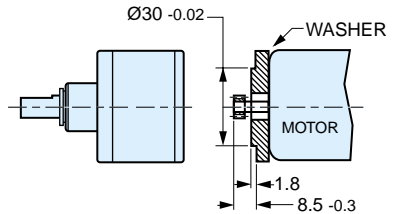
**Thrust Play of Shaft** – ≤ 0.5 mm

**Operating Temperature** – -10°C to +60°C



These gearheads can be used as replacements for **D33S43ME38...** & **D33S43MFST...** Series gearmotors. See index.

**MOTOR INSTALLATION**



The projections shown are per ISO convention.

**GEARHEADS**

**MATERIAL: Housing** – Machined Aluminum  
**Gears** – Steel

Catalog Number	Ratio to 1	L1 Length	L2 Overall Length	Efficiency %	Maximum Continuous Torque N • m (lb. in.)
A 2G32ME0213	212.3	39.4	68.8	43	1.96 (17.35)
A 2G32ME0294	294				
A 2G32ME0504	504				
A 2G32ME0624	624				
A 2G32ME0864	864				

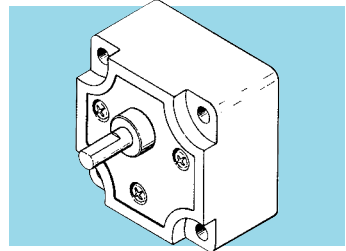
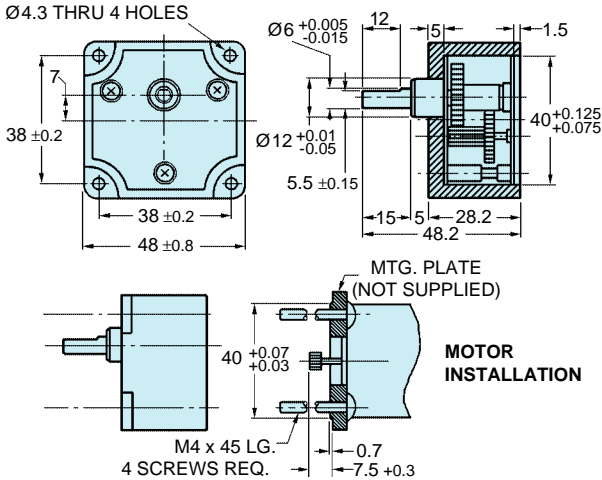
**MATING MOTOR PINION FOR GEARHEADS**

**MATERIAL:** Steel

Catalog Number	Number of Teeth	Module	P.D.	O.D.	Bore -0.015 -0.035	Face Width	For Ratio to 1
A 1C 8MYS06012	12	0.6	7.2	8.4	4.0	4	294, 504, 624, 864
A 1C 8MYS06018	18		10.7	11.9			



### ■ 48 mm SQUARE HOUSING



These gearheads can be used as replacements for **D33S40M...** & **D33S57M40B...** Series gearmotors.

#### FEATURES:

- Small size and high output
- The input and output shafts have different center lines
- Decreased noise and smooth rotation due to the use of high-precision gears
- Stable quality
- Excellent durability

#### SPECIFICATIONS:

- Radial Play of Shaft** –  $\leq 0.1$  mm
- Thrust Play of Shaft** –  $\leq 0.3$  mm
- Operating Temperature** –  $-10^{\circ}\text{C}$  to  $+60^{\circ}\text{C}$

**MATERIAL:** Housing – Machined Aluminum  
 Shafts – Steel  
 Gears – Steel  
 Bearings – Bronze

#### GEARHEADS

Catalog Number	Ratio to 1	Shaft Rotation	Efficiency %	Maximum Torque N • m (lb. in.)	
				Continuous	Momentary
A 2G31MB0013	12.67	Same	81	0.29 (2.6)	0.88 (7.8)
A 2G31MB0026	26.31	Reverse	73	0.49 (4.3)	1.47 (13)
A 2G31MB0030	29.56				
A 2G31MB0051	50.66				
A 2G31MB0105	105.23	Same	66	0.98 (8.7)	2.94 (26)
A 2G31MB0152	152				

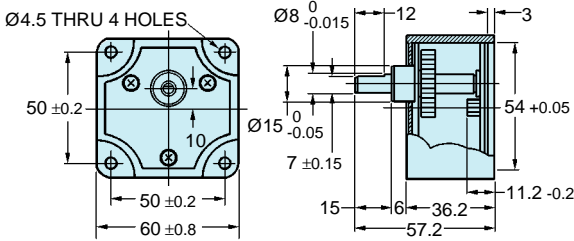
#### MATING MOTOR PINION FOR GEARHEADS

**MATERIAL:** Steel

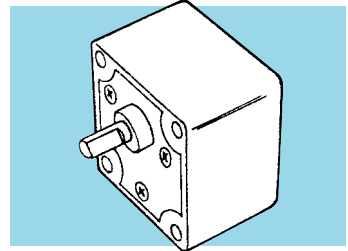
Catalog Number	Number of Teeth	Module	P.D.	O.D.	Bore -0.014 -0.030	Face Width
A 1C 8MYS04012	12	0.4	4.88	5.68	3	4



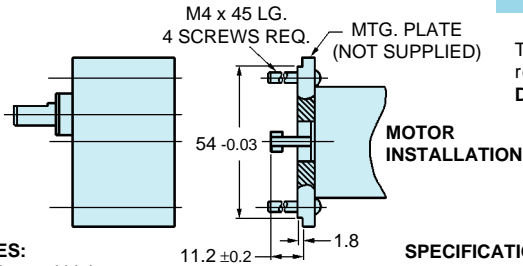
### ■ 60 mm SQUARE HOUSING



### ■ HIGH TORQUE



These gearheads can be used as replacements for **D33S52M...** & **D33S57M54D...** Series gearmotors.



#### FEATURES:

- Small size and high output
- The input and output shafts have different center lines
- Decreased noise and smooth rotation due to the use of high-precision gears
- Stable quality
- Excellent durability

#### SPECIFICATIONS:

- Radial Play of Shaft –  $\leq 0.1$  mm
- Thrust Play of Shaft –  $\leq 0.5$  mm
- Operating Temperature –  $-10^{\circ}\text{C}$  to  $+60^{\circ}\text{C}$

**MATERIAL:** Housing – Machined Aluminum  
Shafts – Steel  
Gears – Steel  
Bearings – Bronze

#### GEARHEADS

Catalog Number	Ratio to 1	Shaft Rotation	Efficiency %	Maximum Torque N • m (lb. in.)	
				Continuous	Momentary
A 2G30MD0020	20	Reverse	73	0.78 (6.9)	2.35 (20.8)
A 2G30MD0030	30				
A 2G30MD0060	60	Same	66	1.96 (17.3)	5.88 (52)
A 2G30MD0090	90				
A 2G30MD0140	140				
A 2G30MD0160	160				

#### MATING MOTOR PINION FOR GEARHEADS

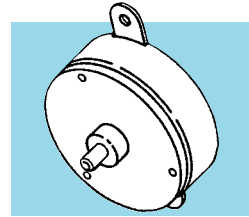
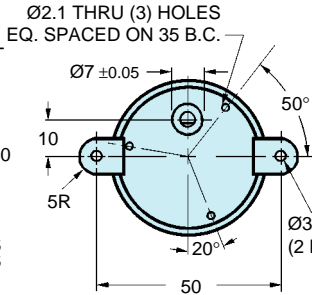
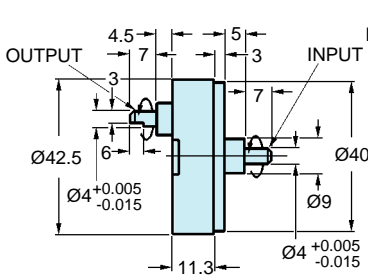
**MATERIAL:** Brass

Catalog Number	Number of Teeth	Module	P.D.	O.D.	Bore -0.02 -0.04	Face Width
A 1B 8MYS05012	12	0.5	6.2	7.2	4	4

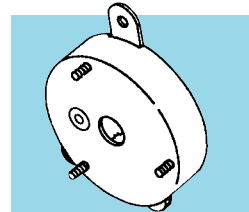


■ 42 mm DIAMETER

■ LIGHT-DUTY



**SPEED REDUCER**

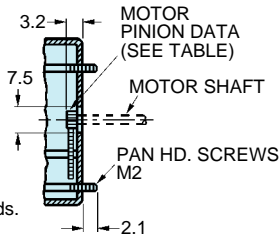


**GEARHEAD**

(Less Flange & Pinion)  
(Mtg. Screws Supplied)

"SAME" SHAFT ROTATION SHOWN ABOVE.

**HOUSING MOUNTING DIMENSIONS**



These gearheads may be used as replacements for A 3Z15M... Series gearheads.

**MATERIAL:**

- Housing** – Steel, Zinc Chromate Finish
- Shafts** – Steel
- Gears** – Steel
- Bearings** – Bronze

**SPECIFICATIONS:**

- Radial Play of Shaft** – ≤ 0.1 mm
- Thrust Play of Shaft** – ≤ 0.35 mm
- Operating Temperature** – -10°C to +60°C
- Backlash** – 2° at output shaft
- Weight** – 65 g

Catalog Number		Gear Ratio to 1	Shaft Rotation	Eff. %	Maximum Torque N • m (lb. in.)	
Speed Reducers	Gearheads Only				Continuous	Momentary
A 2Z15M00010	A 2G15M00010	10	Same	81	0.01 (.09)	0.05 (.44)
A 2Z15M00020	A 2G15M00020	20				
A 2Z15M00030	A 2G15M00030	30				
A 2Z15M00050	A 2G15M00050	50	Reverse	73	0.04 (.35)	0.2 (1.8)
A 2Z15M00060	A 2G15M00060	60				
A 2Z15M00100	A 2G15M00100	100				
A 2Z15M00150	A 2G15M00150	150	Same	66	0.06 (.53)	0.3 (2.7)
A 2Z15M00200	A 2G15M00200	200				
* A 2Z15M00250	* A 2G15M00250	250				

\* To be discontinued when present stock is depleted.

Continued on the next page

**MATING MOTOR PINION FOR GEARHEADS**

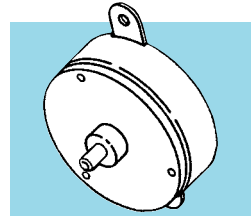
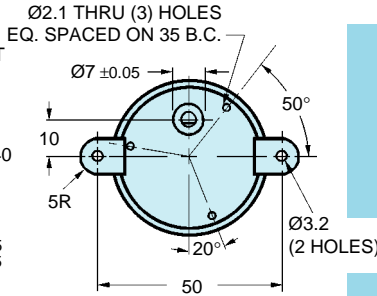
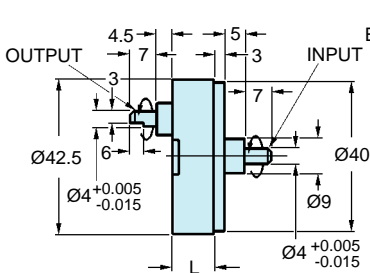
**MATERIAL:** Brass

Catalog Number	Number of Teeth	Module	P.D.	O.D.	Bore -0.02 -0.04	Face Width
A 1B 8MYS03010	10	0.3	3.15	3.75	2	2



■ 42 mm DIAMETER

■ LIGHT-DUTY

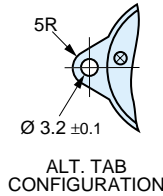
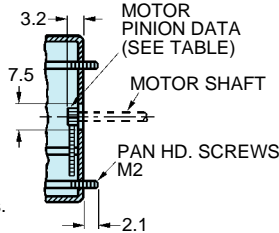


**SPEED REDUCER**

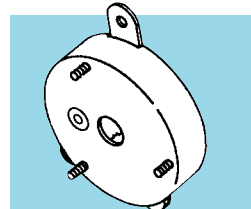
"SAME" SHAFT ROTATION SHOWN ABOVE.

The projections shown are per ISO convention.

**HOUSING MOUNTING DIMENSIONS**



ALT. TAB CONFIGURATION



**GEARHEAD**

(Less Flange & Pinion)  
(Mtg. Screws Supplied)

These gearheads may be used as replacements for A 3Z15M... Series gearheads.

**MATERIAL:**

**Housing** – Steel,  
Zinc Chromate Finish

**Shafts** – Steel

**Gears** – Steel

**Bearings** – Bronze

**SPECIFICATIONS:**

**Radial Play of Shaft** – ≤ 0.1 mm

**Thrust Play of Shaft** – ≤ 0.35 mm

**Operating Temperature** – -10°C to +60°C

**Backlash** – 2° at output shaft

**Weight** – 65 g

Catalog Number		Gear Ratio to 1	L	Shaft Rotation	Eff. %	Maximum Torque N • m (lb. in.)	
Speed Reducers	Gearheads Only					Continuous	Momentary
A 2Z15M00300	A 2G15M00300	300	11.3	Same	66	0.08 (.71)	0.4 (3.5)
A 2Z15M00400	A 2G15M00400	400					
A 2Z15M00500	A 2G15M00500	500					
A 2Z15M00750	A 2G15M00750	750		Reverse	59	0.1 (.89)	0.5 (4.4)
A 2Z15M01000	A 2G15M01000	1000					
A 2Z15M01500	A 2G15M01500	1500					
A 2Z15M02000	A 2G15M02000	2000	14.4	Same	—	0.1 (.89)	0.5 (4.4)
A 2Z15M03000	A 2G15M03000	3000					
* A 2Z15M15000	* A 2G15M15000	15000					
* A 2Z15M30000	* A 2G15M30000	30000		Reverse			
* A 2Z15M90000	* A 2G15M90000	90000					

\*To be discontinued when present stock is depleted.

**MATING MOTOR PINION FOR GEARHEADS**

**MATERIAL:** Brass

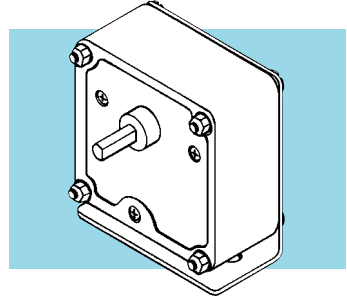
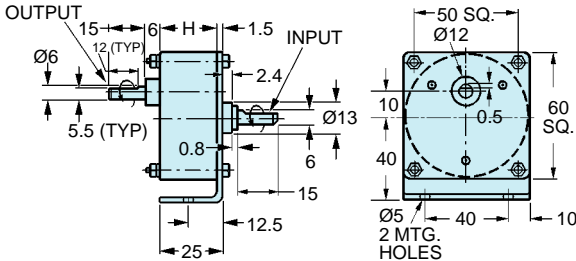
Catalog Number	Number of Teeth	Module	P.D.	O.D.	Bore -0.02 -0.04	Face Width
A 1B 8MYS03010	10	0.3	3.15	3.75	2	2



### ■ 60 mm SQUARE HOUSING

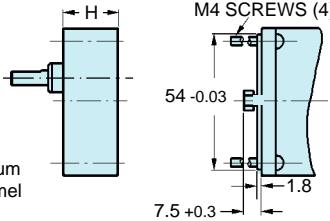
#### SPEED REDUCER

The projections shown are per ISO convention.



"SAME" SHAFT ROTATION SHOWN ABOVE

#### GEARHEAD ONLY



These gearheads can be used as replacements for A 3G25M... & D33S54M... Series gearmotors

#### MOTOR INSTALLATION

#### MATERIAL:

- Housing – Die Cast Aluminum
- Bracket – Steel, Black Enamel
- Shafts – Steel
- Gears – Steel & Phenolic
- Bearings – Input – Ball
- Output – Bronze

#### SPECIFICATIONS:

- Radial Play of Shaft –  $\leq 0.1$  mm
- Thrust Play of Shaft –  $\leq 0.3$  mm
- Operating Temperature –  $-10^{\circ}\text{C}$  to  $+60^{\circ}\text{C}$
- Approx. Weight – 0.026 kg (Speed Reducer)

Catalog Number		Gear Ratio to 1	Shaft Rotation	H	Eff. %	Maximum Torque N • m (lb. in.)	
Speed Reducers	Gearheads Only					Continuous	Momentary
A 2Z25M0006	A 2G25M0006	6	Same	19	81	0.1 (0.9)	0.3 (2.7)
A 2Z25M0008	A 2G25M0008	7.5					
A 2Z25M0010	A 2G25M0010	10	Reverse	19	81	0.2 (1.8)	0.6 (5.3)
A 2Z25M0012H	A 2G25M0012H	12.5					
A 2Z25M0020	A 2G25M0020	20	Reverse	21.5	73	0.4 (3.5)	1.18 (10.4)
A 2Z25M0025	A 2G25M0025	25					
A 2Z25M0030	A 2G25M0030	30					
A 2Z25M0036	A 2G25M0036	36					
A 2Z25M0040	A 2G25M0040	40					
A 2Z25M0050	A 2G25M0050	50	Reverse	21.5	73	0.7 (6.2)	2.07 (18.3)
A 2Z25M0060	A 2G25M0060	60					
A 2Z25M0100	A 2G25M0100	100	Reverse	21.5	73	1 (8.9)	2.96 (26.2)
A 2Z25M0120	A 2G25M0120	120					
A 2Z25M0150	A 2G25M0150	150	Same	24	66	1 (8.9)	2.96 (26.2)
A 2Z25M0180	A 2G25M0180	180					
A 2Z25M0200	A 2G25M0200	200					

Continued on the next page

#### MATING MOTOR PINION FOR GEARHEADS

MATERIAL: Brass

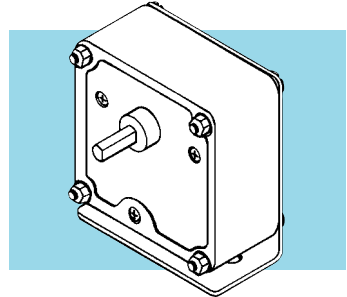
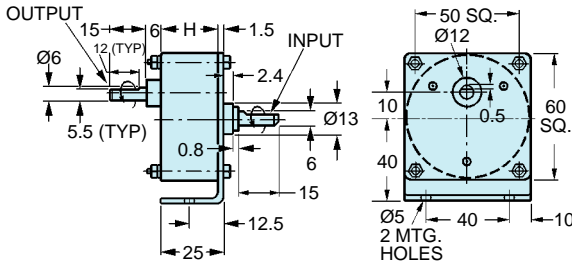
Catalog Number	Number of Teeth	Module	P.D.	O.D.	Bore -0.02 -0.04	Face Width
A 1B 8MYS05012	12	0.5	6.2	7.2	4	4



### ■ 60 mm SQUARE HOUSING

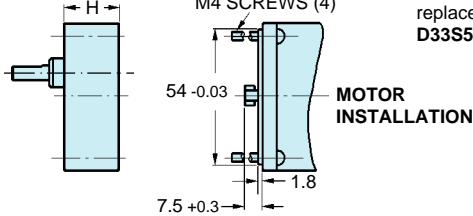
#### SPEED REDUCER

The projections shown are per ISO convention.



"SAME" SHAFT ROTATION SHOWN ABOVE  
M4 SCREWS (4)

#### GEARHEAD ONLY



These gearheads can be used as replacements for A 3G25M... & D33S54M... Series gearmotors

#### MATERIAL:

- Housing** – Die Cast Aluminum
- Bracket** – Steel, Black Enamel
- Shafts** – Steel
- Gears** – Steel & Phenolic
- Bearings** – Input — Ball
- Output** — Bronze

#### SPECIFICATIONS:

- Radial Play of Shaft** –  $\leq 0.1$  mm
- Thrusting Play of Shaft** –  $\leq 0.3$  mm
- Operating Temperature** –  $-10^{\circ}\text{C}$  to  $+60^{\circ}\text{C}$
- Approx. Weight** – 0.026 kg (Speed Reducer)

Catalog Number		Gear Ratio to 1	Shaft Rotation	H	Eff. %	Maximum Torque N • m (lb. in.)	
Speed Reducers	Gearheads Only					Continuous	Momentary
A 2Z25M0250	A 2G25M0250	250	Same	24	66	1 (8.9)	2.96 (26)
A 2Z25M0300	A 2G25M0300	300					
A 2Z25M0360	A 2G25M0360	360					
A 2Z25M0450	A 2G25M0450	450	Reverse	26.5	59		
A 2Z25M0500	A 2G25M0500	500	Same	24	66		
A 2Z25M0750	A 2G25M0750	750	Reverse	26.5	59		
A 2Z25M0900	A 2G25M0900	900	Reverse	26.5	59		
A 2Z25M1000	A 2G25M1000	1000					
A 2Z25M1200	A 2G25M1200	1200					
A 2Z25M1500	A 2G25M1500	1500					
A 2Z25M1800	A 2G25M1800	1800					
A 2Z25M2000	A 2G25M2000	2000					

#### MATING MOTOR PINION FOR GEARHEADS

MATERIAL: Brass

Catalog Number	Number of Teeth	Module	P.D.	O.D.	Bore -0.02 -0.04	Face Width
A 1B 8MYS05012	12	0.5	6.2	7.2	4	4



## Fairloc® – Integral Fastening System

3,380 inch & metric drive components are offered in the Fairloc® Components **Catalog D241**. Included are many new items which feature the patented Fairloc® fastening system. Fairloc® is self-contained, nonmarring, easily adjusted, fully supports the component, and is cost effective unlike conventional fastening methods.

## New INCH Drive Component Catalog 790

Free 1,184-page "**Handbook of INCH Drive Components – 790**" features over 48,000 off-the-shelf standardized components. Over 1,350 new products, including: gears, belt and chain drives, shafts, shaft accessories, bearings, couplings, universal joints, vibration mounts, gearheads, speed reducers, right angle drives, brakes and clutches.



## New METRIC Drive Component Catalog

Free 1,048-page "**Handbook of METRIC Drive Components – 780**" features over **21,000** off-the-shelf standardized commercial and precision quality metric components. Over 2,330 new products. Product groups include: gears, belt and chain drives, shafts, shaft accessories, bearings, couplings, universal joints, vibration mounts, gearheads, speed reducers, right angle drives, brakes, clutches, motors and gearmotors.