



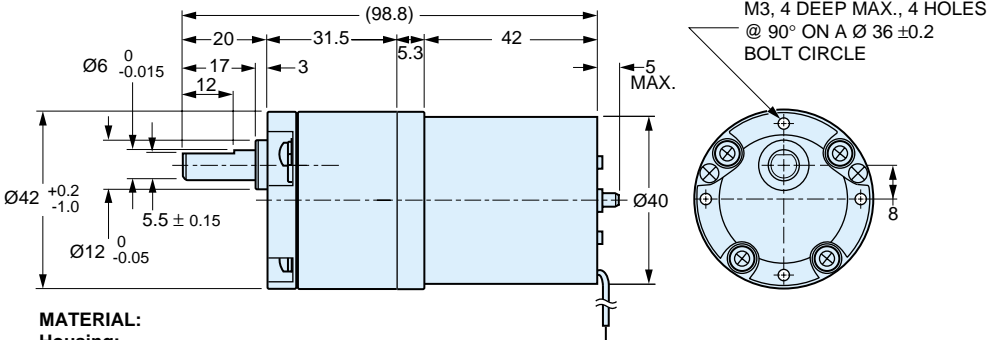
■ 12 VOLTS

■ 42 mm DIAMETER

MOTOR SPECIFICATIONS:

- Rated Voltage – 12V
- Rated Torque – 14.7 N • mm
- Rated Speed – 2560 rpm
- Rated Current – ≤ 520 mA
- No Load Speed – 3310 rpm
- No Load Current – ≤ 30 mA
- Rated Output – 3.84 W
- Operating Temp. – 10°C to +60°C

For replacement gearheads, see **A 2G33M....Series**



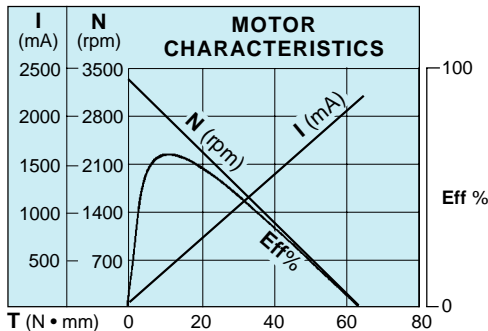
MATERIAL:

- Housing:**
- Gearhead – Aluminum
- Motor – Steel, Zinc Plated
- Shafts & Gears – Steel
- Bearings – Bronze

The projections shown are per ISO convention.

Catalog Number	Ratio to 1	Rated Torque N • mm (oz. in.)	Speed rpm	
			Rated	No Load
D33S38MFST0011A	11.73	118 (16.7)	222	282
D33S38MFST0030A	30	284 (40.2)	86	110
D33S38MFST0033A	33.16	314 (44.5)	78	100
D33S38MFST0050A	50	481 (68.1)	51	66
D33S38MFST0062A	62.31	598 (84.7)	41	53

Continued on the next page





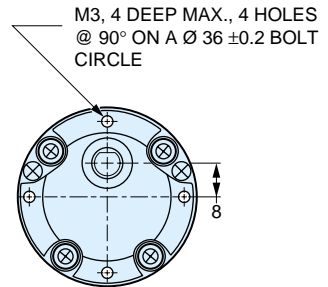
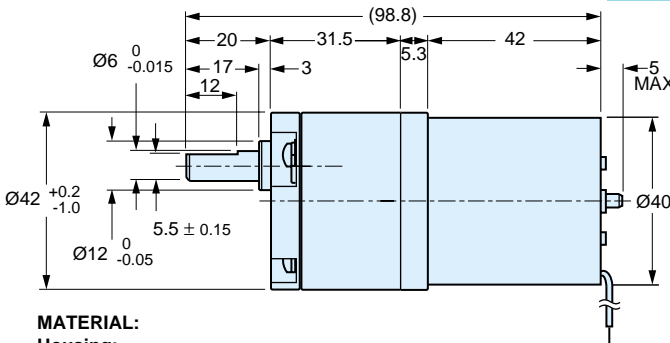
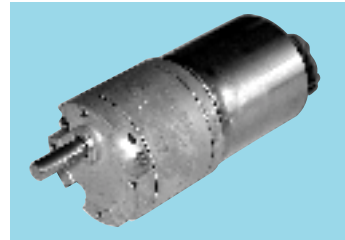
■ 12 VOLTS

■ 42 mm DIAMETER

MOTOR SPECIFICATIONS:

- Rated Voltage – 12V
- Rated Torque – 14.7 N • mm
- Rated Speed – 2560 rpm
- Rated Current – ≤ 520 mA
- No Load Speed – 3310 rpm
- No Load Current – ≤ 30 mA
- Rated Output – 3.84 W
- Operating Temp. – 10°C to +60°C

For replacement gearheads, see A 2G33M....Series

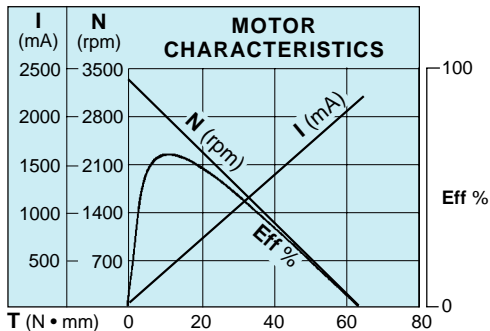


MATERIAL:

- Housing:**
- Gearhead – Aluminum
- Motor – Steel, Zinc Plated
- Shafts & Gears – Steel
- Bearings – Bronze

The projections shown are per ISO convention.

Catalog Number	Ratio to 1	Rated Torque N • mm (oz. in.)	Speed rpm	
			Rated	No Load
D33S38MFST0090A	90	873 (123.6)	28	37
D33S38MFST0099A	99.47	863 (122.2)	26	33
D33S38MFST0150A	150	981 (138.9)	18	22
D33S38MFST0186A	186.92	981 (138.9)	15	18
D33S38MFST0270A	270	981 (138.9)	11	12





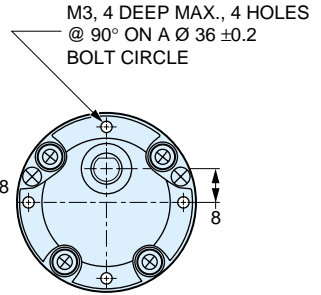
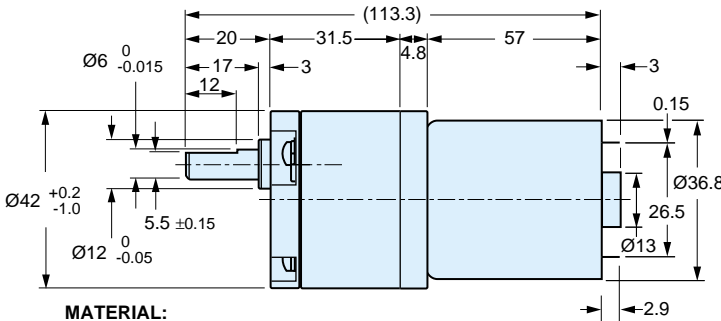
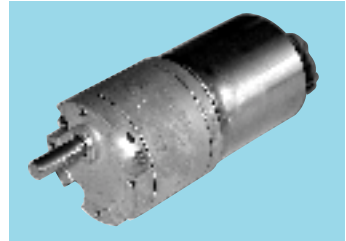
■ 12 VOLTS

■ 42 mm DIAMETER

MOTOR SPECIFICATIONS:

- Rated Voltage – 12V
- Rated Torque – 29.4 N • mm
- Rated Speed – 4300 rpm
- Rated Current – ≤ 2000 mA
- No Load Speed – 5400 rpm
- No Load Current – ≤ 430 mA
- Rated Output – 12.9 W
- Operating Temp. – 10°C to +60°C

For replacement gearheads, see A 2G33M....Series



MATERIAL:

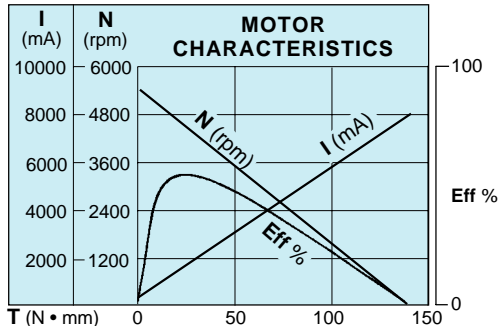
Housing:

- Gearhead – Aluminum
- Motor – Steel, Zinc Plated
- Shafts & Gears – Steel
- Bearings – Bronze

The projections shown are per ISO convention.

Catalog Number	Ratio to 1	Rated Torque N • mm (oz. in.)	Speed rpm	
			Rated	No Load
D33S38M4550011	11.73	245 (34.7)	369	460
D33S38M4550030	30	490 (69.4)	149	180
D33S38M4550033	33.16	490 (69.4)	138	163
D33S38M4550050	50	883 (125.0)	88	108
D33S38M4550062	62.31	981 (138.9)	72	87

Continued on the next page





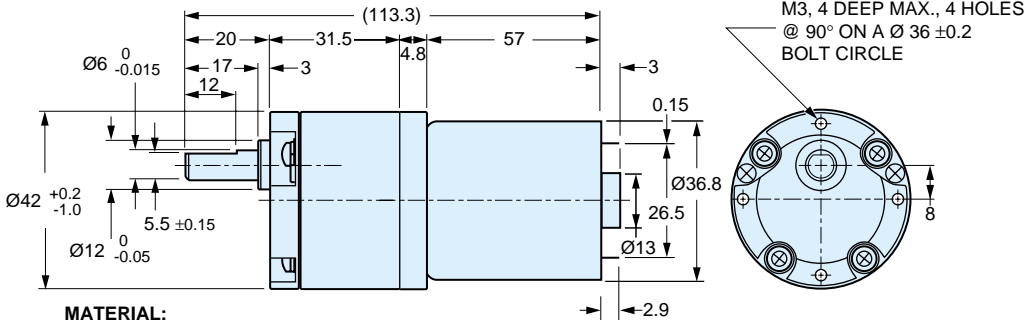
■ 12 VOLTS

■ 42 mm DIAMETER

MOTOR SPECIFICATIONS:

- Rated Voltage – 12V
- Rated Torque – 29.4 N • mm
- Rated Speed – 4300 rpm
- Rated Current – ≤ 2000 mA
- No Load Speed – 5400 rpm
- No Load Current – ≤ 430 mA
- Rated Output – 12.9 W
- Operating Temp. – 10°C to +60°C

For replacement gearheads, see A 2G33M....Series



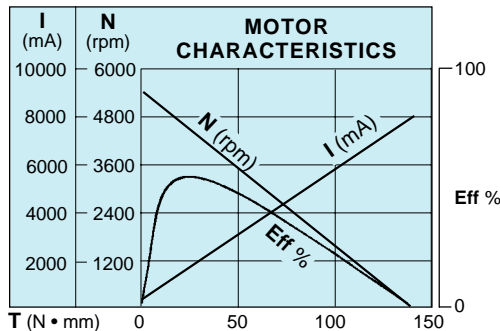
MATERIAL:

Housing:

- Gearhead – Aluminum
- Motor – Steel, Zinc Plated
- Shafts & Gears – Steel
- Bearings – Bronze

The projections shown are per ISO convention.

Catalog Number	Ratio to 1	Rated Torque N • mm (oz. in.)	Speed rpm	
			Rated	No Load
D33S38M4550090	90	981 (138.9)	53	60
D33S38M4550099	99.47		48	54
D33S38M4550150	150		33	36
D33S38M4550186	186.92		27	29
D33S38M4550270	270		19	20





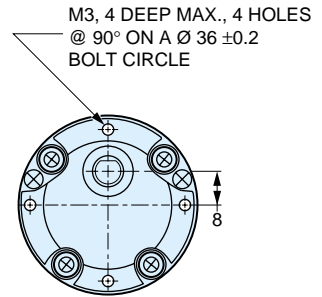
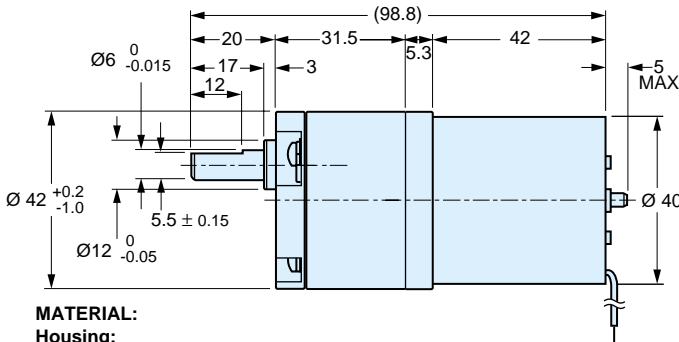
■ 24 VOLTS

■ 42 mm DIAMETER

MOTOR SPECIFICATIONS:

- Rated Voltage – 24V
- Rated Torque – 14.7 N • mm
- Rated Speed – 2560 rpm
- Rated Current – ≤ 265 mA
- No Load Speed – 3310 rpm
- No Load Current – ≤ 30 mA
- Rated Output – 3.84 W
- Operating Temp. – 10°C to +60°C

For replacement gearheads, see A 2G33M....Series



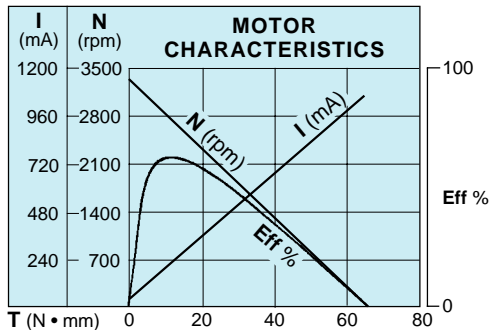
MATERIAL:

- Housing:**
- Gearhead – Aluminum
- Motor – Steel, Zinc Plated
- Shafts & Gears – Steel
- Bearings – Bronze

The projections shown are per ISO convention.

Catalog Number	Ratio to 1	Rated Torque N • mm (oz. in.)	Speed rpm	
			Rated	No Load
D33S38MFST0011B	11.73	118 (16.7)	222	282
D33S38MFST0030B	30	284 (40.2)	86	110
D33S38MFST0033B	33.16	314 (44.5)	78	100
D33S38MFST0050B	50	481 (68.1)	51	66
D33S38MFST0062B	62.31	598 (84.7)	41	53

Continued on the next page





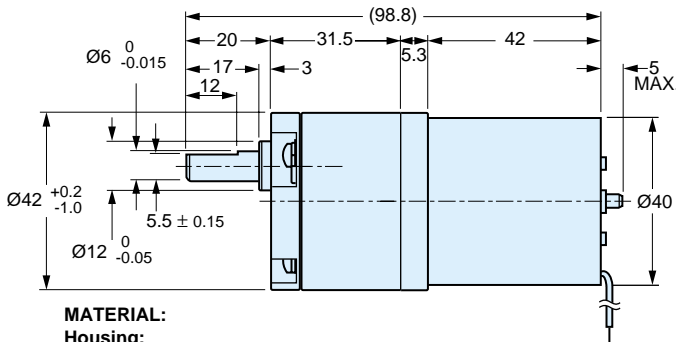
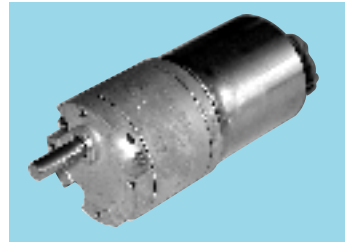
■ 24 VOLTS

■ 42 mm DIAMETER

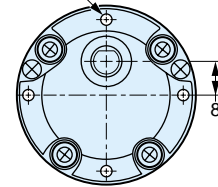
MOTOR SPECIFICATIONS:

- Rated Voltage – 24V
- Rated Torque – 14.7 N • mm
- Rated Speed – 2560 rpm
- Rated Current – ≤ 265 mA
- No Load Speed – 3310 rpm
- No Load Current – ≤ 30 mA
- Rated Output – 3.84 W
- Operating Temp. – 10°C to +60°C

For replacement gearheads, see **A 2G33M....Series**



M3, 4 DEEP MAX., 4 HOLES @ 90° ON A Ø 36 ±0.2 BOLT CIRCLE



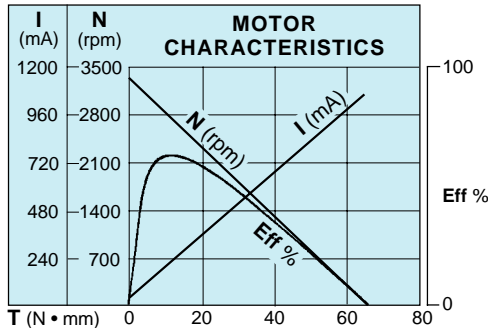
MATERIAL:

Housing:

- Gearhead – Aluminum
- Motor – Steel, Zinc Plated
- Shafts & Gears – Steel
- Bearings – Bronze

The projections shown are per ISO convention.

Catalog Number	Ratio to 1	Rated Torque N • mm (oz. in.)	Speed rpm	
			Rated	No Load
D33S38MFST0090B	90	873 (123.6)	28	37
D33S38MFST0099B	99.47	863 (122.2)	26	33
D33S38MFST0150B	150	981 (138.9)	18	22
D33S38MFST0186B	186.92	981 (138.9)	15	18
D33S38MFST0270B	270	981 (138.9)	11	12





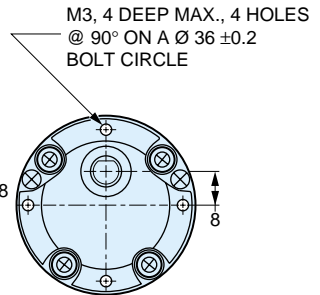
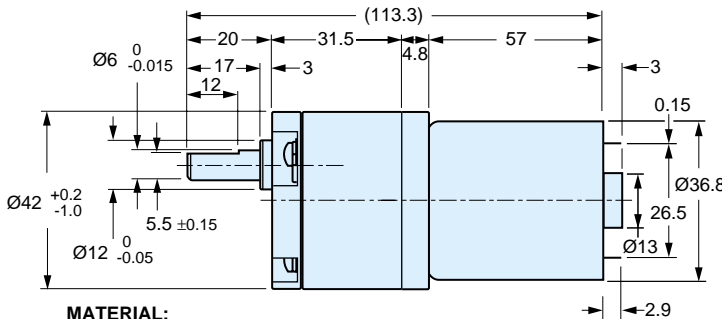
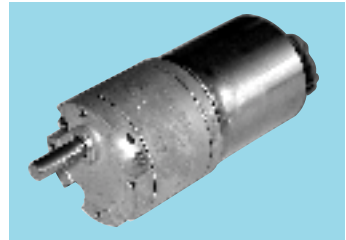
■ 24 VOLTS

■ 42 mm DIAMETER

MOTOR SPECIFICATIONS:

- Rated Voltage – 24V
- Rated Torque – 19.6 N • mm
- Rated Speed – 3400 rpm
- Rated Current – ≤ 600 mA
- No Load Speed – 4200 rpm
- No Load Current – ≤ 200 mA
- Rated Output – 6.80 W
- Operating Temp. – 10°C to +60°C

For replacement gearheads, see A 2G33M....Series



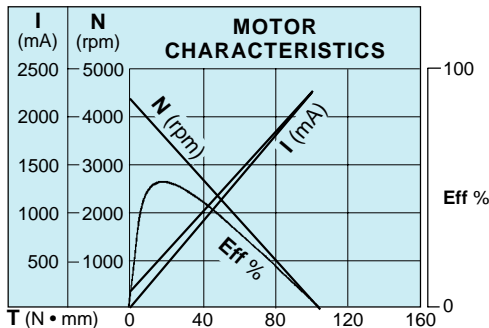
MATERIAL:

- Housing:**
- Gearhead – Aluminum
- Motor – Steel, Zinc Plated
- Shafts & Gears – Steel
- Bearings – Bronze

The projections shown are per ISO convention.

Catalog Number	Ratio to 1	Rated Torque N • mm (oz. in.)	Speed rpm	
			Rated	No Load
D33S38M5560011	11.73	167 (23.6)	290	358
D33S38M5560030	30	382 (54.1)	114	140
D33S38M5560033	33.16	422 (59.8)	103	127
D33S38M5560050	50	647 (91.6)	68	84
D33S38M5560062	62.31	804 (113.8)	55	67

Continued on the next page





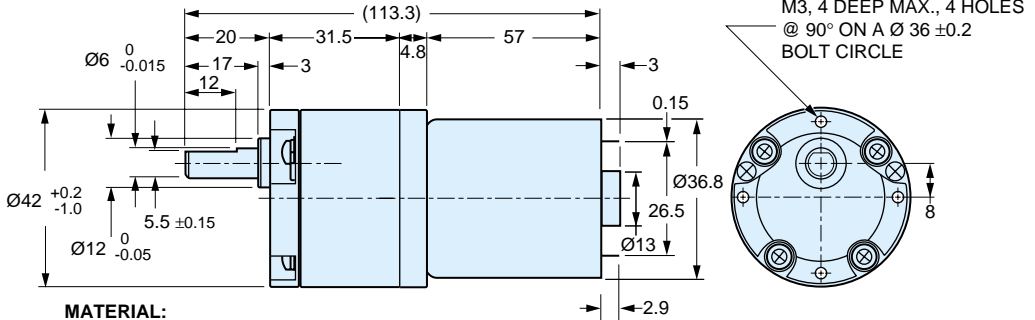
■ 24 VOLTS

■ 42 mm DIAMETER

MOTOR SPECIFICATIONS:

- Rated Voltage – 24V
- Rated Torque – 19.6 N • mm
- Rated Speed – 3400 rpm
- Rated Current – ≤ 600 mA
- No Load Speed – 4200 rpm
- No Load Current – ≤ 200 mA
- Rated Output – 6.80 W
- Operating Temp. – 10°C to +60°C

For replacement gearheads, see A 2G33M....Series



MATERIAL:

- Housing:
 - Gearhead – Aluminum
 - Motor – Steel, Zinc Plated
 - Shafts & Gears – Steel
 - Bearings – Bronze

The projections shown are per ISO convention.

Catalog Number	Ratio to 1	Rated Torque N • mm (oz. in.)	Speed rpm	
			Rated	No Load
D33S38M5560090	90	981 (138.9)	39	47
D33S38M5560099	99.47		35	42
D33S38M5560150	150		25	28
D33S38M5560186	186.92		21	22
D33S38M5560270	270		15	16

