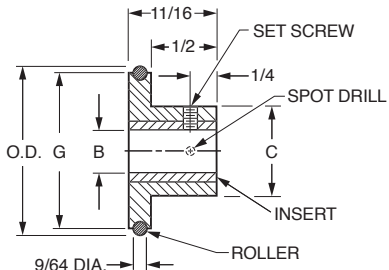


Inch Inch Inch Inch Inch Inch Inch Inch Inch Inch

SDPSI Friction Drive Wheels

Stock Drive Products/Sterling Instrument ■ Phone: 516-328-3300 ■ Fax: 516-326-8827

■ 3/16 FACE



MATERIAL: Body – Acetal
 Insert – Brass
 Roller – Buna "N", 70 Durometer

Catalog Number	O.D.	B Bore +.001 -.000	C Hub Diameter	G Diameter	O-Ring Roller Ref.	Set Screw
A 6Z10-1340404	5/8	.125	5/8	.500	203	#4-40
A 6Z10-1340604	7/8			.750	207	
A 6Z10-1341004	1-1/8		1.000	211		
A 6Z10-1341404	1-5/8		1.500	219		
A 6Z10-1342004	2-1/8	.1875	1	2.000	224	#4-40
A 6Z10-1340406	5/8		5/8	.500	203	
A 6Z10-1340606	7/8			.750	207	
A 6Z10-1341006	1-1/8		1.000	211		
A 6Z10-1341406	1-5/8	.250	3/4	1.500	219	#6-32
A 6Z10-1342006	2-1/8		1	2.000	224	
A 6Z10-1340608	7/8		5/8	.750	207	
A 6Z10-1341008	1-1/8			1.000	211	
A 6Z10-1341408	1-5/8	3/4	1.500	219	#6-32	
A 6Z10-1342008	2-1/8		2.000	224		
A 6Z10-1342408	2-5/8	1	2.500	228		

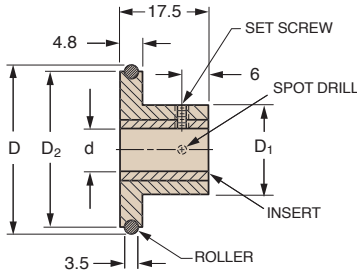
REPLACEMENT O-RING

O-Ring Roller Ref.	Catalog Number	Diameter	I.D.
203	A 6R11-040025	1/8	5/16
207	A 6R11-040045		9/16
211	A 6R11-040065		13/16
219	A 6R11-040125		1-5/16
224	A 6R11-04016		1-3/4
228	A 6R11-04022		2-1/4



Friction Drive Wheels

■ 4.8 mm FACE



MATERIAL: Body – Acetal
 Insert – Brass
 Roller – Buna "N", 70 Durometer

Catalog Number	D	d Bore +0.025	D ₁ Hub Diameter	D ₂ Diameter	Set Screw
A 6Z10M131304	15.9	4	16	12.7	M3
A 6Z10M131904	22.3			19.1	
A 6Z10M132504	28.6			25.4	
A 6Z10M133804	41.3	6	16	38.1	M3
A 6Z10M135104	54			50.8	
A 6Z10M131306	15.9			12.7	
A 6Z10M131906	22.3	8	16	19.1	M3
A 6Z10M132506	28.6			25.4	
A 6Z10M133806	41.3			38.1	
A 6Z10M135106	54	50.8	M3	M3	
A 6Z10M131908	22.3	16			19.1
A 6Z10M132508	28.6	25.4			M4
A 6Z10M135108	54	50.8			

Did You Know?

We have a staff of experienced engineers who will gladly assist you with your design problems. Call between (9 AM and 5 PM E.S.T.) or fax anytime.

TEL: 516-328-3300

FAX: 516-328-9029