

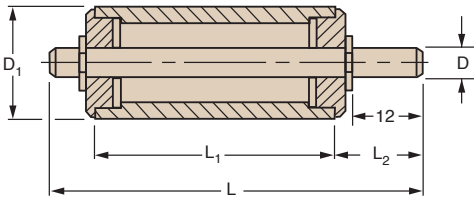
Metric      Metric      Metric      Metric      Metric      Metric      Metric

**SDPSI** **Low Cost Idlers**

Stock Drive Products/Sterling Instrument      Phone: 516-328-3300      Fax: 516-326-8827

■ STAINLESS STEEL HOUSING

■ SINTERED BRONZE BEARINGS



**MATERIAL:** Shaft – 303 Stainless Steel  
 Housing – 300 Series Stainless Steel  
 Bearings – Sintered Bronze

Catalog Number	L	L <sub>1</sub>	L <sub>2</sub>	D* g6	D <sub>1</sub>	Clearance Dia.
ΔS7AYPAM32120510	32	12	14.3	5	10	10.2
S7AYPAM32120512					12	12
ΔS7AYPAM32120612			15	6	12	14
S7AYPAM32120618					18	18
ΔS7AYPAM50250510	50	25	14.3	5	10	10.2
S7AYPAM50250512					12	12
S7AYPAM50250515					15	15
S7AYPAM50250618			15	6	18	18
S7AYPAM50250818			16.2	8	18	18
S7AYPAM50250820			16.2	8	20	20

\*Idlers with 5 and 6 dia. shaft have a tolerance of - 0.004, - 0.012  
 8 dia. shaft have a tolerance of - 0.005, - 0.014

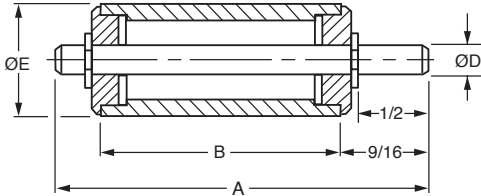
ΔRetaining ring clearance diameter or bronze bearing flange diameter is larger than diameter "D<sub>1</sub>".

**Did You Know?**

Many special requirements can be met with standard tooling — with merely a nominal surcharge.  
 If your design calls for a modified part...send us your print!

■ STAINLESS STEEL HOUSING

■ SINTERED BRONZE BEARINGS



**MATERIAL:** Shaft – 303 Stainless Steel  
 Housing – 303 Stainless Steel  
 Bearings – Sintered Bronze

Catalog Number	A	B	D Shaft Diameter + .0000 - .0002	E
*S7AYPA-05020303	1.25	.500	.1872	3/8
S7AYPA-05020304				1/2
S7AYPA-05020404			1/2	
S7AYPA-05020406			.2497	3/4
S7AYPA-07040304	1.75	1.000	.1872	1/2
S7AYPA-07040305				5/8
S7AYPA-07040406			3/4	

\*Retaining ring clearance diameter exceeds idler O.D.

Other sizes available on special order.

### Did You Know?

Many special requirements can be met with standard tooling — with merely a nominal surcharge.

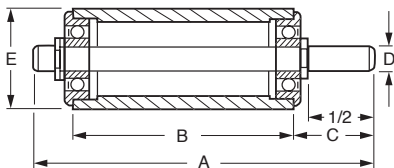
If your design calls for a modified part...send us your print!

Inch   Inch   Inch   Inch   Inch   Inch   Inch   Inch   Inch

**SDPSI** **Idlers**

Stock Drive Products/Sterling Instrument   ■   Phone: 516-328-3300   ■   Fax: 516-326-8827

■ ALL STAINLESS CONSTRUCTION



**MATERIAL:** Shaft – 303 Stainless Steel  
Housing – 300 Series Stainless Steel  
Bearings – 440C Stainless Steel

Catalog Number	Dimensions				
	A	B	C	D Shaft Diameter +.0000 -.0002	E
A 7Y 5-IS3118	1.25	.500	9/16	.1872	3/8
A 7Y 5-IS3718					1/2
A 7Y 5-IS5018				5/8	
A 7Y 5-IS3725				1/2	
A 7Y 5-IS5025	1.75	1.000		.2497	5/8
A 7Y 5-IS6225					3/4
A 7Y 5-IL3118				3/8	
A 7Y 5-IL3718				1/2	
A 7Y 5-IL5018	.1872	1.000	9/16	5/8	
A 7Y 5-IL3725				1/2	
A 7Y 5-IL5025				5/8	
A 7Y 5-IL6225	.2497	1.000	9/16	3/4	
A 7Y 5-IL6225				3/4	