



■ 20° PRESSURE ANGLE

Fig. 1

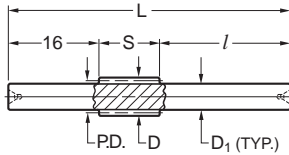


Fig. 2

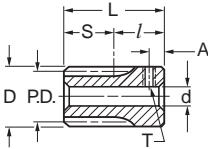
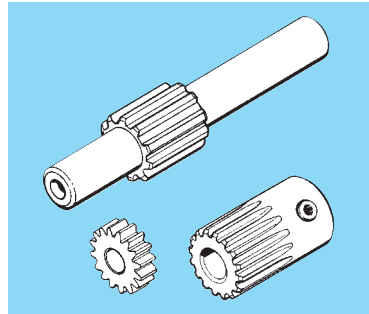
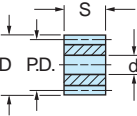


Fig. 3



MATERIAL: Steel

Catalog Number	Module	Fig. No.	No. of Teeth	P.D.	D	d \parallel Bore H8	S Face Width	L Length	D ₁ ** Shaft Dia. h8	l	A	T Set Screw								
<input type="checkbox"/> A 1C 8MYSH2013	0.25	3	13	3.25	3.75	2*	2.5	—	—	—	—	—								
<input type="checkbox"/> A 1C 8MYSH2016			16	3.9	4.4															
<input type="checkbox"/> A 1C 8MYSH2019			19	4.75	5.25															
<input type="checkbox"/> A 1C 8MYS05012	0.5	3	12	6.2	7.2	4*	4	—	—	—	—	—								
<input type="checkbox"/> A 1C 8MYS06012			12	7.2	8.4															
<input type="checkbox"/> A 1C 8MYS06018			18	10.7	11.9															
<input type="checkbox"/> A 1C 8MYS06024	0.6	3	24	14.3	15.5	4 \diamond	4	—	—	—	—	—								
<input type="checkbox"/> A 1C 8MYK10008			1	8	8								10.64	—	12	60	6	32	—	—
<input type="checkbox"/> A 1C 8MYK10010				10	10								12.66							
<input type="checkbox"/> A 1C 8MYK10012	1	2	12	12	14	6	12	30	—	18	5	M4								
<input type="checkbox"/> A 1C 8MYK10014			14	14	16															
<input type="checkbox"/> A 1C 8MYK10015			15	15	17															
<input type="checkbox"/> A 1C 8MYK10016			16	16	18															
<input type="checkbox"/> A 1C 8MYK10018			18	18	20															

Δ To obtain additional tooth strength, these pinions are produced by shifting the tooth profile which results in a long addendum. The center distance for these pinions has to be increased. Therefore, please consult our Engineering Department.

Suitable for use with speed reducers.

\parallel Bore Tolerance: 6 mm + 0.018
8 mm + 0.022

* Bore Tolerance: 2 mm - 0.01, - 0.03
4 mm - 0.02, - 0.04

** Shaft Tolerance: 6 mm - 0.018
8 mm - 0.022

\diamond Bore Tolerance: 4 mm - 0.015, - 0.035