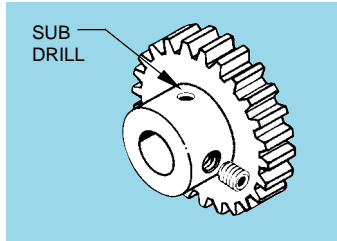
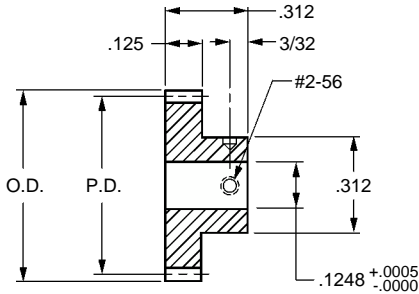


- AGMA Q10
- 20° PRESSURE ANGLE
- 1/8 FACE
- 1/8 BORE

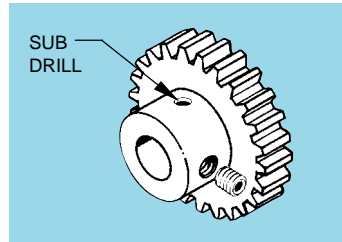
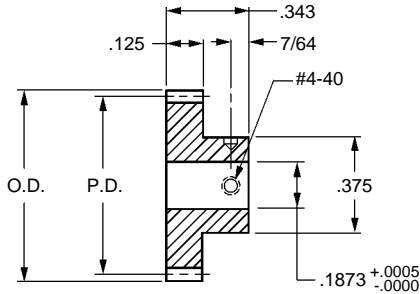


Catalog Number		No. of Teeth	P.D.	O.D.
303 Stainless Steel	2024 Aluminum * Anodized			
S1063Z-048S014	S1063Z-048A014	14	0.2917	0.333
S1063Z-048S018	S1063Z-048A018	18	0.3750	0.417
S1063Z-048S020	S1063Z-048A020	20	0.4167	0.458
S1063Z-048S022	S1063Z-048A022	22	0.4583	0.500
S1063Z-048S024	S1063Z-048A024	24	0.5000	0.542
S1063Z-048S028	S1063Z-048A028	28	0.5833	0.625
S1063Z-048S030	S1063Z-048A030	30	0.6250	0.667
S1063Z-048S032	S1063Z-048A032	32	0.6667	0.708
S1063Z-048S034	S1063Z-048A034	34	0.7083	0.750
S1063Z-048S036	S1063Z-048A036	36	0.7500	0.792
S1063Z-048S038	S1063Z-048A038	38	0.7917	0.833
S1063Z-048S040	S1063Z-048A040	40	0.8333	0.875
S1063Z-048S042	S1063Z-048A042	42	0.8750	0.917
S1063Z-048S046	S1063Z-048A046	46	0.9583	1.000
S1063Z-048S048	S1063Z-048A048	48	1.0000	1.042
S1063Z-048S050	S1063Z-048A050	50	1.0417	1.083
S1063Z-048S056	S1063Z-048A056	56	1.1667	1.208
S1063Z-048S060	S1063Z-048A060	60	1.2500	1.292
S1063Z-048S064	S1063Z-048A064	64	1.3333	1.375
S1063Z-048S065	S1063Z-048A065	65	1.3542	1.396
S1063Z-048S070	S1063Z-048A070	70	1.4583	1.500
S1063Z-048S072	S1063Z-048A072	72	1.5000	1.542
S1063Z-048S080	S1063Z-048A080	80	1.6667	1.708
S1063Z-048S084	S1063Z-048A084	84	1.7500	1.792
S1063Z-048S085	S1063Z-048A085	85	1.7708	1.813
S1063Z-048S090	S1063Z-048A090	90	1.8750	1.917
S1063Z-048S096	S1063Z-048A096	96	2.0000	2.042
S1063Z-048S100	S1063Z-048A100	100	2.0833	2.125
S1063Z-048S102	S1063Z-048A102	102	2.1250	2.167
S1063Z-048S105	S1063Z-048A105	105	2.1875	2.229

* T4 or T351 Aluminum Alloy, anodized before cutting.

Available on special order: 14-1/2° P.A., teeth not listed, different bore size and/or material, passivation for stainless steel.

- AGMA Q10
- 20° PRESSURE ANGLE
- 1/8 FACE
- 3/16 BORE



Catalog Number		No. of Teeth	P.D.	O.D.
303 Stainless Steel	2024 Aluminum * Anodized			
S1064Z-048S020	S1064Z-048A020	20	0.4167	0.458
S1064Z-048S021	S1064Z-048A021	21	0.4375	0.479
S1064Z-048S022	S1064Z-048A022	22	0.4583	0.500
S1064Z-048S023	S1064Z-048A023	23	0.4792	0.521
S1064Z-048S024	S1064Z-048A024	24	0.5000	0.542
S1064Z-048S025	S1064Z-048A025	25	0.5208	0.563
S1064Z-048S026	S1064Z-048A026	26	0.5417	0.583
S1064Z-048S028	S1064Z-048A028	28	0.5833	0.625
S1064Z-048S030	S1064Z-048A030	30	0.6250	0.667
S1064Z-048S032	S1064Z-048A032	32	0.6667	0.708
S1064Z-048S034	S1064Z-048A034	34	0.7083	0.750
S1064Z-048S036	S1064Z-048A036	36	0.7500	0.792
S1064Z-048S040	S1064Z-048A040	40	0.8333	0.875
S1064Z-048S042	S1064Z-048A042	42	0.8750	0.917
S1064Z-048S044	S1064Z-048A044	44	0.9167	0.958
S1064Z-048S046	S1064Z-048A046	46	0.9583	1.000
S1064Z-048S048	S1064Z-048A048	48	1.0000	1.042
S1064Z-048S050	S1064Z-048A050	50	1.0417	1.083
S1064Z-048S060	S1064Z-048A060	60	1.2500	1.292
S1064Z-048S064	S1064Z-048A064	64	1.3333	1.375
S1064Z-048S070	S1064Z-048A070	70	1.4583	1.500
S1064Z-048S072	S1064Z-048A072	72	1.5000	1.542
S1064Z-048S080	S1064Z-048A080	80	1.6667	1.708
S1064Z-048S084	S1064Z-048A084	84	1.7500	1.792
S1064Z-048S090	S1064Z-048A090	90	1.8750	1.917
S1064Z-048S096	S1064Z-048A096	96	2.0000	2.042
S1064Z-048S100	S1064Z-048A100	100	2.0833	2.125
S1064Z-048S105	S1064Z-048A105	105	2.1875	2.229
S1064Z-048S110	S1064Z-048A110	110	2.2917	2.333
S1064Z-048S120	S1064Z-048A120	120	2.5000	2.542

* T4 or T351 Aluminum Alloy, anodized before cutting.

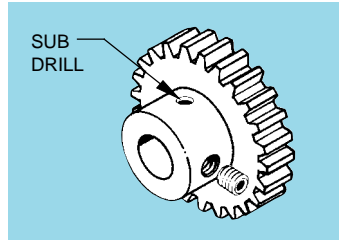
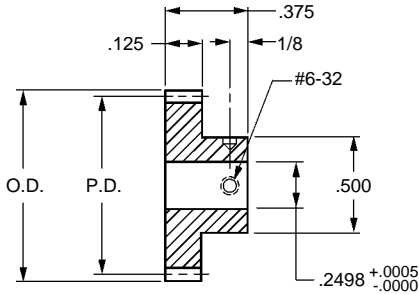
Available on special order: 14-1/2° P.A., teeth not listed, different bore size and/or material, passivation for stainless steel.

■ AGMA Q10

■ 20° PRESSURE ANGLE

■ 1/8 FACE

■ 1/4 BORE



Catalog Number		No. of Teeth	P.D.	O.D.
303 Stainless Steel	2024 Aluminum * Anodized			
S1066Z-048S020	S1066Z-048A020	20	0.4167	0.458
S1066Z-048S023	S1066Z-048A023	23	0.4792	0.521
S1066Z-048S024	S1066Z-048A024	24	0.5000	0.542
S1066Z-048S025	S1066Z-048A025	25	0.5208	0.563
S1066Z-048S026	S1066Z-048A026	26	0.5417	0.583
S1066Z-048S027	S1066Z-048A027	27	0.5625	0.604
S1066Z-048S028	S1066Z-048A028	28	0.5833	0.625
S1066Z-048S029	S1066Z-048A029	29	0.6042	0.646
S1066Z-048S030	S1066Z-048A030	30	0.6250	0.667
S1066Z-048S032	S1066Z-048A032	32	0.6667	0.708
S1066Z-048S034	S1066Z-048A034	34	0.7083	0.750
S1066Z-048S035	S1066Z-048A035	35	0.7292	0.771
S1066Z-048S036	S1066Z-048A036	36	0.7500	0.792
S1066Z-048S038	S1066Z-048A038	38	0.7917	0.833
S1066Z-048S040	S1066Z-048A040	40	0.8333	0.875
S1066Z-048S042	S1066Z-048A042	42	0.8750	0.917
S1066Z-048S044	S1066Z-048A044	44	0.9167	0.958
S1066Z-048S045	S1066Z-048A045	45	0.9375	0.979
S1066Z-048S046	S1066Z-048A046	46	0.9583	1.000
S1066Z-048S048	S1066Z-048A048	48	1.0000	1.042
S1066Z-048S050	S1066Z-048A050	50	1.0417	1.083
S1066Z-048S054	S1066Z-048A054	54	1.1250	1.167
S1066Z-048S055	S1066Z-048A055	55	1.1458	1.188
S1066Z-048S056	S1066Z-048A056	56	1.1667	1.208
S1066Z-048S060	S1066Z-048A060	60	1.2500	1.292
S1066Z-048S064	S1066Z-048A064	64	1.3333	1.375
S1066Z-048S065	S1066Z-048A065	65	1.3542	1.396
S1066Z-048S070	S1066Z-048A070	70	1.4583	1.500
S1066Z-048S072	S1066Z-048A072	72	1.5000	1.542
S1066Z-048S075	S1066Z-048A075	75	1.5625	1.604

* T4 or T351 Aluminum Alloy, anodized before cutting.

Continued on the next page

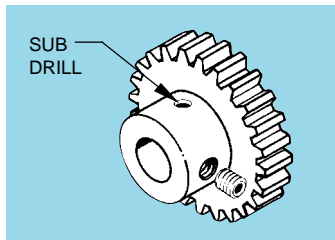
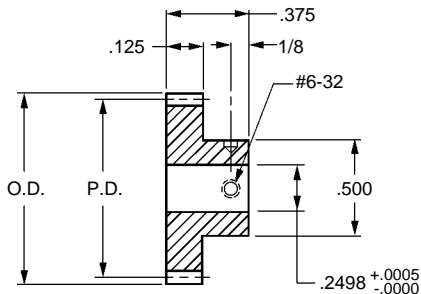
Available on special order: 14-1/2° P.A., teeth not listed, different bore size and/or material, passivation for stainless steel.

■ AGMA Q10

■ 20° PRESSURE ANGLE

■ 1/8 FACE

■ 1/4 BORE

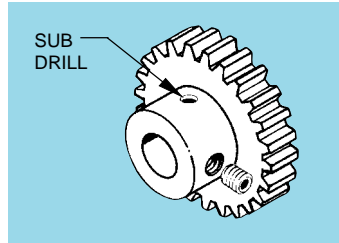
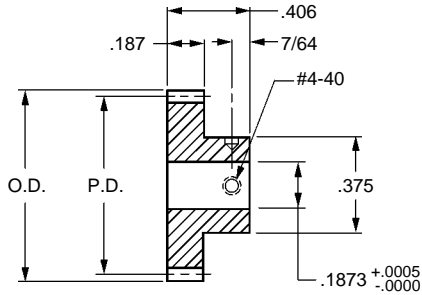


Catalog Number		No. of Teeth	P.D.	O.D.
303 Stainless Steel	2024 Aluminum * Anodized			
S1066Z-048S078	S1066Z-048A078	78	1.6250	1.667
S1066Z-048S080	S1066Z-048A080	80	1.6667	1.708
S1066Z-048S084	S1066Z-048A084	84	1.7500	1.792
S1066Z-048S085	S1066Z-048A085	85	1.7708	1.813
S1066Z-048S090	S1066Z-048A090	90	1.8750	1.917
S1066Z-048S092	S1066Z-048A092	92	1.9167	1.958
S1066Z-048S095	S1066Z-048A095	95	1.9792	2.021
S1066Z-048S096	S1066Z-048A096	96	2.0000	2.042
S1066Z-048S100	S1066Z-048A100	100	2.0833	2.125
S1066Z-048S105	S1066Z-048A105	105	2.1875	2.229
S1066Z-048S108	S1066Z-048A108	108	2.2500	2.292
S1066Z-048S110	S1066Z-048A110	110	2.2917	2.333
S1066Z-048S115	S1066Z-048A115	115	2.3958	2.438
S1066Z-048S120	S1066Z-048A120	120	2.5000	2.542
S1066Z-048S126	S1066Z-048A126	126	2.6250	2.667
S1066Z-048S130	S1066Z-048A130	130	2.7083	2.750
S1066Z-048S132	S1066Z-048A132	132	2.7500	2.792
S1066Z-048S140	S1066Z-048A140	140	2.9167	2.958
S1066Z-048S144	S1066Z-048A144	144	3.0000	3.042
S1066Z-048S145	S1066Z-048A145	145	3.0208	3.063
S1066Z-048S150	S1066Z-048A150	150	3.1250	3.167
S1066Z-048S156	S1066Z-048A156	156	3.2500	3.292
S1066Z-048S160	S1066Z-048A160	160	3.3333	3.375
S1066Z-048S168	S1066Z-048A168	168	3.5000	3.542
S1066Z-048S170	S1066Z-048A170	170	3.5417	3.583
S1066Z-048S174	S1066Z-048A174	174	3.6250	3.667
S1066Z-048S180	S1066Z-048A180	180	3.7500	3.792
S1066Z-048S185	S1066Z-048A185	185	3.8542	3.896
S1066Z-048S192	S1066Z-048A192	192	4.0000	4.042
S1066Z-048S198	S1066Z-048A198	198	4.1250	4.167

* T4 or T351 Aluminum Alloy, anodized before cutting.

Available on special order: 14-1/2° P.A., teeth not listed, different bore size and/or material, passivation for stainless steel.

- AGMA Q10
- 20° PRESSURE ANGLE
- 3/16 FACE
- 3/16 BORE

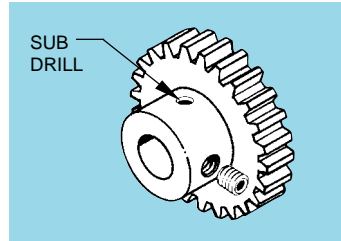
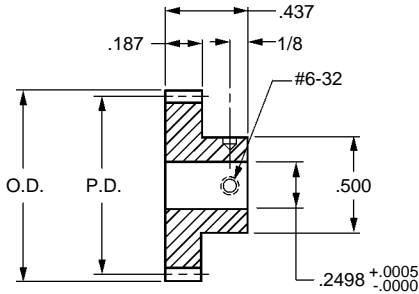


Catalog Number		No. of Teeth	P.D.	O.D.
303 Stainless Steel	2024 Aluminum * Anodized			
S1084Z-048S017	S1084Z-048A017	17	0.3542	0.396
S1084Z-048S018	S1084Z-048A018	18	0.3750	0.417
S1084Z-048S020	S1084Z-048A020	20	0.4167	0.458
S1084Z-048S021	S1084Z-048A021	21	0.4375	0.479
S1084Z-048S022	S1084Z-048A022	22	0.4583	0.500
S1084Z-048S024	S1084Z-048A024	24	0.5000	0.542
S1084Z-048S025	S1084Z-048A025	25	0.5208	0.563
S1084Z-048S026	S1084Z-048A026	26	0.5417	0.583
S1084Z-048S028	S1084Z-048A028	28	0.5833	0.625
S1084Z-048S030	S1084Z-048A030	30	0.6250	0.667
S1084Z-048S032	S1084Z-048A032	32	0.6667	0.708
S1084Z-048S036	S1084Z-048A036	36	0.7500	0.792
S1084Z-048S040	S1084Z-048A040	40	0.8333	0.875
S1084Z-048S048	S1084Z-048A048	48	1.0000	1.042
S1084Z-048S050	S1084Z-048A050	50	1.0417	1.083
S1084Z-048S056	S1084Z-048A056	56	1.1667	1.208
S1084Z-048S060	S1084Z-048A060	60	1.2500	1.292
S1084Z-048S064	S1084Z-048A064	64	1.3333	1.375
S1084Z-048S065	S1084Z-048A065	65	1.3542	1.396
S1084Z-048S072	S1084Z-048A072	72	1.5000	1.542
S1084Z-048S084	S1084Z-048A084	84	1.7500	1.792
S1084Z-048S090	S1084Z-048A090	90	1.8750	1.917
S1084Z-048S092	S1084Z-048A092	92	1.9167	1.958
S1084Z-048S096	S1084Z-048A096	96	2.0000	2.042
S1084Z-048S100	S1084Z-048A100	100	2.0833	2.125
S1084Z-048S120	S1084Z-048A120	120	2.5000	2.542
S1084Z-048S144	S1084Z-048A144	144	3.0000	3.042
S1084Z-048S156	S1084Z-048A156	156	3.2500	3.292
S1084Z-048S180	S1084Z-048A180	180	3.7500	3.792
S1084Z-048S198	S1084Z-048A198	198	4.1250	4.167

* T4 or T351 Aluminum Alloy, anodized before cutting.

Available on special order: 14-1/2° P.A., teeth not listed, different bore size and/or material, passivation for stainless steel.

- AGMA Q10
- 20° PRESSURE ANGLE
- 3/16 FACE
- 1/4 BORE



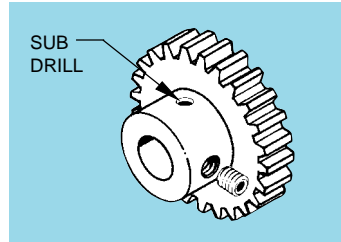
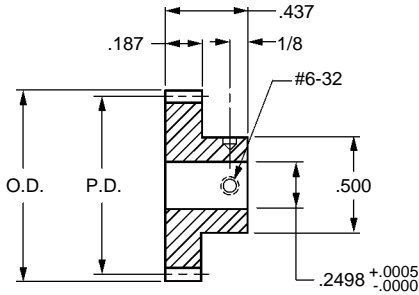
Catalog Number		No. of Teeth	P.D.	O.D.
303 Stainless Steel	2024 Aluminum * Anodized			
S1086Z-048S020	S1086Z-048A020	20	0.4167	0.458
S1086Z-048S021	S1086Z-048A021	21	0.4375	0.479
S1086Z-048S022	S1086Z-048A022	22	0.4583	0.500
S1086Z-048S023	S1086Z-048A023	23	0.4792	0.521
S1086Z-048S024	S1086Z-048A024	24	0.5000	0.542
S1086Z-048S025	S1086Z-048A025	25	0.5208	0.563
S1086Z-048S026	S1086Z-048A026	26	0.5417	0.583
S1086Z-048S027	S1086Z-048A027	27	0.5625	0.604
S1086Z-048S028	S1086Z-048A028	28	0.5833	0.625
S1086Z-048S029	S1086Z-048A029	29	0.6042	0.646
S1086Z-048S030	S1086Z-048A030	30	0.6250	0.667
S1086Z-048S031	S1086Z-048A031	31	0.6458	0.688
S1086Z-048S032	S1086Z-048A032	32	0.6667	0.708
S1086Z-048S033	S1086Z-048A033	33	0.6875	0.729
S1086Z-048S034	S1086Z-048A034	34	0.7083	0.750
S1086Z-048S035	S1086Z-048A035	35	0.7292	0.771
S1086Z-048S036	S1086Z-048A036	36	0.7500	0.792
S1086Z-048S038	S1086Z-048A038	38	0.7917	0.833
S1086Z-048S040	S1086Z-048A040	40	0.8333	0.875
S1086Z-048S042	S1086Z-048A042	42	0.8750	0.917
S1086Z-048S044	S1086Z-048A044	44	0.9167	0.958
S1086Z-048S045	S1086Z-048A045	45	0.9375	0.979
S1086Z-048S046	S1086Z-048A046	46	0.9583	1.000
S1086Z-048S048	S1086Z-048A048	48	1.0000	1.042
S1086Z-048S050	S1086Z-048A050	50	1.0417	1.083
S1086Z-048S052	S1086Z-048A052	52	1.0833	1.125
S1086Z-048S054	S1086Z-048A054	54	1.1250	1.167
S1086Z-048S055	S1086Z-048A055	55	1.1458	1.188
S1086Z-048S056	S1086Z-048A056	56	1.1667	1.208
S1086Z-048S057	S1086Z-048A057	57	1.1875	1.229

* T4 or T351 Aluminum Alloy, anodized before cutting.

Continued on the next page

Available on special order: 14-1/2° P.A., teeth not listed, different bore size and/or material, passivation for stainless steel.

- AGMA Q10
- 20° PRESSURE ANGLE
- 3/16 FACE
- 1/4 BORE



Catalog Number		No. of Teeth	P.D.	O.D.
303 Stainless Steel	2024 Aluminum * Anodized			
S1086Z-048S058	S1086Z-048A058	58	1.2083	1.250
S1086Z-048S060	S1086Z-048A060	60	1.2500	1.292
S1086Z-048S062	S1086Z-048A062	62	1.2917	1.333
S1086Z-048S064	S1086Z-048A064	64	1.3333	1.375
S1086Z-048S065	S1086Z-048A065	65	1.3542	1.396
S1086Z-048S068	S1086Z-048A068	68	1.4167	1.458
S1086Z-048S070	S1086Z-048A070	70	1.4583	1.500
S1086Z-048S072	S1086Z-048A072	72	1.5000	1.542
S1086Z-048S075	S1086Z-048A075	75	1.5625	1.604
S1086Z-048S080	S1086Z-048A080	80	1.6667	1.708
S1086Z-048S084	S1086Z-048A084	84	1.7500	1.792
S1086Z-048S085	S1086Z-048A085	85	1.7708	1.813
S1086Z-048S090	S1086Z-048A090	90	1.8750	1.917
S1086Z-048S095	S1086Z-048A095	95	1.9792	2.021
S1086Z-048S096	S1086Z-048A096	96	2.0000	2.042
S1086Z-048S100	S1086Z-048A100	100	2.0833	2.125
S1086Z-048S105	S1086Z-048A105	105	2.1875	2.229
S1086Z-048S108	S1086Z-048A108	108	2.2500	2.292
S1086Z-048S110	S1086Z-048A110	110	2.2917	2.333
S1086Z-048S120	S1086Z-048A120	120	2.5000	2.542
S1086Z-048S128	S1086Z-048A128	128	2.6667	2.708
S1086Z-048S130	S1086Z-048A130	130	2.7083	2.750
S1086Z-048S140	S1086Z-048A140	140	2.9167	2.958
S1086Z-048S150	S1086Z-048A150	150	3.1250	3.167
S1086Z-048S160	S1086Z-048A160	160	3.3333	3.375
S1086Z-048S168	S1086Z-048A168	168	3.5000	3.542
S1086Z-048S170	S1086Z-048A170	170	3.5417	3.583
S1086Z-048S180	S1086Z-048A180	180	3.7500	3.792
S1086Z-048S192	S1086Z-048A192	192	4.0000	4.042
S1086Z-048S198	S1086Z-048A198	198	4.1250	4.167

* T4 or T351 Aluminum Alloy, anodized before cutting.

Available on special order: 14-1/2° P.A., teeth not listed, different bore size and/or material, passivation for stainless steel.



Fairloc® Hub Acetal Spur Gears - 48 Pitch

- AGMA Q10
- 20° PRESSURE ANGLE
- 3/16 FACE
- 3/16, 1/4 & 3/8 BORES

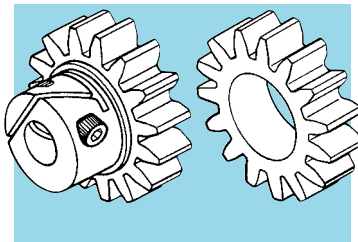
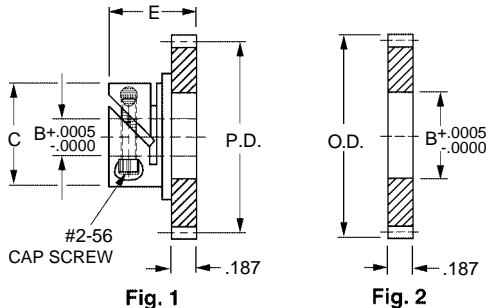


Fig. 1	Bore Ref.	C	E
	.1873	.438	.453
	.2498	.530	.483

MATERIAL: Gear – Acetal
Hub – 303 Stainless Steel

Catalog Number			No. of Teeth	P.D.	O.D.
FAIRLOC® TYPE HUB GEAR (Fig. 1)		HUBLESS (Fig. 2)			
B = ø.1873	B = ø.2498	B = ø.3750			
S1V84Z-048DS028	S1V86Z-048DS028	S1288Z-048D028	28	.5833	.625
S1V84Z-048DS029	S1V86Z-048DS029	S1288Z-048D029	29	.6042	.646
S1V84Z-048DS030	S1V86Z-048DS030	S1288Z-048D030	30	.6250	.667
S1V84Z-048DS032	S1V86Z-048DS032	S1288Z-048D032	32	.6667	.708
S1V84Z-048DS034	S1V86Z-048DS034	S1288Z-048D034	34	.7083	.750
S1V84Z-048DS036	S1V86Z-048DS036	S1288Z-048D036	36	.7500	.792
S1V84Z-048DS038	S1V86Z-048DS038	S1288Z-048D038	38	.7917	.833
S1V84Z-048DS040	S1V86Z-048DS040	S1288Z-048D040	40	.8333	.875
S1V84Z-048DS042	S1V86Z-048DS042	S1288Z-048D042	42	.8750	.917
S1V84Z-048DS044	S1V86Z-048DS044	S1288Z-048D044	44	.9167	.958
S1V84Z-048DS046	S1V86Z-048DS046	S1288Z-048D046	46	.9583	1.000
S1V84Z-048DS048	S1V86Z-048DS048	S1288Z-048D048	48	1.0000	1.042
S1V84Z-048DS050	S1V86Z-048DS050	S1288Z-048D050	50	1.0417	1.083
S1V84Z-048DS055	S1V86Z-048DS055	S1288Z-048D055	55	1.1458	1.188
S1V84Z-048DS056	S1V86Z-048DS056	S1288Z-048D056	56	1.1667	1.208
S1V84Z-048DS060	S1V86Z-048DS060	S1288Z-048D060	60	1.2500	1.292
S1V84Z-048DS064	S1V86Z-048DS064	S1288Z-048D064	64	1.3333	1.375
S1V84Z-048DS068	S1V86Z-048DS068	S1288Z-048D068	68	1.4167	1.458
S1V84Z-048DS072	S1V86Z-048DS072	S1288Z-048D072	72	1.5000	1.542
S1V84Z-048DS075	S1V86Z-048DS075	S1288Z-048D075	75	1.5625	1.604
S1V84Z-048DS080	S1V86Z-048DS080	S1288Z-048D080	80	1.6667	1.708
S1V84Z-048DS084	S1V86Z-048DS084	S1288Z-048D084	84	1.7500	1.792
S1V84Z-048DS090	S1V86Z-048DS090	S1288Z-048D090	90	1.8750	1.917
S1V84Z-048DS092	S1V86Z-048DS092	S1288Z-048D092	92	1.9167	1.958
S1V84Z-048DS096	S1V86Z-048DS096	S1288Z-048D096	96	2.0000	2.042
S1V84Z-048DS100	S1V86Z-048DS100	S1288Z-048D100	100	2.0833	2.125
S1V84Z-048DS110	S1V86Z-048DS110	S1288Z-048D110	110	2.2917	2.333
S1V84Z-048DS120	S1V86Z-048DS120	S1288Z-048D120	120	2.5000	2.542
S1V84Z-048DS132	S1V86Z-048DS132	S1288Z-048D132	132	2.7500	2.792
S1V84Z-048DS138	S1V86Z-048DS138	S1288Z-048D138	138	2.8750	2.917
S1V84Z-048DS144	S1V86Z-048DS144	S1288Z-048D144	144	3.0000	3.042
S1V84Z-048DS156	S1V86Z-048DS156	S1288Z-048D156	156	3.2500	3.292
S1V84Z-048DS168	S1V86Z-048DS168	S1288Z-048D168	168	3.5000	3.542
S1V84Z-048DS180	S1V86Z-048DS180	S1288Z-048D180	180	3.7500	3.792
S1V84Z-048DS186	S1V86Z-048DS186	S1288Z-048D186	186	3.8750	3.917

Available on special order: 14-1/2° P.A., teeth not listed or different bore size.

This product is also available with pin type hubs. See page 1-80.



Acetal Spur Gears - 48 Pitch

- AGMA Q10
- 20° PRESSURE ANGLE
- 3/16 FACE
- 3/16, 1/4 & 3/8 BORES

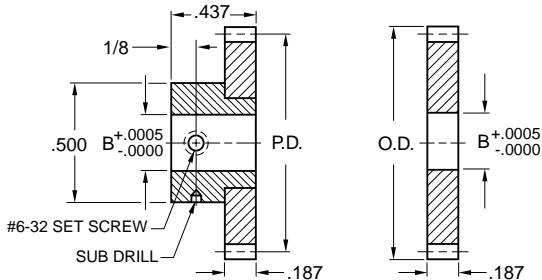
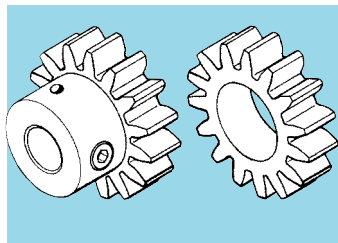


Fig. 1

Fig. 2



MATERIAL: Gear – Acetal
Hub – 303 Stainless Steel



Catalog Number			No. of Teeth	P.D.	O.D.
PIN TYPE HUB GEAR (Fig. 1)		HUBLESS (Fig. 2)			
B = ø.1873	B = ø.2498	B = ø.3750			
S1084Z-048DS028	S1086Z-048DS028	S1288Z-048D028	28	.5833	.625
S1084Z-048DS029	S1086Z-048DS029	S1288Z-048D029	29	.6042	.646
S1084Z-048DS030	S1086Z-048DS030	S1288Z-048D030	30	.6250	.667
S1084Z-048DS032	S1086Z-048DS032	S1288Z-048D032	32	.6667	.708
S1084Z-048DS034	S1086Z-048DS034	S1288Z-048D034	34	.7083	.750
S1084Z-048DS036	S1086Z-048DS036	S1288Z-048D036	36	.7500	.792
S1084Z-048DS038	S1086Z-048DS038	S1288Z-048D038	38	.7917	.833
S1084Z-048DS040	S1086Z-048DS040	S1288Z-048D040	40	.8333	.875
S1084Z-048DS042	S1086Z-048DS042	S1288Z-048D042	42	.8750	.917
S1084Z-048DS044	S1086Z-048DS044	S1288Z-048D044	44	.9167	.958
S1084Z-048DS046	S1086Z-048DS046	S1288Z-048D046	46	.9583	1.000
S1084Z-048DS048	S1086Z-048DS048	S1288Z-048D048	48	1.0000	1.042
S1084Z-048DS050	S1086Z-048DS050	S1288Z-048D050	50	1.0417	1.083
S1084Z-048DS055	S1086Z-048DS055	S1288Z-048D055	55	1.1458	1.188
S1084Z-048DS056	S1086Z-048DS056	S1288Z-048D056	56	1.1667	1.208
S1084Z-048DS060	S1086Z-048DS060	S1288Z-048D060	60	1.2500	1.292
S1084Z-048DS064	S1086Z-048DS064	S1288Z-048D064	64	1.3333	1.375
S1084Z-048DS068	S1086Z-048DS068	S1288Z-048D068	68	1.4167	1.458
S1084Z-048DS072	S1086Z-048DS072	S1288Z-048D072	72	1.5000	1.542
S1084Z-048DS075	S1086Z-048DS075	S1288Z-048D075	75	1.5625	1.604
S1084Z-048DS080	S1086Z-048DS080	S1288Z-048D080	80	1.6667	1.708
S1084Z-048DS084	S1086Z-048DS084	S1288Z-048D084	84	1.7500	1.792
S1084Z-048DS090	S1086Z-048DS090	S1288Z-048D090	90	1.8750	1.917
S1084Z-048DS092	S1086Z-048DS092	S1288Z-048D092	92	1.9167	1.958
S1084Z-048DS096	S1086Z-048DS096	S1288Z-048D096	96	2.0000	2.042
S1084Z-048DS100	S1086Z-048DS100	S1288Z-048D100	100	2.0833	2.125
S1084Z-048DS110	S1086Z-048DS110	S1288Z-048D110	110	2.2917	2.333
S1084Z-048DS120	S1086Z-048DS120	S1288Z-048D120	120	2.5000	2.542
S1084Z-048DS132	S1086Z-048DS132	S1288Z-048D132	132	2.7500	2.792
S1084Z-048DS138	S1086Z-048DS138	S1288Z-048D138	138	2.8750	2.917
S1084Z-048DS144	S1086Z-048DS144	S1288Z-048D144	144	3.0000	3.042
S1084Z-048DS156	S1086Z-048DS156	S1288Z-048D156	156	3.2500	3.292
S1084Z-048DS168	S1086Z-048DS168	S1288Z-048D168	168	3.5000	3.542
S1084Z-048DS180	S1086Z-048DS180	S1288Z-048D180	180	3.7500	3.792
S1084Z-048DS186	S1086Z-048DS186	S1288Z-048D186	186	3.8750	3.917

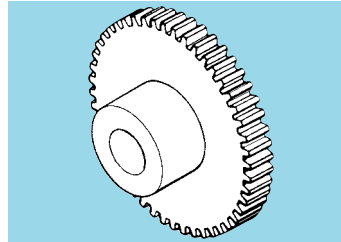
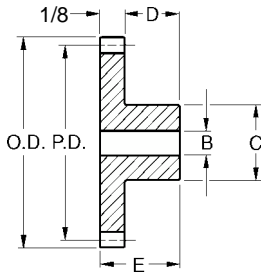
Available on special order: 14-1/2° P.A., teeth not listed, or different bore size.
This product is also available with Fairloc® hubs. See page 1-79.



Spur Gears - 48 Pitch

■ 14-1/2° PRESSURE ANGLE

■ 1/8 FACE WIDTH



MATERIAL: Brass

Catalog Number	No. of Teeth	P.D.	O.D.	B Bore	E Length	C Hub Dia.	D Hub Proj.	Type	
A 1B 2-N48048	48	1.000	1.042	1/4	3/8	1/2	1/4	Plain	
A 1B 2-N48052	52	1.083	1.125						
A 1B 2-N48054	54	1.125	1.167						
A 1B 2-N48056	56	1.167	1.208						
A 1B 2-N48060	60	1.250	1.292		3/8	1/2	1/4	Plain	
A 1B 2-N48064	64	1.333	1.375						
A 1B 2-N48066	66	1.375	1.417						
A 1B 2-N48072	72	1.500	1.542						
A 1B 2-N48080	80	1.667	1.708						
A 1B 2-N48084	84	1.750	1.792						
A 1B 2-N48096	96	2.000	2.042	3/8	1/2	1/4	Plain		
A 1B 2-N48096A	96	2.000	2.042					5/8	
A 1B 2-N48100	100	2.083	2.125	5/16	7/16	5/8	5/16	Plain	
A 1B 2-N48108	108	2.250	2.292						
A 1B 2-N48120	120	2.500	2.542						
A 1B 2-N48128	128	2.667	2.708						
A 1B 2-N48132	132	2.750	2.792		7/16	5/8	5/16	Plain Plain Spoked	
A 1B 2-N48144	144	3.000	3.042						
* A 1B 2-N48156A	156	3.250	3.292		7/16	11/16	3/4	5/16	Spoked Plain Spoked
A 1B 2-N48168	168	3.500	3.542						
* A 1B 2-N48180A	180	3.750	3.792						

* To be discontinued when present stock is depleted.

Gears other than standard stock sizes are available on special order.

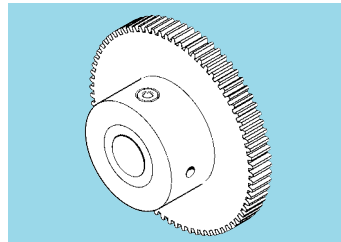
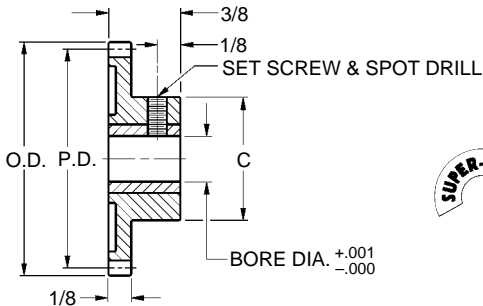


Nonmetallic Spur Gears - 48 Pitch

■ AGMA Q8

■ 20° PRESSURE ANGLE

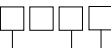
■ 1/8 FACE



QUALITY CLASS

CATALOG NUMBER DESIGNATION:

A 1 P 2 - Y48



No. of Teeth

Bore Code

- A .125 Dia.
- B .1875 Dia.
- C .250 Dia.

MATERIAL: Gear - Acetal
Insert - Brass

Gears under 60 teeth have no webs.

Basic Catalog Number	No. of Teeth	P.D.	O.D.	C Hub Dia.
A 1P 2-Y48028	28	.583	.625	33/64
A 1P 2-Y48029	29	.604	.646	
A 1P 2-Y48030	30	.625	.667	
A 1P 2-Y48031	31	.646	.688	
A 1P 2-Y48032	32	.667	.708	
A 1P 2-Y48033	33	.688	.729	
A 1P 2-Y48034	34	.708	.750	
A 1P 2-Y48035	35	.729	.771	
A 1P 2-Y48036	36	.750	.792	
A 1P 2-Y48037	37	.771	.813	
A 1P 2-Y48038	38	.792	.833	
A 1P 2-Y48039	39	.813	.854	5/8
A 1P 2-Y48040	40	.833	.875	
A 1P 2-Y48042	42	.875	.917	
A 1P 2-Y48044	44	.917	.958	
A 1P 2-Y48045	45	.938	.979	
A 1P 2-Y48046	46	.958	1.000	
A 1P 2-Y48048	48	1.000	1.042	
A 1P 2-Y48050	50	1.042	1.083	
A 1P 2-Y48052	52	1.083	1.125	

Basic Catalog Number	No. of Teeth	P.D.	O.D.	C Hub Dia.
A 1P 2-Y48054	54	1.125	1.167	5/8
A 1P 2-Y48055	55	1.146	1.188	
A 1P 2-Y48056	56	1.167	1.208	
A 1P 2-Y48058	58	1.208	1.250	
A 1P 2-Y48060	60	1.250	1.292	
A 1P 2-Y48064	64	1.333	1.375	
A 1P 2-Y48066	66	1.375	1.417	
A 1P 2-Y48068	68	1.417	1.458	
A 1P 2-Y48072	72	1.500	1.542	
A 1P 2-Y48075	75	1.563	1.604	
A 1P 2-Y48080	80	1.667	1.708	
A 1P 2-Y48084	84	1.750	1.792	3/4
A 1P 2-Y48090	90	1.875	1.917	
A 1P 2-Y48092	92	1.917	1.958	
A 1P 2-Y48096	96	2.000	2.042	
A 1P 2-Y48100	100	2.083	2.125	
A 1P 2-Y48108	108	2.250	2.292	
A 1P 2-Y48110	110	2.292	2.333	
A 1P 2-Y48120	120	2.500	2.542	
A 1P 2-Y48130	130	2.708	2.750	

NOTE: Gears under 60 teeth have no webs.

- Gears with: .125 Bore Have #2-56 Set Screw And Spot Drill
- .1875 Bore Have #4-40 Set Screw And Spot Drill
- .250 Bore Have #6-32 Set Screw And Spot Drill

Inch Inch Inch Inch Inch Inch Inch Inch Inch Inch

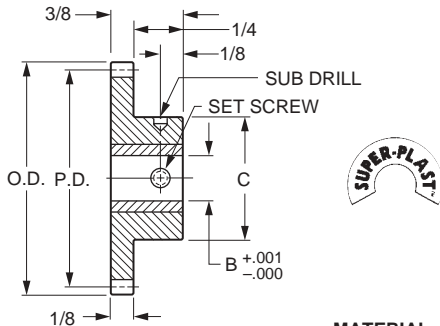
SDPSI

Molded Spur Gears - 48 Pitch

Stock Drive Products/Sterling Instrument ■ Phone: 516-328-3300 ■ Fax: 516-326-8827

■ 20° PRESSURE ANGLE

■ 1/8 FACE



MATERIAL: Gear - Acetal
Insert - Brass

Catalog Number	No. of Teeth	P.D.	O.D. +.000 -.010	B Bore	C Hub Dia.	Set Screw	Type	
A 1T 2-Y48018	18	.375	.417	1/8	5/16	#2-56	Plain	
A 1T 2-Y48019	19	.396	.438					
A 1T 2-Y48020	20	.417	.458					
A 1T 2-Y48021	21	.438	.479					
A 1T 2-Y48022	22	.458	.500					
A 1T 2-Y48023	23	.479	.521					
A 1T 2-Y48024	24	.500	.542	3/16	13/32	#4-40		
A 1T 2-Y48025	25	.521	.563					
A 1T 2-Y48026	26	.542	.583					
A 1T 2-Y48027	27	.563	.604					
A 1T 2-Y48028	28	.583	.625					
A 1T 2-Y48029	29	.604	.646					
A 1T 2-Y48030	30	.625	.667					
A 1T 2-Y48031	31	.646	.688					
A 1T 2-Y48032	32	.667	.708					
A 1T 2-Y48033	33	.688	.729					
A 1T 2-Y48034	34	.708	.750					
A 1T 2-Y48035	35	.729	.771					
A 1T 2-Y48036	36	.750	.792					
A 1T 2-Y48037	37	.771	.813	1/4	35/64	#6-32		
A 1T 2-Y48038	38	.792	.833					
A 1T 2-Y48039	39	.813	.854					
A 1T 2-Y48040	40	.833	.875					
A 1T 2-Y48040S	40	.833	.875					
A 1T 2-Y48042	42	.875	.917					
A 1T 2-Y48044	44	.917	.958					
A 1T 2-Y48045	45	.938	.979					
A 1T 2-Y48048	48	1.000	1.042		1/4		39/64	#6-32
A 1T 2-Y48052	52	1.083	1.125					
A 1T 2-Y48054	54	1.125	1.167					
A 1T 2-Y48056	56	1.167	1.208					
*A 1T 2-Y48056S	56	1.167	1.208					
A 1T 2-Y48060	60	1.250	1.292					
A 1T 2-Y48064	64	1.333	1.375					
A 1T 2-Y48066	66	1.375	1.417					
A 1T 2-Y48072	72	1.500	1.542					
A 1T 2-Y48080	80	1.667	1.708					
A 1T 2-Y48084	84	1.750	1.792					
A 1T 2-Y48096	96	2.000	2.042					
A 1T 2-Y48100	100	2.083	2.125	1/4	39/64	#6-32	Web	
A 1T 2-Y48108	108	2.250	2.292					
A 1T 2-Y48120	120	2.500	2.542					

* Has 2 set screws

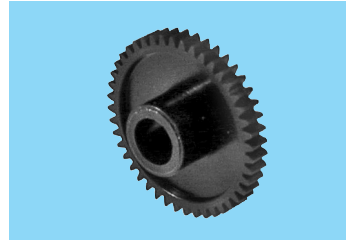
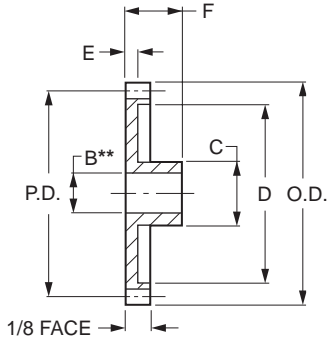


Molded Spur Gears - 48 Pitch

Stock Drive Products/Sterling Instrument ■ Phone: 516-328-3300 ■ Fax: 516-326-8827

■ AGMA 9

■ 20° TRUE PRESSURE ANGLE*



TRUE ANGLE™

PRECISION MOLDED TO AGMA 9 QUALITY

MATERIAL: Acetal

COLOR: Black

OPERATING TEMPERATURE: -40°F to 180°F

Catalog Number	No. of Teeth	P.D. +0.00 -0.01	O.D. +0.00 -0.01	B** Bore Nom.	C Hub Dia.	D	E Length	F		
A 1M 2-TA48010	10	.2083	.250	3/32	.152	Solid	Solid	.312		
A 1M 2-TA48012	12	.2500	.292	1/8	.194	Solid	Solid	.312		
A 1M 2-TA48014	14	.2917	.333		.235					
A 1M 2-TA48015	15	.3125	.354		.250	Solid	Solid			
A 1M 2-TA48016	16	.3333	.375							
A 1M 2-TA48018	18	.3750	.417	3/16	.312	Solid	Solid	.312		
A 1M 2-TA48020	20	.4167	.458							
A 1M 2-TA48022	22	.4583	.500							
A 1M 2-TA48024	24	.5000	.542							
A 1M 2-TA48026	26	.5417	.583	1/4	.375	Solid	Solid	.312		
A 1M 2-TA48030	30	.6250	.667		.375				.477	
A 1M 2-TA48032	32	.6667	.708						.518	.081
A 1M 2-TA48036	36	.7500	.792		.602					
A 1M 2-TA48040	40	.8333	.875	.375	.685	.081	.312	.312		
A 1M 2-TA48044	44	.9167	.958						.768	
A 1M 2-TA48048	48	1.0000	1.042						.437	.852
A 1M 2-TA48054	54	1.1250	1.166							.976
A 1M 2-TA48060	60	1.2500	1.292	1.102						
A 1M 2-TA48066	66	1.3750	1.417	.437	1.226	.081	.375	.375		
A 1M 2-TA48072	72	1.5000	1.542						1.352	
A 1M 2-TA48084	84	1.7500	1.792						1.602	
A 1M 2-TA48096	96	2.0000	2.042						.437	1.852
A 1M 2-TA48100	100	2.0833	2.125	1.935						

**BORE is for press fit on shaft size indicated.

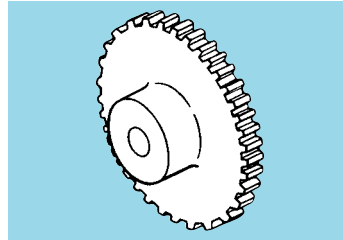
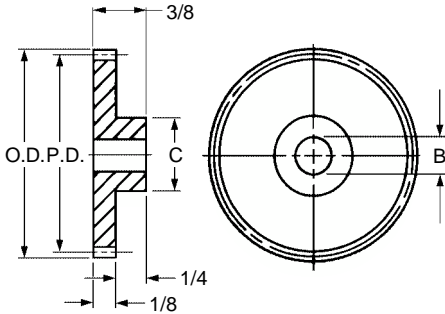
*Tooth profile and pressure angle of these gears are the same as metal gears that are manufactured by hobbing and shaping methods.



Molded Spur Gears - 48 Pitch

■ 20° PRESSURE ANGLE

■ 1/8 FACE



MATERIAL: Acetal

Catalog Number	No. of Teeth	P.D.	O.D.	B Bore	C Hub Dia.	Type
A 1M 2-Y48018	18	.375	.417	5/32	5/16	Plain
A 1M 2-Y48019	19	.396	.438			
A 1M 2-Y48020	20	.417	.458			
A 1M 2-Y48021	21	.438	.479			
A 1M 2-Y48022	22	.458	.500			
A 1M 2-Y48023	23	.479	.521			
A 1M 2-Y48024	24	.500	.542			
A 1M 2-Y48025	25	.521	.563			
A 1M 2-Y48026	26	.542	.583			
A 1M 2-Y48027	27	.563	.604			
A 1M 2-Y48028	28	.583	.625			
A 1M 2-Y48029	29	.604	.646			
A 1M 2-Y48030	30	.625	.667			
A 1M 2-Y48031	31	.646	.688			
A 1M 2-Y48032	32	.667	.708			
A 1M 2-Y48033	33	.688	.729			
A 1M 2-Y48034	34	.708	.750			
A 1M 2-Y48035	35	.729	.771			
A 1M 2-Y48036	36	.750	.792			
A 1M 2-Y48037	37	.771	.813			
A 1M 2-Y48038	38	.792	.833			
A 1M 2-Y48039	39	.813	.854			
A 1M 2-Y48040	40	.833	.875			
A 1M 2-Y48042	42	.875	.917			
A 1M 2-Y48044	44	.917	.958			
A 1M 2-Y48045	45	.938	.979			
A 1M 2-Y48048	48	1.000	1.042			
A 1M 2-Y48052	52	1.083	1.125			
A 1M 2-Y48054	54	1.125	1.167			
A 1M 2-Y48056	56	1.167	1.208			
A 1M 2-Y48060	60	1.250	1.292			
A 1M 2-Y48064	64	1.333	1.375			
A 1M 2-Y48066	66	1.375	1.417			
A 1M 2-Y48072	72	1.500	1.542			
A 1M 2-Y48080	80	1.667	1.708			
A 1M 2-Y48084	84	1.750	1.792			
A 1M 2-Y48096	96	2.000	2.042			
A 1M 2-Y48100	100	2.083	2.125			
A 1M 2-Y48108	108	2.250	2.292			
A 1M 2-Y48120	120	2.500	2.542			

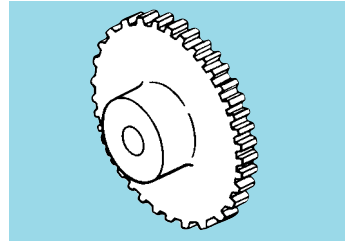
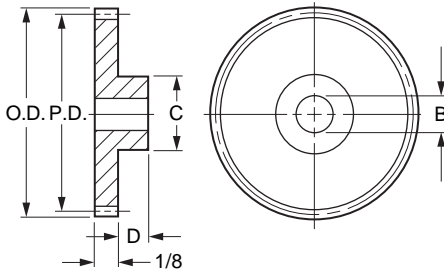


INCH

Molded Spur Gears - 48 Pitch

■ 14-1/2° PRESSURE ANGLE

■ 1/8 FACE WIDTH



MATERIAL: Nylon 101

Catalog Number	No. of Teeth	P.D.	O.D. Ref.	B Bore	C Hub Dia.	D Hub Proj.
A 1N 2-N48012	12	.250	.29	3/32	3/16	3/16
A 1N 2-N48014	14	.292	.33		1/4	
A 1N 2-N48016	16	.333	.37		5/16	
A 1N 2-N48018	18	.375	.41	1/8	3/8	1/4
A 1N 2-N48020	20	.417	.45			
A 1N 2-N48024	24	.500	.54			
A 1N 2-N48028	28	.583	.62			
A 1N 2-N48032	32	.667	.70	1/4	7/16	1/4
A 1N 2-N48036	36	.750	.79			
A 1N 2-N48040	40	.833	.87	3/16	5/8	1/4
A 1N 2-N48042	42	.875	.91			
A 1N 2-N48044	44	.917	.95	1/8	9/32	1/8
A 1N 2-N48048	48	1.000	1.04	3/16	5/8	1/4
A 1N 2-N48056	56	1.167	1.20			
A 1N 2-N48060	60	1.250	1.29	1/4	5/8	1/4
A 1N 2-N48064	64	1.333	1.37			
A 1N 2-N48072	72	1.500	1.54			
A 1N 2-N48080	80	1.667	1.70			
A 1N 2-N48096	96	2.000	2.04			
					1	1/4

For engineering assistance for all SDP components, call on our applications engineers.
Discounts available for large quantity orders.

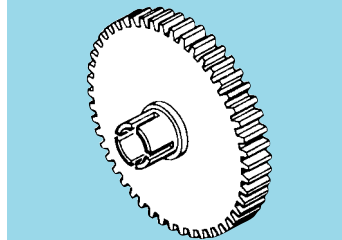
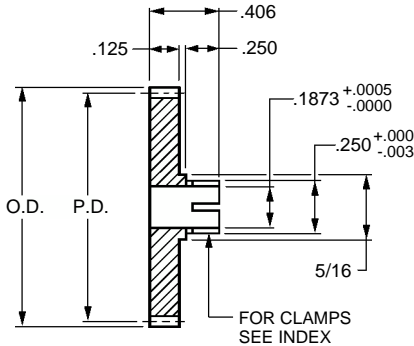
S INCH**Clamp Type Spur Gears - 48 Pitch**

■ AGMA Q10

■ 20° PRESSURE ANGLE

■ 1/8 FACE

■ 3/16 BORE

**S** Precision Component

Catalog Number		No. of Teeth	P.D.	O.D.
303 Stainless Steel	2024 Aluminum * Anodized			
S1164Z-048S017	S1164Z-048A017	17	0.3542	0.396
S1164Z-048S018	S1164Z-048A018	18	0.3750	0.417
S1164Z-048S019	S1164Z-048A019	19	0.3958	0.438
S1164Z-048S020	S1164Z-048A020	20	0.4167	0.458
S1164Z-048S021	S1164Z-048A021	21	0.4375	0.479
S1164Z-048S022	S1164Z-048A022	22	0.4583	0.500
S1164Z-048S024	S1164Z-048A024	24	0.5000	0.542
S1164Z-048S026	S1164Z-048A026	26	0.5417	0.583
S1164Z-048S027	S1164Z-048A027	27	0.5625	0.604
S1164Z-048S028	S1164Z-048A028	28	0.5833	0.625
S1164Z-048S030	S1164Z-048A030	30	0.6250	0.667
S1164Z-048S032	S1164Z-048A032	32	0.6667	0.708
S1164Z-048S036	S1164Z-048A036	36	0.7500	0.792
S1164Z-048S040	S1164Z-048A040	40	0.8333	0.875
S1164Z-048S042	S1164Z-048A042	42	0.8750	0.917
S1164Z-048S046	S1164Z-048A046	46	0.9583	1.000
S1164Z-048S048	S1164Z-048A048	48	1.0000	1.042
S1164Z-048S050	S1164Z-048A050	50	1.0417	1.083
S1164Z-048S052	S1164Z-048A052	52	1.0833	1.125
S1164Z-048S056	S1164Z-048A056	56	1.1667	1.208
S1164Z-048S060	S1164Z-048A060	60	1.2500	1.292
S1164Z-048S064	S1164Z-048A064	64	1.3333	1.375
S1164Z-048S066	S1164Z-048A066	66	1.3750	1.417
S1164Z-048S070	S1164Z-048A070	70	1.4583	1.500
S1164Z-048S072	S1164Z-048A072	72	1.5000	1.542
S1164Z-048S076	S1164Z-048A076	76	1.5833	1.625
S1164Z-048S080	S1164Z-048A080	80	1.6667	1.708
S1164Z-048S084	S1164Z-048A084	84	1.7500	1.792
S1164Z-048S088	S1164Z-048A088	88	1.8333	1.875
S1164Z-048S090	S1164Z-048A090	90	1.8750	1.917

* T4 or T351 Aluminum Alloy, anodized before cutting.

Available on special order: 14-1/2° P.A., teeth not listed, different bore size and/or material, passivation for stainless steel.



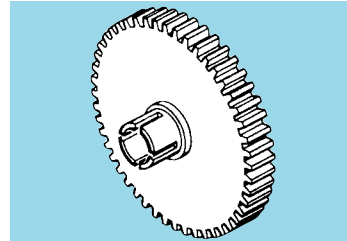
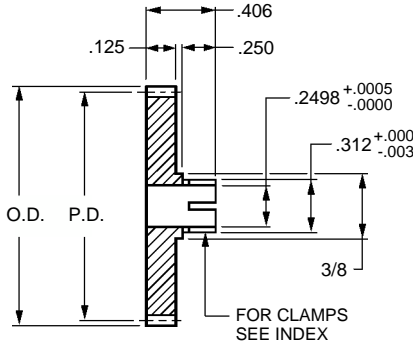
Clamp Type Spur Gears - 48 Pitch

■ AGMA Q10

■ 20° PRESSURE ANGLE

■ 1/8 FACE

■ 1/4 BORE



Catalog Number		No. of Teeth	P.D.	O.D.
303 Stainless Steel	2024 Aluminum * Anodized			
S1166Z-048S020	S1166Z-048A020	20	0.4167	0.458
S1166Z-048S023	S1166Z-048A023	23	0.4792	0.521
S1166Z-048S024	S1166Z-048A024	24	0.5000	0.542
S1166Z-048S025	S1166Z-048A025	25	0.5208	0.563
S1166Z-048S026	S1166Z-048A026	26	0.5417	0.583
S1166Z-048S027	S1166Z-048A027	27	0.5625	0.604
S1166Z-048S028	S1166Z-048A028	28	0.5833	0.625
S1166Z-048S029	S1166Z-048A029	29	0.6042	0.646
S1166Z-048S030	S1166Z-048A030	30	0.6250	0.667
S1166Z-048S032	S1166Z-048A032	32	0.6667	0.708
S1166Z-048S034	S1166Z-048A034	34	0.7083	0.750
S1166Z-048S035	S1166Z-048A035	35	0.7292	0.771
S1166Z-048S036	S1166Z-048A036	36	0.7500	0.792
S1166Z-048S038	S1166Z-048A038	38	0.7917	0.833
S1166Z-048S040	S1166Z-048A040	40	0.8333	0.875
S1166Z-048S042	S1166Z-048A042	42	0.8750	0.917
S1166Z-048S044	S1166Z-048A044	44	0.9167	0.958
S1166Z-048S045	S1166Z-048A045	45	0.9375	0.979
S1166Z-048S046	S1166Z-048A046	46	0.9583	1.000
S1166Z-048S048	S1166Z-048A048	48	1.0000	1.042
S1166Z-048S050	S1166Z-048A050	50	1.0417	1.083
S1166Z-048S054	S1166Z-048A054	54	1.1250	1.167
S1166Z-048S055	S1166Z-048A055	55	1.1458	1.188
S1166Z-048S056	S1166Z-048A056	56	1.1667	1.208
S1166Z-048S060	S1166Z-048A060	60	1.2500	1.292
S1166Z-048S064	S1166Z-048A064	64	1.3333	1.375
S1166Z-048S065	S1166Z-048A065	65	1.3542	1.396
S1166Z-048S070	S1166Z-048A070	70	1.4583	1.500
S1166Z-048S072	S1166Z-048A072	72	1.5000	1.542
S1166Z-048S075	S1166Z-048A075	75	1.5625	1.604

* T4 or T351 Aluminum Alloy, anodized before cutting.

Continued on the next page

Available on special order: 14-1/2° P.A., teeth not listed, different bore size and/or material, passivation for stainless steel.



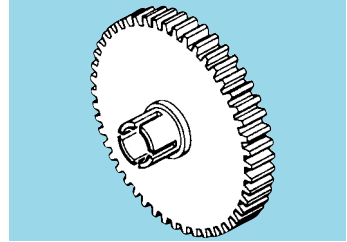
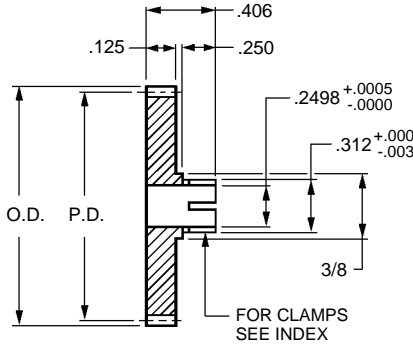
Clamp Type Spur Gears - 48 Pitch

■ AGMA Q10

■ 20° PRESSURE ANGLE

■ 1/8 FACE

■ 1/4 BORE



Catalog Number		No. of Teeth	P.D.	O.D.
303 Stainless Steel	2024 Aluminum * Anodized			
S1166Z-048S078	S1166Z-048A078	78	1.6250	1.667
S1166Z-048S080	S1166Z-048A080	80	1.6667	1.708
S1166Z-048S084	S1166Z-048A084	84	1.7500	1.792
S1166Z-048S085	S1166Z-048A085	85	1.7708	1.813
S1166Z-048S090	S1166Z-048A090	90	1.8750	1.917
S1166Z-048S092	S1166Z-048A092	92	1.9167	1.958
S1166Z-048S095	S1166Z-048A095	95	1.9792	2.021
S1166Z-048S096	S1166Z-048A096	96	2.0000	2.042
S1166Z-048S100	S1166Z-048A100	100	2.0833	2.125
S1166Z-048S105	S1166Z-048A105	105	2.1875	2.229
S1166Z-048S108	S1166Z-048A108	108	2.2500	2.292
S1166Z-048S110	S1166Z-048A110	110	2.2917	2.333
S1166Z-048S115	S1166Z-048A115	115	2.3958	2.438
S1166Z-048S120	S1166Z-048A120	120	2.5000	2.542
S1166Z-048S126	S1166Z-048A126	126	2.6250	2.667
S1166Z-048S130	S1166Z-048A130	130	2.7083	2.750
S1166Z-048S132	S1166Z-048A132	132	2.7500	2.792
S1166Z-048S140	S1166Z-048A140	140	2.9167	2.958
S1166Z-048S144	S1166Z-048A144	144	3.0000	3.042
S1166Z-048S145	S1166Z-048A145	145	3.0208	3.063
S1166Z-048S150	S1166Z-048A150	150	3.1250	3.167
S1166Z-048S156	S1166Z-048A156	156	3.2500	3.292
S1166Z-048S160	S1166Z-048A160	160	3.3333	3.375
S1166Z-048S168	S1166Z-048A168	168	3.5000	3.542
S1166Z-048S170	S1166Z-048A170	170	3.5417	3.583
S1166Z-048S174	S1166Z-048A174	174	3.6250	3.667
S1166Z-048S180	S1166Z-048A180	180	3.7500	3.792
S1166Z-048S185	S1166Z-048A185	185	3.8542	3.896
S1166Z-048S192	S1166Z-048A192	192	4.0000	4.042
S1166Z-048S198	S1166Z-048A198	198	4.1250	4.167

* T4 or T351 Aluminum Alloy, anodized before cutting.

Available on special order: 14-1/2° P.A., teeth not listed, different bore size and/or material, passivation for stainless steel.

