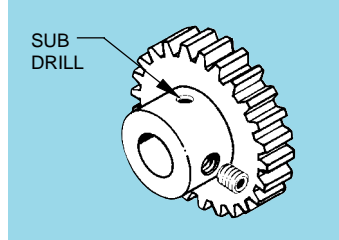
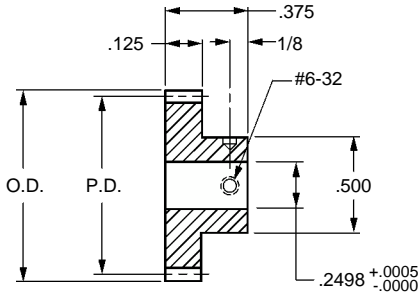


■ AGMA Q10

■ 20° PRESSURE ANGLE

■ 1/8 FACE

■ 1/4 BORE

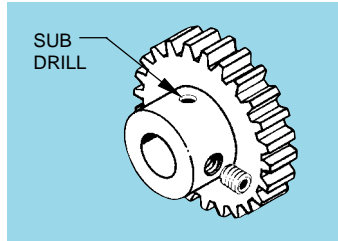
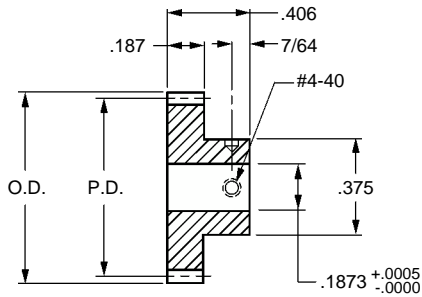


Catalog Number		No. of Teeth	P.D.	O.D.
303 Stainless Steel	2024 Aluminum * Anodized			
S1066Z-032S014	S1066Z-032A014	14	0.4375	0.500
S1066Z-032S018	S1066Z-032A018	18	0.5625	0.625
S1066Z-032S020	S1066Z-032A020	20	0.6250	0.688
S1066Z-032S024	S1066Z-032A024	24	0.7500	0.813
S1066Z-032S026	S1066Z-032A026	26	0.8125	0.875
S1066Z-032S028	S1066Z-032A028	28	0.8750	0.938
S1066Z-032S030	S1066Z-032A030	30	0.9375	1.000
S1066Z-032S032	S1066Z-032A032	32	1.0000	1.063
S1066Z-032S036	S1066Z-032A036	36	1.1250	1.188
S1066Z-032S040	S1066Z-032A040	40	1.2500	1.313
S1066Z-032S042	S1066Z-032A042	42	1.3125	1.375
S1066Z-032S048	S1066Z-032A048	48	1.5000	1.563
S1066Z-032S050	S1066Z-032A050	50	1.5625	1.625
S1066Z-032S054	S1066Z-032A054	54	1.6875	1.750
S1066Z-032S056	S1066Z-032A056	56	1.7500	1.813
S1066Z-032S060	S1066Z-032A060	60	1.8750	1.938
S1066Z-032S064	S1066Z-032A064	64	2.0000	2.063
S1066Z-032S070	S1066Z-032A070	70	2.1875	2.250
S1066Z-032S072	S1066Z-032A072	72	2.2500	2.313
S1066Z-032S075	S1066Z-032A075	75	2.3438	2.406
S1066Z-032S076	S1066Z-032A076	76	2.3750	2.438
S1066Z-032S080	S1066Z-032A080	80	2.5000	2.563
S1066Z-032S088	S1066Z-032A088	88	2.7500	2.813
S1066Z-032S090	S1066Z-032A090	90	2.8125	2.875
S1066Z-032S096	S1066Z-032A096	96	3.0000	3.063
S1066Z-032S100	S1066Z-032A100	100	3.1250	3.188
S1066Z-032S110	S1066Z-032A110	110	3.4375	3.500
S1066Z-032S120	S1066Z-032A120	120	3.7500	3.813
S1066Z-032S124	S1066Z-032A124	124	3.8750	3.938
S1066Z-032S130	S1066Z-032A130	130	4.0625	4.125

* T4 or T351 Aluminum Alloy, anodized before cutting.

Available on special order: 14-1/2° P.A., teeth not listed, different bore size and/or material, passivation for stainless steel.

- AGMA Q10
- 20° PRESSURE ANGLE
- 3/16 FACE
- 3/16 BORE

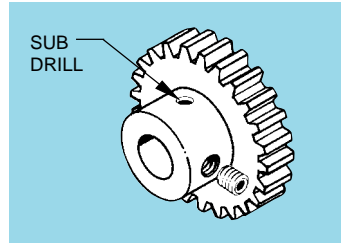
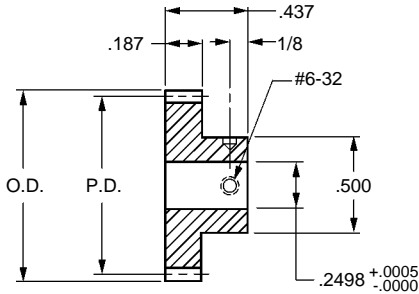


Catalog Number		No. of Teeth	P.D.	O.D.
303 Stainless Steel	2024 Aluminum * Anodized			
S1084Z-032S012	S1084Z-032A012	12	0.3750	0.438
S1084Z-032S016	S1084Z-032A016	16	0.5000	0.563
S1084Z-032S018	S1084Z-032A018	18	0.5625	0.625
S1084Z-032S020	S1084Z-032A020	20	0.6250	0.688
S1084Z-032S022	S1084Z-032A022	22	0.6875	0.750
S1084Z-032S024	S1084Z-032A024	24	0.7500	0.813
S1084Z-032S026	S1084Z-032A026	26	0.8125	0.875
S1084Z-032S028	S1084Z-032A028	28	0.8750	0.938
S1084Z-032S030	S1084Z-032A030	30	0.9375	1.000
S1084Z-032S032	S1084Z-032A032	32	1.0000	1.063
S1084Z-032S036	S1084Z-032A036	36	1.1250	1.188
S1084Z-032S040	S1084Z-032A040	40	1.2500	1.313
S1084Z-032S048	S1084Z-032A048	48	1.5000	1.563
S1084Z-032S056	S1084Z-032A056	56	1.7500	1.813
S1084Z-032S060	S1084Z-032A060	60	1.8750	1.938
S1084Z-032S064	S1084Z-032A064	64	2.0000	2.063
S1084Z-032S068	S1084Z-032A068	68	2.1250	2.188
S1084Z-032S072	S1084Z-032A072	72	2.2500	2.313
S1084Z-032S080	S1084Z-032A080	80	2.5000	2.563
S1084Z-032S084	S1084Z-032A084	84	2.6250	2.688
S1084Z-032S088	S1084Z-032A088	88	2.7500	2.813
S1084Z-032S092	S1084Z-032A092	92	2.8750	2.938
S1084Z-032S096	S1084Z-032A096	96	3.0000	3.063
S1084Z-032S100	S1084Z-032A100	100	3.1250	3.188
S1084Z-032S108	S1084Z-032A108	108	3.3750	3.438
S1084Z-032S112	S1084Z-032A112	112	3.5000	3.563
S1084Z-032S116	S1084Z-032A116	116	3.6250	3.688
S1084Z-032S120	S1084Z-032A120	120	3.7500	3.813
S1084Z-032S128	S1084Z-032A128	128	4.0000	4.063
S1084Z-032S130	S1084Z-032A130	130	4.0625	4.125

* T4 or T351 Aluminum Alloy, anodized before cutting.

Available on special order: 14-1/2° P.A., teeth not listed, different bore size and/or material, passivation for stainless steel.

- AGMA Q10
- 20° PRESSURE ANGLE
- 3/16 FACE
- 1/4 BORE



Catalog Number		No. of Teeth	P.D.	O.D.
303 Stainless Steel	2024 Aluminum * Anodized			
S1086Z-032S014	S1086Z-032A014	14	0.4375	0.500
S1086Z-032S016	S1086Z-032A016	16	0.5000	0.563
S1086Z-032S018	S1086Z-032A018	18	0.5625	0.625
S1086Z-032S020	S1086Z-032A020	20	0.6250	0.688
S1086Z-032S022	S1086Z-032A022	22	0.6875	0.750
S1086Z-032S024	S1086Z-032A024	24	0.7500	0.813
S1086Z-032S026	S1086Z-032A026	26	0.8125	0.875
S1086Z-032S028	S1086Z-032A028	28	0.8750	0.938
S1086Z-032S030	S1086Z-032A030	30	0.9375	1.000
S1086Z-032S032	S1086Z-032A032	32	1.0000	1.063
S1086Z-032S034	S1086Z-032A034	34	1.0625	1.125
S1086Z-032S036	S1086Z-032A036	36	1.1250	1.188
S1086Z-032S040	S1086Z-032A040	40	1.2500	1.313
S1086Z-032S048	S1086Z-032A048	48	1.5000	1.563
S1086Z-032S052	S1086Z-032A052	52	1.6250	1.688
S1086Z-032S056	S1086Z-032A056	56	1.7500	1.813
S1086Z-032S060	S1086Z-032A060	60	1.8750	1.938
S1086Z-032S064	S1086Z-032A064	64	2.0000	2.063
S1086Z-032S072	S1086Z-032A072	72	2.2500	2.313
S1086Z-032S076	S1086Z-032A076	76	2.3750	2.438
S1086Z-032S080	S1086Z-032A080	80	2.5000	2.563
S1086Z-032S088	S1086Z-032A088	88	2.7500	2.813
S1086Z-032S092	S1086Z-032A092	92	2.8750	2.938
S1086Z-032S096	S1086Z-032A096	96	3.0000	3.063
S1086Z-032S100	S1086Z-032A100	100	3.1250	3.188
S1086Z-032S112	S1086Z-032A112	112	3.5000	3.563
S1086Z-032S120	S1086Z-032A120	120	3.7500	3.813
S1086Z-032S128	S1086Z-032A128	128	4.0000	4.063
S1086Z-032S130	S1086Z-032A130	130	4.0625	4.125
S1086Z-032S132	S1086Z-032A132	132	4.1250	4.188

* T4 or T351 Aluminum Alloy, anodized before cutting.

Available on special order: 14-1/2° P.A., teeth not listed, different bore size and/or material, passivation for stainless steel.

Inch Inch Inch Inch Inch Inch Inch Inch Inch Inch

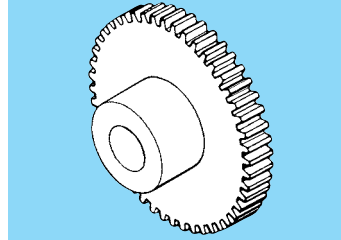
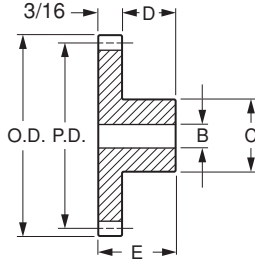
SDPSI

Spur Gears - 32 Pitch

Stock Drive Products/Sterling Instrument ■ Phone: 516-328-3300 ■ Fax: 516-326-8827

■ 14-1/2° PRESSURE ANGLE

■ 3/16 FACE WIDTH



MATERIAL: Brass

Catalog Number	No. of Teeth	P.D.	O.D.	B Bore	E Length	C Hub Dia.	D Hub Proj.	Type	
A 1B 2-N32040	40	1.250	1.313	1/4	7/16	1/2	1/4	Plain	
A 1B 2-N32044	44	1.375	1.438						
A 1B 2-N32048	48	1.500	1.563						
A 1B 2-N32052	52	1.625	1.688						
A 1B 2-N32056A	56	1.750	1.813	5/16	7/16	5/8	1/4	Plain	
A 1B 2-N32060	60	1.875	1.938						
A 1B 2-N32064	64	2.000	2.063		1/2	5/8	5/16	Plain	
A 1B 2-N32064A	64	2.000	2.063						
A 1B 2-N32072	72	2.250	2.313		1/2	5/8	1/4	Plain	
A 1B 2-N32072A	72	2.250	2.313						
A 1B 2-N32080	80	2.500	2.563		7/16	5/8	5/16	1/4	Plain
A 1B 2-N32080A									
A 1B 2-N32096	96	3.000	3.063		7/16	5/8	1/4	Spoked	
A 1B 2-N32096A									
A 1B 2-N32108	108	3.375	3.438		7/16	3/4	1/4	Plain	
A 1B 2-N32120	120	3.750	3.813						
A 1B 2-N32128	128	4.000	4.063		7/16	3/4	1/4	Spoked	
A 1B 2-N32128A	128	4.000	4.063						
A 1B 2-N32132	132	4.125	4.188	7/16	3/4	1/4	Spoked		
A 1B 2-N32192	192	6.000	6.063						

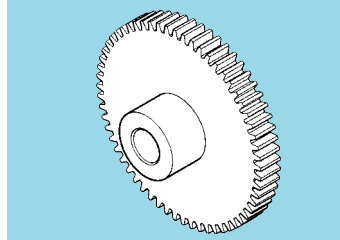
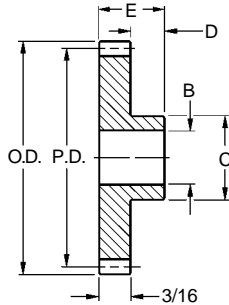
Gears other than standard stock sizes are available on special order.



Spur Gears - 32 Pitch

■ 14-1/2° PRESSURE ANGLE

■ 3/16 FACE



MATERIAL: Steel

Catalog Number	No. of Teeth	P.D.	O.D.	B Bore	E Length	C Hub Dia.	D Hub Proj.
A 1C 2-N32012	12	.375	.438	3/16	7/16	5/16	1/4
A 1C 2-N32015	15	.469	.531	3/16	1/2	3/8	5/16
A 1C 2-N32016	16	.500	.562			13/32	
A 1C 2-N32018	18	.562	.625	1/4	1/2	15/32	5/16
A 1C 2-N32020	20	.625	.687			17/32	
A 1C 2-N32022	22	.687	.750	5/16	1/2	19/32	5/16
A 1C 2-N32024	24	.750	.812			21/32	
A 1C 2-N32026	26	.812	.875	5/16	1/2	23/32	5/16
A 1C 2-N32028	28	.875	.937			3/4	
A 1C 2-N32030	30	.937	1.000	5/16	9/16	3/4	3/8
A 1C 2-N32032	32	1.000	1.062				
A 1C 2-N32032A	32	1.000	1.062	3/8	9/16	7/8	3/8
A 1C 2-N32040	40	1.250	1.312				
A 1C 2-N32048	48	1.500	1.562	3/8	9/16	1	3/8
A 1C 2-N32056	56	1.750	1.812				
A 1C 2-N32064	64	2.000	2.062	3/8	11/16	1-1/8	3/8
A 1C 2-N32080	80	2.500	2.562				
A 1C 2-N32096	96	3.000	3.062	3/8	11/16	1-3/8	1/2
A 1C 2-N32128	128	4.000	4.062				
A 1C 2-N32160	160	5.000	5.062	3/8	13/16	1-1/2	5/8
A 1C 2-N32192	192	6.000	6.062				
A 1C 2-N32200	200	6.250	6.312				



Fairloc® Hub Acetal Spur Gears - 32 Pitch

- AGMA Q10
- 20° PRESSURE ANGLE
- 3/16 FACE
- 3/16, 1/4 & 3/8 BORES

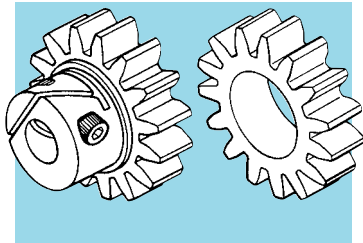
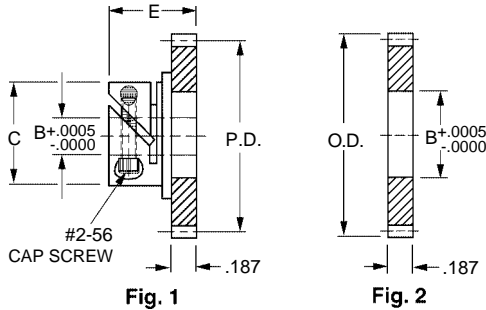


Fig. 1	Bore Ref.	C	E
	.1873	.438	.453
	.2498	.530	.483

MATERIAL: Gear – Acetal
Hub – 303 Stainless Steel

Catalog Number			No. of Teeth	P.D.	O.D.
FAIRLOC® TYPE HUB GEAR (Fig. 1)		HUBLESS (Fig. 2)			
B = ø.1873	B = ø.2498	B = ø.3750			
S1V84Z-032DS020	S1V86Z-032DS020	S1288Z-032D020	20	.6250	.688
S1V84Z-032DS021	S1V86Z-032DS021	S1288Z-032D021	21	.6563	.719
S1V84Z-032DS022	S1V86Z-032DS022	S1288Z-032D022	22	.6875	.750
S1V84Z-032DS023	S1V86Z-032DS023	S1288Z-032D023	23	.7188	.781
S1V84Z-032DS024	S1V86Z-032DS024	S1288Z-032D024	24	.7500	.813
S1V84Z-032DS025	S1V86Z-032DS025	S1288Z-032D025	25	.7813	.844
S1V84Z-032DS026	S1V86Z-032DS026	S1288Z-032D026	26	.8125	.875
S1V84Z-032DS028	S1V86Z-032DS028	S1288Z-032D028	28	.8750	.938
S1V84Z-032DS030	S1V86Z-032DS030	S1288Z-032D030	30	.9375	1.000
S1V84Z-032DS032	S1V86Z-032DS032	S1288Z-032D032	32	1.0000	1.063
S1V84Z-032DS036	S1V86Z-032DS036	S1288Z-032D036	36	1.1250	1.188
S1V84Z-032DS040	S1V86Z-032DS040	S1288Z-032D040	40	1.2500	1.313
S1V84Z-032DS042	S1V86Z-032DS042	S1288Z-032D042	42	1.3125	1.375
S1V84Z-032DS044	S1V86Z-032DS044	S1288Z-032D044	44	1.3750	1.438
S1V84Z-032DS046	S1V86Z-032DS046	S1288Z-032D046	46	1.4375	1.500
S1V84Z-032DS048	S1V86Z-032DS048	S1288Z-032D048	48	1.5000	1.563
S1V84Z-032DS050	S1V86Z-032DS050	S1288Z-032D050	50	1.5625	1.625
S1V84Z-032DS052	S1V86Z-032DS052	S1288Z-032D052	52	1.6250	1.688
S1V84Z-032DS056	S1V86Z-032DS056	S1288Z-032D056	56	1.7500	1.813
S1V84Z-032DS060	S1V86Z-032DS060	S1288Z-032D060	60	1.8750	1.938
S1V84Z-032DS063	S1V86Z-032DS063	S1288Z-032D063	63	1.9688	2.031
S1V84Z-032DS064	S1V86Z-032DS064	S1288Z-032D064	64	2.0000	2.063
S1V84Z-032DS066	S1V86Z-032DS066	S1288Z-032D066	66	2.0625	2.125
S1V84Z-032DS069	S1V86Z-032DS069	S1288Z-032D069	69	2.1563	2.219
S1V84Z-032DS072	S1V86Z-032DS072	S1288Z-032D072	72	2.2500	2.313
S1V84Z-032DS075	S1V86Z-032DS075	S1288Z-032D075	75	2.3438	2.406
S1V84Z-032DS080	S1V86Z-032DS080	S1288Z-032D080	80	2.5000	2.563
S1V84Z-032DS084	S1V86Z-032DS084	S1288Z-032D084	84	2.6250	2.688
S1V84Z-032DS088	S1V86Z-032DS088	S1288Z-032D088	88	2.7500	2.813
S1V84Z-032DS092	S1V86Z-032DS092	S1288Z-032D092	92	2.8750	2.938
S1V84Z-032DS096	S1V86Z-032DS096	S1288Z-032D096	96	3.0000	3.063
S1V84Z-032DS104	S1V86Z-032DS104	S1288Z-032D104	104	3.2500	3.313
S1V84Z-032DS108	S1V86Z-032DS108	S1288Z-032D108	108	3.3750	3.438
S1V84Z-032DS112	S1V86Z-032DS112	S1288Z-032D112	112	3.5000	3.563
S1V84Z-032DS124	S1V86Z-032DS124	S1288Z-032D124	124	3.8750	3.938

Available on special order: 14-1/2° P.A., teeth not listed or different bore size.
This product is also available with pin type hubs. See page 1-105.



Acetal Spur Gears - 32 Pitch

- AGMA Q10
- 20° PRESSURE ANGLE
- 3/16 FACE
- 3/16, 1/4 & 3/8 BORES

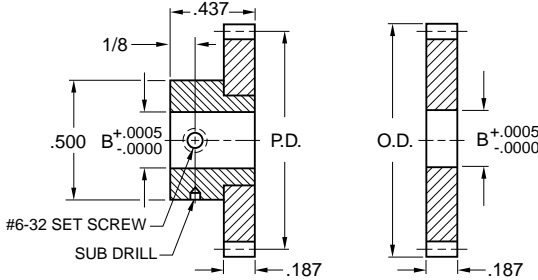
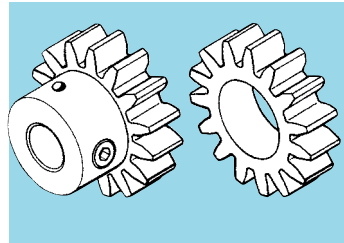


Fig. 1

Fig. 2

MATERIAL: Gear – Acetal
Hub – 303 Stainless Steel



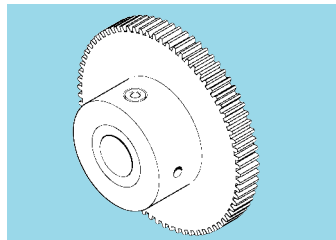
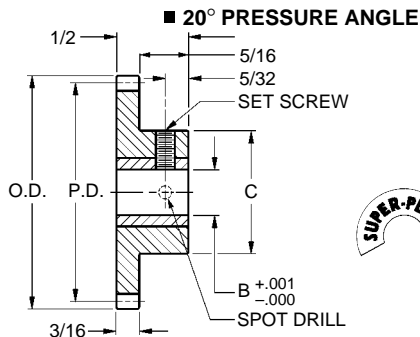
Catalog Number			No. of Teeth	P.D.	O.D.
PIN TYPE HUB GEAR (Fig. 1)		HUBLESS (Fig. 2)			
B = ø.1873	B = ø.2498	B = ø.3750			
S1084Z-032DS020	S1086Z-032DS020	S1288Z-032D020	20	.6250	.688
S1084Z-032DS021	S1086Z-032DS021	S1288Z-032D021	21	.6563	.719
S1084Z-032DS022	S1086Z-032DS022	S1288Z-032D022	22	.6875	.750
S1084Z-032DS023	S1086Z-032DS023	S1288Z-032D023	23	.7188	.781
S1084Z-032DS024	S1086Z-032DS024	S1288Z-032D024	24	.7500	.813
S1084Z-032DS025	S1086Z-032DS025	S1288Z-032D025	25	.7813	.844
S1084Z-032DS026	S1086Z-032DS026	S1288Z-032D026	26	.8125	.875
S1084Z-032DS028	S1086Z-032DS028	S1288Z-032D028	28	.8750	.938
S1084Z-032DS030	S1086Z-032DS030	S1288Z-032D030	30	.9375	1.000
S1084Z-032DS032	S1086Z-032DS032	S1288Z-032D032	32	1.0000	1.063
S1084Z-032DS036	S1086Z-032DS036	S1288Z-032D036	36	1.1250	1.188
S1084Z-032DS040	S1086Z-032DS040	S1288Z-032D040	40	1.2500	1.313
S1084Z-032DS042	S1086Z-032DS042	S1288Z-032D042	42	1.3125	1.375
S1084Z-032DS044	S1086Z-032DS044	S1288Z-032D044	44	1.3750	1.438
S1084Z-032DS046	S1086Z-032DS046	S1288Z-032D046	46	1.4375	1.500
S1084Z-032DS048	S1086Z-032DS048	S1288Z-032D048	48	1.5000	1.563
S1084Z-032DS050	S1086Z-032DS050	S1288Z-032D050	50	1.5625	1.625
S1084Z-032DS052	S1086Z-032DS052	S1288Z-032D052	52	1.6250	1.688
S1084Z-032DS056	S1086Z-032DS056	S1288Z-032D056	56	1.7500	1.813
S1084Z-032DS060	S1086Z-032DS060	S1288Z-032D060	60	1.8750	1.938
S1084Z-032DS063	S1086Z-032DS063	S1288Z-032D063	63	1.9688	2.031
S1084Z-032DS064	S1086Z-032DS064	S1288Z-032D064	64	2.0000	2.063
S1084Z-032DS066	S1086Z-032DS066	S1288Z-032D066	66	2.0625	2.125
S1084Z-032DS069	S1086Z-032DS069	S1288Z-032D069	69	2.1563	2.219
S1084Z-032DS072	S1086Z-032DS072	S1288Z-032D072	72	2.2500	2.313
S1084Z-032DS075	S1086Z-032DS075	S1288Z-032D075	75	2.3438	2.406
S1084Z-032DS080	S1086Z-032DS080	S1288Z-032D080	80	2.5000	2.563
S1084Z-032DS084	S1086Z-032DS084	S1288Z-032D084	84	2.6250	2.688
S1084Z-032DS088	S1086Z-032DS088	S1288Z-032D088	88	2.7500	2.813
S1084Z-032DS092	S1086Z-032DS092	S1288Z-032D092	92	2.8750	2.938
S1084Z-032DS096	S1086Z-032DS096	S1288Z-032D096	96	3.0000	3.063
S1084Z-032DS104	S1086Z-032DS104	S1288Z-032D104	104	3.2500	3.313
S1084Z-032DS108	S1086Z-032DS108	S1288Z-032D108	108	3.3750	3.438
S1084Z-032DS112	S1086Z-032DS112	S1288Z-032D112	112	3.5000	3.563
S1084Z-032DS124	S1086Z-032DS124	S1288Z-032D124	124	3.8750	3.938

Available on special order: 14-1/2° P.A., teeth not listed, or different bore size.

This product is also available with Fairloc® hubs. See page 1-104.



Molded Spur Gears - 32 Pitch



MATERIAL: Gear - Acetal
Insert - Brass

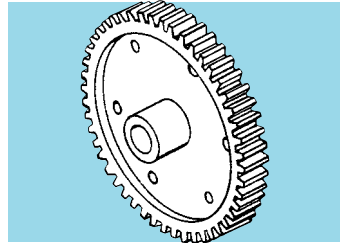
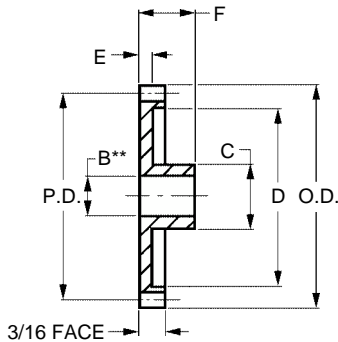
Catalog Number	No. of Teeth	P.D.	O.D.	B Bore	C Hub Dia.	Set Screw	Type
A 1T 2-Y32012	12	.375	.438	1/8	9/32	#2-56	Plain
A 1T 2-Y32014	14	.438	.500		5/16		
A 1T 2-Y32015	15	.469	.531		5/16		
A 1T 2-Y32016	16	.500	.563		11/32		
A 1T 2-Y32018	18	.563	.625	3/16	11/32	#4-40	
A 1T 2-Y32020	20	.625	.688		1/2		
A 1T 2-Y32022	22	.688	.750		1/2		
A 1T 2-Y32024	24	.750	.813		9/16		
A 1T 2-Y32026	26	.813	.875	1/4	1/2	#6-32	
A 1T 2-Y32028	28	.875	.938		9/16		
A 1T 2-Y32030	30	.938	1.000		1/2		
A 1T 2-Y32032	32	1.000	1.063		5/8		
A 1T 2-Y32034	34	1.063	1.125	5/16	39/64	#8-32	Web
A 1T 2-Y32036	36	1.125	1.188				
A 1T 2-Y32038	38	1.188	1.250				
A 1T 2-Y32040	40	1.250	1.313				
A 1T 2-Y32042	42	1.313	1.375	5/16	13/16	#8-32	
A 1T 2-Y32044	44	1.375	1.438				
A 1T 2-Y32048	48	1.500	1.563				
A 1T 2-Y32052	52	1.625	1.688				
A 1T 2-Y32056	56	1.750	1.813	5/16	13/16	#8-32	
A 1T 2-Y32064	64	2.000	2.063				
A 1T 2-Y32072	72	2.250	2.313				
A 1T 2-Y32080	80	2.500	2.563				
A 1T 2-Y32096	96	3.000	3.063				



Molded Spur Gears - 32 Pitch

■ AGMA Q9

■ 20° TRUE PRESSURE ANGLE*



TRUE ANGLE™

PRECISION MOLDED TO AGMA 9 QUALITY

MATERIAL: Acetal

COLOR: Black

OPERATING TEMPERATURE: -40°F to 180°F

Catalog Number	No. of Teeth	P.D. +0.000 -0.010	O.D. +0.000 -0.010	B** Bore Nom.	C Hub Dia.	D	E	F					
A 1M 2-TA32008	8	.2500	.313	3/32	.162	Solid	Solid	.375					
A 1M 2-TA32010	10	.3125	.375	1/8	.225	Solid	Solid	.375					
A 1M 2-TA32012	12	.3750	.438	3/16	.285	Solid	Solid	.375					
A 1M 2-TA32014	14	.4375	.500		.312	Solid	Solid	.375					
A 1M 2-TA32015	15	.4688	.531		1/4	.375	Solid	Solid	.375				
A 1M 2-TA32016	16	.5000	.563										
A 1M 2-TA32018	18	.5625	.625										
A 1M 2-TA32020	20	.6250	.688										
A 1M 2-TA32022	22	.6875	.750							.375	.480	.093	.375
A 1M 2-TA32024	24	.7500	.813								.543		
A 1M 2-TA32026	26	.8125	.875							.375	.605	.093	.375
A 1M 2-TA32028	28	.8750	.938								.668		
A 1M 2-TA32030	30	.9375	1.000	.730									
A 1M 2-TA32032	32	1.0000	1.063	.793									
A 1M 2-TA32036	36	1.1250	1.188	.437	.918	.093	.437						
A 1M 2-TA32040	40	1.2500	1.313		1.042								
A 1M 2-TA32044	44	1.3750	1.438		1.168			1.293	.093	.437			
A 1M 2-TA32048	48	1.5000	1.563										
A 1M 2-TA32052	52	1.6250	1.688										
A 1M 2-TA32056	56	1.7500	1.813		.437			1.543	.093	.437			
A 1M 2-TA32060	60	1.8750	1.938					1.668					
A 1M 2-TA32064	64	2.0000	2.063					1.793					

** BORE is for press fit on shaft size indicated.

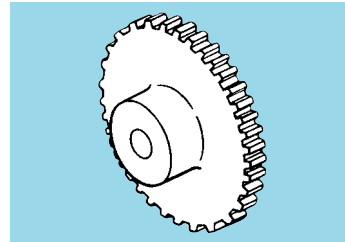
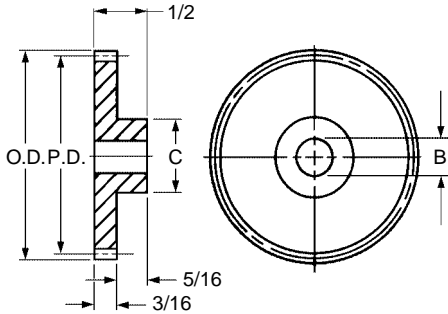
*Tooth profile and pressure angle of these gears are the same as metal gears that are manufactured by hobbing and shaping methods.



Molded Spur Gears - 32 Pitch

■ 20° PRESSURE ANGLE

■ 3/16 FACE




MATERIAL: Acetal

Catalog Number	No. of Teeth	P.D.	O.D.	B Bore	C Hub Dia.	Type
A 1M 2-Y32012	12	.375	.438	5/32	9/32	Plain
A 1M 2-Y32014	14	.438	.500		5/16	
A 1M 2-Y32015	15	.469	.531		5/16	
A 1M 2-Y32016	16	.500	.563	3/16	11/32	
A 1M 2-Y32018	18	.563	.625		15/32	
A 1M 2-Y32020	20	.625	.688		1/2	
A 1M 2-Y32022	22	.688	.750		1/2	
A 1M 2-Y32024	24	.750	.813		9/16	
A 1M 2-Y32026	26	.813	.875		1/2	
A 1M 2-Y32028	28	.875	.938	9/16	5/8	
A 1M 2-Y32030	30	.938	1.000			
A 1M 2-Y32032	32	1.000	1.063	1/4	39/64	
A 1M 2-Y32034	34	1.063	1.125			
A 1M 2-Y32036	36	1.125	1.188			
A 1M 2-Y32038	38	1.188	1.250			
A 1M 2-Y32040	40	1.250	1.313			
A 1M 2-Y32042	42	1.313	1.375			
A 1M 2-Y32044	44	1.375	1.438	5/8	39/64	
A 1M 2-Y32048	48	1.500	1.563			
A 1M 2-Y32052	52	1.625	1.688	5/16	43/64	
A 1M 2-Y32056	56	1.750	1.813			
A 1M 2-Y32064	64	2.000	2.063			
A 1M 2-Y32072	72	2.250	2.313			
A 1M 2-Y32080	80	2.500	2.563			
A 1M 2-Y32096	96	3.000	3.063			13/16

Discounts available on large quantity orders.

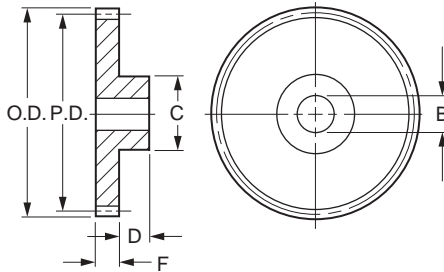
Inch Inch Inch Inch Inch Inch Inch Inch Inch Inch



Molded Spur Gears - 32 Pitch

Stock Drive Products/Sterling Instrument ■ Phone: 516-328-3300 ■ Fax: 516-326-8827

■ 14-1/2° PRESSURE ANGLE



MATERIAL: Nylon 101

Catalog Number	No. of Teeth	P.D.	O.D. Ref.	B Bore	F Face Width	C Hub Dia.	D Hub Proj.
A 1N 2-N32012	12	.375	.44			1/4	3/16
A 1N 2-N32014	14	.438	.50	1/8	3/16	5/16	1/4
A 1N 2-N32016	16	.500	.56			3/8	
A 1N 2-N32018	18	.563	.63	3/16	3/16	3/8	1/4
A 1N 2-N32020	20	.625	.69			1/2	
A 1N 2-N32022	22	.688	.75	1/4	3/16	9/16	1/4
A 1N 2-N32024	24	.750	.81				
A 1N 2-N32028	28	.875	.94	3/16	3/16	5/8	1/4
A 1N 2-N32032	32	1.000	1.06	1/4	3/16	5/8	1/4
A 1N 2-N32036	36	1.125	1.19				
A 1N 2-N32040	40	1.250	1.31				
A 1N 2-N32044	44	1.375	1.44	1/4	3/16	5/8	1/4
A 1N 2-N32048	48	1.500	1.56				
A 1N 2-N32052	52	1.625	1.69				
A 1N 2-N32062	62	1.938	2.00	3/8	1/4	5/8	3/8



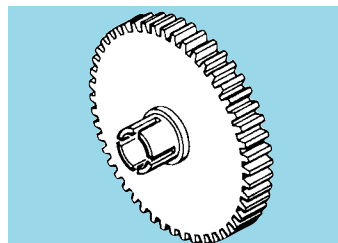
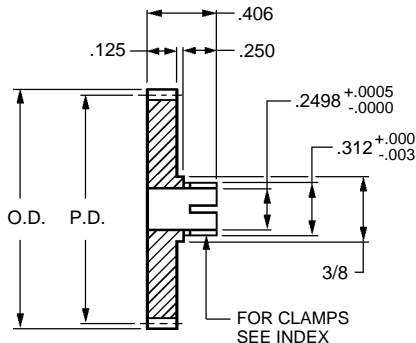
Clamp Type Spur Gears - 32 Pitch

■ AGMA Q10

■ 20° PRESSURE ANGLE

■ 1/8 FACE

■ 1/4 BORE



Catalog Number		No. of Teeth	P.D.	O.D.
303 Stainless Steel	2024 Aluminum * Anodized			
S1166Z-032S014	S1166Z-032A014	14	0.4375	0.500
S1166Z-032S018	S1166Z-032A018	18	0.5625	0.625
S1166Z-032S020	S1166Z-032A020	20	0.6250	0.688
S1166Z-032S024	S1166Z-032A024	24	0.7500	0.813
S1166Z-032S026	S1166Z-032A026	26	0.8125	0.875
S1166Z-032S028	S1166Z-032A028	28	0.8750	0.938
S1166Z-032S030	S1166Z-032A030	30	0.9375	1.000
S1166Z-032S032	S1166Z-032A032	32	1.0000	1.063
S1166Z-032S034	S1166Z-032A034	34	1.0625	1.125
S1166Z-032S036	S1166Z-032A036	36	1.1250	1.188
S1166Z-032S040	S1166Z-032A040	40	1.2500	1.313
S1166Z-032S042	S1166Z-032A042	42	1.3125	1.375
S1166Z-032S045	S1166Z-032A045	45	1.4063	1.469
S1166Z-032S048	S1166Z-032A048	48	1.5000	1.563
S1166Z-032S050	S1166Z-032A050	50	1.5625	1.625
S1166Z-032S056	S1166Z-032A056	56	1.7500	1.813
S1166Z-032S060	S1166Z-032A060	60	1.8750	1.938
S1166Z-032S064	S1166Z-032A064	64	2.0000	2.063
S1166Z-032S070	S1166Z-032A070	70	2.1875	2.250
S1166Z-032S072	S1166Z-032A072	72	2.2500	2.313
S1166Z-032S075	S1166Z-032A075	75	2.3438	2.406
S1166Z-032S076	S1166Z-032A076	76	2.3750	2.438
S1166Z-032S080	S1166Z-032A080	80	2.5000	2.563
S1166Z-032S088	S1166Z-032A088	88	2.7500	2.813
S1166Z-032S096	S1166Z-032A096	96	3.0000	3.063
S1166Z-032S112	S1166Z-032A112	112	3.5000	3.563
S1166Z-032S120	S1166Z-032A120	120	3.7500	3.813
S1166Z-032S127	S1166Z-032A127	127	3.9688	4.031
S1166Z-032S128	S1166Z-032A128	128	4.0000	4.063
S1166Z-032S132	S1166Z-032A132	132	4.1250	4.188

* T4 or T351 Aluminum Alloy, anodized before cutting.

Available on special order: 14-1/2° P.A., teeth not listed, different bore size and/or material, passivation for stainless steel.



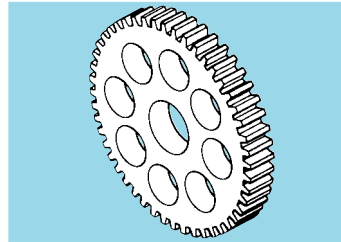
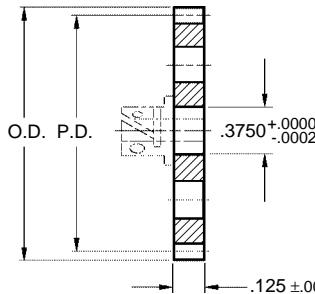
Hubless Spur Gears - 32 Pitch

■ AGMA Q10

■ 20° PRESSURE ANGLE

■ 1/8 FACE

■ 3/8 BORE



Hubs are available in Pin, Clamp, or Fairloc® type.



- All gears over 2-1/8" diameter supplied with lightening holes.
- See index for hubs. Assembled upon request at nominal charge.

Catalog Number		No. of Teeth	P.D.	O.D.
303 Stainless Steel	2024 Aluminum* Anodized			
S1268Z-032S019	S1268Z-032A019	19	0.5938	0.656
S1268Z-032S020	S1268Z-032A020	20	0.6250	0.688
S1268Z-032S024	S1268Z-032A024	24	0.7500	0.813
S1268Z-032S026	S1268Z-032A026	26	0.8125	0.875
S1268Z-032S028	S1268Z-032A028	28	0.8750	0.938
S1268Z-032S030	S1268Z-032A030	30	0.9375	1.000
S1268Z-032S032	S1268Z-032A032	32	1.0000	1.063
S1268Z-032S036	S1268Z-032A036	36	1.1250	1.188
S1268Z-032S040	S1268Z-032A040	40	1.2500	1.313
S1268Z-032S042	S1268Z-032A042	42	1.3125	1.375
S1268Z-032S044	S1268Z-032A044	44	1.3750	1.438
S1268Z-032S048	S1268Z-032A048	48	1.5000	1.563
S1268Z-032S050	S1268Z-032A050	50	1.5625	1.625
S1268Z-032S052	S1268Z-032A052	52	1.6250	1.688
S1268Z-032S054	S1268Z-032A054	54	1.6875	1.750
S1268Z-032S056	S1268Z-032A056	56	1.7500	1.813
S1268Z-032S060	S1268Z-032A060	60	1.8750	1.938
S1268Z-032S064	S1268Z-032A064	64	2.0000	2.063
S1268Z-032S066	S1268Z-032A066	66	2.0625	2.125
S1268Z-032S070	S1268Z-032A070	70	2.1875	2.250
S1268Z-032S072	S1268Z-032A072	72	2.2500	2.313
S1268Z-032S080	S1268Z-032A080	80	2.5000	2.563
S1268Z-032S084	S1268Z-032A084	84	2.6250	2.688
S1268Z-032S086	S1268Z-032A086	86	2.6875	2.750
S1268Z-032S088	S1268Z-032A088	88	2.7500	2.813
S1268Z-032S092	S1268Z-032A092	92	2.8750	2.938
S1268Z-032S096	S1268Z-032A096	96	3.0000	3.063
S1268Z-032S120	S1268Z-032A120	120	3.7500	3.813
S1268Z-032S128	S1268Z-032A128	128	4.0000	4.063
S1268Z-032S132	S1268Z-032A132	132	4.1250	4.188

*T4 or T351 Aluminum Alloy, anodized before cutting.

Available on special order: 14-1/2° P.A., teeth not listed, different bore size and/or material, passivation for stainless steel.

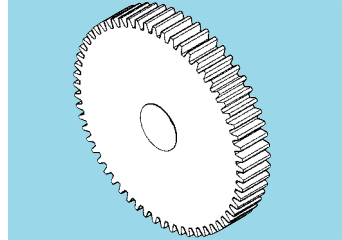
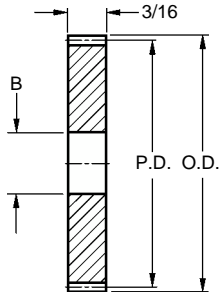


INCH

Hubless Spur Gears - 32 Pitch

■ 20° PRESSURE ANGLE

■ 3/16 FACE WIDTH



MATERIAL: Steel

Catalog Number	No. of Teeth	P.D.	O.D.	B Bore
A 1C 1-Y32020A	20	.625	.688	1/4
A 1C 1-Y32024	24	.750	.813	
A 1C 1-Y32036A	36	1.125	1.188	5/16
A 1C 1-Y32036				3/8
A 1C 1-Y32040	40	1.250	1.313	5/16
A 1C 1-Y32052	52	1.625	1.688	3/8
A 1C 1-Y32056	56	1.750	1.813	5/16
A 1C 1-Y32056A				3/8
A 1C 1-Y32064	64	2.000	2.063	3/8
A 1C 1-Y32072	72	2.250	2.313	
A 1C 1-Y32080	80	2.500	2.563	
A 1C 1-Y32088	88	2.750	2.813	

For large quantity orders, discounts available.

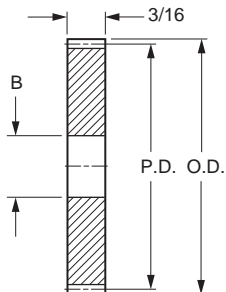


Hubless Spur Gears - 32 Pitch

Stock Drive Products/Sterling Instrument ■ Phone: 516-328-3300 ■ Fax: 516-326-8827

■ 14-1/2° PRESSURE ANGLE

■ 3/16 FACE WIDTH



MATERIAL: Steel

Catalog Number	No. of Teeth	P.D.	O.D.	B Bore
A 1C 1-N32016	16	.500	.563	3/16
A 1C 1-N32018	18	.563	.625	
A 1C 1-N32020	20	.625	.688	
A 1C 1-N32022	22	.688	.750	
A 1C 1-N32024	24	.750	.813	1/4
A 1C 1-N32024A	24	.750	.813	5/16
A 1C 1-N32026	26	.813	.875	1/4
A 1C 1-N32028	28	.875	.937	3/8
A 1C 1-N32030	30	.937	1.000	5/16
A 1C 1-N32030A	30	.937	1.000	3/8
A 1C 1-N32032	32	1.000	1.063	3/8
A 1C 1-N32036	36	1.125	1.188	5/16
A 1C 1-N32036A	36	1.125	1.188	3/8
A 1C 1-N32040	40	1.250	1.313	5/16
A 1C 1-N32044	44	1.375	1.438	5/16
A 1C 1-N32044A	44	1.375	1.438	3/8
A 1C 1-N32048	48	1.500	1.563	5/16
A 1C 1-N32052	52	1.625	1.688	3/8
A 1C 1-N32056	56	1.750	1.813	5/16
A 1C 1-N32056A	56	1.750	1.813	3/8
A 1C 1-N32060	60	1.875	1.938	
A 1C 1-N32064	64	2.000	2.063	
A 1C 1-N32072	72	2.250	2.313	
A 1C 1-N32080	80	2.500	2.563	3/8
A 1C 1-N32096	96	3.000	3.063	

Modifications of standard parts performed at nominal charge.

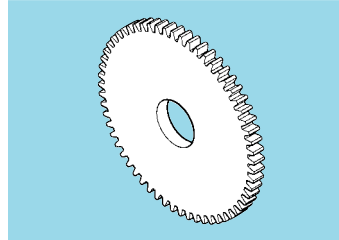
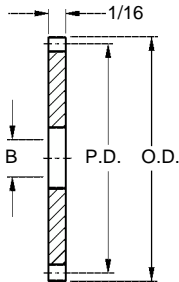


INCH

Hubless Spur Gears - 32 Pitch

■ 14-1/2° PRESSURE ANGLE

■ 1/16 FACE WIDTH



MATERIAL: Brass

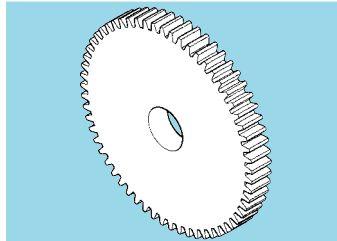
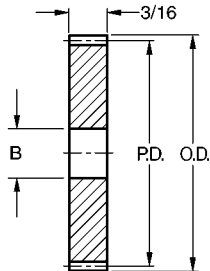
Catalog Number	No. of Teeth	P.D.	O.D.	B Bore
A 1B 1-N32006	6	.188	.250	1/16
A 1B 1-N32008	8	.250	.313	1/8
A 1B 1-N32009	9	.281	.344	
A 1B 1-N32010	10	.313	.375	
A 1B 1-N32011	11	.344	.406	
A 1B 1-N32012	12	.375	.438	
A 1B 1-N32014	14	.438	.500	3/16
A 1B 1-N32015	15	.469	.531	
A 1B 1-N32016	16	.500	.563	
A 1B 1-N32018	18	.563	.625	
A 1B 1-N32020	20	.625	.688	
A 1B 1-N32024	24	.750	.813	1/4
A 1B 1-N32028	28	.875	.938	
A 1B 1-N32032	32	.938	1.063	
A 1B 1-N32040	40	1.250	1.313	5/16
A 1B 1-N32048	48	1.500	1.563	
A 1B 1-N32050	50	1.563	1.625	
A 1B 1-N32060	60	1.875	1.938	
A 1B 1-N32064	64	2.000	2.063	
A 1B 1-N32070	70	2.188	2.250	3/8
A 1B 1-N32075	75	2.344	2.406	
A 1B 1-N32080	80	2.500	2.563	
A 1B 1-N32090	90	2.813	2.875	
A 1B 1-N32096	96	3.000	3.063	
A 1B 1-N32100	100	3.125	3.188	3/8
A 1B 1-N32112	112	3.500	3.563	
A 1B 1-N32120	120	3.750	3.813	
A 1B 1-N32128	128	4.000	4.063	
A 1B 1-N32144	144	4.500	4.563	

Sizes not shown in this catalog are available on special order.

**INCH****Hubless Spur Gears - 32 Pitch**

■ 14-1/2° PRESSURE ANGLE

■ 3/16 FACE WIDTH



MATERIAL: Brass

Catalog Number	No. of Teeth	P.D.	O.D.	B Bore
A 1B11-N32006	6	.188	.250	1/16
* A 1B11-N32007	7	.219	.281	3/32
A 1B11-N32008	8	.250	.313	1/8
A 1B11-N32009	9	.281	.344	
A 1B11-N32010	10	.313	.375	
A 1B11-N32011	11	.344	.406	
A 1B11-N32012	12	.375	.438	
* A 1B11-N32013	13	.406	.469	3/16
A 1B11-N32014	14	.438	.500	
A 1B11-N32015	15	.469	.531	
A 1B11-N32016	16	.500	.563	
A 1B11-N32018	18	.563	.625	
A 1B11-N32020	20	.625	.688	1/4
A 1B11-N32022	22	.688	.750	
A 1B11-N32024	24	.750	.813	
A 1B11-N32026	26	.813	.875	
A 1B11-N32028	28	.875	.938	
A 1B11-N32030	30	.938	1.000	5/16
A 1B11-N32032	32	1.000	1.063	
A 1B11-N32036	36	1.125	1.188	
A 1B11-N32040	40	1.250	1.313	
A 1B11-N32044	44	1.375	1.438	
A 1B11-N32048	48	1.500	1.563	5/16
A 1B11-N32056	56	1.750	1.813	

* To be discontinued when present stock is depleted.

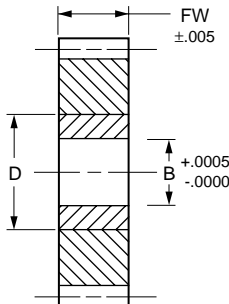
Other bore sizes available on special order.



Hubless Composite Spur Gears - 32 Pitch

- AGMA Q9
- 20° PRESSURE ANGLE
- 1/4 & 3/8 FACES
- 3/8 & 1/2 BORES

INTECH Power-Core™

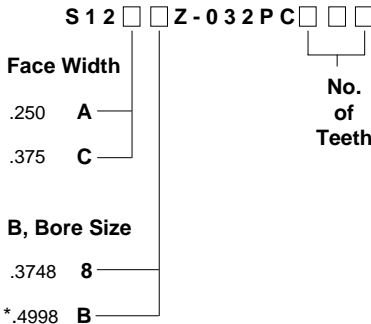


FEATURES:

- Self-lubricating
- Quiet operation
- Precision hobbed & machined
- Integral metal core
- Dimensionally stable against moisture
- High torque transmission
- Lightweight
- Shock-absorbent
- Noncorrodible

MATERIAL: Gear- Cast Nylon 12 (PA12G)
Knurled Core - 303 Stainless Steel

CATALOG NUMBER DESIGNATION:



* Only available with 48 to 128 teeth

No. of Teeth	P.D.	O.D.	D Core Dia.
28	.8750	.938	.630
30	.9375	1.000	.630
32	1.0000	1.063	.630
36	1.1250	1.188	.787
40	1.2500	1.313	.787
48	1.5000	1.563	.787
56	1.7500	1.813	.984
60	1.8750	1.938	.984
64	2.0000	2.063	1.181
72	2.2500	2.313	1.181
80	2.5000	2.563	1.378
96	3.0000	3.063	1.575
112	3.5000	3.563	1.575
128	4.0000	4.063	1.969

Example:

S12ABZ-032PC072 is a .250 Face, .4998 Bore, 32 Pitch Hubless Spur Gear with 72 Teeth.

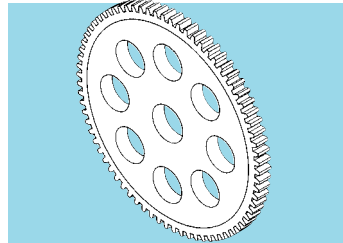
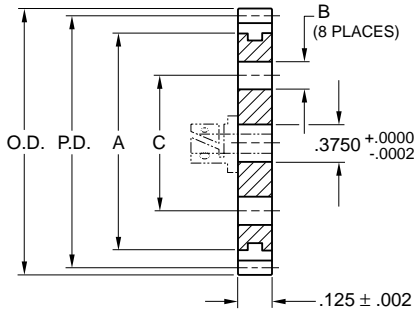
NOTE: Other face widths, number of teeth, bore diameters and carbon steel core available on special order.

See pages 1-6 thru 1-8 for technical data on Power-Core™ material.



Aluminum-Acetal Gears - 32 Pitch

- AGMA Q10
- 20° PRESSURE ANGLE
- 1/8 FACE
- 3/8 BORE



MATERIAL: Core – Aluminum 2024-T3, Chemical Filmed
Rim – Acetal

Catalog Number	No. of Teeth	P.D.	O.D.	A Dia.	B Dia.	C Dia.
S1268Z-032M028	28	0.8750	0.938	5/8	—	—
S1268Z-032M032	32	1.0000	1.063			
S1268Z-032M035	35	1.0938	1.156	7/8		
S1268Z-032M036	36	1.1250	1.188			
S1268Z-032M040	40	1.2500	1.313			
S1268Z-032M042	42	1.3125	1.375	1-1/8		
S1268Z-032M045	45	1.4063	1.469			
S1268Z-032M048	48	1.5000	1.563			
S1268Z-032M050	50	1.5625	1.625	1-3/8		
S1268Z-032M055	55	1.7188	1.781			
S1268Z-032M060	60	1.8750	1.938	1-5/8	7/32	13/16
S1268Z-032M064	64	2.0000	2.063			
S1268Z-032M065	65	2.0313	2.094			
S1268Z-032M070	70	2.1875	2.250	1-7/8	5/16	1-3/32
S1268Z-032M072	72	2.2500	2.313			
S1268Z-032M075	75	2.3438	2.406	2-1/8	3/8	1-3/8
S1268Z-032M080	80	2.5000	2.563	2-1/8		
S1268Z-032M085	85	2.6563	2.719	2-3/8		
S1268Z-032M090	90	2.8125	2.875	2-5/8		1-3/4
S1268Z-032M096	96	3.0000	3.063	2-5/8		
S1268Z-032M112	112	3.5000	3.563	3-1/8		
S1268Z-032M128	128	4.0000	4.063	3-5/8		

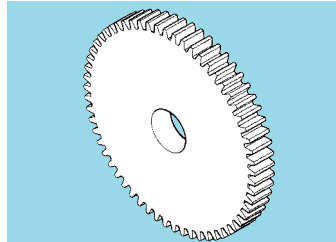
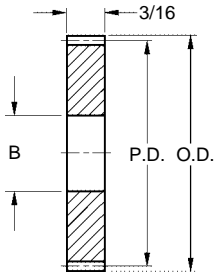
See Index for hubs. Assembled upon request at a nominal charge.

Available on special order: 14-1/2° P.A., teeth not listed, different bore and/or materials.

**INCH****Molded Hubless Spur Gears - 32 Pitch**

■ 14-1/2° PRESSURE ANGLE

■ 3/16 FACE WIDTH

**MATERIAL:** Nylon 101

Catalog Number	No. of Teeth	P.D.	O.D. Ref.	B Bore
A 1N 1-N32012	12	.375	.44	1/8
A 1N 1-N32014	14	.438	.50	
A 1N 1-N32016	16	.500	.56	3/16
A 1N 1-N32018	18	.563	.63	
A 1N 1-N32020	20	.625	.69	
A 1N 1-N32024	24	.750	.81	
A 1N 1-N32028	28	.875	.94	1/4
A 1N 1-N32032	32	1.000	1.06	
A 1N 1-N32036	36	1.125	1.19	
A 1N 1-N32038	38	1.188	1.25	
A 1N 1-N32040	40	1.250	1.31	
A 1N 1-N32044	44	1.375	1.44	
A 1N 1-N32048	48	1.500	1.56	1/4
A 1N 1-N32052	52	1.625	1.69	
A 1N 1-N32056	56	1.750	1.81	
A 1N 1-N32062	62	1.938	2.00	

Other bore sizes available on special order.



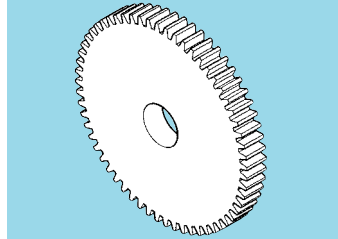
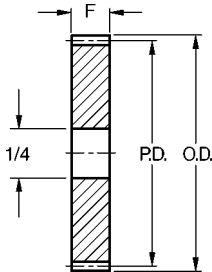
INCH

Nonmetallic Hubless Spur Gears - 32 Pitch

■ 14-1/2° PRESSURE ANGLE

■ MACHINED

■ 1/4 BORE



MATERIAL: Bakelite
250°F - Maximum Temperature

Catalog Number	No. of Teeth	P.D.	O.D.	F Face Width
A 1P 1-N32016	16	.500	.563	5/16
A 1P 1-N32064	64	2.000	2.063	
A 1P 1-N32072	72	2.250	2.313	3/16
A 1P 1-N32112	112	3.500	3.563	

NOTE: To be discontinued when present stock is depleted.

Did You Know?

... That pricing for any component in this catalog is available through the Sales Department? Simply call, fax or write in your request for a quote for any component that you think you might want to use in your design.

CALL: 516-328-3300 or FAX: 516-326-8827