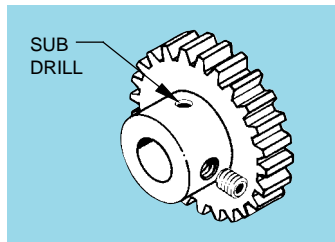
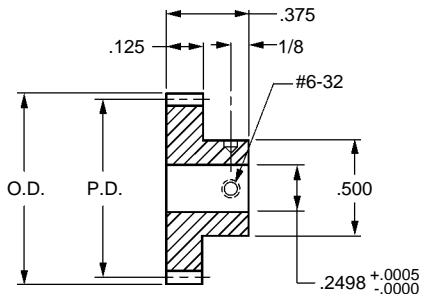


■ AGMA Q10

■ 20° PRESSURE ANGLE

■ 1/8 FACE

■ 1/4 BORE

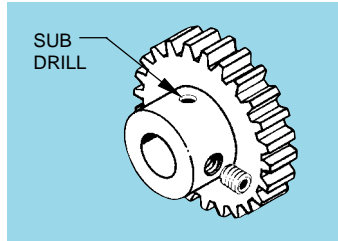
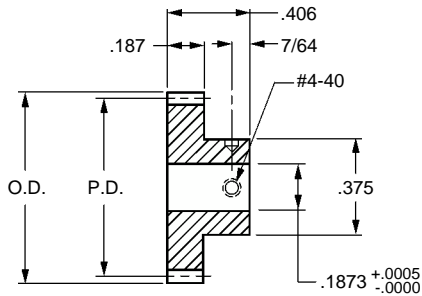


Catalog Number		No. of Teeth	P.D.	O.D.
303 Stainless Steel	2024 Aluminum * Anodized			
S1066Z-024S012	S1066Z-024A012	12	0.5000	0.583
S1066Z-024S015	S1066Z-024A015	15	0.6250	0.708
S1066Z-024S016	S1066Z-024A016	16	0.6667	0.750
S1066Z-024S018	S1066Z-024A018	18	0.7500	0.833
S1066Z-024S020	S1066Z-024A020	20	0.8333	0.917
S1066Z-024S021	S1066Z-024A021	21	0.8750	0.958
S1066Z-024S022	S1066Z-024A022	22	0.9167	1.000
S1066Z-024S024	S1066Z-024A024	24	1.0000	1.083
S1066Z-024S027	S1066Z-024A027	27	1.1250	1.208
S1066Z-024S030	S1066Z-024A030	30	1.2500	1.333
S1066Z-024S033	S1066Z-024A033	33	1.3750	1.458
S1066Z-024S036	S1066Z-024A036	36	1.5000	1.583
S1066Z-024S039	S1066Z-024A039	39	1.6250	1.708
S1066Z-024S042	S1066Z-024A042	42	1.7500	1.833
S1066Z-024S045	S1066Z-024A045	45	1.8750	1.958
S1066Z-024S048	S1066Z-024A048	48	2.0000	2.083
S1066Z-024S054	S1066Z-024A054	54	2.2500	2.333
S1066Z-024S060	S1066Z-024A060	60	2.5000	2.583
S1066Z-024S066	S1066Z-024A066	66	2.7500	2.833
S1066Z-024S069	S1066Z-024A069	69	2.8750	2.958
S1066Z-024S072	S1066Z-024A072	72	3.0000	3.083
S1066Z-024S075	S1066Z-024A075	75	3.1250	3.208
S1066Z-024S078	S1066Z-024A078	78	3.2500	3.333
S1066Z-024S081	S1066Z-024A081	81	3.3750	3.458
S1066Z-024S084	S1066Z-024A084	84	3.5000	3.583
S1066Z-024S087	S1066Z-024A087	87	3.6250	3.708
S1066Z-024S090	S1066Z-024A090	90	3.7500	3.833
S1066Z-024S093	S1066Z-024A093	93	3.8750	3.958
S1066Z-024S096	S1066Z-024A096	96	4.0000	4.083
S1066Z-024S099	S1066Z-024A099	99	4.1250	4.208

* T4 or T351 Aluminum Alloy, anodized before cutting.

Available on special order: 14-1/2° P.A., teeth not listed, different bore size and/or material, passivation for stainless steel.

- AGMA Q10
- 20° PRESSURE ANGLE
- 3/16 FACE
- 3/16 BORE




Catalog Number		No. of Teeth	P.D.	O.D.
303 Stainless Steel	2024 Aluminum * Anodized			
S1084Z-024S010	S1084Z-024A010	10	0.4167	0.500
S1084Z-024S012	S1084Z-024A012	12	0.5000	0.583
S1084Z-024S014	S1084Z-024A014	14	0.5833	0.667
S1084Z-024S015	S1084Z-024A015	15	0.6250	0.708
S1084Z-024S016	S1084Z-024A016	16	0.6667	0.750
S1084Z-024S018	S1084Z-024A018	18	0.7500	0.833
S1084Z-024S020	S1084Z-024A020	20	0.8333	0.917
S1084Z-024S021	S1084Z-024A021	21	0.8750	0.958
S1084Z-024S022	S1084Z-024A022	22	0.9167	1.000
S1084Z-024S024	S1084Z-024A024	24	1.0000	1.083
S1084Z-024S028	S1084Z-024A028	28	1.1667	1.250
S1084Z-024S030	S1084Z-024A030	30	1.2500	1.333
S1084Z-024S032	S1084Z-024A032	32	1.3333	1.417
S1084Z-024S036	S1084Z-024A036	36	1.5000	1.583
S1084Z-024S042	S1084Z-024A042	42	1.7500	1.833
S1084Z-024S044	S1084Z-024A044	44	1.8333	1.917
S1084Z-024S048	S1084Z-024A048	48	2.0000	2.083
S1084Z-024S050	S1084Z-024A050	50	2.0833	2.167
S1084Z-024S054	S1084Z-024A054	54	2.2500	2.333
S1084Z-024S056	S1084Z-024A056	56	2.3333	2.417
S1084Z-024S060	S1084Z-024A060	60	2.5000	2.583
S1084Z-024S064	S1084Z-024A064	64	2.6667	2.750
S1084Z-024S068	S1084Z-024A068	68	2.8333	2.917
S1084Z-024S072	S1084Z-024A072	72	3.0000	3.083
S1084Z-024S078	S1084Z-024A078	78	3.2500	3.333
S1084Z-024S080	S1084Z-024A080	80	3.3333	3.417
S1084Z-024S084	S1084Z-024A084	84	3.5000	3.583
S1084Z-024S090	S1084Z-024A090	90	3.7500	3.833
S1084Z-024S096	S1084Z-024A096	96	4.0000	4.083
S1084Z-024S098	S1084Z-024A098	98	4.0833	4.167

* T4 or T351 Aluminum Alloy, anodized before cutting.

Available on special order: 14-1/2° P.A., teeth not listed, different bore size and/or material, passivation for stainless steel.

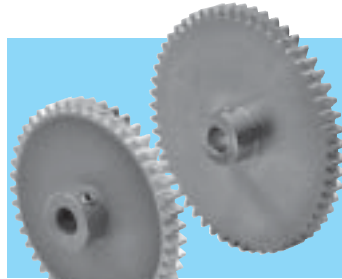
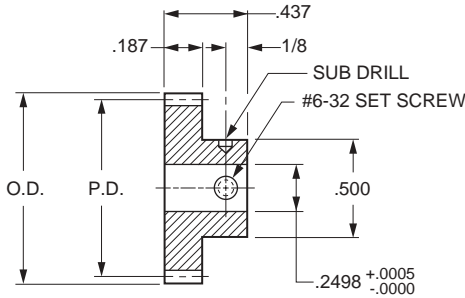
Inch Inch Inch Inch Inch Inch Inch Inch Inch Inch



Spur Gears - 24 Pitch

Stock Drive Products/Sterling Instrument ■ Phone: 516-328-3300 ■ Fax: 516-326-8827

- AGMA Q10
■ 20° PRESSURE ANGLE
■ 3/16 FACE
■ 1/4 BORE



Catalog Number		No. of Teeth	P.D.	O.D.
303 Stainless Steel	2024 Aluminum * Anodized			
S1086Z-024S012	S1086Z-024A012	12 ^Δ	.5000	.583
S1086Z-024S015	S1086Z-024A015	15	.6250	.708
S1086Z-024S016	S1086Z-024A016	16	.6667	.750
S1086Z-024S018	S1086Z-024A018	18	.7500	.833
S1086Z-024S020	S1086Z-024A020	20	.8333	.917
S1086Z-024S021	S1086Z-024A021	21	.8750	.958
S1086Z-024S022	S1086Z-024A022	22	.9167	1.000
S1086Z-024S024	S1086Z-024A024	24	1.0000	1.083
S1086Z-024S027	S1086Z-024A027	27	1.1250	1.208
S1086Z-024S030	S1086Z-024A030	30	1.2500	1.333
S1086Z-024S033	S1086Z-024A033	33	1.3750	1.458
S1086Z-024S036	S1086Z-024A036	36	1.5000	1.583
S1086Z-024S039	S1086Z-024A039	39	1.6250	1.708
S1086Z-024S042	S1086Z-024A042	42	1.7500	1.833
S1086Z-024S045	S1086Z-024A045	45	1.8750	1.958
S1086Z-024S048	S1086Z-024A048	48	2.0000	2.083
S1086Z-024S051	S1086Z-024A051	51	2.1250	2.208
S1086Z-024S054	S1086Z-024A054	54	2.2500	2.333
S1086Z-024S060	S1086Z-024A060	60	2.5000	2.583
S1086Z-024S066	S1086Z-024A066	66	2.7500	2.833
S1086Z-024S069	S1086Z-024A069	69	2.8750	2.958
S1086Z-024S072	S1086Z-024A072	72	3.0000	3.083
S1086Z-024S075	S1086Z-024A075	75	3.1250	3.208
S1086Z-024S078	S1086Z-024A078	78	3.2500	3.333
S1086Z-024S081	S1086Z-024A081	81	3.3750	3.458
S1086Z-024S084	S1086Z-024A084	84	3.5000	3.583
S1086Z-024S087	S1086Z-024A087	87	3.6250	3.708
S1086Z-024S090	S1086Z-024A090	90	3.7500	3.833
S1086Z-024S093	S1086Z-024A093	93	3.8750	3.958
S1086Z-024S096	S1086Z-024A096	96	4.0000	4.083
S1086Z-024S099	S1086Z-024A099	99	4.1250	4.208

* T4 or T351 Aluminum Alloy, anodized before cutting.

^ΔHob cuts into hub. Hub diameter never exceeds gear O.D.

Available on special order: 14-1/2° P.A., teeth not listed, different bore size and/or material, passivation for Stainless Steel.

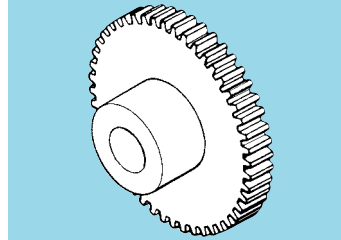
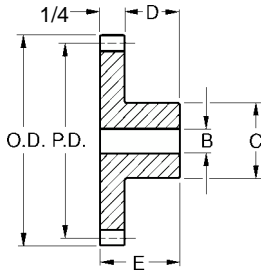


INCH

Spur Gears - 24 Pitch

■ 14-1/2° PRESSURE ANGLE

■ 1/4 FACE WIDTH



MATERIAL: Brass

Catalog Number	No. of Teeth	P.D.	O.D.	B Bore	E Length	C Hub Dia.	D Hub Proj.
A 1B 2-N24011	11	.458	.542	1/8	1/2	11/32	1/4
A 1B 2-N24012	12	.500	.583	3/16	1/2	3/8	1/4
A 1B 2-N24014	14	.583	.667		1/2	1/2	1/4
A 1B 2-N24016	16	.667	.750	1/4	1/2	1/2	1/4
A 1B 2-N24018	18	.750	.833		1/2	1/2	1/4
A 1B 2-N24020	20	.833	.917	1/4	1/2	5/8	1/4
A 1B 2-N24021	21	.875	.958		1/2	5/8	1/4
A 1B 2-N24024	24	1.000	1.083	1/4	1/2	5/8	1/4
A 1B 2-N24027	27	1.125	1.208		1/2	5/8	1/4
A 1B 2-N24028	28	1.167	1.250	1/4	1/2	5/8	1/4
A 1B 2-N24030	30	1.250	1.333		1/2	5/8	1/4
A 1B 2-N24032	32	1.333	1.417	1/4	1/2	5/8	1/4
A 1B 2-N24036	36	1.500	1.583		1/2	5/8	1/4
A 1B 2-N24040	40	1.667	1.750	1/4	1/2	5/8	1/4
A 1B 2-N24042	42	1.750	1.833		1/2	5/8	1/4
A 1B 2-N24042A	42	1.750	1.833	5/16	1/2	11/16	1/4
A 1B 2-N24044	44	1.833	1.917		1/2	5/8	1/4
A 1B 2-N24048	48	2.000	2.083	5/16	9/16	11/16	5/16
A 1B 2-N24052	52	2.167	2.250		9/16	11/16	5/16
A 1B 2-N24054	54	2.250	2.333	3/8	9/16	3/4	5/16
A 1B 2-N24056	56	2.333	2.417		9/16	11/16	5/16
A 1B 2-N24060	60	2.500	2.583	3/8	9/16	3/4	5/16
A 1B 2-N24066	66	2.750	2.833		9/16	3/4	5/16
A 1B 2-N24072	72	3.000	3.083	5/16	9/16	3/4	5/16
A 1B 2-N24080	80	3.333	3.417	5/16	9/16	3/4	5/16
A 1B 2-N24084	84	3.500	3.583	3/8	9/16	3/4	5/16
A 1B 2-N24096A	96	4.000	4.083		9/16	3/4	5/16
A 1B 2-N24108A	108	4.500	4.583	5/16	5/8	7/8	3/8
A 1B 2-N24120A	120	5.000	5.083		5/8	7/8	3/8
A 1B 2-N24128	128	5.333	5.417	3/8	5/8	7/8	3/8
A 1B 2-N24144A	144	6.000	6.083	3/8	5/8	7/8	3/8
A 1B 2-N24156	156	6.500	6.583	5/16	9/16	1-1/8	5/16
A 1B 2-N24168	168	7.000	7.083	1/2	3/4	1-1/8	1/2

NOTE: Gears may be solid, webbed or spoked depending on the size.



Fairloc® Hub Acetal Spur Gears - 24 Pitch

- AGMA Q10
- 20° PRESSURE ANGLE
- 3/16 FACE
- 3/16, 1/4 & 3/8 BORES

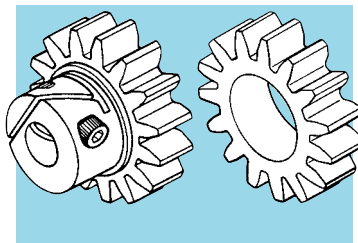
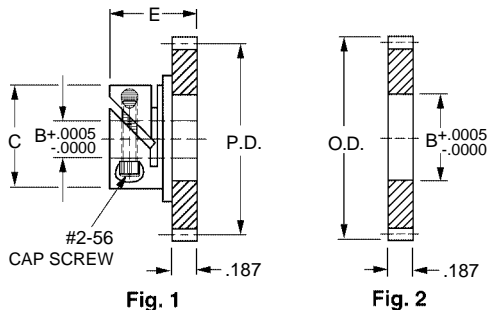


Fig. 1	Bore Ref.	C	E
	.1873	.438	.453
	.2498	.530	.483

MATERIAL: Gear – Acetal
Hub – 303 Stainless Steel

Catalog Number			No. of Teeth	P.D.	O.D.
FAIRLOC® TYPE HUB GEAR (Fig. 1)		HUBLESS (Fig. 2)			
B = ø.1873	B = ø.2498	B = ø.3750			
S1V84Z-024DS015	S1V86Z-024DS015	S1288Z-024D015	15	.6250	.708
S1V84Z-024DS016	S1V86Z-024DS016	S1288Z-024D016	16	.6667	.750
S1V84Z-024DS017	S1V86Z-024DS017	S1288Z-024D017	17	.7083	.792
S1V84Z-024DS018	S1V86Z-024DS018	S1288Z-024D018	18	.7500	.833
S1V84Z-024DS019	S1V86Z-024DS019	S1288Z-024D019	19	.7917	.875
S1V84Z-024DS020	S1V86Z-024DS020	S1288Z-024D020	20	.8333	.917
S1V84Z-024DS021	S1V86Z-024DS021	S1288Z-024D021	21	.8750	.958
S1V84Z-024DS022	S1V86Z-024DS022	S1288Z-024D022	22	.9167	1.000
S1V84Z-024DS023	S1V86Z-024DS023	S1288Z-024D023	23	.9583	1.042
S1V84Z-024DS024	S1V86Z-024DS024	S1288Z-024D024	24	1.0000	1.083
S1V84Z-024DS025	S1V86Z-024DS025	S1288Z-024D025	25	1.0417	1.125
S1V84Z-024DS028	S1V86Z-024DS028	S1288Z-024D028	28	1.1667	1.250
S1V84Z-024DS030	S1V86Z-024DS030	S1288Z-024D030	30	1.2500	1.333
S1V84Z-024DS032	S1V86Z-024DS032	S1288Z-024D032	32	1.3333	1.417
S1V84Z-024DS033	S1V86Z-024DS033	S1288Z-024D033	33	1.3750	1.458
S1V84Z-024DS036	S1V86Z-024DS036	S1288Z-024D036	36	1.5000	1.583
S1V84Z-024DS040	S1V86Z-024DS040	S1288Z-024D040	40	1.6667	1.750
S1V84Z-024DS042	S1V86Z-024DS042	S1288Z-024D042	42	1.7500	1.833
S1V84Z-024DS045	S1V86Z-024DS045	S1288Z-024D045	45	1.8750	1.958
S1V84Z-024DS046	S1V86Z-024DS046	S1288Z-024D046	46	1.9167	2.000
S1V84Z-024DS048	S1V86Z-024DS048	S1288Z-024D048	48	2.0000	2.083
S1V84Z-024DS050	S1V86Z-024DS050	S1288Z-024D050	50	2.0833	2.167
S1V84Z-024DS052	S1V86Z-024DS052	S1288Z-024D052	52	2.1667	2.250
S1V84Z-024DS055	S1V86Z-024DS055	S1288Z-024D055	55	2.2917	2.375
S1V84Z-024DS056	S1V86Z-024DS056	S1288Z-024D056	56	2.3333	2.417
S1V84Z-024DS057	S1V86Z-024DS057	S1288Z-024D057	57	2.3750	2.458
S1V84Z-024DS060	S1V86Z-024DS060	S1288Z-024D060	60	2.5000	2.583
S1V84Z-024DS064	S1V86Z-024DS064	S1288Z-024D064	64	2.6667	2.750
S1V84Z-024DS066	S1V86Z-024DS066	S1288Z-024D066	66	2.7500	2.833
S1V84Z-024DS069	S1V86Z-024DS069	S1288Z-024D069	69	2.8750	2.958
S1V84Z-024DS072	S1V86Z-024DS072	S1288Z-024D072	72	3.0000	3.083
S1V84Z-024DS078	S1V86Z-024DS078	S1288Z-024D078	78	3.2500	3.333
S1V84Z-024DS084	S1V86Z-024DS084	S1288Z-024D084	84	3.5000	3.583
S1V84Z-024DS090	S1V86Z-024DS090	S1288Z-024D090	90	3.7500	3.833
S1V84Z-024DS093	S1V86Z-024DS093	S1288Z-024D093	93	3.8750	3.958

Available on special order: 14-1/2° P.A., teeth not listed or different bore size.
This product is also available with pin type hubs. See page 1-128.

- AGMA Q10
- 20° PRESSURE ANGLE
- 3/16 FACE
- 3/16, 1/4 & 3/8 BORES

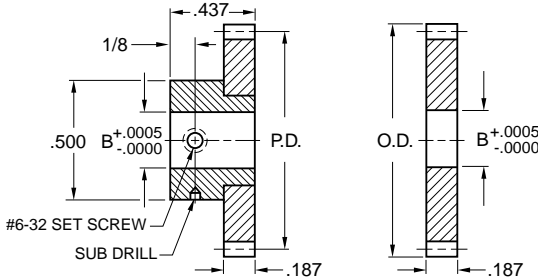
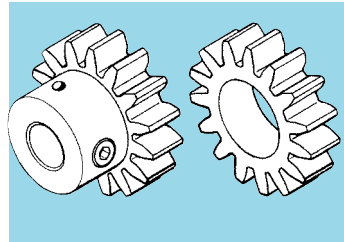


Fig. 1

Fig. 2



MATERIAL: Gear – Acetal
Hub – 303 Stainless Steel



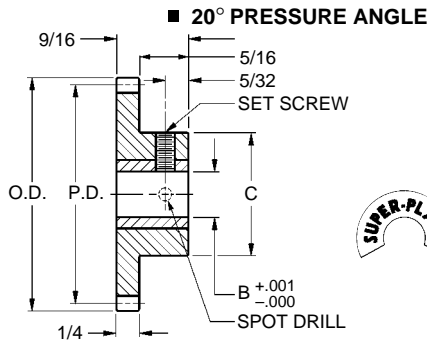
Catalog Number			No. of Teeth	P.D.	O.D.
PIN TYPE HUB GEAR (Fig. 1)		HUBLESS (Fig. 2)			
B = ø.1873	B = ø.2498	B = ø.3750			
S1084Z-024DS015	S1086Z-024DS015	S1288Z-024D015	15	.6250	.708
S1084Z-024DS016	S1086Z-024DS016	S1288Z-024D016	16	.6667	.750
S1084Z-024DS017	S1086Z-024DS017	S1288Z-024D017	17	.7083	.792
S1084Z-024DS018	S1086Z-024DS018	S1288Z-024D018	18	.7500	.833
S1084Z-024DS019	S1086Z-024DS019	S1288Z-024D019	19	.7917	.875
S1084Z-024DS020	S1086Z-024DS020	S1288Z-024D020	20	.8333	.917
S1084Z-024DS021	S1086Z-024DS021	S1288Z-024D021	21	.8750	.958
S1084Z-024DS022	S1086Z-024DS022	S1288Z-024D022	22	.9167	1.000
S1084Z-024DS023	S1086Z-024DS023	S1288Z-024D023	23	.9583	1.042
S1084Z-024DS024	S1086Z-024DS024	S1288Z-024D024	24	1.0000	1.083
S1084Z-024DS025	S1086Z-024DS025	S1288Z-024D025	25	1.0417	1.125
S1084Z-024DS028	S1086Z-024DS028	S1288Z-024D028	28	1.1667	1.250
S1084Z-024DS030	S1086Z-024DS030	S1288Z-024D030	30	1.2500	1.333
S1084Z-024DS032	S1086Z-024DS032	S1288Z-024D032	32	1.3333	1.417
S1084Z-024DS033	S1086Z-024DS033	S1288Z-024D033	33	1.3750	1.458
S1084Z-024DS036	S1086Z-024DS036	S1288Z-024D036	36	1.5000	1.583
S1084Z-024DS040	S1086Z-024DS040	S1288Z-024D040	40	1.6667	1.750
S1084Z-024DS042	S1086Z-024DS042	S1288Z-024D042	42	1.7500	1.833
S1084Z-024DS045	S1086Z-024DS045	S1288Z-024D045	45	1.8750	1.958
S1084Z-024DS046	S1086Z-024DS046	S1288Z-024D046	46	1.9167	2.000
S1084Z-024DS048	S1086Z-024DS048	S1288Z-024D048	48	2.0000	2.083
S1084Z-024DS050	S1086Z-024DS050	S1288Z-024D050	50	2.0833	2.167
S1084Z-024DS052	S1086Z-024DS052	S1288Z-024D052	52	2.1667	2.250
S1084Z-024DS055	S1086Z-024DS055	S1288Z-024D055	55	2.2917	2.375
S1084Z-024DS056	S1086Z-024DS056	S1288Z-024D056	56	2.3333	2.417
S1084Z-024DS057	S1086Z-024DS057	S1288Z-024D057	57	2.3750	2.458
S1084Z-024DS060	S1086Z-024DS060	S1288Z-024D060	60	2.5000	2.583
S1084Z-024DS064	S1086Z-024DS064	S1288Z-024D064	64	2.6667	2.750
S1084Z-024DS066	S1086Z-024DS066	S1288Z-024D066	66	2.7500	2.833
S1084Z-024DS069	S1086Z-024DS069	S1288Z-024D069	69	2.8750	2.958
S1084Z-024DS072	S1086Z-024DS072	S1288Z-024D072	72	3.0000	3.083
S1084Z-024DS078	S1086Z-024DS078	S1288Z-024D078	78	3.2500	3.333
S1084Z-024DS084	S1086Z-024DS084	S1288Z-024D084	84	3.5000	3.583
S1084Z-024DS090	S1086Z-024DS090	S1288Z-024D090	90	3.7500	3.833
S1084Z-024DS093	S1086Z-024DS093	S1288Z-024D093	93	3.8750	3.958

Available on special order: 14-1/2° P.A., teeth not listed, or different bore size.

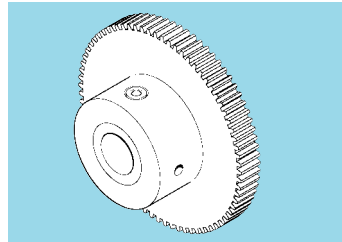
This product is also available with Fairloc® hubs. See page 1-127.



Molded Spur Gears - 24 Pitch



■ 1/4 FACE



MATERIAL: Gear - Acetal
Insert - Brass

Catalog Number	No. of Teeth	P.D.	O.D.	B Bore	C Hub Dia.	Set Screw	Type
A 1T 2-Y24012	12	.500	.583	3/16	3/8	#4-40	Plain
A 1T 2-Y24014	14	.583	.667		7/16		
A 1T 2-Y24015	15	.625	.708		31/64		
A 1T 2-Y24016	16	.667	.750				
A 1T 2-Y24017	17	.708	.792		35/64		
A 1T 2-Y24018	18	.750	.833				
A 1T 2-Y24019	19	.792	.875				
A 1T 2-Y24020	20	.833	.917				
A 1T 2-Y24021	21	.875	.958				
A 1T 2-Y24022	22	.917	1.000				
A 1T 2-Y24023	23	.958	1.042				
A 1T 2-Y24024	24	1.000	1.083	1/4		5/8	#6-32
A 1T 2-Y24025	25	1.042	1.125		39/64		
A 1T 2-Y24026	26	1.083	1.167		5/8		
A 1T 2-Y24027	27	1.125	1.208				
A 1T 2-Y24028	28	1.167	1.250		39/64		
A 1T 2-Y24030	30	1.250	1.333				
A 1T 2-Y24032	32	1.333	1.417				
A 1T 2-Y24033	33	1.375	1.458				
A 1T 2-Y24034	34	1.417	1.500		5/8		
A 1T 2-Y24036	36	1.500	1.583				
A 1T 2-Y24039	39	1.625	1.708	5/16	43/64	#8-32	Web
A 1T 2-Y24040	40	1.667	1.750				
A 1T 2-Y24042	42	1.750	1.833				
A 1T 2-Y24044	44	1.833	1.917				
A 1T 2-Y24045	45	1.875	1.958				
A 1T 2-Y24048	48	2.000	2.083				
A 1T 2-Y24050	50	2.083	2.167				
A 1T 2-Y24052	52	2.167	2.250				
A 1T 2-Y24054	54	2.250	2.333				
A 1T 2-Y24056	56	2.333	2.417				
A 1T 2-Y24060	60	2.500	2.583				

Inch Inch Inch Inch Inch Inch Inch Inch Inch Inch

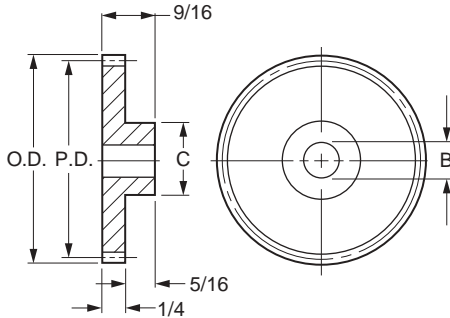


Molded Spur Gears - 24 Pitch

Stock Drive Products/Sterling Instrument ■ Phone: 516-328-3300 ■ Fax: 516-326-8827

■ 20° PRESSURE ANGLE

■ 1/4 FACE



MATERIAL: Acetal

Catalog Number	No. of Teeth	P.D.	O.D.	B Bore	C Hub Dia.	Type
A 1M 2-Y24012	12	.500	.583	3/16	3/8	Plain
A 1M 2-Y24014	14	.583	.667		7/16	
A 1M 2-Y24015	15	.625	.708		31/64	
A 1M 2-Y24016	16	.667	.750			
A 1M 2-Y24017	17	.708	.792		35/64	
A 1M 2-Y24018	18	.750	.833			
A 1M 2-Y24019	19	.792	.875			
A 1M 2-Y24020	20	.833	.917			
A 1M 2-Y24021	21	.875	.958			
A 1M 2-Y24022	22	.917	1.000			
A 1M 2-Y24023	23	.958	1.042			
A 1M 2-Y24024	24	1.000	1.083	1/4		5/8
A 1M 2-Y24025	25	1.042	1.125		39/64	
A 1M 2-Y24026	26	1.083	1.167		5/8	
A 1M 2-Y24027	27	1.125	1.208			
A 1M 2-Y24028	28	1.167	1.250			
A 1M 2-Y24030	30	1.250	1.333			
A 1M 2-Y24032	32	1.333	1.417		39/64	
A 1M 2-Y24033	33	1.375	1.458			
A 1M 2-Y24034	34	1.417	1.500			
A 1M 2-Y24036	36	1.500	1.583			
*A 1M 2-Y24036A				5/16	43/64	
A 1M 2-Y24039	39	1.625	1.708			
A 1M 2-Y24040	40	1.667	1.750			
A 1M 2-Y24042	42	1.750	1.833			
A 1M 2-Y24044	44	1.833	1.917			
A 1M 2-Y24045	45	1.875	1.958			
A 1M 2-Y24048	48	2.000	2.083			
A 1M 2-Y24050	50	2.083	2.167			
A 1M 2-Y24052	52	2.167	2.250			
A 1M 2-Y24054	54	2.250	2.333			
A 1M 2-Y24056	56	2.333	2.417			
A 1M 2-Y24060	60	2.500	2.583			

*Color: Gray

Discounts available on large quantity orders.



Molded Spur Gears - 24 Pitch

Stock Drive Products/Sterling Instrument Phone: 516-328-3300 Fax: 516-326-8827

■ 14-1/2° & 20° PRESSURE ANGLE

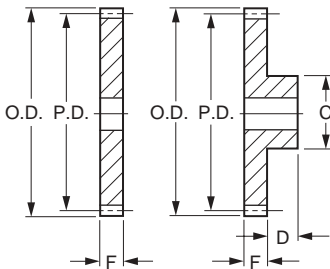
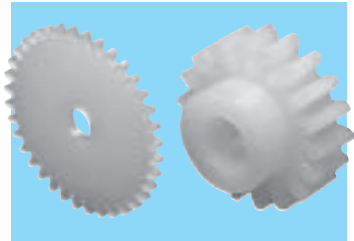
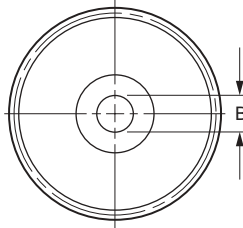


Fig. 1

Fig. 2



● 14-1/2° PRESSURE ANGLE

MATERIAL: Nylon 101

Catalog Number	Fig. No.	No. of Teeth	P.D.	O.D. Ref.	B Bore	F Face Width	C Hub Dia.	D Hub Proj.
A 1N 2-N24012	2	12	.500	.58		5/16	3/8	1/4
A 1N 1-N24015	1	15	.625	.71	1/4	7/32	—	—
A 1N 2-N24018	2	18	.750	.83		1/4	1/2	3/16
A 1N 2-N24024	2	24	1.000	1.08	1/4	1/4	5/8	3/8
A 1N 1-N24036	1	36	1.500	1.58	1/4	3/32	—	—
A 1N 2-N24084	2	84	3.500	3.58	3/8	5/16	27/32	1/4

* 84 teeth gear has six 5/8 diameter lightening holes on a 1.95 diameter circle.

● 20° PRESSURE ANGLE

MATERIAL: Nylon 101

Catalog Number	Fig. No.	No. of Teeth	P.D.	O.D. Ref.	B Bore	F Face Width	C Hub Dia.	D Hub Proj.
* A 1N 2-Y24018		18	.750	.83	.304	1/4	1/2	1/8
A 1N 2-Y24021	2	21	.875	.96	1/8	1/4	1/2	.31
A 1N 2-Y24036		36	1.500	1.58	.310	3/8	.738	1/4

*To be discontinued when present stock is depleted.



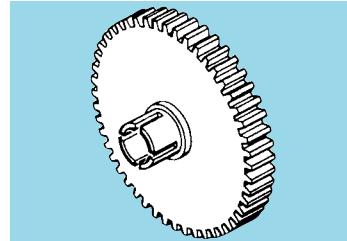
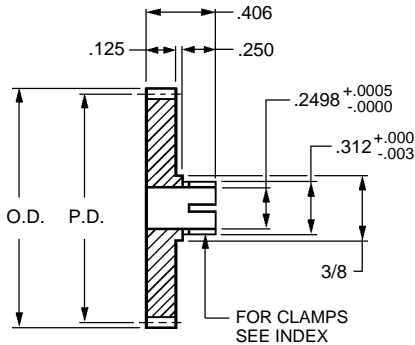
Clamp Type Spur Gears - 24 Pitch

■ AGMA Q10

■ 20° PRESSURE ANGLE

■ 1/8 FACE

■ 1/4 BORE



Catalog Number		No. of Teeth	P.D.	O.D.
303 Stainless Steel	2024 Aluminum * Anodized			
S1166Z-024S012	S1166Z-024A012	12	0.5000	0.583
S1166Z-024S015	S1166Z-024A015	15	0.6250	0.708
S1166Z-024S016	S1166Z-024A016	16	0.6667	0.750
S1166Z-024S018	S1166Z-024A018	18	0.7500	0.833
S1166Z-024S020	S1166Z-024A020	20	0.8333	0.917
S1166Z-024S021	S1166Z-024A021	21	0.8750	0.958
S1166Z-024S022	S1166Z-024A022	22	0.9167	1.000
S1166Z-024S024	S1166Z-024A024	24	1.0000	1.083
S1166Z-024S027	S1166Z-024A027	27	1.1250	1.208
S1166Z-024S030	S1166Z-024A030	30	1.2500	1.333
S1166Z-024S033	S1166Z-024A033	33	1.3750	1.458
S1166Z-024S036	S1166Z-024A036	36	1.5000	1.583
S1166Z-024S039	S1166Z-024A039	39	1.6250	1.708
S1166Z-024S042	S1166Z-024A042	42	1.7500	1.833
S1166Z-024S045	S1166Z-024A045	45	1.8750	1.958
S1166Z-024S048	S1166Z-024A048	48	2.0000	2.083
S1166Z-024S054	S1166Z-024A054	54	2.2500	2.333
S1166Z-024S060	S1166Z-024A060	60	2.5000	2.583
S1166Z-024S066	S1166Z-024A066	66	2.7500	2.833
S1166Z-024S069	S1166Z-024A069	69	2.8750	2.958
S1166Z-024S072	S1166Z-024A072	72	3.0000	3.083
S1166Z-024S075	S1166Z-024A075	75	3.1250	3.208
S1166Z-024S078	S1166Z-024A078	78	3.2500	3.333
S1166Z-024S081	S1166Z-024A081	81	3.3750	3.458
S1166Z-024S084	S1166Z-024A084	84	3.5000	3.583
S1166Z-024S087	S1166Z-024A087	87	3.6250	3.708
S1166Z-024S090	S1166Z-024A090	90	3.7500	3.833
S1166Z-024S093	S1166Z-024A093	93	3.8750	3.958
S1166Z-024S096	S1166Z-024A096	96	4.0000	4.083
S1166Z-024S099	S1166Z-024A099	99	4.1250	4.208

* T4 or T351 Aluminum Alloy, anodized before cutting.

Available on special order: 14-1/2° P.A., teeth not listed, different bore size and/or material, passivation for stainless steel.



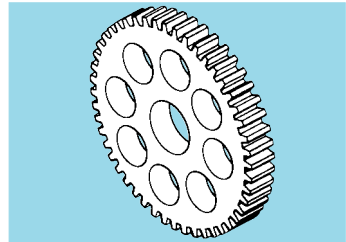
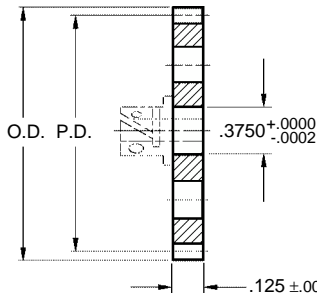
Hubless Spur Gears - 24 Pitch

■ AGMA Q10

■ 20° PRESSURE ANGLE

■ 1/8 FACE

■ 3/8 BORE



Hubs are available in Pin, Clamp, or Fairloc® type.

- All gears over 2-1/8" Dia. supplied with lightening holes.
- See index for hubs. Assembled upon request at nominal charge.

Catalog Number		No. of Teeth	P.D.	O.D.
303 Stainless Steel	2024 Aluminum* Anodized			
S1268Z-024S015	S1268Z-024A015	15	0.6250	0.708
S1268Z-024S016	S1268Z-024A016	16	0.6667	0.750
S1268Z-024S018	S1268Z-024A018	18	0.7500	0.833
S1268Z-024S020	S1268Z-024A020	20	0.8333	0.917
S1268Z-024S021	S1268Z-024A021	21	0.8750	0.958
S1268Z-024S024	S1268Z-024A024	24	1.0000	1.083
S1268Z-024S025	S1268Z-024A025	25	1.0417	1.125
S1268Z-024S026	S1268Z-024A026	26	1.0833	1.167
S1268Z-024S028	S1268Z-024A028	28	1.1667	1.250
S1268Z-024S030	S1268Z-024A030	30	1.2500	1.333
S1268Z-024S032	S1268Z-024A032	32	1.3333	1.417
S1268Z-024S036	S1268Z-024A036	36	1.5000	1.583
S1268Z-024S040	S1268Z-024A040	40	1.6667	1.750
S1268Z-024S042	S1268Z-024A042	42	1.7500	1.833
S1268Z-024S045	S1268Z-024A045	45	1.8750	1.958
S1268Z-024S046	S1268Z-024A046	46	1.9167	2.000
S1268Z-024S048	S1268Z-024A048	48	2.0000	2.083
S1268Z-024S050	S1268Z-024A050	50	2.0833	2.167
S1268Z-024S052	S1268Z-024A052	52	2.1667	2.250
S1268Z-024S056	S1268Z-024A056	56	2.3333	2.417
S1268Z-024S060	S1268Z-024A060	60	2.5000	2.583
S1268Z-024S064	S1268Z-024A064	64	2.6667	2.750
S1268Z-024S066	S1268Z-024A066	66	2.7500	2.833
S1268Z-024S070	S1268Z-024A070	70	2.9167	3.000
S1268Z-024S072	S1268Z-024A072	72	3.0000	3.083
S1268Z-024S078	S1268Z-024A078	78	3.2500	3.333
S1268Z-024S084	S1268Z-024A084	84	3.5000	3.583
S1268Z-024S090	S1268Z-024A090	90	3.7500	3.833
S1268Z-024S096	S1268Z-024A096	96	4.0000	4.083
S1268Z-024S099	S1268Z-024A099	99	4.1250	4.208

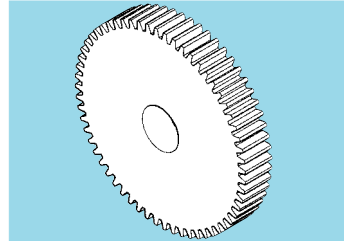
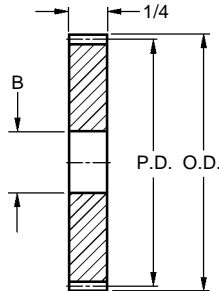
*T4 or T351 Aluminum Alloy, anodized before cutting.

Available on special order: 14-1/2° P.A., teeth not listed, different bore size and/or material, passivation for stainless steel.

**INCH****Hubless Spur Gears - 24 Pitch**

■ 14-1/2° PRESSURE ANGLE

■ 1/4 FACE WIDTH

**MATERIAL:** Steel

Catalog Number	No. of Teeth	P.D.	O.D.	B Bore
A 1C 1-N24012	12	.500	.583	
A 1C 1-N24014	14	.583	.667	
A 1C 1-N24015	15	.625	.708	1/4
A 1C 1-N24016	16	.667	.750	
A 1C 1-N24016A	16	.667	.750	5/16
A 1C 1-N24018	18	.750	.833	1/4
A 1C 1-N24018A	18	.750	.833	5/16
A 1C 1-N24020	20	.833	.917	1/4
A 1C 1-N24021	21	.875	.958	1/4
A 1C 1-N24021A	21	.875	.958	3/8
A 1C 1-N24022	22	.917	1.000	1/4
A 1C 1-N24024	24	1.000	1.083	3/8
A 1C 1-N24024A	24	1.000	1.083	1/2
A 1C 1-N24028	28	1.167	1.250	3/8
A 1C 1-N24030	30	1.250	1.333	1/2
A 1C 1-N24032	32	1.333	1.417	3/8
A 1C 1-N24036	36	1.500	1.583	3/8
A 1C 1-N24036A	36	1.500	1.583	
A 1C 1-N24040	40	1.667	1.750	
A 1C 1-N24042	42	1.750	1.833	1/2
A 1C 1-N24044	44	1.833	1.917	
A 1C 1-N24045	45	1.875	1.958	3/8
A 1C 1-N24048	48	2.000	2.083	3/8
A 1C 1-N24048A	48	2.000	2.083	1/2
A 1C 1-N24054	54	2.250	2.333	3/8
A 1C 1-N24056	56	2.333	2.417	
A 1C 1-N24060	60	2.500	2.583	
A 1C 1-N24064	64	2.667	2.750	1/2
A 1C 1-N24066	66	2.750	2.833	
A 1C 1-N24072	72	3.000	3.083	

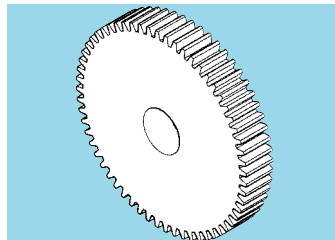
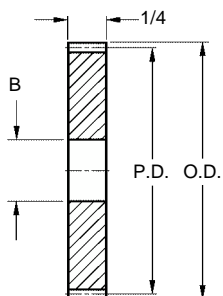
For large quantity orders, discounts available.



Hubless Spur Gears - 24 Pitch

■ 14-1/2° PRESSURE ANGLE

■ 1/4 FACE WIDTH



MATERIAL: Brass

Catalog Number	No. of Teeth	P.D.	O.D.	B Bore
A 1B 1-N24008	8	.333	.417	1/8
A 1B 1-N24009	9	.375	.458	
A 1B 1-N24010	10	.417	.500	
A 1B 1-N24011	11	.458	.542	3/16
A 1B 1-N24012	12	.500	.583	
A 1B 1-N24014	14	.583	.667	
A 1B 1-N24015	15	.625	.708	
A 1B 1-N24016	16	.667	.750	
A 1B 1-N24018	18	.750	.833	
A 1B 1-N24020	20	.833	.917	
A 1B 1-N24024	24	1.000	1.083	

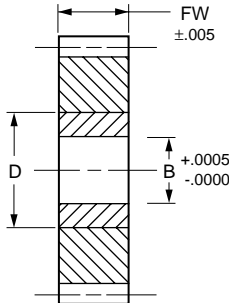
Modifications of standard parts performed at nominal charge.



Hubless Composite Spur Gears - 24 Pitch

- AGMA Q9
- 20° PRESSURE ANGLE
- 1/4 & 3/8 FACES
- 3/8 & 1/2 BORES

INTECH Power-Core™

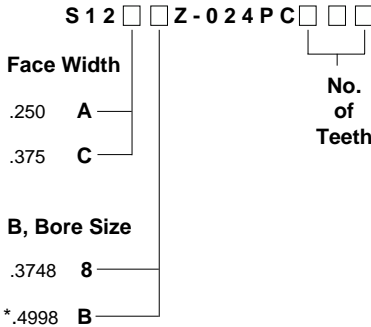


FEATURES:

- Self-lubricating
- Quiet operation
- Precision hobbed & machined
- Integral metal core
- Dimensionally stable against moisture
- High torque transmission
- Lightweight
- Shock-absorbent
- Noncorrodible

MATERIAL: Gear- Cast Nylon 12 (PA12G)
Knurled Core - 303 Stainless Steel

CATALOG NUMBER DESIGNATION:



No. of Teeth	P.D.	O.D.	D Core Dia.
24	1.0000	1.083	.630
30	1.2500	1.333	.787
32	1.3333	1.417	.787
36	1.5000	1.583	.787
48	2.0000	2.083	1.181
60	2.5000	2.583	1.378
64	2.6666	2.750	1.378
72	3.0000	3.083	1.575
96	4.0000	4.083	1.969

* Only available with 48 to 96 teeth

Example:

S12A8Z-024PC064 is a .250 Face, .3748 Bore, 24 Pitch Hubless Spur Gear with 64 Teeth.

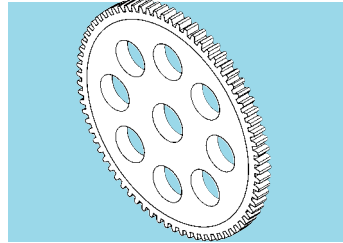
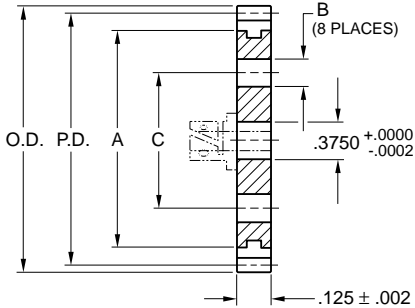
NOTE: Other face widths, number of teeth, bore diameters and carbon steel core available on special order.

See pages 1-6 thru 1-8 for technical data on Power-Core™ material.



Aluminum-Acetal Gears - 24 Pitch

- AGMA Q10
- 20° PRESSURE ANGLE
- 1/8 FACE
- 3/8 BORE



MATERIAL: Core – Aluminum 2024-T3, Chemical Filmed
Rim – Acetal

Catalog Number	No. of Teeth	P.D.	O.D.	A Dia.	B Dia.	C Dia.
S1268Z-024M021	21	0.8750	0.958	5/8	—	—
S1268Z-024M024	24	1.0000	1.083			
S1268Z-024M025	25	1.0417	1.125	7/8		
S1268Z-024M030	30	1.2500	1.333			
S1268Z-024M032	32	1.3333	1.417	1-1/8		
S1268Z-024M035	35	1.4583	1.542			
S1268Z-024M036	36	1.5000	1.583			
S1268Z-024M040	40	1.6667	1.750			
S1268Z-024M042	42	1.7500	1.833	1-3/8		
S1268Z-024M045	45	1.8750	1.958			
S1268Z-024M046	46	1.9167	2.000	1-5/8	7/32	13/16
S1268Z-024M048	48	2.0000	2.083			
S1268Z-024M050	50	2.0833	2.167			
S1268Z-024M055	55	2.2917	2.375	2-1/8	3/8	1-3/8
S1268Z-024M056	56	2.3333	2.417			
S1268Z-024M060	60	2.5000	2.583			
S1268Z-024M064	64	2.6667	2.750	2-3/8		1-3/8
S1268Z-024M065	65	2.7083	2.792			
S1268Z-024M070	70	2.9167	3.000	2-5/8		1-3/4
S1268Z-024M072	72	3.0000	3.083			
S1268Z-024M084	84	3.5000	3.583	3-1/8		
S1268Z-024M096	96	4.0000	4.083		3-5/8	

See Index for hubs. Assembled upon request at a nominal charge.
Available on special order: 14-1/2° P.A., teeth not listed, different bore and/or materials.



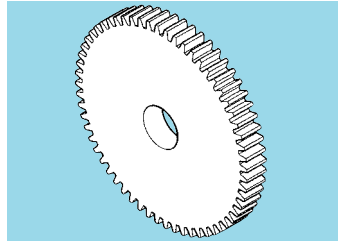
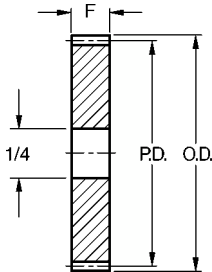
INCH

Nonmetallic Hubless Spur Gears - 24 Pitch

■ 14-1/2° PRESSURE ANGLE

■ MACHINED

■ 1/4 BORE



MATERIAL: Bakelite
250° F - Maximum Temperature

Catalog Number	No. of Teeth	P.D.	O.D.	F Face Width
A 1P 1-N24018	18	.750	.833	3/8
A 1P 1-N24021	21	.875	.958	
A 1P 1-N24048	48	2.000	2.083	1/4
A 1P 1-N24096	96	4.000	4.083	

NOTE: To be discontinued when present stock is depleted.

Did You Know?

... That pricing for any component in this catalog is available through the Sales Department? Simply call, fax or write in your request for a quote for any component that you think you might want to use in your design.

CALL: 516-328-3300

or FAX: 516-326-8827