

MATERIAL: 303 Stainless Steel

Priced Per 100 Pieces

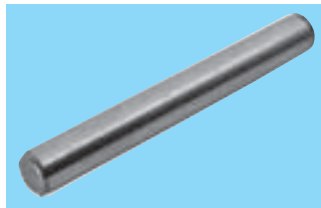
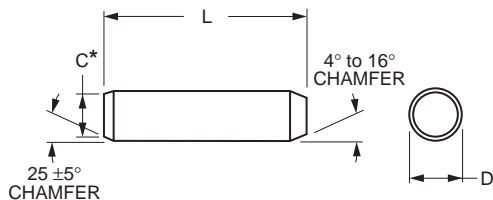
Catalog Number	D Diameter +.0002 -.0000	L Length ± .01
A 9X31-0103	.0312	.094
A 9X31-0104		.125
A 9X31-0105		.156
A 9X31-0106		.188
A 9X31-0107		.219
A 9X31-0108		.25
A 9X31-0110		.312
A 9X31-0112		.375
A 9X31-0114		.438
A 9X31-0116		.50
A 9X31-0118		.562
A 9X31-0120		.625
A 9X31-0124	.75	
A 9X31-0128	.875	
A 9X31-0203	.0625	.094
A 9X31-0204		.125
A 9X31-0205		.156
A 9X31-0206		.188
A 9X31-0207		.219
A 9X31-0208		.25
A 9X31-0210		.312
A 9X31-0212		.375
A 9X31-0214		.438
A 9X31-0216		.50
A 9X31-0218		.562
A 9X31-0220		.625
A 9X31-0224	.75	
A 9X31-0228	.875	
A 9X31-0232	1.00	
A 9X31-0303	.0937	.094
A 9X31-0304		.125
A 9X31-0305		.156
A 9X31-0306		.188
A 9X31-0307		.219
A 9X31-0308		.25
A 9X31-0310		.312
A 9X31-0312		.375
A 9X31-0314		.438
A 9X31-0316		.50
A 9X31-0318		.562
A 9X31-0320		.625
A 9X31-0324	.75	
A 9X31-0328	.875	
A 9X31-0332	1.00	
A 9X31-0340	1.25	

Catalog Number	D Diameter +.0002 -.0000	L Length ± .01
A 9X31-0344	.0937	1.375
A 9X31-0348		1.50
A 9X31-0403		.094
A 9X31-0404		.125
A 9X31-0405	.1250	.156
A 9X31-0406		.188
A 9X31-0407		.219
A 9X31-0408		.25
A 9X31-0410		.312
A 9X31-0412		.375
A 9X31-0414		.438
A 9X31-0416		.50
A 9X31-0418		.562
A 9X31-0420		.625
A 9X31-0424		.75
A 9X31-0428		.875
A 9X31-0432	1.00	
A 9X31-0440	1.25	
A 9X31-0444	1.375	
A 9X31-0448	1.50	
A 9X31-0456	.1875	1.75
A 9X31-0464		2.00
A 9X31-0608		.25
A 9X31-0610		.312
A 9X31-0612		.375
A 9X31-0614		.438
A 9X31-0616		.50
A 9X31-0620		.625
A 9X31-0624		.75
A 9X31-0628		.875
A 9X31-0632		1.00
A 9X31-0640		1.25
A 9X31-0648	1.50	
A 9X31-0656	1.75	
A 9X31-0664	2.00	
A 9X31-0816	.2500	.50
A 9X31-0820		.625
A 9X31-0824		.75
A 9X31-0828		.875
A 9X31-0832		1.00
A 9X31-0840		1.25
A 9X31-0848		1.50
A 9X31-0856		1.75
A 9X31-0864	2.00	

Other lengths and diameters available on special order.

## ■ STAINLESS STEEL

## ■ HARDENED

**MATERIAL:** Heat-Treated Type 416 Stainless Steel, Rc 36-40**FINISH DIAMETER:** .0002 Over Nominal ±.0001 Tolerance

\* "C" Diameter = "D" Diameter - .015 ±.005 Tolerance

Priced Per 100 Pieces

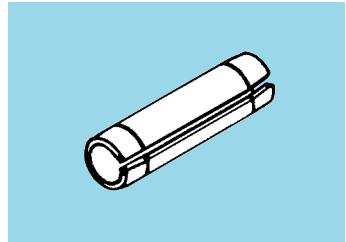
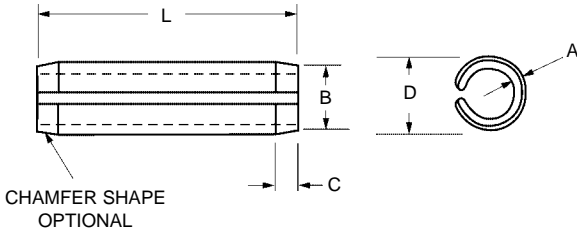
Catalog Number	D Diameter ±.0001	L Length ±.01	Catalog Number	D Diameter ±.0001	L Length ±.01
A 9Y31-0206	.0627	.188	A 9Y31-0432	.1252	1.00
A 9Y31-0208		.25	A 9Y31-0440		1.25
A 9Y31-0210		.312	A 9Y31-0448	1.50	
A 9Y31-0212		.375	A 9Y31-0516	.1564	.50
A 9Y31-0214	.437	A 9Y31-0520	.625		
A 9Y31-0216	.50	A 9Y31-0524	.75		
A 9Y31-0220	.625	A 9Y31-0528	.875		
A 9Y31-0224	.75	A 9Y31-0532	1.00		
A 9Y31-0310	.0939	.312	A 9Y31-0540	1.25	
A 9Y31-0312		.375	A 9Y31-0620	.1877	.625
A 9Y31-0314		.437	A 9Y31-0624		.75
A 9Y31-0316		.50	A 9Y31-0628		.875
A 9Y31-0320	.625	A 9Y31-0632	1.00		
A 9Y31-0324	.75	A 9Y31-0640	1.25		
A 9Y31-0328	.875	A 9Y31-0648	1.50		
A 9Y31-0332	1.00	A 9Y31-0824	.2502	.75	
A 9Y31-0412	.1252	.375		A 9Y31-0828	.875
A 9Y31-0414		.437		A 9Y31-0832	1.00
A 9Y31-0416		.50		A 9Y31-0840	1.25
A 9Y31-0420		.625	A 9Y31-0848	1.50	
A 9Y31-0424	.75	A 9Y31-0856	1.75		
A 9Y31-0428	.875	A 9Y31-0864	2.00		

Modifications of standard parts performed at nominal charge.





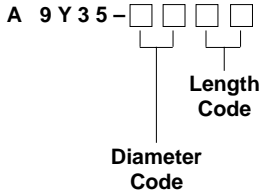
# Stainless Steel Roll Pins



**MATERIAL:** 420 Stainless Steel – Rc 46-52

Priced Per 100 Pieces

**CATALOG NUMBER DESIGNATION:**



Example:

A 9Y35-0632 is a Stainless Steel Roll Pin with a 3/16" Nominal Diameter, 1" Long.

NOMINAL DIAMETER					Length Code	L Length
1/16	3/32	1/8	5/32	3/16		
Dia. Code	Dia. Code	Dia. Code	Dia. Code	Dia. Code		
02	03	04 <sup>Δ</sup>	05	06	06	.188
					08	.250
		10			.312	
		12			.375	
		14			.437	
		16			.500	
		18			.562	
		20			.625	
		22			.687	
		24			.750	
		26			.812	
		28			.875	
30	.937					
32	1.000					
					36	1.125
					40	1.250
					44	1.375
					48	1.500

Shaded areas represent sizes not available.

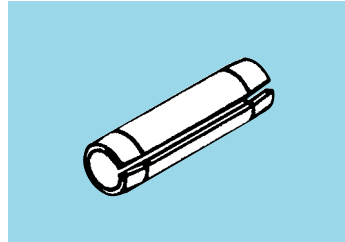
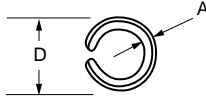
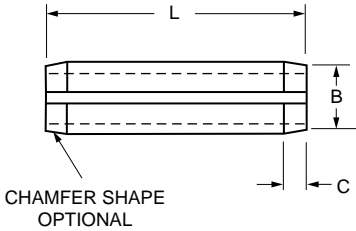
<sup>Δ</sup> To be discontinued when present stock is depleted.

Nominal Diameter	A Wall Thickness	B Diameter (Max.)	C Chamfer		D Diameter		Recommended Hole Size	
			Min.	Max.	Min.	Max.	Min.	Max.
1/16	.012	.059	.007	.028	.066	.069	.062	.065
3/32	.022	.091	.008	.038	.099	.103	.094	.097
1/8	.028	.122	.008	.044	.131	.135	.125	.129
5/32	.032	.151	.010	.048	.162	.167	.156	.160
3/16	.042	.182	.011	.055	.194	.199	.187	.192

10 HARDWARE



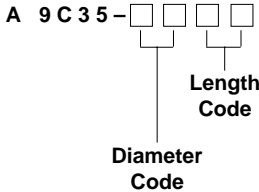
# Carbon Steel Roll Pins



**MATERIAL:** Carbon Spring Steel

Priced Per 100 Pieces

**CATALOG NUMBER DESIGNATION:**



Example:

A 9C35-0632 is a Carbon Steel Roll Pin with a 3/16" Nominal Diameter, 1" Long.

NOMINAL DIAMETER					Length Code	L Length
1/16	3/32	1/8	5/32	3/16		
Dia. Code	Dia. Code	Dia. Code	Dia. Code	Dia. Code		
02	03	04	05	06	06	.188
					08	.250
		10			.312	
		12			.375	
		14			.438	
		16			.500	
		18			.562	
		20			.625	
		22			.688	
		24			.750	
26	.812					
28	.875					
30	.938					
32	1.000					
					36	1.125
					40	1.250
					44	1.375
					48	1.500

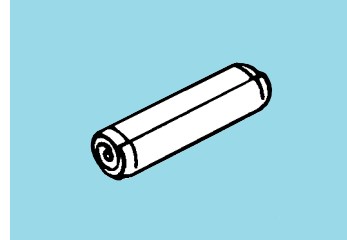
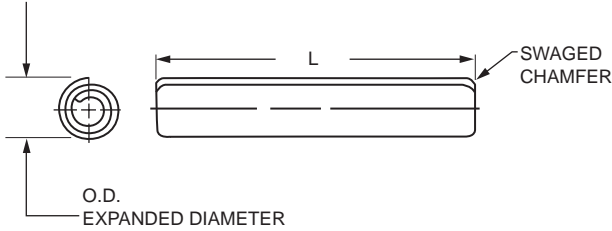
Shaded areas represent sizes not available.

Nominal Diameter	A Wall Thickness	B Diameter (Max.)	C Chamfer		D Diameter		Recommended Hole Size	
			Min.	Max.	Min.	Max.	Min.	Max.
1/16	.012	.059	.007	.028	.066	.069	.062	.065
3/32	.022	.091	.008	.038	.099	.103	.094	.097
1/8	.028	.122		.044	.131	.135	.125	.129
5/32	.032	.151	.010	.048	.162	.167	.156	.160
3/16	.042	.182	.011	.055	.194	.199	.187	.192



# Stainless Steel Spirol Pins

## ■ STANDARD-DUTY



MATERIAL: 302 Stainless Steel

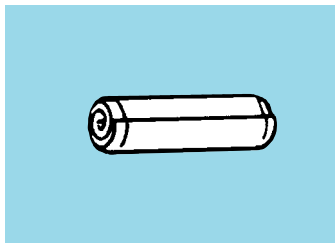
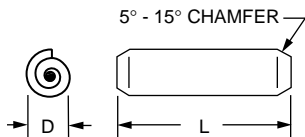
Priced Per 100 Pieces

Catalog Number	Shaft Size	O.D.	L ± .010	Drill Size			
S7220Y-03304	3/32	.033 +.002 -.000	1/8	.031 +.001 -.000			
S7220Y-03306			3/16				
S7220Y-03308			1/4				
S7220Y-03310			5/16				
S7220Y-03312	1/8	.041 +.003 -.000	3/8	.039 +.001 -.000			
S7220Y-04106			3/16				
S7220Y-04108			1/4				
S7220Y-04110			5/16				
S7220Y-04112	1/8	.049 +.003 -.000	3/8	.047 ±.001			
S7220Y-04114			7/16				
S7220Y-04116			1/2				
S7220Y-04906			1/8		.054 +.003 -.000	3/16	.052 ±.001
S7220Y-04908	1/4						
S7220Y-04910	5/16						
S7220Y-04912	3/8						
S7220Y-04914	1/8	.054 +.003 -.000	7/16	.052 ±.001			
S7220Y-04916			1/2				
S7220Y-05406			1/8		.054 +.003 -.000	3/16	.052 ±.001
S7220Y-05408						1/4	
S7220Y-05410	5/16						
S7220Y-05412	3/8						
S7220Y-05414	1/8	.054 +.003 -.000	7/16	.052 ±.001			
S7220Y-05416			1/2				

Catalog Number	Shaft Size	O.D.	L ± .010	Drill Size
S7220Y-06708	3/16	.067 +.005 -.000	1/4	.062 +.003 -.001
S7220Y-06710			5/16	
S7220Y-06712			3/8	
S7220Y-06714			7/16	
S7220Y-06716	1/4 & 5/16	.099 +.006 -.000	1/2	.094 +.003 -.001
S7220Y-06718			9/16	
S7220Y-06720			5/8	
S7220Y-09912			3/8	
S7220Y-09914	3/8 7/16 & 1/2	.131 +.007 -.000	7/16	.125 +.004 -.001
S7220Y-09916			1/2	
S7220Y-09918			9/16	
S7220Y-09920			5/8	
S7220Y-09922	3/8 7/16 & 1/2	.131 +.007 -.000	11/16	.125 +.004 -.001
S7220Y-13112			3/8	
S7220Y-13114			7/16	
S7220Y-13116			1/2	
S7220Y-13118	3/8 7/16 & 1/2	.131 +.007 -.000	9/16	.125 +.004 -.001
S7220Y-13120			5/8	
S7220Y-13122			11/16	
S7220Y-13124			3/4	
S7220Y-13128	3/8 7/16 & 1/2	.131 +.007 -.000	7/8	.125 +.004 -.001
S7220Y-13132			1"	



■ MEDIUM-DUTY



MATERIAL: Carbon Steel (Hardened), Rc Scale 46-53, Oiled Finish

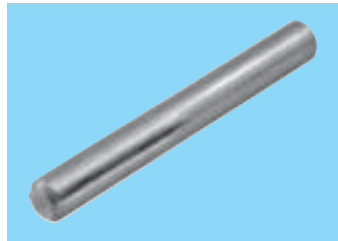
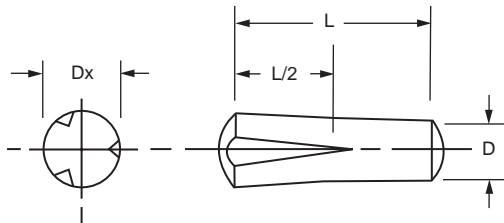
Priced Per 100 Pieces

Catalog Number	D Expanded Diameter		L ± .010 Length	Drill Size	
	Min.	Max.		Min.	Max.
	* A 9Q36-0104			.125	
* A 9Q36-0106			.188		
* A 9Q36-0108			.250		
* A 9Q36-0110	.033	.035	.312	.031	.032
* A 9Q36-0112			.375		
* A 9Q36-0114			.438		
* A 9Q36-0116			.500		
* A 9Q36-0118			.562		
A 9Q36-0206			.188		
A 9Q36-0208			.250		
A 9Q36-0210			.312		
A 9Q36-0212	.067	.072	.375	.061	.065
A 9Q36-0214			.438		
A 9Q36-0216			.500		
A 9Q36-0218			.562		
A 9Q36-0220			.625		
A 9Q36-0222			.688		
A 9Q36-0224			.750		
A 9Q36-0226			.812		
A 9Q36-0228	.067	.072	.875	.061	.065
A 9Q36-0230			.938		
A 9Q36-0232			1.000		
A 9Q36-0308			.250		
A 9Q36-0310			.312		
A 9Q36-0312			.375		
A 9Q36-0314			.438		
A 9Q36-0316			.500		
A 9Q36-0318	.099	.105	.562	.093	.097
A 9Q36-0320			.625		
A 9Q36-0322			.688		
A 9Q36-0324			.750		
A 9Q36-0326			.812		
A 9Q36-0328			.875		
A 9Q36-0330			.938		
A 9Q36-0332	.099	.105	1.000	.093	.097
A 9Q36-0336			1.125		
A 9Q36-0340			1.250		
A 9Q36-0410	.131	.138	.312	.124	.129
A 9Q36-0412			.375		

\* Made of 420 Stainless Steel - Rc 46-55.

Catalog Number	D Expanded Diameter		L ± .010 Length	Drill Size	
	Min.	Max.		Min.	Max.
	A 9Q36-0414			.438	
A 9Q36-0416			.500		
A 9Q36-0418			.562		
A 9Q36-0420	.131	.138	.625	.124	.129
A 9Q36-0422			.688		
A 9Q36-0424			.750		
A 9Q36-0426			.812		
A 9Q36-0428			.875		
A 9Q36-0430			.938		
A 9Q36-0432			1.000		
A 9Q36-0436	.131	.138	1.125	.124	.129
A 9Q36-0440			1.250		
A 9Q36-0444			1.375		
A 9Q36-0448			1.500		
A 9Q36-0514			.438		
A 9Q36-0516			.500		
A 9Q36-0518			.562		
A 9Q36-0520	.163	.171	.625	.155	.160
A 9Q36-0522			.688		
A 9Q36-0524			.750		
A 9Q36-0526			.812		
A 9Q36-0528			.875		
A 9Q36-0530			.938		
A 9Q36-0532			1.000		
A 9Q36-0536	.163	.171	1.125	.155	.160
A 9Q36-0540			1.250		
A 9Q36-0544			1.375		
A 9Q36-0548			1.500		
A 9Q36-0616			.500		
A 9Q36-0618			.562		
A 9Q36-0620			.625		
A 9Q36-0622	.196	.205	.688	.185	.192
A 9Q36-0624			.750		
A 9Q36-0626			.812		
A 9Q36-0628			.875		
A 9Q36-0630			.938		
A 9Q36-0632			1.000		
A 9Q36-0636			1.125		
A 9Q36-0640	.196	.205	1.250	.185	.192
A 9Q36-0644			1.375		
A 9Q36-0648			1.500		

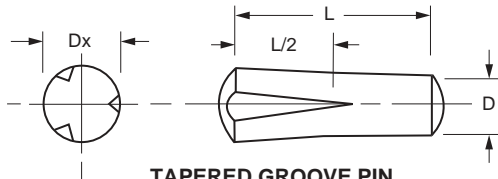
Other lengths and diameters on special order.



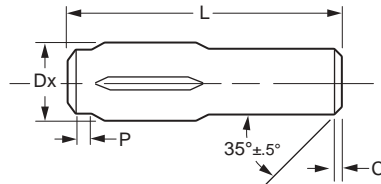
MATERIAL: 303 Stainless Steel

Priced Per 100 Pieces

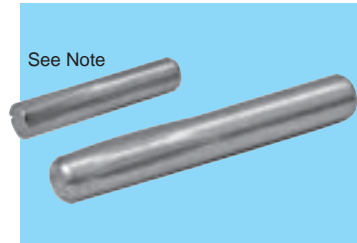
Catalog Number	D Diameter	Dx Expanded Diameter	L ±.010	Drill Size
S7210Y-04712	.0469	.050	.385	3/64
S7210Y-04716	+0.000	±.0015	1/2	
S7210Y-04720	-.0015		5/8	
S7210Y-06212	.0625	.066	3/8	1/16
S7210Y-06216	+0.000	±.0015	1/2	
S7210Y-06220	-.0015		5/8	
S7210Y-07812	.0781	.082	3/8	5/64
S7210Y-07816	+0.000	±.0015	1/2	
S7210Y-07820	-.0015		5/8	
S7210Y-09412	.0938	.099	3/8	3/32
S7210Y-09416	+0.000	±.002	1/2	
S7210Y-09420	-.0015		5/8	
S7210Y-09424			3/4	
S7210Y-12516	.1250	.132	1/2	1/8
S7210Y-12520	+0.000	±.0025	5/8	
S7210Y-12524	-.002		3/4	
S7210Y-12532			1	
S7210Y-15616	.1563	.164	1/2	5/32
S7210Y-15620	+0.000	±.0025	5/8	
S7210Y-15624	-.002		3/4	
S7210Y-15632			1	

**TAPERED GROOVE PIN**

(3 tapered grooves extending half the length of the pin)

**PARALLEL GROOVE PIN**

(3 parallel grooves extending half the length of the pin)

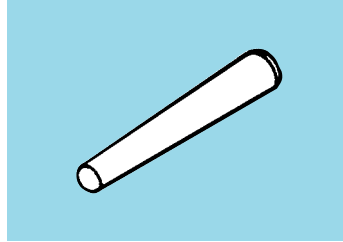
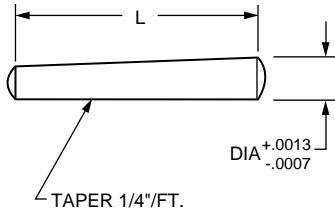
**MATERIAL:** Carbon Steel**FINISH:** Zinc Plated

Priced Per 1000 Pieces

Catalog Number	D Diameter		Dx Expanded Diameter		L Length ±.01	P (Ref.)	C Chamfer Length Min.
	Min.	Max.	Min.	Max.			
* A 9C37-0208	.061	.062	.067	.069	.25	1/32	.005
A 9C37-0212					.375		
A 9C37-0216					.50		
A 9C37-0220					.625		
A 9C37-0224					.75		
A 9C37-0228					.875		
A 9C37-0232	1.00						
A 9C37-0308	.093	.094	.100	.102	.25	1/32	.005
* A 9C37-0312					.375		
A 9C37-0316					.50		
* A 9C37-0320					.625		
A 9C37-0324	.75						
A 9C37-0412	.123	.125	.132	.136	.375	1/32	.005
A 9C37-0416					.50		
A 9C37-0428					.875		
A 9C37-0432					1.00		
A 9C37-0440					1.250		
A 9C37-0528					.875		
* A 9C37-0612	.180	.188	.196	.200	.375	1/16	.016
* A 9C37-0616					.50		
* A 9C37-0624					.75		
* A 9C37-0628					.875		
* A 9C37-0664					2.00		

**NOTE:** The tapered groove pin style shown above will be replaced by a parallel groove type when current stock is depleted.

\*To be discontinued when present stock is depleted.



MATERIAL: 303 Stainless Steel

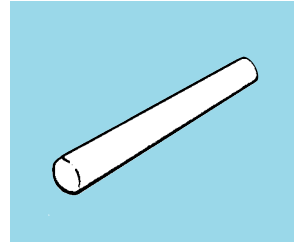
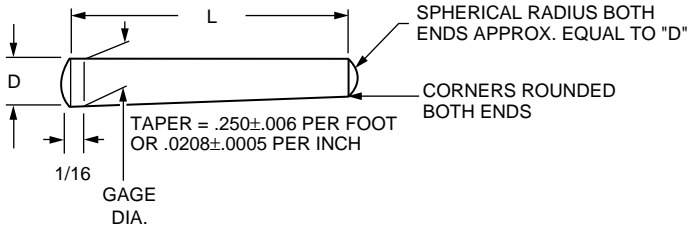
Priced Per 100 Pieces

Catalog Number	Shaft Size	Pin Size	Dia.	L ± .030	Catalog Number	Shaft Size	Pin Size	Dia.	L ± .030
S7250Y-9008	3/32	9/0	.031	1/4	S7250Y-5016	1/4	5/0	.094	1/2
S7250Y-9012				3/8					S7250Y-5018
S7250Y-8008	1/8	8/0	.047	1/4	S7250Y-5020	5/16	4/0	.109	5/8
S7250Y-8012				3/8	S7250Y-5024				3/4
S7250Y-8016				1/2	S7250Y-5028				7/8
S7250Y-7012				3/8	S7250Y-4020				5/8
S7250Y-7014	3/16	7/0	.0625	7/16	S7250Y-4024	5/16	4/0	.109	3/4
S7250Y-7016				1/2	S7250Y-4028				7/8
S7250Y-7018				9/16	S7250Y-4032				1
S7250Y-7020				5/8	S7250Y-3020				5/8
S7250Y-6014	7/32	6/0	.078	7/16	S7250Y-3024	3/8	3/0	.125	3/4
S7250Y-6016				1/2	S7250Y-3028				7/8
S7250Y-6018				9/16	S7250Y-3032				1
S7250Y-6020				5/8	S7250Y-2024				3/4
S7250Y-6024				3/4	S7250Y-2028				7/8
					S7250Y-2032				1
		S7250Y-2040	1-1/4						

**NOTE:** To find small diameter of pin, multiply the length by 0.02083 and subtract the result from the large diameter.  
Different pin sizes and lengths available on special order.



## Taper Pins



MATERIAL: Carbon Steel (Unhardened)

Priced Per 100 Pieces

Catalog Number	Taper Pin No.	D Dia.	Gage Dia. +.001 -.000	L ±.010 Length	Catalog Number	Taper Pin No.	D Dia.	Gage Dia. +.001 -.000	L ±.010 Length
A 9C38-7008	7/0	.062	.0615	.250	A 9C38-4030	4/0	.109	.1079	.938
A 9C38-7010				.312	A 9C38-4032				1.000
A 9C38-7012				.375	A 9C38-3008				.250
A 9C38-7014				.438	A 9C38-3016				.500
A 9C38-7016				.500	A 9C38-3018				.562
A 9C38-6008	6/0	.078	.0770	.250	A 9C38-3020	3/0	.125	.1238	.625
A 9C38-6010				.312	A 9C38-3022				.688
A 9C38-6012				.375	A 9C38-3024				.750
A 9C38-6014				.438	A 9C38-3026				.812
A 9C38-6016				.500	A 9C38-3028				.875
A 9C38-6018	5/0	.094	.0929	.562	A 9C38-3030	2/0	.141	.1398	.938
A 9C38-6020				.625	A 9C38-3032				1.000
A 9C38-5008				.250	A 9C38-2012				.375
A 9C38-5012				.375	A 9C38-2016				.500
A 9C38-5014				.438	A 9C38-2018				.562
A 9C38-5016	5/0	.094	.0929	.500	A 9C38-2020	2/0	.141	.1398	.625
A 9C38-5018				.562	A 9C38-2022				.688
A 9C38-5020				.625	A 9C38-2024				.750
A 9C38-5022				.688	A 9C38-2026				.812
A 9C38-5024				.750	A 9C38-2028				.875
A 9C38-5028	4/0	.109	.1079	.875	A 9C38-2032	0	.156	.1548	1.000
* A 9C38-5030				.938	A 9C38-0016				.500
A 9C38-5032				1.000	A 9C38-0018				.562
A 9C38-4012				.375	A 9C38-0020				.625
A 9C38-4016				.500	A 9C38-0022				.688
A 9C38-4018	4/0	.109	.1079	.562	A 9C38-0024	0	.156	.1548	.750
A 9C38-4020				.625	A 9C38-0026				.812
A 9C38-4022				.688	A 9C38-0028				.875
A 9C38-4024				.750	* A 9C38-0030				.938
A 9C38-4028				.875	A 9C38-0032				1.000

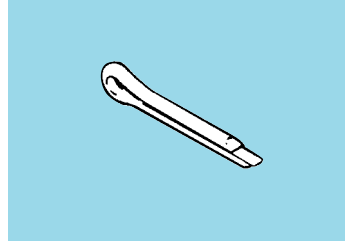
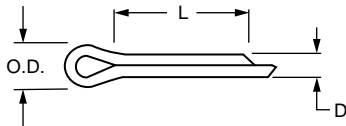
\* These items are hardened.



## Cotter Pins

## ■ EXTENDED PRONG

## ■ CHISEL POINT



**MATERIAL:** Steel  
**FINISH:** Zinc Plated

Priced Per 1000 Pieces

Catalog Number	D Diameter		O.D. Min.	L Length	Drill Hole Size
	Nom.	Tol.			
A 9C33-0104	1/32	.028 .032	.06	1/4	.047
A 9C33-0108				1/2	
A 9C33-0112				3/4	
A 9C33-0116	1/16	.056 .060	.12	1	.078
A 9C33-0120				1-1/4	
A 9C33-0124				1-1/2	
A 9C33-0204				1/4	
A 9C33-0208	1/2	.19	.109	3/4	
A 9C33-0212	3/4				
A 9C33-0216	1				
A 9C33-0220	1/8	.116 .120	.25	1-1/4	.141
A 9C33-0224				1-1/2	
A 9C33-0228				1-3/4	
A 9C33-0232				2	
A 9C33-0308	3/32	.086 .090	.19	1/2	.109
A 9C33-0312				3/4	
A 9C33-0316				1	

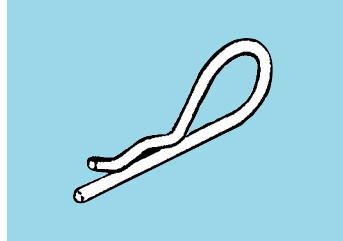
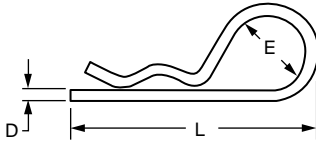
Catalog Number	D Diameter		O.D. Min.	L Length	Drill Hole Size
	Nom.	Tol.			
A 9C33-0320	3/32	.086 .090	.19	1-1/4	.109
A 9C33-0324				1-1/2	
A 9C33-0328				1-3/4	
A 9C33-0332	1/8	.116 .120	.25	2	.141
A 9C33-0336				2-1/4	
A 9C33-0340				2-1/2	
A 9C33-0348				3	
A 9C33-0408	3/32	.086 .090	.19	1/2	.109
A 9C33-0412				3/4	
A 9C33-0416				1	
A 9C33-0420	1/8	.116 .120	.25	1-1/4	.141
A 9C33-0424				1-1/2	
A 9C33-0428				1-3/4	
A 9C33-0432				2	
A 9C33-0436	3/32	.086 .090	.19	2-1/4	.109
A 9C33-0440				2-1/2	
A 9C33-0448				3	

Discounts available for large quantity orders.



## Hitch Pins

## ■ INTERNAL



**MATERIAL:** Spring Wire, Oil-Tempered

**FINISH:** Plated

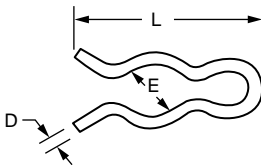
Priced Per 1000 Pieces

Catalog Number	D Diameter	Drill Hole Size	Recommended Shaft Diameter		E Inside Diameter of Eye	L Length
			Minimum	Maximum		
A 9Q34-23	.042	3/64	3/16	1/4	1/4	1
A 9Q34-21	.047	1/16	1/8	3/16	1/8	19/32
A 9Q34-22	.062	5/64	1/4	1/2	5/16	1-5/16
A 9Q34-18		3/8	1-9/16			
A 9Q34-13	.080	3/32	1/4	3/8	1/4	1-3/16
A 9Q34-17			3/8	1/2	5/16	1-9/16
A 9Q34-03	.093	7/64	1/4	1/2	3/8	1-5/8
A 9Q34-07			1/4	5/8	5/8	2-5/16
A 9Q34-14			3/8	3/4	7/16	2-1/2



## Hitch Pins

## ■ EXTERNAL



**MATERIAL:** Spring Wire, Oil-Tempered

**FINISH:** Plated

Priced Per 1000 Pieces

Catalog Number	D Diameter	Recommended Groove Dimensions		E Inside Diameter of Eye	L Length
		Diameter	Width		
A 9Q34-X1	.032	5/32	3/64	1/8	15/32
A 9Q34-X2	.062	3/8	5/64	5/16	1
A 9Q34-X3		1/4		3/16	11/16
A 9Q34-X4	.047	1/4	1/16	3/16	7/8

Other materials available on special order.