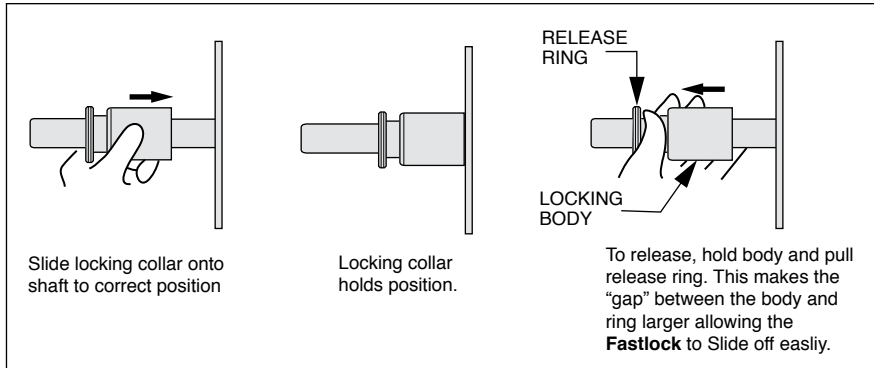
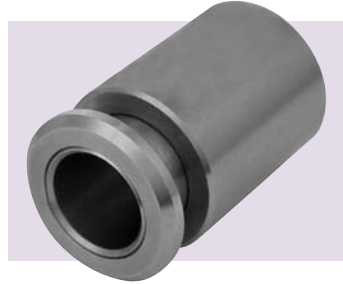
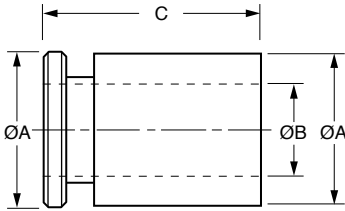


■ NO TOOLS NEEDED

■ USABLE FOR NONHARDENED SHAFTS



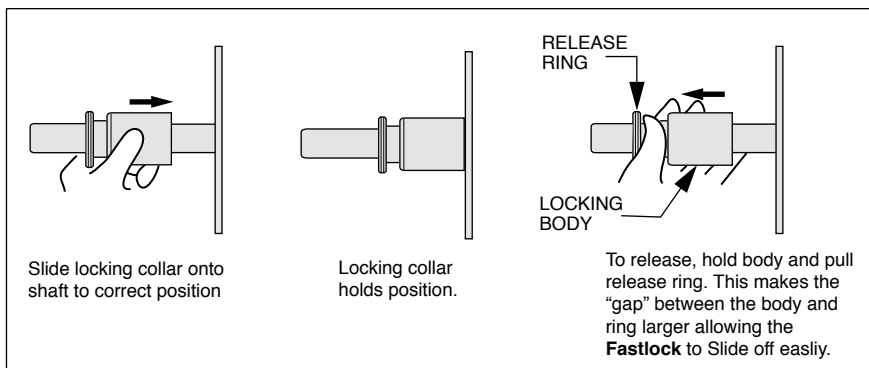
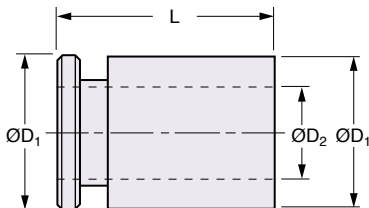
MATERIAL:

- Inner Body** – 303 Stainless Steel
- Outer Sleeve** – 303 Stainless Steel
- Balls** – 440C Stainless Steel
- Spring** – 302 Stainless Steel

Catalog Number	A	B Shaft +0.001 -0.015	C Overall Length	Weight lb.
S25FLY-0250	.73	.250	1.00	.07
S25FLY-0313	.73	.3125	1.00	.07
S25FLY-0375	.85	.375	1.78	.18
S25FLY-0500	1.10	.500		.29
S25FLY-0625	1.10	.625	1.78	.23
S25FLY-0750	1.23	.750		.28
S25FLY-0875	1.45	.875	1.78	.41
S25FLY-1000	1.45	1.000	1.78	.32
S25FLY-1250	2.23	1.250	1.87	1.12
S25FLY-1500	2.23	1.500		.87
S25FLY-1625	2.35	1.625	1.87	.91
S25FLY-1750	2.72	1.750		1.42
S25FLY-2000	2.95	2.000		1.54

■ NO TOOLS NEEDED

■ USABLE FOR NONHARDENED SHAFTS

**MATERIAL:****Inner Body** – 303 Stainless Steel**Outer Sleeve** – 303 Stainless Steel**Balls** – 440C Stainless Steel**Spring** – 302 Stainless Steel

Catalog Number	D ₁	D ₂ Shaft +0.03 -0.35	L Overall Length	Weight kg
S25FLYM0394	22	10		0.08
S25FLYM0591	28	15	45	0.13
S25FLYM0630	28	16		0.12
S25FLYM0787		20		0.22
S25FLYM0866	37	22	45	0.20
S25FLYM0984		25		0.16
S25FLYM1181	50	30	45	0.34
S25FLYM1260	57	32	48	0.52
S25FLYM1380	57	35	48	0.46
S25FLYM1575	60	40	48	0.42