

# ACME LEAD SCREWS



Centerless ground and standard rolled  
2G threadform

PHONE: 516.328.3300 • FAX: 516.326.8827 • WWW.SDP-SI.COM

➤ MATERIAL:

300 Series Stainless Steel

➤ SPECIFICATIONS:

Lead accuracy of  $\pm 0.010$ " per foot.

Straightness of 0.010" per foot.



## INCH COMPONENT CATALOG NUMBER

AB11SA -

Screw Size Code      Length in Feet

Screw Size Code	Screw Size	No. of Starts	Root Dia. in.	Lead in.	Available Lengths ft.
*25201	1/4-20	1	.19	.050	1, 3
*25161	1/4-16			.17	
31082	5/16-8	2	.23	.250	1, 3, 6
31084		4		.500	
31122	5/16-12	2	.167		
*37081	3/8-8	stub	.29	.125	
37084		4	.27	.500	
Δ 37055	3/8-5	5	.24	1.000	
Δ 37045	3/8-4			1.200	
*37101	3/8-10	1	.26	.100	
37102		2		.200	
37114	3/8-11	4	.27	.375	
*37121	3/8-12	1	.28	.083	
37122		2	.31	.167	
*37161	3/8-16	1	.30	.063	
43082	7/16-8	2	.36	.250	2, 4, 6
43084		4		.500	
*50101	1/2-10	1	.39	.100	
50102		2		.200	
*62081	5/8-8	stub	.52	.125	
*62101	5/8-10	1		.100	
62102		2	.200		
*75061	3/4-6	1	.56	.167	
*75081	3/4-8		.61	.125	
*75101	3/4-10		.63	.100	
10005	1-5		.78	.200	
10008	1-8		.86	.125	
10010	1-10		.88	.100	

\*Left-hand threads available on special order.

Δ Fast lead high helix lead screws.

► MATERIAL:

Turcite® X (Acetal, PTFE & Silicone filled)

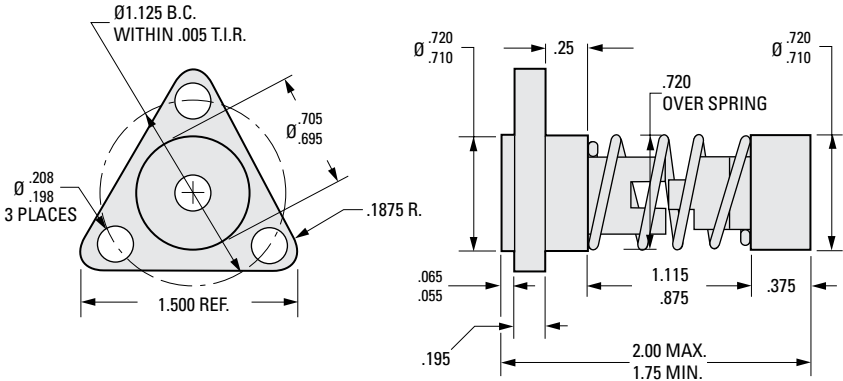
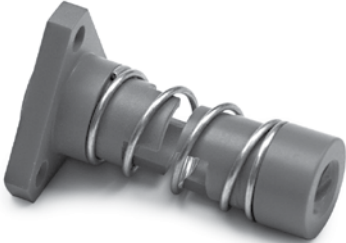
► TEMPERATURE RANGE:

32° F to 160° F

► FEATURES:

Lightweight.  
Low cost.  
Low friction.  
Self-lubricating.  
75,000,000 inches of travel.

PHONE: 516.328.3300 • FAX: 516.326.8827 • WWW.SDP-SI.COM



INCH COMPONENT

Catalog Number*	Screw Size	Number of Starts	Lead in.	Max. Preload lbf	Torque at Max. Preload oz. in.	Max. Load for Zero Backlash lbf
AB24FT-25161AB	1/4-16	1	.063	4.2	3.8	4
AB24FT-25201AB	1/4-20		.050		7.0	
AB24FT-31082AB	5/16-8	2	.250		9.7	
AB24FT-31084AB		4	.500		6.1	
AB24FT-31122AB	5/16-12	2	.167		20.0	
AB24FT-37045AB	3/8-4	5	1.200		5.8	
AB24FT-37081AB	3/8-8	stub	.125		10.6	
AB24FT-37084AB		4	.500		5.8	
AB24FT-37101AB	3/8-10	1	.100		6.6	
AB24FT-37122AB	3/8-12	2	.167		5.9	
AB24FT-37161AB	3/8-16	1	.063		8.6	
AB24FT-43082AB	7/16-8	2	.250		11.4	
AB24FT-43084AB		4	.500			

\* To be discontinued when present stock is depleted.

➤ MATERIAL:

Turcite® X (Acetal, PTFE & Silicone Filled)

PHONE: 516.328.3300 • FAX: 516.326.8827 • WWW.SDP-SI.COM

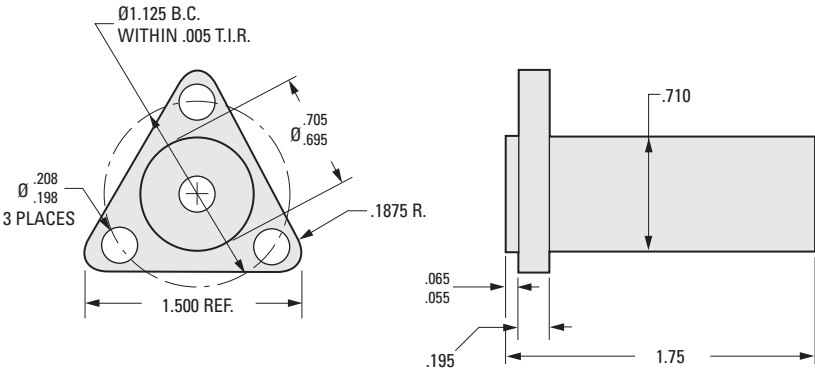
➤ TEMPERATURE RANGE:

32° F to 160° F

➤ FEATURES:

- Lightweight.
- Low cost.
- Low friction.
- Self-lubricating.
- 75,000,000 inches of travel.

Left-hand threads available on special order.



INCH COMPONENT

Catalog Number	Screw Size	Number of Starts	Lead in.	Max. Static Load lbf	Dynamic Load** lbf	Torque to Produce 1 lbf oz. in.
AB23FT-25201	1/4-20	1	.050	125	25	.40
AB23FT-25161	1/4-16		.063			.42
AB23FT-31082	5/16-8	2	.250	250	50	1.02
AB23FT-31084		4	.500			1.75
AB23FT-31122	5/16-12	2	.167	350	70	.79
AB23FT-37081*	3/8-8	stub	.125			.69
AB23FT-37084*		4	.500			1.80
AB23FT-37055	3/8-5	5	1.000			3.45
AB23FT-37045	3/8-4		1.200			4.20
AB23FT-37101	3/8-10	1	.100			.64
AB23FT-37102		2	.200			.92
AB23FT-37114	3/8-11	4	.375			1.42
AB23FT-37121	3/8-12	1	.083			.61
AB23FT-37122		2	.167			.83
AB23FT-37161	3/8-16	1	.063			.58
AB23FT-43082	3/8-8	2	.250			1.14
AB23FT-43084		4	.500			1.85
AB23FT-50042	1/2-4	2				1.91
AB23FT-50101	1/2-10	1	.100			.80
AB23FT-50102		2	.200			1.07

\* Nut has ribbed body shape within the .710 dimensions above.

\*\* Reduce load by 90% for continuous load applications.

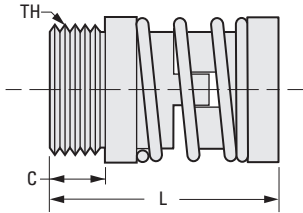
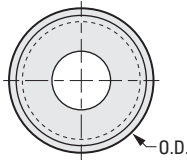
➤ MATERIAL:

Acetal with PTFE

PHONE: 516.328.3300 • FAX: 516.326.8827 • WWW.SDP-SI.COM

➤ TEMPERATURE RANGE:

32° F to 180° F



INCH COMPONENT

Catalog Number	Screw Size	Number of Starts	Lead in.	Efficiency %	O.D.	L	
						Min.	Max.
AB22SN-25161AB	1/4-16	1	.063	48	.625	1.125	1.250
AB22SN-25201AB	1/4-20		.050	41			
AB22SN-31082AB	5/16-8	2	.250	72	.750	1.160	1.340
AB22SN-31084AB		4	.500	80			
AB22SN-31122AB	5/16-12	2	.167	65			
AB22SN-37081AB	3/8-8	stub	.125	53			
AB22SN-37084AB		4	.500	79			
AB22SN-37101AB	3/8-10	1	.100	49			
AB22SN-37102AB		2	.200	65			
AB22SN-37114AB	3/8-11	4	.375	75			
AB22SN-37121AB	3/8-12	1	.083	44			
AB22SN-37122AB		2	.167	60			
AB22SN-37161AB		1	.063	36			

Catalog Number (Ref.)	C	TH	Preload lbf	Design Load lbf	Max. Static Load lbf	Drag Torque oz. in.	Use with Flange
AB22SN-25161AB	.187	9/16-18	1-3	25	225	2-4	AB250F-025
AB22SN-25201AB				350	AB250F-037		
AB22SN-31082AB	50						
AB22SN-31084AB							
AB22SN-31122AB	70						
AB22SN-37081AB							
AB22SN-37084AB							
AB22SN-37101AB							
AB22SN-37102AB							
AB22SN-37114AB							
AB22SN-37121AB							
AB22SN-37122AB							
AB22SN-37161AB							
	.250	5/8-18	2-5				

Continued on the next page

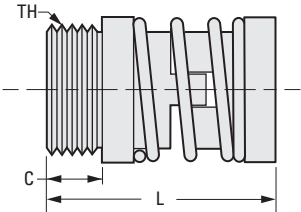
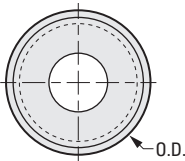
➤ MATERIAL:

Acetal with PTFE

PHONE: 516.328.3300 • FAX: 516.326.8827 • WWW.SDP-SI.COM

➤ TEMPERATURE RANGE:

32° F to 180° F



INCH COMPONENT

Catalog Number	Screw Size	Number of Starts	Lead in.	Efficiency %	O.D.	L	
						Min.	Max.
AB22SN-43082AB	7/16-8	2	.250	65	1.000	1.700	2.000
AB22SN-50042AB	1/2-4		.500	75			
AB22SN-50101AB	1/2-10	1	.100	41			
AB22SN-50102AB		2	.200	57			
AB22SN-62101AB	5/8-10	1	.100	35	1.750	2.500	3.000
AB22SN-62102AB		2	.200	51			
AB22SN-75061AB	3/4-6	1	.167	44			
AB22SN-75081AB	3/4-8		.125	36			
AB22SN-75101AB	3/4-10		.100	31			
AB22SN-10008AB	1-8		.125	29			
AB22SN-10010AB	1-10		.100	25			

Catalog Number (Ref.)	C	TH	Preload lbf	Design Load lbf	Max. Static Load lbf	Drag Torque oz. in.	Use with Flange
AB22SN-43082AB	.375	15/16-16	4-9	100	500	3-5	AB250F-050
AB22SN-50042AB							
AB22SN-50101AB							
AB22SN-50102AB							
AB22SN-62101AB							
AB22SN-62102AB							
AB22SN-75061AB	.600	1-9/6-18	10-20	300	1500	15-20	AB250F-100
AB22SN-75081AB							
AB22SN-75101AB							
AB22SN-10008AB							
AB22SN-10010AB							

Continued from the previous page

➤ MATERIAL:

Acetal with PTFE

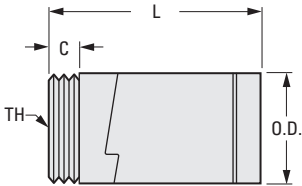
PHONE: 516.328.3300 • FAX: 516.326.8827 • WWW.SDP-SI.COM

➤ TEMPERATURE RANGE:

32° F to 180° F

➤ FEATURES:

Reduced Drag.



INCH COMPONENT

Catalog Number*	Screw Size	Number of Starts	Lead in.	Efficiency %	O.D.	L
AB27SN-31082AB	5/16-8	2	.125	65	.82	1.875
AB27SN-31084AB		4	.500	80		
AB27SN-31122AB	5/16-12	2	.167	72		
AB27SN-37081AB	3/8-8	1	.125	53		
AB27SN-37084AB		4	.500	79		
AB27SN-37102AB	3/8-10	2	.200	65		
AB27SN-37114AB	3/8-11	4	.375	75		
AB27SN-37121AB	3/8-12	1	.500	79		
AB27SN-37122AB		2				
AB27SN-37161AB	3/8-16	1	.063	36		
AB27SN-43082AB	7/16-8	2	.250	65	1.12	2.250
AB27SN-43084AB		4	.500	76		
AB27SN-50102AB	1/2-10	2	.200	57	1.40	2.600
AB27SN-62081AB	5/8-8	1	.125	40		
AB27SN-62101AB	5/8-10	2	.100	35	1.63	2.900
AB27SN-62102AB			.200	51		
AB27SN-75061AB	3/4-6	1	.100	31	1.88	3.000
AB27SN-75081AB	3/4-8		.125	36		
AB27SN-10005AB	1-5		.200	41		
AB27SN-10008AB	1-8		.125	29		
AB27SN-10010AB	1-10		.100	25		

Catalog Number (Ref.)	C	TH	Design Load lbf	Drag Torque oz. in.	Use with Flange
AB27SN-31...	.250	5/8-18	25	1-3	AB250F-037
AB27SN-37...					AB250F-050
AB27SN-43...	.375	15/16-16	125		
AB27SN-50...				.500	
AB27SN-62...	1 3/8-16	250	3-10		AB250F-075
AB27SN-75...				1 9/16-18	
AB27SN-10...	.600				

\* To be discontinued when present stock is depleted.

► **MATERIAL:**

Acetal with PTFE

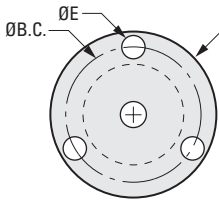
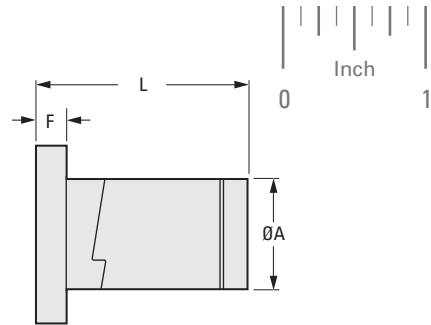
PHONE: 516.328.3300 • FAX: 516.326.8827 • WWW.SDP-SI.COM

► **TEMPERATURE RANGE:**

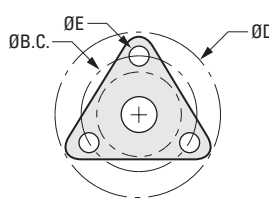
32° F to 180° F

► **FEATURES:**

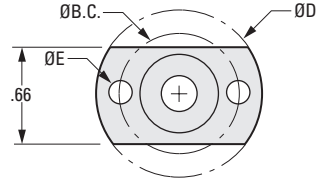
Reduced Drag.



7/16" AND 5/8" SCREWS



5/16" AND 3/8" SCREWS



1/4" SCREW ONLY

**INCH COMPONENT**

Catalog Number	Screw Size	Number of Starts	Lead in.	Efficiency %	O.D.	L Max.
AB27FT-25201AB	1/4-20	1	.050	41	.64	1.180
AB27FT-31084AB	5/16-8	4	.500	80	.82	1.875
AB27FT-31122AB	5/16-12	2	.167	65		
AB27FT-37045AB	3/8-4	5	1.200	82		
AB27FT-37081AB	3/8-8	1	.125	53		
AB27FT-37084AB		4	.500	79		
AB27FT-37101AB	3/8-10	1	.100	49		
AB27FT-37102AB		2	.200	65		
AB27FT-37114AB	3/8-11	4	.375	75		
AB27FT-37121AB	3/8-12	1	.083	44		
AB27FT-37122AB		2	.167	60		
AB27FT-37161AB	3/8-16	1	.063	36	1.12	2.250
AB27FT-43082AB	7/16-8	2	.250	65		
AB27FT-43084AB		4	.500	76		
AB27FT-62081AB	5/8-8	1	.125	40	1.40	2.600
AB27FT-62102AB	5/8-10	2	.200	51		

Catalog Number (Ref.)	D Dia.	E Dia.	F	B.C. Dia.	Design Load lbf	Drag Torque oz. in.
AB27FT-2501AB	1.19	.141	.16	.900	100	<1
AB27FT-31...	1.50	.200	.20	1.125	250	1-3
AB27FT-37...			.30	1.406	125	
AB27FT-43...	1.75	.220	.50	1.688	175	2-6
AB27FT-62...	2.13					

REV: 3.12.14 JC

➤ MATERIAL:

Acetal with PTFE

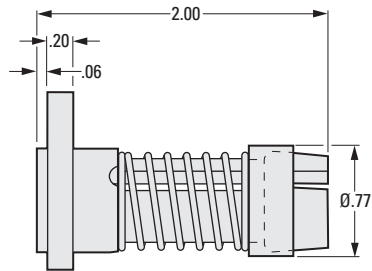
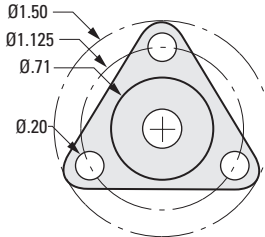
PHONE: 516.328.3300 • FAX: 516.326.8827 • WWW.SDP-SI.COM

➤ TEMPERATURE RANGE:

32° F to 180° F

➤ FEATURES:

- Low cost.
- Low friction.
- Non-corrosive.
- Reduced drag.
- Self-lubricating.



INCH COMPONENT

Catalog Number*	Screw Size	Number of Starts	Lead in.	Efficiency %	Design Load lbf	Drag Torque oz. in.
AB28FT-37045AB	3/8-4	5	1.200	82	10	2-5
AB28FT-37081AB	3/8-8	1	.125	53		
AB28FT-37101AB	3/8-10		.100	49		
AB28FT-37102AB		2	.200	65		
AB28FT-37114AB	3/8-11	4	.364	75		
AB28FT-37121AB	3/8-12	1	.083	44		
AB28FT-37122AB		2	.167	60		
AB28FT-37161AB	3/8-16	1	.063	36		
AB28FT-43084AB	7/16-8	4	.500	76		

\* To be discontinued when present stock is depleted.



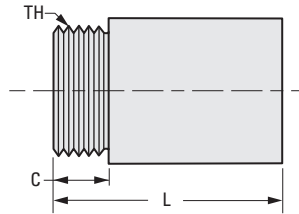
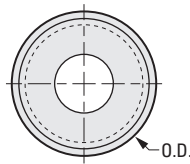
## > MATERIAL:

Acetal with PTFE

PHONE: 516.328.3300 • FAX: 516.326.8827 • WWW.SDP-SI.COM

## > TEMPERATURE RANGE:

32° F to 180° F



## INCH COMPONENT

Catalog Number	Screw Size	Number of Starts	Lead in.	Efficiency %	O.D.	L
AB21SN-25161	1/4-16	1	.063	48	.625	.500
AB21SN-25201	1/4-20		.050	41		
AB21SN-31082	5/16-8	2	.250	72	.750	.750
AB21SN-31084		4	.500	80		
AB21SN-31122	5/16-12	2	.167	65		
AB21SN-37081	3/8-8	stub	.125	53		
AB21SN-37084		4	.500	79		
AB21SN-37101	3/8-10	1	.100	49		
AB21SN-37102		2	.200	65		
AB21SN-37114	3/8-11	4	.375	75		
AB21SN-37121	3/8-12	1	.083	44		
AB21SN-37122		2	.167	60		
AB21SN-37161	3/8-16	1	.063	36		

Catalog Number (Ref.)	C	TH	Design Load lbf	Max. Static Load lbf	Use with Flange
AB21SN-25161	.187	9/16-18	45	225	AB250F-025
AB21SN-25201					
AB21SN-31082	.250	5/8-18	70	350	AB250F-037
AB21SN-31084					
AB21SN-31122					
AB21SN-37081					
AB21SN-37084					
AB21SN-37101					
AB21SN-37102					
AB21SN-37114					
AB21SN-37121					
AB21SN-37122					
AB21SN-37161					

Continued on the next page

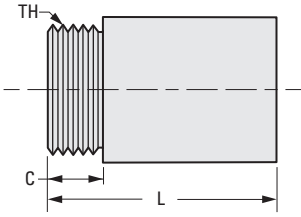
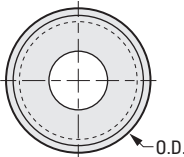
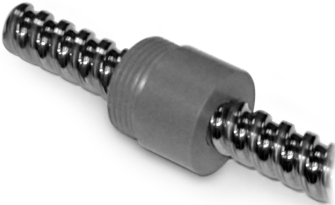
➤ MATERIAL:

Acetal with PTFE

PHONE: 516.328.3300 • FAX: 516.326.8827 • WWW.SDP-SI.COM

➤ TEMPERATURE RANGE:

32° F to 180° F



INCH COMPONENT

Catalog Number	Screw Size	Number of Starts	Lead in.	Efficiency %	O.D.	L
AB21SN-43082	7/16-8	2	.250	65	1.000	1.000
AB21SN-43084		4	.500	76		
AB21SN-50042	1/2-4	2		75		
AB21SN-50101	1/2-10	1	.100	41		
AB21SN-50102		2	.200	57		
AB21SN-62101	5/8-10	1	.100	35		
AB21SN-62102		2	.200	51		
AB21SN-75061	3/4-6	1	.167	44	1.500	1.500
AB21SN-75081	3/4-8		.125	36		
AB21SN-75101	3/4-10		.100	31		
AB21SN-10008	1-8		.125	29		
AB21SN-10010	1-10		.100	25		

Catalog Number (Ref.)	C	TH	Design Load lbf	Max. Static Load lbf	Use with Flange
AB21SN-43082	.375	15/16-16	100	500	AB250F-050
AB21SN-43084					
AB21SN-50042			150	750	
AB21SN-50101					
AB21SN-50102			160	800	
AB21SN-62101	.500	1-3/8-16	300	1500	AB250F-075
AB21SN-62102					
AB21SN-75061			400	2000	
AB21SN-75081					
AB21SN-75101					
AB21SN-10008					
AB21SN-10010					

Continued from the previous page

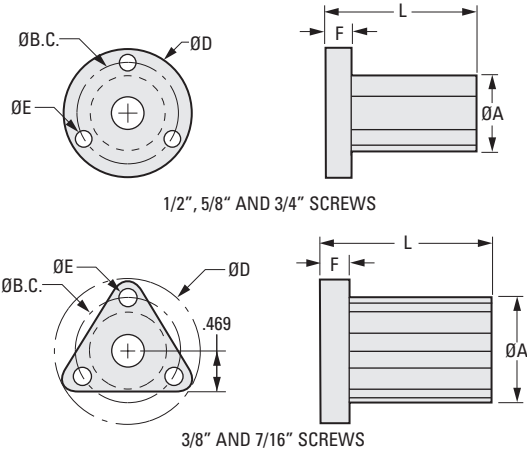
➤ MATERIAL:

Acetal with PTFE

PHONE: 516.328.3300 • FAX: 516.326.8827 • WWW.SDP-SI.COM

➤ TEMPERATURE RANGE:

32° F to 180° F



INCH COMPONENT

Catalog Number	Screw Size	Number of Starts	Lead in.	Efficiency %	Design Load lbf
AB29FT-37045	3/8-4	5	1.200	82	60
AB29FT-37081	3/8-8	1	.125	53	
AB29FT-37102	3/8-10	2	.200	65	
AB29FT-37121	3/8-12	1	.083	44	
AB29FT-37122		2	.167	60	
AB29FT-43082	7/16-8	2	.250	65	75
AB29FT-50102	1/2-10		.200	57	125
AB29FT-62081	5/8-8		.125	40	175
AB29FT-62101	5/8-10	1	.100	35	
AB29FT-75061	3/4-6		.167	44	
AB29FT-75081	3/4-8		.125	36	
AB29FT-75101	3/4-10		.100	31	

Catalog Number (Ref.)	A Dia.	L	D Dia.	E Dia.	F	B.C. Dia.
AB29FT-37...	.71	1.50	1.50	.20	.20	1.125
AB29FT-43...	.75				.25	
AB29FT-50...	.88	1.63			2.00	.30
AB29FT-62...	1.125	1.75	1.438			

REV: 3.12.14 JC

# BRONZE NUTS

**SDP/SI**

PHONE: 516.328.3300 • FAX: 516.326.8827 • WWW.SDP-SI.COM

➤ **MATERIAL:**

Bronze SAE 660

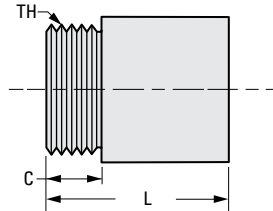
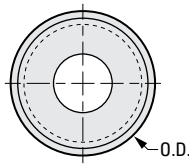
➤ **TEMPERATURE RANGE:**

-65° F to 250° F

➤ **SPECIFICATIONS:**

Friction Coefficient: .2 to .3

Lubrication is recommended.



## INCH COMPONENT

Catalog Number	Screw Size	Number of Starts	Lead in.	Torque to Raise 1 lb. oz. in.	O.D.	L
AB20BN-25201	1/4-20	1	.050	.41	.625	.625
AB20BN-37101	3/8-10		.100	.67	.750	.750
AB20BN-37121	3/8-12		.083	.64		
AB20BN-37161	3/8-16		.063	.61		
AB20BN-50101	1/2-10	2	.100	.83	1.000	1.000
AB20BN-50102	1/2-10	2	.200	1.10		
AB20BN-62081	5/8-8	stub	.125	1.06		
AB20BN-62101	5/8-10	1	.100	.99		
AB20BN-62102	5/8-10	2	.200	1.26	1.500	1.500
AB20BN-75061	3/4-6	1	.167	1.28		
AB20BN-75101	3/4-10		.100	1.15		
AB20BN-10005	1-5		.200	1.67		
AB20BN-10008	1-8		.125	1.52		
AB20BN-10010	1-10		.100	1.47		

Catalog Number (Ref.)	C	TH	Design Load lbf	Max. Static Load lbf	Use with Flange
AB20BN-25...	.187	9/16-18	110	550	AB250F-025
AB20BN-37...	.250	5/8-18	300	1500	AB250F-037
AB20BN-50...	.375	15/16-16	620	3100	AB250F-050
AB20BN-62...			860	4300	
AB20BN-75...	.500	1-3/8-16	1500	1500	AB250F-075
AB20BN-100...			1900	9500	

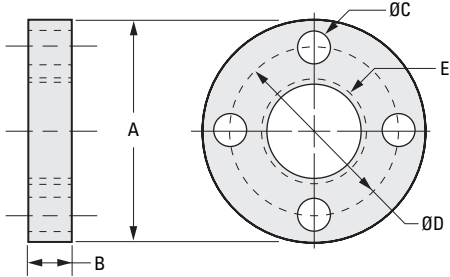
# MOUNTING FLANGES



FOR SUPERNUTS® AND BRONZE NUTS

PHONE: 516.328.3300 • FAX: 516.326.8827 • WWW.SDP-SI.COM

> MATERIAL:  
Aluminum 6062-T6



INCH COMPONENT					
Catalog Number	A	B	C Dia.	D Dia.	E Thread
AB250F-025	1.25	.187	.140	1.00	9/16-18
AB250F-037	1.60	.250	.177	1.24	5/8-18
AB250F-050	2.00	.375	.266	1.50	15/16-16
AB250F-075	2.50	.500		2.00	1 3/8-16
AB250F-100	3.00	.600		2.37	1 9/16-18