

INCH OR METRIC THREADS  
 FOR LOADS OF .5 TO 10 POUNDS (0.25 TO 4.6 kgf)  
 STAINLESS STEEL MESH  
 CORROSIVE ENVIRONMENT



**› MATERIAL:**

- Housing** - Aluminum Alloy, Anodized
- Eyelets** - Brass, Tin Plated
- Isolators** - Stainless Steel Spring and Mesh

**› OPERATING TEMPERATURE:**

-94°F to +347°F (-70°C to +175°C)

**› APPLICATIONS:**

- Aircraft
- Marine
- Mobile
- Rotating Machines

**› WEIGHT:**

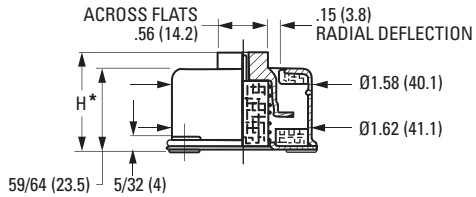
1.4 oz. (0.04 kg) approx.

**› DYNAMIC CHARACTERISTICS:**

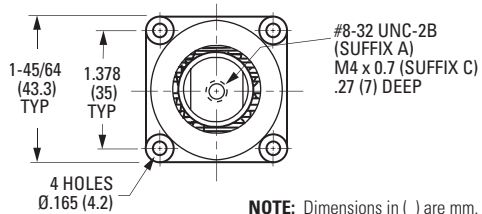
Ratio between transverse and axial stiffness (vertical) approximately 1:2.5  
 Natural frequency = 7 to 11 Hz vertical and 4.5 to 7 Hz transverse depending on load, for a displacement input ± .014 (0.35).  
 Maximum displacement input ± .016 (0.4)  
 Transmissibility ≤ 4:1  
 Conforms to MIL-E-5400

**› LOADING LIMITATIONS:**

Prior to abutting snubber, load corresponding to a continuous acceleration of at least 2 G. Loads corresponding to at least 10 G may be accepted without subsequently affecting the mount performance. Maximum displacement of the suspended unit under limiting loads ± .197 (5).

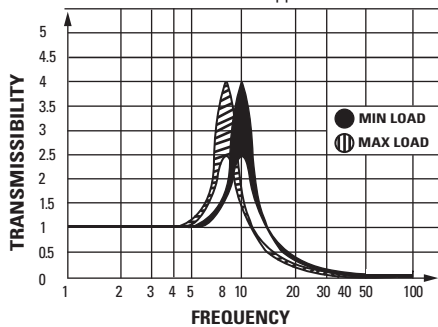


**NOTE:** MAX BOLT LENGTH INTO CAP IS .276 (7)

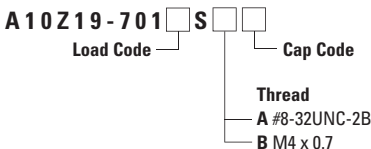


**NOTE:** Dimensions in ( ) are mm.

**TYPICAL TRANSMISSIBILITY CURVE**  
 as a function of applied load



**INCH COMPONENT CATALOG NUMBER**



Load Code	Static Load	
	lb.	kgf
<b>1</b>	.55 – 1.00	0.25 – 0.45
<b>2</b>	.80 – 1.80	0.35 – 0.8
<b>3</b>	1.50 – 3.40	0.7 – 1.5
<b>4</b>	2.20 – 5.60	1 – 2.55
<b>5</b>	5.60 – 10.10	2.55 – 4.6

Cap Code	H* - Height			
	Free		Max. Load	
	in.	mm	in.	mm
<b>S</b> - Short	1.50	38	1.09	27.7
<b>L</b> - Long	1.61	41	1.21	30.7

INCH OR METRIC THREADS  
 FOR LOADS OF 1.5 TO 242 POUNDS (0.7 TO 110 kgf)  
 STAINLESS STEEL MESH  
 CORROSIVE ENVIRONMENT

PHONE: 516.328.3300 • FAX: 516.326.8827 • WWW.SDP-SI.COM



**➤ MATERIAL:**

- Housing** - Aluminum Alloy, Anodized
- Eyelets** - Brass, Tin Plated
- Isolators** - Stainless Steel Spring and Mesh

**➤ OPERATING TEMPERATURE:**

-94°F to +347°F (-70°C to +175°C)

**➤ APPLICATIONS:**

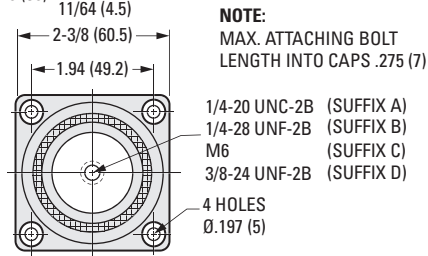
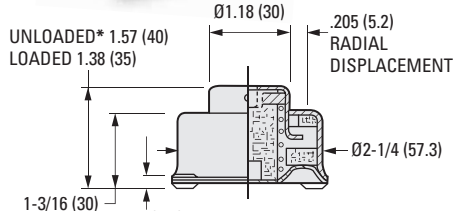
- Aircraft
- Marine
- Mobile
- Rotating Machines

**➤ WEIGHT:**

3.53 to 4.41 oz. (100 to 125 g) approx.

**➤ DYNAMIC CHARACTERISTICS:**

In accordance with curve 1 of spec MIL-C-172.  
 Ratio Between transverse and axial stiffness (vertical): approximately 1:2.5  
 Natural Frequency = 7 to 10 Hz vertical and 4.5 to 6 Hz transverse depending on load for a displacement input of ± .303 (0.75)  
 Maximum displacement input ± .031 (0.8)  
 Transmissibility: ≤ 4:1  
 Conforms to MIL-E-5400C



**NOTE:**

MAX. ATTACHING BOLT LENGTH INTO CAPS. .275 (7)

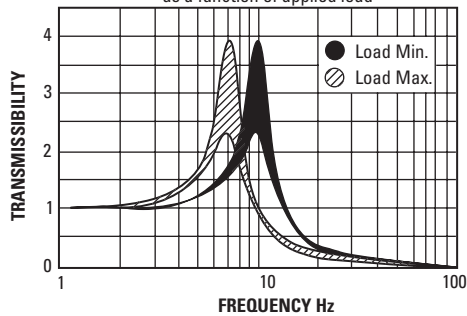
NOTE: Dimensions in ( ) are mm.

**➤ LOADING LIMITATIONS:**

Just prior to abutting snubber, load corresponding to a continuous acceleration of at least 2 G. Loads corresponding to at least 10 G may be accepted without subsequently affecting the mount performance. Maximum displacement of the suspended unit under limiting loads ± .236 (6)

\* Long Cap, unloaded height 1.76 (44.6) loaded height 1.57 (40) available on special request. To order with long cap, add **L** to the end of Catalog Number.

**TYPICAL TRANSMISSIBILITY CURVE**  
 as a function of applied load



**INCH/METRIC COMPONENT**

Catalog Number 1/4-20 UNC-2B	Catalog Number 1/4-28 UNF-2B	Catalog Number M6	Catalog Number 3/8-24 UNF-2B	Static Load	
				lb.	kgf
A10Z22-7201A	A10Z22-7201B	A10Z22M7201C	-	1.55 - 2.75	0.7 - 1.25
A10Z22-7202A	A10Z22-7202B	A10Z22M7202C	-	2.55 - 5.00	1.15 - 2.3
A10Z22-7203A	A10Z22-7203B	A10Z22M7203C	-	4.40 - 9.90	2 - 4.5
A10Z22-7204A	A10Z22-7204B	A10Z22M7204C	-	6.20 - 12.35	2.8 - 5.6
A10Z22-7205A	A10Z22-7205B	A10Z22M7205C	A10Z22-7205D	9.90 - 19.85	4.5 - 9
A10Z22-7206A	A10Z22-7206B	A10Z22M7206C	-	15.40 - 30.85	7 - 14
A10Z22-7207A	A10Z22-7207B	A10Z22M7207C	A10Z22-7207D	17.65 - 39.70	8 - 18
A10Z22-7209A	A10Z22-7209B	A10Z22M7209C	-	35.30 - 48.50	16 - 22
A10Z22-7210A	A10Z22-7210B	A10Z22M7210C	A10Z22-7210D	44.10 - 72.75	20 - 33
A10Z22-7211A	A10Z22-7211B	A10Z22M7211C	A10Z22-7211D	72.75 - 132.30	33 - 60
A10Z22-7212A	A10Z22-7212B	A10Z22M7212C	A10Z22-7212D	132.28 - 242.51	60 - 110

I  
R  
T  
1  
2  
3  
4  
5  
6  
7  
8  
9  
10  
11  
12  
13  
14  
15  
A

INCH OR METRIC THREADS  
 FOR LOADS OF 77 TO 1598 POUNDS (35 TO 725 kgf)  
 STAINLESS STEEL MESH  
 CORROSIVE ENVIRONMENT

PHONE: 516.328.3300 • FAX: 516.326.8827 • WWW.SDP-SI.COM



**> MATERIAL:**

**Housing** - Machined Casting.  
 Center and Cup Washer are  
 Zinc Plated and Gold Passivated Mild Steel  
**Isolators** - Stainless Steel Mesh

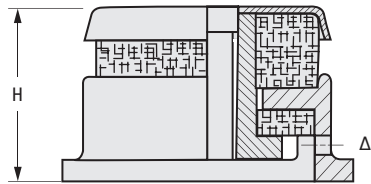
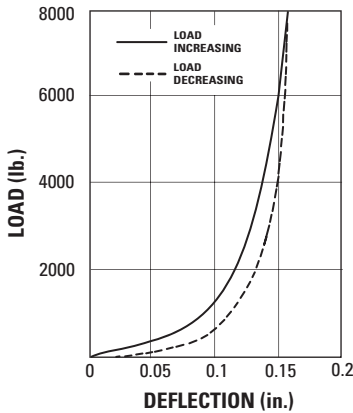
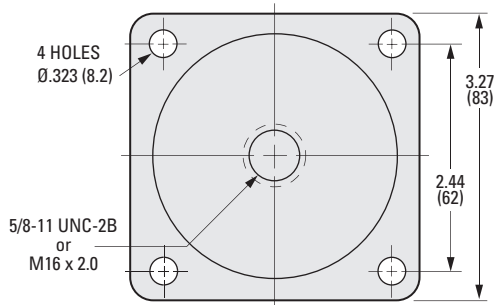
**> OPERATING TEMPERATURE:**

-94°F to +347°F (-70°C to +175°C)

**> APPLICATIONS:**

Primarily developed for heavy-duty applications where severe shock forces are encountered, this mounting is especially recommended for vehicle and marine installation where there is high starting torque or a reversal of loads. It is capable of withstanding compression loads as high as ten times the static loads and is used for isolating marine fans, mobile engines, generators, instrument consoles and general machine tools, such as lathes, milling machines, slotters, broachers, etc.

Δ An access hole is provided to be able to pin the center section for assembling the mounting bolt or to remove rusted bolt.



**NOTE:** Dimensions in ( ) are mm.

INCH COMPONENT	METRIC COMPONENT	Static Load		Natural Frequency Hz	H - Height	
		lb.	kgf		Free	Loaded
Catalog Number 5/8-11 UNC-2B	Catalog Number M16 x 2.0	77 - 396	35 - 180	14 - 22	1-31/32 (50)	1-13/16 (46)
A10Z27-3021A	A10Z27M3021C	308 - 793	140 - 360	14 - 22		
A10Z27-3022A	A10Z27M3022C	606 - 1598	275 - 725	14 - 22		
A10Z27-3023A	A10Z27M3023C					

# LEVELING CARRY MOUNTINGS

**SDP/SI**

FOR LOADS OF 60 TO 100 kgf  
 CASTER TYPE  
 COMPACT & LIGHTWEIGHT DESIGN  
 EXCELLENT STABILITY  
 EASY MOVEMENT & SETTING  
 LOW PRICE

PHONE: 516.328.3300 • FAX: 516.326.8827 • WWW.SDP-SI.COM



**> DESCRIPTION:**

CARRY MOUNT is a moveable mount in which the rubber mount is incorporated into a caster. They allow movement of machines and give excellent vibration-free installations.

**> MATERIAL:**

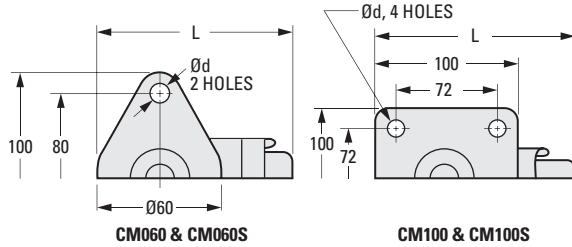
**Frame & Bolt** - Steel, Galvanized  
**Wheel** - Nylon  
**Isolator** - Oil-Resistant Rubber

**> APPLICATIONS:**

Shop Machines  
 Office Equipment  
 Medical Instruments

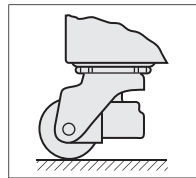
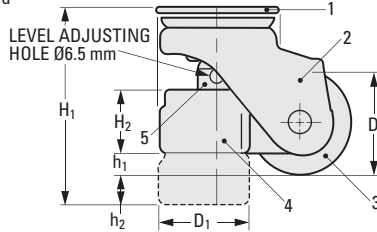
**> INSTALLATION:**

Raise machine and attach casters with suitable bolts. Insert screwdriver or 1/4" diameter rod into level adjusting hole and turn it to the left (clockwise) to lift the rubber mount. Machine can now be easily moved. Once relocated, level adjusting hole is rotated counterclockwise to lift the wheel. The machine is then positioned in place.

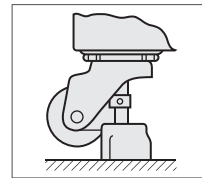


**MOUNTING HOLES**

1. MOUNTING PLATE
2. FRAME
3. WHEEL
4. RUBBER MOUNT
5. LEVELING BOLT & ADJUSTING NUT



**CASTER IN ROLLING POSITION**



**MACHINE LEVELED RUBBER MOUNT EXTENDED**

**METRIC COMPONENT**

Catalog Number	Working Load Max. kgf	H <sub>1</sub>	H <sub>2</sub>	D	D <sub>1</sub>	h <sub>1</sub>	h <sub>2</sub>	d Dia.	L
A10Z43MCM060	60	80	30	50	57	13	15	8.8	95
A10Z43MCM060S	60	70	8.9	50	34	10	16	8.8	96
A10Z43MCM100	100	120	46	75	76	25	17	11	143
A10Z43MCM100S	100	84	8.9	60	34	15	15	11	126

# LEVELING CARRY MOUNTINGS

**SDP/SI**

FOR LOADS OF 200 TO 600 kgf

PHONE: 516.328.3300 • FAX: 516.326.8827 • WWW.SDP-SI.COM

- BALL TYPE
- COMPACT & LIGHTWEIGHT DESIGN
- EXCELLENT STABILITY
- EASY MOVEMENT & SETTING
- LOW PRICE



**> DESCRIPTION:**

CARRY MOUNT is a moveable mount in which the rubber mount is incorporated with a rotating ball. They allow movement of machines and give excellent vibration-free installations.

**> MATERIAL:**

- Spoked Wheel** - Steel, Painted
- Bolt** - Steel, Zinc Plated
- Housing** - Iron, Galvanized
- Ball** - Steel
- Isolator** - Oil-Resistant Rubber

**> APPLICATIONS:**

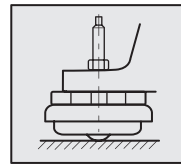
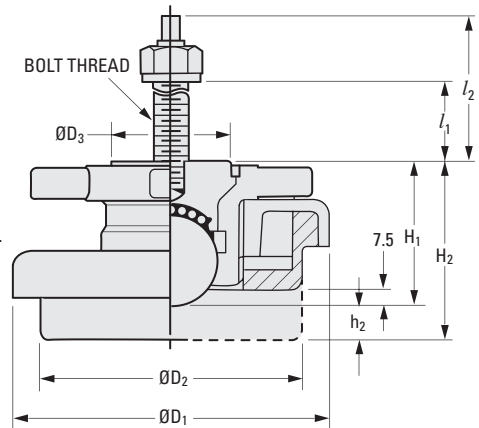
- Shop Machines
- Office Equipment
- Medical Instruments

**> INSTALLATION:**

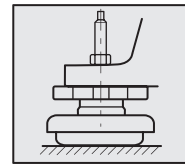
Place the CARRY MOUNT under the bolt hole of the machine. Insert the bolt into the screw hole of the CARRY MOUNT and screw it in until the bolt stops.

Turn the spoked wheel clockwise to lift the rubber mount. The steel ball then allows free movement.

Turn the spoked wheel counterclockwise to lift the steel ball. The rubber mount now supports the machine in place.



MOUNT IN ROLLING POSITION



MACHINE LEVELED RUBBER PAD EXTENDED

**METRIC COMPONENT**

Catalog Number	Working Load Max. kgf	H <sub>1</sub>	H <sub>2</sub>	D <sub>1</sub> Dia. ± 2	D <sub>2</sub> Dia.	D <sub>3</sub> Dia.	l <sub>1</sub>	l <sub>2</sub>	h <sub>2</sub>	Bolt Thread
A10Z44MCM200	200	58	70	100	80	44	67	92	12	M12
A10Z44MCM600	600	65	79	140	120	54	72	102	14	M14