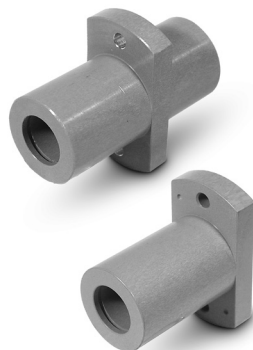
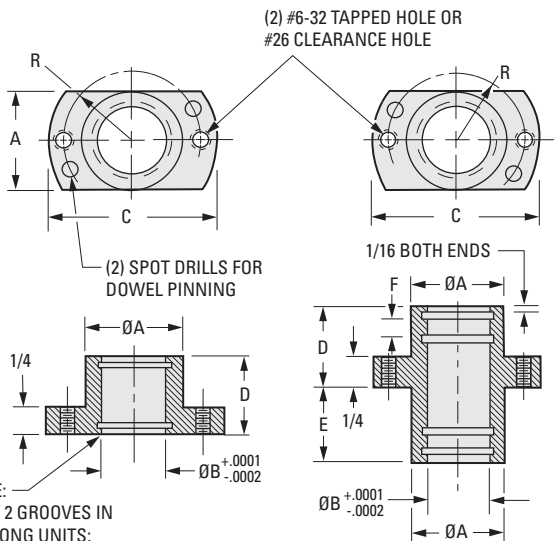
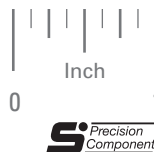


> MATERIAL:

Aluminum, Chromic Anodized

PHONE: 516.328.3300 • FAX: 516.326.8827 • WWW.SDP-SI.COM



NOTE:
ONLY 2 GROOVES IN
3/4" LONG UNITS;
4 GROOVES IN ALL OTHERS

Fig. 1
Single Hub

Fig. 2
Double Hub

INCH COMPONENT

Catalog Number		B Dia.	D	E	A Dia.	C	R	F
Clearance Hole	Tapped Hole							
Fig. 1 Single Hub								
S61AA3-SHH0812	S61AA3-SHH0812T	.5000	3/4	—	7/8	1-5/8	.625	.260
S61AA3-SHH0816	S61AA3-SHH0816T		1					
S61AA3-SHH0824	S61AA3-SHH0824T		1-1/2					
S61AA3-SHH1012	S61AA3-SHH1012T	.6250	3/4	—	15/16	1-3/4	.687	.260
S61AA3-SHH1016	S61AA3-SHH1016T		1					
S61AA3-SHH1024	S61AA3-SHH1024T		1-1/2					
Fig. 2 Double Hub								
S61AA3-DHH0624	S61AA3-DHH0624T	.3750	3/4	3/4	3/4	1-1/2	.562	.187
S61AA3-DHH0832	S61AA3-DHH0832T	.5000	1	1	7/8	1-5/8	.625	.260
S61AA3-DHH0848	S61AA3-DHH0848T		1-1/2	1-1/2				

BEARING MOUNTING PLATES

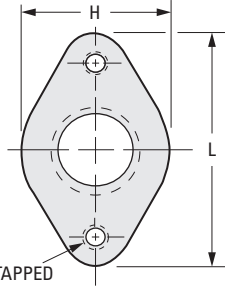
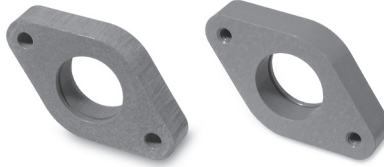


> MATERIAL:

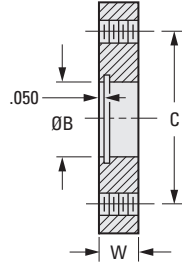
Cast Aluminum, Chromic Anodized

PHONE: 516.328.3300 • FAX: 516.326.8827 • WWW.SDP-SI.COM

Anodized thread is optional.



* (2) T" TAPPED
OR CL. HOLES



INCH COMPONENT									
Catalog Number		Shaft Size	B Dia. +.0001 -.0002	C	H	L	W	T Holes *	
Clearance Hole	Tapped Hole							Tap	Cl. Drill
S61PA1-BMP0604	S61PA1-BMP0604T	1/8	.3750	.875	3/4	1-3/16	.250	#2-56	#41
S61PA1-BMP0805	S61PA1-BMP0805T	3/16	.5000	1.250	7/8	1-5/8	.312	#4-40	#31
S61PA1-BMP1005	S61PA1-BMP1005T	1/4	.6250	1.375	1	1-3/4		#6-32	#26



FLANGE HOUSINGS

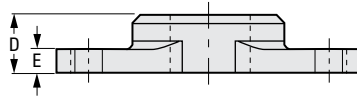
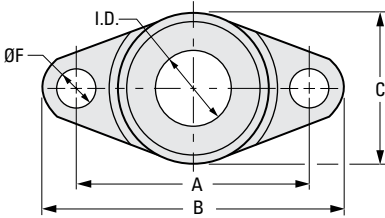


ECONOMICAL
SUITABLE FOR ADDITIONAL MACHINING
CAN BE USED FOR A WIDE RANGE OF COMPONENTS

PHONE: 516.328.3300 • FAX: 516.326.8827 • WWW.SDP-SI.COM



> MATERIAL:
Sintered Aluminum



- I
- R
- T
- 1
- 2
- 3
- 4
- 6
- 7
- 8
- 9
- 10
- 11
- 12
- 13
- 14
- 15
- 16

NEW

INCH COMPONENT

Catalog Number	I.D. +.003 -.000	A	B	C	D	E	F Dia.
A 7Z27-F050	.500	1.250	1.625	.750	3/8	.1875	11/64
A 7Z27-F063	.625	1.750	2.250	1.125	7/16	.1875	9/32
A 7Z27-F081	.812	2.500	3.250	1.625	5/8	.2500	13/32
A 7Z27-F125	1.250	3.125	4.000	1.875	5/8	.3125	13/32
A 7Z27-F158	1.580	4.000	5.000	2.625	29/32	.3750	9/16