

# BORE REDUCERS



INCH TO INCH REDUCTION

PHONE: 516.328.3300 • FAX: 516.326.8827 • WWW.SDP-SI.COM

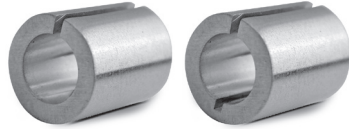


**> MATERIAL:**

Aluminum

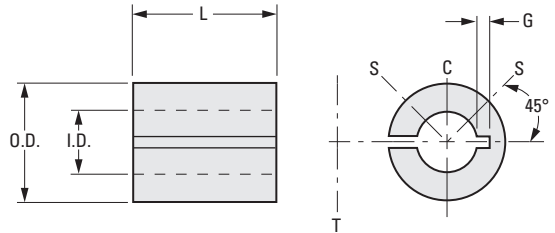
**> INSTALLATION RECOMMENDATIONS:**

- S = set screw positions in hub
- C = for single set screw fastening
- T = for tangential screw in clamp hub



**> SPECIFICATIONS:**

Bore reducers with thicker walls may have a slot extending into opposite wall for additional flexibility. O.D. and I.D. tolerances are maintained before slitting.



**INCH COMPONENT**

Catalog Number	O.D. +.0005 -.0010	I.D. +.001 -.000	G Groove Depth	L
A 7A30-251203	.2500	.1250	.025	3/8
A 7A30-251204	.2500	.1250	.025	1/2
A 7A30-251205	.2500	.1250	.025	5/8
A 7A30-251803	.2500	.1875	—	3/8
A 7A30-251804	.2500	.1875	—	1/2
A 7A30-251805	.2500	.1875	—	5/8
A 7A30-311803	.3125	.1875	.025	3/8
A 7A30-311804	.3125	.1875	.025	1/2
A 7A30-311805	.3125	.1875	.025	5/8
A 7A30-311806	.3125	.1875	.025	3/4
A 7A30-311807	.3125	.1875	.025	7/8
A 7A30-312503	.3125	.2500	—	3/8
A 7A30-312504	.3125	.2500	—	1/2
A 7A30-312505	.3125	.2500	—	5/8
A 7A30-312506	.3125	.2500	—	3/4
A 7A30-312507	.3125	.2500	—	7/8
A 7A30-372504	.3750	.2500	—	1/2
A 7A30-372505	.3750	.2500	—	5/8
A 7A30-372506	.3750	.2500	—	3/4
A 7A30-372507	.3750	.2500	.025	7/8
A 7A30-372508	.3750	.2500	.025	1
A 7A30-373104	.3750	.3125	—	1/2
A 7A30-373105	.3750	.3125	—	5/8
A 7A30-373106	.3750	.3125	—	3/4

Catalog Number	O.D. +.0005 -.0010	I.D. +.001 -.000	G Groove Depth	L
A 7A30-373107	.3750	.3125	—	7/8
A 7A30-373108	.3750	.3125	—	1
A 7A30-503104	.5000	.3125	.035	1/2
A 7A30-503105	.5000	.3125	.035	5/8
A 7A30-503106	.5000	.3125	.035	3/4
A 7A30-503107	.5000	.3125	.035	7/8
A 7A30-503108	.5000	.3125	.035	1
A 7A30-503704	.5000	.3750	—	1/2
A 7A30-503705	.5000	.3750	—	5/8
A 7A30-503706	.5000	.3750	—	3/4
A 7A30-503707	.5000	.3750	—	7/8
A 7A30-503708	.5000	.3750	—	1
A 7A30-503710	.5000	.3750	—	1-1/4
A 7A30-623104	.6250	.3125	.035	1/2
A 7A30-623105	.6250	.3125	.035	5/8
A 7A30-623106	.6250	.3125	.035	3/4
A 7A30-623107	.6250	.3125	.035	7/8
A 7A30-623108	.6250	.3125	.035	1
A 7A30-623110	.6250	.3125	.035	1-1/4
A 7A30-623704	.6250	.3750	—	1/2
A 7A30-623705	.6250	.3750	—	5/8
A 7A30-623706	.6250	.3750	—	3/4
A 7A30-623707	.6250	.3750	—	7/8
A 7A30-623708	.6250	.3750	—	1
A 7A30-623710	.6250	.3750	—	1-1/4

# BORE REDUCERS



INCH TO METRIC REDUCTION

PHONE: 516.328.3300 • FAX: 516.326.8827 • WWW.SDP-SI.COM

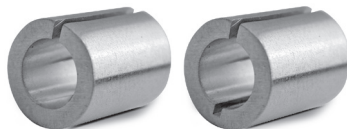


**> MATERIAL:**

Aluminum or Brass where noted\*

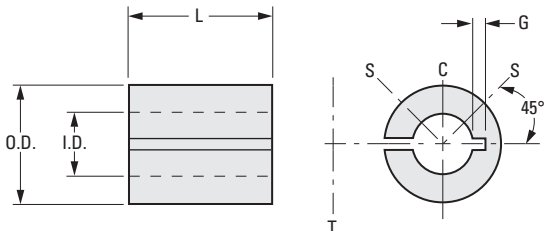
**> INSTALLATION RECOMMENDATIONS:**

- S = set screw positions in hub
- C = for single set screw fastening
- T = for tangential screw in clamp hub



**> SPECIFICATIONS:**

Bore reducers with thicker walls may have a slot extending into opposite wall for additional flexibility. O.D. and I.D. tolerances are maintained before slitting.



**INCH COMPONENT**

Catalog Number	O.D. +.0005 -.0010 in.	I.D. +0.025 0 mm	G Groove Depth in.	L in. (mm)
A 7A30-250309	.2500	3	.025	.354 (9)
A 7A30-250312	.2500	3	.025	.472 (12)
A 7A30-250409	.2500	4	—	.354 (9)
A 7A30-250412	.2500	4	—	.472 (12)
A 7A30-250416	.2500	4	—	.625 (16)
A 7A30-250509	.2500	5	—	.354 (9)
A 7A30-250512	.2500	5	—	.472 (12)
A 7A30-250516	.2500	5	—	.625 (16)
A 7A30-250519	.2500	5	—	.750 (19)
*A 7B30-250609	.2500	6	—	.354 (9)
*A 7B30-250612	.2500	6	—	.472 (12)
*A 7B30-250616	.2500	6	—	.625 (16)
*A 7B30-250619	.2500	6	—	.750 (19)
*A 7B30-250622	.2500	6	—	.865 (22)
A 7A30-310609	.3125	6	—	.354 (9)
A 7A30-310612	.3125	6	—	.472 (12)
A 7A30-310616	.3125	6	—	.625 (16)
A 7A30-310619	.3125	6	—	.750 (19)
A 7A30-310622	.3125	6	—	.865 (22)
A 7A30-370512	.3750	5	.035	.472 (12)
A 7A30-370612	.3750	6	.035	.472 (12)
A 7A30-370616	.3750	6	.035	.625 (16)
A 7A30-370619	.3750	6	.035	.750 (19)
A 7A30-370622	.3750	6	.035	.865 (22)
A 7A30-370812	.3750	8	—	.472 (12)
A 7A30-370816	.3750	8	—	.625 (16)

Catalog Number	O.D. +.0005 -.0010 in.	I.D. +0.025 0 mm	G Groove Depth in.	L in. (mm)
A 7A30-370819	.3750	8	—	.750 (19)
A 7A30-370822	.3750	8	—	.865 (22)
A 7A30-500812	.5000	8	.035	.472 (12)
A 7A30-500816	.5000	8	.035	.625 (16)
A 7A30-500819	.5000	8	.035	.750 (19)
A 7A30-500822	.5000	8	.035	.865 (22)
A 7A30-501012	.5000	10	—	.472 (12)
A 7A30-501016	.5000	10	—	.625 (16)
A 7A30-501019	.5000	10	—	.750 (19)
A 7A30-501022	.5000	10	—	.865 (22)
A 7A30-501212	.5000	12	—	.472 (12)
A 7A30-501216	.5000	12	—	.625 (16)
A 7A30-501219	.5000	12	—	.750 (19)
A 7A30-501222	.5000	12	—	.865 (22)
A 7A30-621012	.6250	10	.035	.472 (12)
A 7A30-621016	.6250	10	.035	.625 (16)
A 7A30-621019	.6250	10	.035	.750 (19)
A 7A30-621022	.6250	10	.035	.865 (22)
A 7A30-621212	.6250	12	—	.472 (12)
A 7A30-621216	.6250	12	—	.625 (16)
A 7A30-621219	.6250	12	—	.750 (19)
A 7A30-621222	.6250	12	—	.865 (22)
A 7A30-621412	.6250	14	—	.472 (12)
A 7A30-621416	.6250	14	—	.625 (16)
A 7A30-621419	.6250	14	—	.750 (19)
A 7A30-621422	.6250	14	—	.865 (22)

NOTE: Dimensions in ( ) are metric sizes.

\* Brass