

ONE- AND TWO-PIECE CLAMP-TYPE COLLARS

SDP/SI

EASY INSTALLATION
WON'T MAR SHAFT

PHONE: 516.328.3300 • FAX: 516.326.8827 • WWW.SDP-SI.COM

► MATERIAL:

304 Stainless Steel

► SPECIFICATION:

Shaft Tolerance:

- 3 mm 0/-0.007
- 4 to 6 mm 0/-0.012
- 8 & 10 mm 0/-0.015
- 12 to 18 mm 0/-0.018
- 20 & 25 mm 0/-0.021

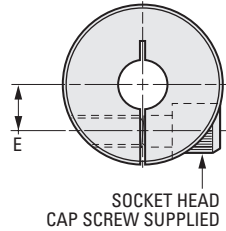
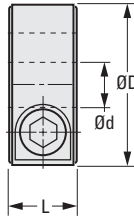


Fig. 1
One-Piece Clamp

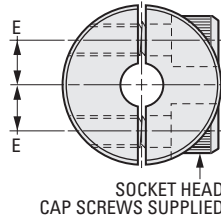
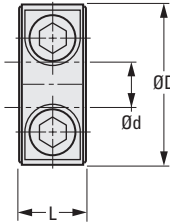


Fig. 2
Two-Piece Clamp

The projections shown are per ISO convention.

METRIC COMPONENT

Catalog Number		Shaft Size h7	d Bore	D Dia. ± 0.1	L ± 0.1	E	Set Screw	Weight g	
Fig. 1 One-Piece Clamp	Fig. 2 Two-Piece Clamp							Fig. 1	Fig. 2
S25NSCM1S0308	S25NSCM2S0308	3	3	15	8	4.5	M3	9	9
S25NSCM1S0408	S25NSCM2S0408	4	4	15	8	4.5	M3	9	9
S25NSCM1S0508	S25NSCM2S0508	5	5	20	8	5.5	M3	16	16
S25NSCM1S0608	S25NSCM2S0608	6	6	20	8	6	M3	16	16
S25NSCM1S0808	S25NSCM2S0808	8	8	25	8	8	M3	24	24
S25NSCM1S1010	S25NSCM2S1010	10	10	30	10	9	M4	44	42
S25NSCM1S1210	S25NSCM2S1210	12	12	30	10	10	M4	42	40
S25NSCM1S1310	S25NSCM2S1310	13	13	30	10	10	M4	40	38
S25NSCM1S1512	S25NSCM2S1512	15	15	35	12	12	M5	68	66
S25NSCM1S1612	S25NSCM2S1612	16	16	35	12	12	M5	66	64
S25NSCM1S1715	S25NSCM2S1715	17	17	40	15	13	M6	108	102
S25NSCM1S1815	S25NSCM2S1815	18	18	45	15	15	M6	140	132
S25NSCM1S2015	S25NSCM2S2015	20	20	45	15	15	M6	144	129
S25NSCM1S2515	S25NSCM2S2515	25	25	50	15	18	M6	164	155



PADDED ONE-PIECE CLAMP-TYPE COLLARS

SDP/SI

SHOCK-ABSORBING PAD
WON'T MAR SHAFT

PHONE: 516.328.3300 • FAX: 516.326.8827 • WWW.SDP-SI.COM

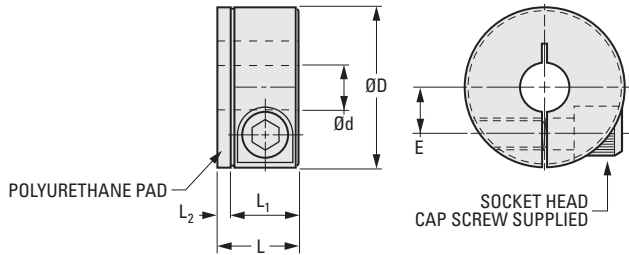


> MATERIAL:

Body - Carbon Steel, Black Chromate Finish
or 304 Stainless Steel
Pad - Polyurethane

> SPECIFICATION:

Shaft Tolerance:
3 mm 0/-0.007
4 to 6 mm 0/-0.012
8 & 10 mm 0/-0.015
12 to 18 mm 0/-0.018
20 & 25 mm 0/-0.021



The projections shown are per ISO convention.

METRIC COMPONENT

Catalog Number *		Shaft Size h7	d Bore	D Dia. ± 0.1	L	L ₁ ± 0.1	L ₂	E	Screw Size	Weight g
Carbon Steel	Stainless Steel									
S25NSPM1C0310	S25NSPM1S0310	3	3	15	10	8	2	4.5	M3	2.8
S25NSPM1C0410	S25NSPM1S0410	4	4	15	10	8	2	4.5	M3	2.7
S25NSPM1C0512	S25NSPM1S0512	5	5	20	12	10	2	6	M4	4.8
S25NSPM1C0612	S25NSPM1S0612	6	6	20	12	10	2	6	M4	4.7
S25NSPM1C0818	S25NSPM1S0818	8	8	30	18	15	3	9	M6	16
S25NSPM1C1018	S25NSPM1S1018	10	10	35	18	15	3	10	M6	22
S25NSPM1C1218	S25NSPM1S1218	12	12	35	18	15	3	11	M6	21
S25NSPM1C1318	S25NSPM1S1318	13	13	35	18	15	3	11	M6	20
S25NSPM1C1518	S25NSPM1S1518	15	15	40	18	15	3	13	M6	27
S25NSPM1C1618	S25NSPM1S1618	16	16	40	18	15	3	13	M6	26
S25NSPM1C1718	S25NSPM1S1718	17	17	40	18	15	3	13	M6	25
S25NSPM1C1818	S25NSPM1S1818	18	18	45	18	15	3	15	M6	33
S25NSPM1C2020	S25NSPM1S2020	20	20	45	20	15	5	15	M6	52
S25NSPM1C2520	S25NSPM1S2520	25	25	50	20	15	5	18	M6	61

* To be discontinued when present stock is depleted.

I

R

T

1

2

3

4

5

6

7

8

9

10

11

12

13

14

15

A

PADDED TWO-PIECE CLAMP-TYPE COLLARS

SDP/SI

SHOCK-ABSORBING PAD
EASY INSTALLATION
WON'T MAR SHAFT

PHONE: 516.328.3300 • FAX: 516.326.8827 • WWW.SDP-SI.COM

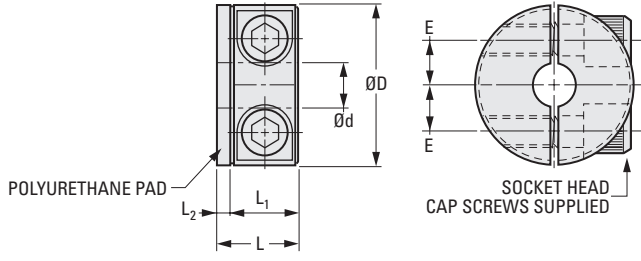


> MATERIAL:

Body - Carbon Steel, Black Chromate Finish
Pad - Polyurethane

> SPECIFICATION:

Shaft Tolerance:
8 & 10 mm 0/-0.015
12 & 15 mm 0/-0.018
20 & 25 mm 0/-0.021



The projections shown are per ISO convention.

METRIC COMPONENT

Catalog Number *	Shaft Size h7	d Bore	D Dia. ± 0.1	L	L ₁ ± 0.1	L ₂	E	Screw Size	Weight g
S25NSPM2C0818	8	8	30	18	15	3	9	M6	15
S25NSPM2C1018	10	10	35	18	15	3	10	M6	21
S25NSPM2C1218	12	12	35	18	15	3	11	M6	20
S25NSPM2C1518	15	15	40	18	15	3	13	M6	25
S25NSPM2C2020	20	20	45	20	15	5	15	M6	30
S25NSPM2C2520	25	25	50	20	15	5	18	M6	35

* To be discontinued when present stock is depleted.

