

20 mm DIAMETER

PHONE: 516.328.3300 • FAX: 516.326.8827 • WWW.SDP-SI.COM

➤ **MATERIAL:**

- Housing - Zinc Die Cast
- Flange - Machined Aluminum
- Shafts & Gears - Steel
- Bearings - Bronze

➤ **OPERATING TEMPERATURE:**

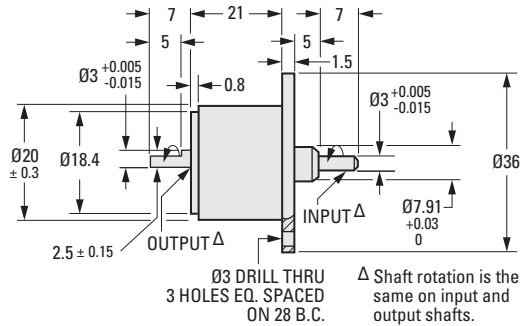
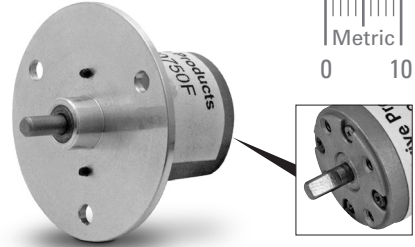
-10°C to +60°C

➤ **SPECIFICATIONS:**

- Radial Play of Shaft: ≤ 0.1 mm
- Thrust Play of Shaft: ≤ 0.18 mm
- Backlash: 2° at output shaft

➤ **WEIGHT:**

20 g



METRIC COMPONENT

Catalog Number **	Ratio to 1	Input Pinion Code*	Efficiency %	Maximum Torque N • mm (oz. in.)	
				Continuous	Momentary
Speed Reducers with Flat					
A 2210M0005F	5	2	81	9.8 (1.4)	49 (6.9)
A 2210M0010F	10	1	81	9.8 (1.4)	49 (6.9)
A 2210M0015F	15	3	66	9.8 (1.4)	49 (6.9)
A 2210M0020F	20	2	66	9.8 (1.4)	49 (6.9)
A 2210M0025F	25	2	68	15 (2.1)	74 (10.5)
A 2210M0030F	30	3	68	15 (2.1)	74 (10.5)
A 2210M0040F	40	3	68	15 (2.1)	74 (10.5)
A 2210M0045F	45	3	68	15 (2.1)	74 (10.5)
A 2210M0050F	50	2	66	20 (2.8)	98 (13.9)
A 2210M0060F	60	2	66	20 (2.8)	98 (13.9)
A 2210M0075F	75	1	66	20 (2.8)	98 (13.9)
A 2210M0100F	100	2	53	29 (4.1)	147 (20.8)
A 2210M0120F	120	3	53	29 (4.1)	147 (20.8)
A 2210M0180F	180	3	53	29 (4.1)	147 (20.8)
A 2210M0200F	200	3	53	29 (4.1)	147 (20.8)
A 2210M0250F	250	2	53	29 (4.1)	147 (20.8)
A 2210M0300F	300	2	53	49 (6.9)	245 (34.7)
A 2210M0360F	360	2	53	49 (6.9)	245 (34.7)
A 2210M0450F	450	1	53	49 (6.9)	245 (34.7)
A 2210M0500F	500	1	53	49 (6.9)	245 (34.7)
A 2210M0750F	750	1	53	49 (6.9)	245 (34.7)
A 2210M1000F	1000	1	53	49 (6.9)	245 (34.7)
A 2210M1500F	1500	3	48	49 (6.9)	245 (34.7)
A 2210M1800F	1800	3	48	49 (6.9)	245 (34.7)
A 2210M3000F	3000	2	48	49 (6.9)	245 (34.7)
A 2210M4000F	4000	2	48	49 (6.9)	245 (34.7)
A 2210M6000F	6000	3	48	49 (6.9)	245 (34.7)

* See pages 11-7 for pinion.

** To be discontinued when present stock is depleted.

27 mm DIAMETER

PHONE: 516.328.3300 • FAX: 516.326.8827 • WWW.SDP-SI.COM

> MATERIAL:

- Housing** - Zinc Die Cast
- Flange** - Machined Aluminum
- Shafts & Gears** - Steel
- Bearings** - Bronze

> OPERATING TEMPERATURE:

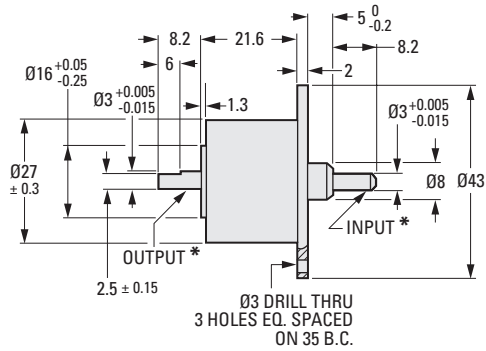
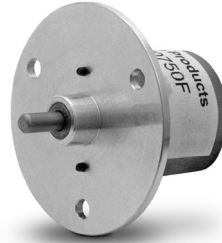
-10°C to +60°C

> SPECIFICATIONS:

- Radial Play of Shaft:** ≤ 0.1 mm
- Thrust Play of Shaft:** ≤ 0.18 mm
- Backlash:** 1-1/2° at output shaft

> WEIGHT:

40 g



METRIC COMPONENT

Catalog Number **	Ratio to 1	Efficiency %	Maximum Torque N • mm (oz. in.)	
			Continuous	Momentary
Speed Reducers with Flat				
A 2Z13M0005F	5	81	9.8 (1.4)	49 (6.9)
A 2Z13M0008F	8	81	9.8 (1.4)	49 (6.9)
A 2Z13M0010F	10	81	9.8 (1.4)	49 (6.9)
A 2Z13M0020F	20	66	14.7 (2.1)	73.5 (10.4)
A 2Z13M0025F	25	66	14.7 (2.1)	73.5 (10.4)
A 2Z13M0030F	30	66	19.6 (2.8)	98.1 (13.9)
A 2Z13M0040F	40	66	19.6 (2.8)	98.1 (13.9)
A 2Z13M0050F	50	66	39.2 (5.6)	196 (27.8)
A 2Z13M0060F	60	66	39.2 (5.6)	196 (27.8)
A 2Z13M0075F	75	66	39.2 (5.6)	196 (27.8)
A 2Z13M0080F	80	66	39.2 (5.6)	196 (27.8)
A 2Z13M0090F	90	66	39.2 (5.6)	196 (27.8)
A 2Z13M0100F	100	66	58.8 (8.3)	294.2 (41.7)
A 2Z13M0120F	120	66	58.8 (8.3)	294.2 (41.7)
A 2Z13M0150F	150	66	58.8 (8.3)	294.2 (41.7)
A 2Z13M0200F	200	53	58.8 (8.3)	294.2 (41.7)
A 2Z13M0300F	300	53	98.1 (13.9)	490 (69.4)
A 2Z13M0500F	500	53	98.1 (13.9)	490 (69.4)
A 2Z13M0600F	600	53	98.1 (13.9)	490 (69.4)
A 2Z13M0750F	750	53	98.1 (13.9)	490 (69.4)
A 2Z13M1000F	1000	53	98.1 (13.9)	490 (69.4)
A 2Z13M1200F	1200	53	98.1 (13.9)	490 (69.4)
A 2Z13M1500F	1500	53	98.1 (13.9)	490 (69.4)
A 2Z13M2000F	2000	43	58.8 (8.3)	294.2 (41.7)
A 2Z13M3000F	3000	43	58.8 (8.3)	294.2 (41.7)
A 2Z13M3600F	3600	43	58.8 (8.3)	294.2 (41.7)
A 2Z13M6000F	6000	43	58.8 (8.3)	294.2 (41.7)

* Shaft rotation is the same on input and output shaft.
 ** To be discontinued when present stock is depleted.

- I
- R
- T
- 1
- 2
- 3
- 4
- 5
- 6
- 7
- 8
- 9
- 10
- 11
- 12
- 13
- 14
- 15
- A