
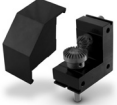













0 10

Catalog Series	Material	Ratios	Pages
 S99RD1MBE...-1	Economy Series Right Angle Bevel Gear Drives AISI 1045 Steel Gears	1:1	12-2
 S99RD1MBE...-2	Economy Series Right Angle Bevel Gear Drives AISI 1045 Steel Gears	2:1	12-3
 A 2Z20M.C...	Right Angle Bevel Gear Drives Hardened Steel Gears Steel Ball Bearings	1:1	12-4
 A 2Z21M.M...	Right Angle Bevel Gear Drives Molded Nylon Gears Sintered Bronze Bearings	1:1 and 2:1	12-5
 A 2Z21M.C...	Right Angle Bevel Gear Drives Case-Hardened Steel Gears Precision Grade Steel Ball Bearings and Sintered Bronze Bearings	1:1, 2:1 and 3:1	12-6
 A 2Z27MC... A 2Z28MC... A 2Z29MC...	Precision Quality Right Angle Bevel Gear Drives SAE 4340 Steel Miter Gears Sealed Ball Bearings	1:1	12-7
 S991LYM...	Heavy-Duty "L" Gear Drives Case-Hardened Alloy Steel Spiral Bevel Gears	1:1 and 2:1	12-9
 S991TYM...	Heavy-Duty "T" Gear Drives Case-Hardened Alloy Steel Spiral Bevel Gears	1:1 and 2:1	12-10



Catalog Series	Material	Ratios	Pages
 <p>A 2Z17M... A 2Z18M... A 2Z19M...</p>	<p>Precision Quality Worm Gear Speed Reducers Hardened Carbon Steel Worms and Phosphor Bronze Worm Wheels Precision Ball Bearings and Self-Lubricating Bearings</p>	<p>6:1 thru 100:1</p>	<p>12-11 thru 12-13</p>
 <p>A 2Z22M...</p>	<p>Base-Mounted Right Angle Helical Gear Speed Reducers Hardened Steel Helical Gears</p>	<p>1:1 thru 25:1</p>	<p>12-14</p>
 <p>A 2Z23M...</p>	<p>Panel-Mounted Right Angle Helical Gear Speed Reducers Hardened Steel Helical Gears</p>	<p>1:1 thru 25:1</p>	<p>12-15</p>

I

R

T

1

2

3

4

5

6

7

8

9

10

11

12

13

14

15

A

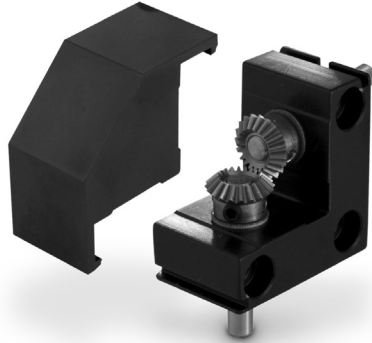
1:1 RATIO
 RATED SPEEDS UP TO 500 RPM
 ECONOMY SERIES

PHONE: 516.328.3300 • FAX: 516.326.8827 • WWW.SDP-SI.COM



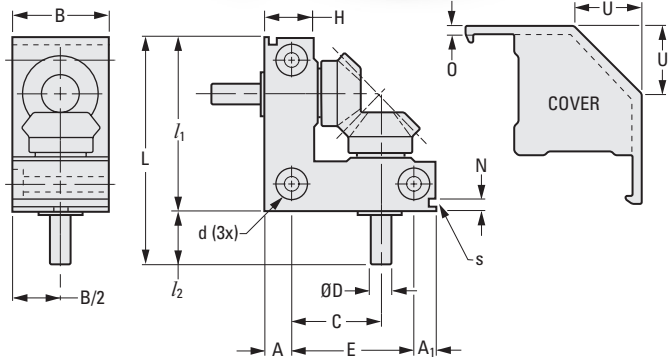
> MATERIAL:

- Gears** - AISI 1045 Steel
- Cover** - Plastic, Black
- Shafts** - 303 Stainless Steel
- Housing** - Aluminum, Black Anodized
- Bearings** - Layers of special resin and bronze with steel backing



> SPECIFICATION:

- Shaft Tolerance:
- 4, 5 & 6 mm 0/-0.018
- 8 & 10 mm 0/-0.022
- 12 mm 0/-0.027



The projections shown are per ISO convention.

PERFORMANCE DATA

Input (rpm)	Output Torque N • m			
	S99RD1MBE40L-1	S99RD1MBE55L-1	S99RD1MBE70L-1A or B	S99RD1MBE88L-1A or B
50	0.14	0.553	1.035	3.32
100	0.139	0.544	1.017	3.237
250	0.135	0.524	0.968	3.013
500	0.129	0.491	0.896	2.7

METRIC COMPONENT

Catalog Number	Gear Module	No. of Teeth	Gear Ratio	L Overall Length	L ₁ Housing Length	H Housing Width	D Shaft Dia. h8	L ₂ Shaft Length	A	A ₁	E
S99RD1MBE40L-1	0.5	20	1:1	40	30	10	4	10	5	4.5	20.5
S99RD1MBE55L-1	0.8	20	1:1	55	40	13	5	15	6.5	5	28.5
S99RD1MBE70L-1A	1	20	1:1	70	50	16	6	20	8	6	36
S99RD1MBE70L-1B	1	20	1:1	70	50	16	8	20	8	6	36
S99RD1MBE88L-1A	1.5	20	1:1	88	63	20	10	25	10	7	46
S99RD1MBE88L-1B	1.5	20	1:1	88	63	20	12	25	10	7	46

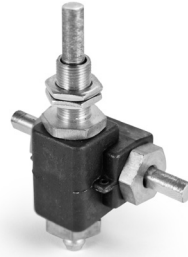
Catalog Number (Ref.)	C	B Housing Depth	d			N	S Slot		O Cover Thickness	U Chamfer	Wt. g
			Mtg. Hole	Hole C'bore	C'bore Depth		Width	Depth			
S99RD1MBE40L-1	15	18	3.4	6.5	3.5	2.5	1.5	1.7	1.7	13	30
S99RD1MBE55L-1	21.5	25	3.4	6.5	3.5	4	2.5	2	1.9	16	85
S99RD1MBE70L-1A or B	27	30	4.3	8	4.5	4.5	2.5	2.5	2.1	20	170
S99RD1MBE88L-1A or B	33	40	5.2	9.5	5.5	5	2.5	2.5	2.1	27	380

RIGHT ANGLE HELICAL GEAR SPEED REDUCERS



MULTIPLE RATIOS
 RATED SPEEDS UP TO 1800 RPM
 PANEL-MOUNTED
 LIGHT-DUTY

PHONE: 516.328.3300 • FAX: 516.326.8827 • WWW.SDP-SI.COM



> MATERIAL:

- Housing and Base - Aluminum Alloy, Black Anodized
- Gears - Hardened Steel Helical
- Shafts - Steel-Plated

> SPECIFICATIONS:

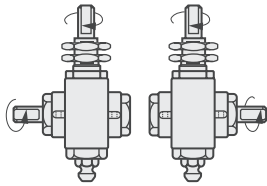
- Backlash: 3° Nominal
- 8° Including End Play

> APPROX. WEIGHT:

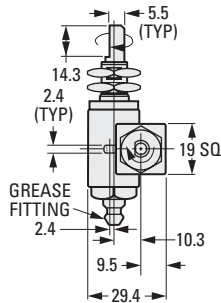
113 grams

For 1:1 ratio, any shaft may be used as input.

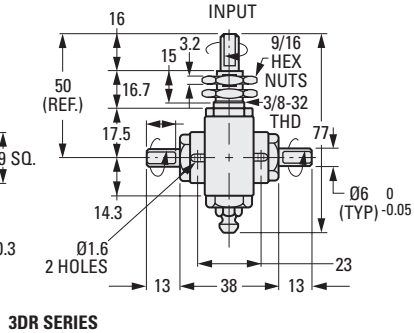
The projections shown are per ISO convention.



2SR SERIES 2RR SERIES



Output Power @ 1800 rpm Input		
Duty	From 1:1 to 5:1 Ratio	From 10:1 to 25:1 Ratio
Intermittent	93W (1/8 HP)	62W (1/12 HP)
Continuous	50W (1/15 HP)	37W (1/20 HP)



3DR SERIES

METRIC COMPONENT

Catalog Number	Shaft Extension	Gear Ratio	Torque Capacity N • m		
			Ultimate Static	Manual	Dynamic
A 2223M3DR0106	Left & Right	1:1	4	3.2	0.5
A 2223M2SR0106	Left	1:1	4	3.2	0.5
A 2223M2RR0106	Right	1:1	4	3.2	0.5
A 2223M3DR0206	Left & Right	2:1	4	3.2	0.5
A 2223M2SR0206	Left	2:1	4	3.2	0.5
A 2223M2RR0206	Right	2:1	4	3.2	0.5
A 2223M3DR0306	Left & Right	3:1	4	3.2	0.5
A 2223M2SR0306	Left	3:1	4	3.2	0.5
A 2223M2RR0306	Right	3:1	4	3.2	0.5
A 2223M3DR0406	Left & Right	4:1	4	3.2	0.5
A 2223M2SR0406	Left	4:1	4	3.2	0.5
A 2223M2RR0406	Right	4:1	4	3.2	0.5
A 2223M3DR0506	Left & Right	5:1	4	3.2	0.5
A 2223M2SR0506	Left	5:1	4	3.2	0.5
A 2223M2RR0506	Right	5:1	4	3.2	0.5
A 2223M3DR1006	Left & Right	10:1	2.8	2.3	0.35
A 2223M2SR1006	Left	10:1	2.8	2.3	0.35
A 2223M2RR1006	Right	10:1	2.8	2.3	0.35
A 2223M3DR1506	Left & Right	15:1	2.8	2.3	0.35
A 2223M2SR1506	Left	15:1	2.8	2.3	0.35
A 2223M2RR1506	Right	15:1	2.8	2.3	0.35
A 2223M3DR2506	Left & Right	25:1	2.8	2.3	0.35
A 2223M2SR2506	Left	25:1	2.8	2.3	0.35
A 2223M2RR2506	Right	25:1	2.8	2.3	0.35

1

R

T

1

2

3

4

5

6

7

8

9

10

11

12

13

14

15

A