

CLOCKWISE  
PRECISION LASER ENGRAVED

PHONE: 516.328.3300 • FAX: 516.326.8827 • WWW.SDP-SI.COM



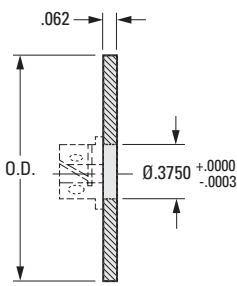
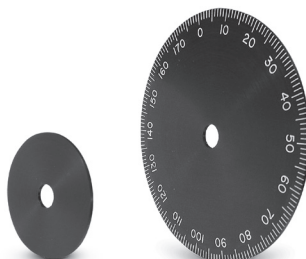
**> MATERIAL:**

2024 Aluminum, Black Hard Anodized

**> MODIFICATION:**

Assembled with hubs upon request at nominal charge.

See index for hubs



**INCH COMPONENT**

Catalog Number	O.D. +.000 -.003	No. of Graduations	Steps in Degrees	Dial Range
S1228Y-GA-02	1.500	180	2°	0 ... 360
S1228Y-GA-04	1.500	60	6°	0 ... 60
S1228Y-GA-05	1.500	50	7°12'	0 ... 50
S1228Y-GA-06	1.500	25	14°24'	0 ... 25
S1228Y-GA-07	1.500	10	36°	0 ... 10
S1228Y-GA-10	2.000	120	3°	0 ... 120
S1228Y-GA-11	2.000	100	3°36'	0 ... 100
S1228Y-GA-12	2.000	72	5°	0 ... 72
S1228Y-GA-13	2.000	60	6°	0 ... 60
S1228Y-GA-14	2.000	50	7°12'	0 ... 50
S1228Y-GA-15	2.000	25	14°24'	0 ... 25
S1228Y-GA-16	2.000	10	36°	0 ... 10
S1228Y-GA-17	3.000	BLANK	—	—
S1228Y-GA-18	3.000	360	1°	0 ... 360
S1228Y-GA-19	3.000	180	2°	0 ... 360
S1228Y-GA-20	3.000	200	1°48'	0 ... 200
S1228Y-GA-21	3.000	180	2°	0 ... 180
S1228Y-GA-22	3.000	120	3°	0 ... 120
S1228Y-GA-23	3.000	100	3°36'	0 ... 100
S1228Y-GA-24	3.000	72	5°	0 ... 72
S1228Y-GA-25	3.000	50	7°12'	0 ... 50
S1228Y-GA-26	3.000	10	36°	0 ... 10
S1228Y-GA-27	4.000	BLANK	—	—
S1228Y-GA-29	4.000	180	2°	0 ... 360
S1228Y-GA-30	4.000	200	1°48'	0 ... 200
S1228Y-GA-31	4.000	180	2°	0 ... 180
S1228Y-GA-32	4.000	100	3°36'	0 ... 100
S1228Y-GA-33	4.000	50	7°12'	0 ... 50
S1228Y-GA-34	4.000	10	36°	0 ... 10

I

R

T

1

2

3

4

5

6

7

8

9

**10**

11

12

13

14

15

16

**PRECISION DRUM DIALS**

PHONE: 516.328.3300 • FAX: 516.326.8827 • WWW.SDP-SI.COM

COUNTERCLOCKWISE  
PRECISION LASER ENGRAVED



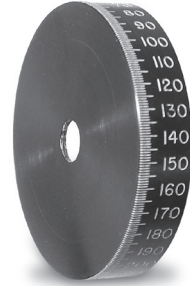
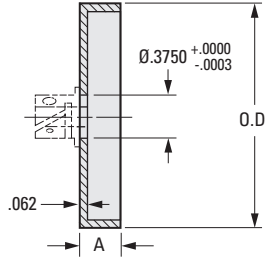
**› MATERIAL:**

2024 Aluminum, Black Hard Anodized

**› MODIFICATION:**

Assembled with hubs upon request at nominal charge.

See index for hubs

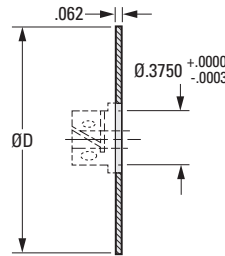


**INCH COMPONENT**

Catalog Number	A	O.D. ± .005	No. of Graduations	Steps in Degrees	Dial Range
S5189Y-GD-2	.500	2.990	180	2°	0 ... 360
S5189Y-GD-3	.500	2.490	360	1°	0 ... 360
S5189Y-GD-4	.500	2.490	180	2°	0 ... 360

**PRECISION DISC DIALS**

COUNTERCLOCKWISE  
PRECISION LASER ENGRAVED



**› MATERIAL:**

2024 Aluminum, Black Hard Anodized

**› MODIFICATION:**

Assembled with hubs upon request at nominal charge.

See index for hubs

**INCH COMPONENT**

Catalog Number	O.D. +.000 -.003	No. of Graduations	Steps in Degrees	Dial Range
S1228Y-GC-1	3.000	360	1°	0 ... 360
S1228Y-GC-2	3.000	180	2°	0 ... 360
S1228Y-GC-3	3.000	100	3°36'	0 ... 100
S1228Y-GC-4	4.000	360	1°	0 ... 360
S1228Y-GC-5	4.000	180	2°	0 ... 360

# PRECISION DRUM DIALS



CLOCKWISE  
PRECISION LASER ENGRAVED

PHONE: 516.328.3300 • FAX: 516.326.8827 • WWW.SDP-SI.COM



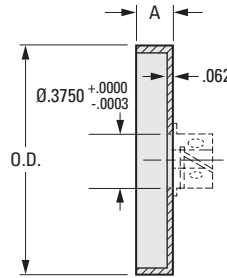
**> MATERIAL:**

2024 Aluminum, Black Hard Anodized

**> MODIFICATION:**

Assembled with hubs upon request at nominal charge.

See index for hubs



## INCH COMPONENT

Catalog Number	A	O.D. ± .005	No. of Graduations	Steps in Degrees	Dial Range
S5189Y-GB-01	3/8	.990	—	—	BLANK
S5189Y-GB-02	3/8	.990	100	3°36'	0 ... 100
S5189Y-GB-04	3/8	.990	—	—	BLANK
S5189Y-GB-05	3/8	1.490	60	6°	0 ... 60
S5189Y-GB-06	3/8	1.490	100	3°36'	0 ... 100
S5189Y-GB-07	3/8	1.490	180	2°	0 ... 360
S5189Y-GB-08	3/8	1.990	—	—	BLANK
S5189Y-GB-09	3/8	1.990	50	7°12'	0 ... 50
S5189Y-GB-10	3/8	1.990	25	14°24'	0 ... 25
S5189Y-GB-11	3/8	1.990	10	36°	0 ... 10
S5189Y-GB-12	3/8	1.990	180	2°	0 ... 180
S5189Y-GB-13	3/8	1.990	180	2°	0 ... 360
S5189Y-GB-14	1/2	2.490	—	—	BLANK
S5189Y-GB-15	1/2	2.490	200	1°48'	0 ... 200
S5189Y-GB-16	1/2	2.490	180	2°	0 ... 180
S5189Y-GB-18	1/2	2.490	360	1°	0 ... 360
S5189Y-GB-19	1/2	2.490	100	3°36'	0 ... 100
S5189Y-GB-20	1/2	2.490	—	—	BLANK
S5189Y-GB-21	1/2	2.990	180	2°	0 ... 180
S5189Y-GB-22	1/2	2.990	100	3°36'	0 ... 100
S5189Y-GB-23	1/2	2.990	10	36°	0 ... 10
S5189Y-GB-24	1/2	2.990	360	1°	0 ... 360
S5189Y-GB-25	1/2	2.990	180	2°	0 ... 360



VERNIER AND DRUM DIAL SETS

PHONE: 516.328.3300 • FAX: 516.326.8827 • WWW.SDP-SI.COM

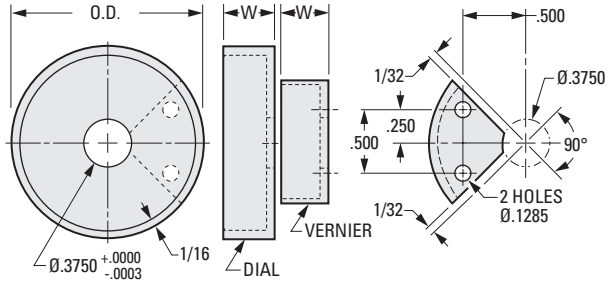
PRECISION LASER ENGRAVED

► MATERIAL:

2024 Aluminum, Black Hard Anodized

Other sets available on request.  
Assembled with hubs, upon request,  
at nominal charge.

See index for hubs



INCH COMPONENT

Catalog Number	O.D. $\pm .005$	W	No. of Graduations	Steps in Degrees	Dial Range	Vernier Reading
S9922Y-GJ-1	1.490	.375	180	2°	0 ... 360	12 arc min.
S9922Y-GJ-2	1.990	.375	180	2°	0 ... 360	12 arc min.
S9922Y-GJ-3	2.490	.500	360	1°	0 ... 360	6 arc min.
S9922Y-GJ-4	2.990	.500	360	1°	0 ... 360	6 arc min.

VERNIER AND DISC DIAL SETS

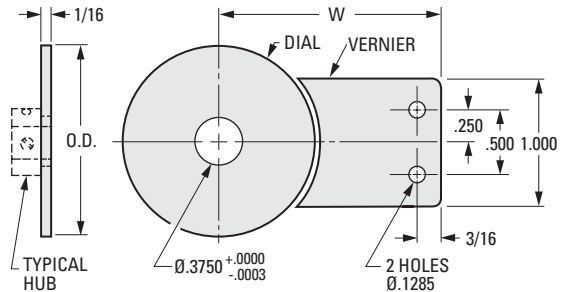
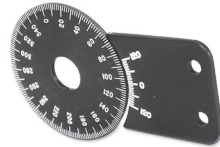
PRECISION LASER ENGRAVED

► MATERIAL:

2024 Aluminum, Black Hard Anodized

Other sets available on request.  
Assembled with hubs, upon request,  
at nominal charge.

See index for hubs



INCH COMPONENT

Catalog Number	O.D. $\pm .005$	W	No. of Graduations	Steps in Degrees	Dial Range	Vernier Reading
S9909Y-GH-1	1.500	1.760	180	2°	0 ... 360	12 arc min.
S9909Y-GH-2	2.000	2.010	180	2°	0 ... 360	12 arc min.
S9909Y-GH-4	4.000	3.010	360	1°	0 ... 360	6 arc min.