

CLOCKWISE
PRECISION LASER ENGRAVED

PHONE: 516.328.3300 • FAX: 516.326.8827 • WWW.SDP-SI.COM

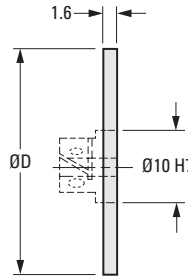
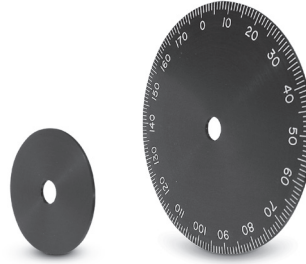
> MATERIAL:

2024 Aluminum, Black Hard Anodized

> MODIFICATION:

Assembled with hubs upon request at nominal charge.

See index for hubs



METRIC COMPONENT

Catalog Number	D Dia. h9	No. of Graduations	Steps in Degrees	Dial Range
S12BM1M038000	38	BLANK	—	—
S12BM1M038180	38	180	2°	0 ... 360
S12BM1M038060	38	60	6°	0 ... 60
S12BM1M038050	38	50	7°12'	0 ... 50
S12BM1M038025	38	25	14°24'	0 ... 25
S12BM1M038010	38	10	36°	0 ... 10
S12BM1M051000	51	BLANK	—	—
S12BM1M051180	51	180	2°	0 ... 360
S12BM1M051120	51	120	3°	0 ... 120
S12BM1M051060	51	60	6°	0 ... 60
S12BM1M051025	51	25	14°24'	0 ... 25
S12BM1M076000	76	BLANK	—	—
S12BM1M076360	76	360	1°	0 ... 360
S12BM1M076180	76	180	2°	0 ... 360
S12BM1M076200	76	200	1°48'	0 ... 200
S12BM1M076180A	76	180	2°	0 ... 180
S12BM1M076120	76	120	3°	0 ... 120
S12BM1M076100	76	100	3°36'	0 ... 100
S12BM1M076072	76	72	5°	0 ... 72
S12BM1M076050	76	50	7°12'	0 ... 50
S12BM1M076010	76	10	36°	0 ... 10
S12BM1M102000	101.5	BLANK	—	—
S12BM1M102360	101.5	360	1°	0 ... 360
S12BM1M102180	101.5	180	2°	0 ... 360
S12BM1M102200	101.5	200	1°48'	0 ... 200
S12BM1M102180A	101.5	180	2°	0 ... 180
S12BM1M102100	101.5	100	3°36'	0 ... 100
S12BM1M100010	101.5	10	36°	0 ... 10

PRECISION DRUM DIALS

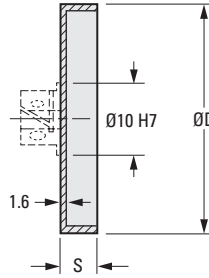
COUNTERCLOCKWISE
PRECISION LASER ENGRAVED



> **MATERIAL:**
2024 Aluminum, Black Hard Anodized

> **MODIFICATION:**
Assembled with hubs upon request
at nominal charge.

See index for hubs



METRIC COMPONENT

Catalog Number	S	D Dia.	No. of Graduations	Steps in Degrees	Dial Range
S51BM2M076360	12.5	76	360	1°	0 ... 360
S51BM2M076180	12.5	76	180	2°	0 ... 360
S51BM2M063180	12.5	63	180	2°	0 ... 360

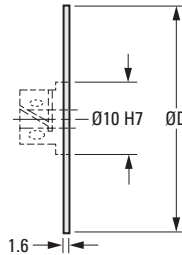
PRECISION DISC DIALS

COUNTERCLOCKWISE
PRECISION LASER ENGRAVED

> **MATERIAL:**
2024 Aluminum, Black Hard Anodized

> **MODIFICATION:**
Assembled with hubs upon request
at nominal charge.

See index for hubs



METRIC COMPONENT

Catalog Number	D Dia. h9	No. of Graduations	Steps in Degrees	Dial Range
S12BM2M076360	76	360	1°	0 ... 360
S12BM2M076180	76	180	2°	0 ... 360
S12BM2M076100	76	100	3°36'	0 ... 100
S12BM2M102360	101.5	360	1°	0 ... 360
S12BM2M102180	101.5	180	2°	0 ... 360

CLOCKWISE
PRECISION LASER ENGRAVED

PHONE: 516.328.3300 • FAX: 516.326.8827 • WWW.SDP-SI.COM



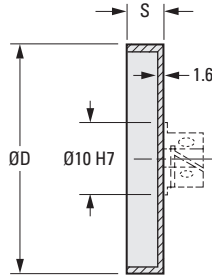
> MATERIAL:

2024 Aluminum, Black Hard Anodized

> MODIFICATION:

Assembled with hubs upon request at nominal charge.

See index for hubs



METRIC COMPONENT

Catalog Number	S	D Dia. h12	No. of Graduations	Steps in Degrees	Dial Range
S51BM1M025000	10	25	BLANK	—	—
S51BM1M025100	10	25	100	3°36'	0 ... 100
S51BM1M025180	10	25	180	2°	0 ... 360
S51BM1M038000	10	38	BLANK	—	—
S51BM1M038060	10	38	60	6°	0 ... 60
S51BM1M038100	10	38	100	3°36'	0 ... 100
S51BM1M038180	10	38	180	2°	0 ... 360
S51BM1M051000	10	50.5	BLANK	—	—
S51BM1M051050	10	50.5	50	7°12'	0 ... 50
S51BM1M051025	10	50.5	25	14°24'	0 ... 25
S51BM1M051010	10	50.5	10	36°	0 ... 10
S51BM1M051180	10	50.5	180	2°	0 ... 180
S51BM1M051180A	10	50.5	180	2°	0 ... 360
S51BM1M063000	12.5	63	BLANK	—	—
S51BM1M063200	12.5	63	200	1°48'	0 ... 200
S51BM1M063180	12.5	63	180	2°	0 ... 180
S51BM1M063360	12.5	63	360	1°	0 ... 360
S51BM1M063100	12.5	76	100	3°36'	0 ... 100
S51BM1M076000	12.5	76	BLANK	—	—
S51BM1M076180	12.5	76	180	2°	0 ... 180
S51BM1M076100	12.5	76	100	3°36'	0 ... 100
S51BM1M076010	12.5	76	10	36°	0 ... 10
S51BM1M076360	12.5	76	360	1°	0 ... 360
S51BM1M076180A	12.5	76	180	2°	0 ... 360

- I
- R
- T
- 1
- 2
- 3
- 4
- 5
- 6
- 7
- 8
- 9
- 10**
- 11
- 12
- 13
- 14
- 15
- A

VERNIER AND DRUM DIAL SETS

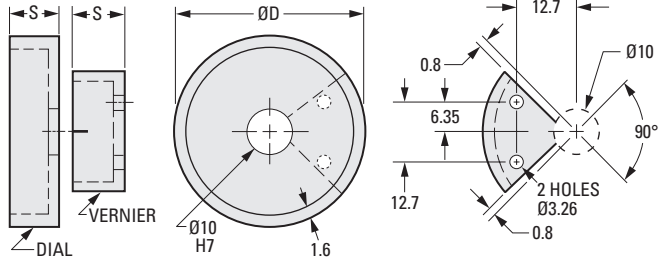
PHONE: 516.328.3300 • FAX: 516.326.8827 • WWW.SDP-SI.COM

PRECISION LASER ENGRAVED

► MATERIAL:

2024 Aluminum, Black Hard Anodized

Other sets available on special order.



The projections shown are per ISO convention.

METRIC COMPONENT

Catalog Number	D Dia. h12	S	No. of Graduations	Steps in Degrees	Dial Range	Vernier Reading
S9922YM038180	38	10	180	2°	0 ... 360	12 arc min.
S9922YM050180	50.5	10	180	2°	0 ... 360	12 arc min.
S9922YM063360	63	12.5	360	1°	0 ... 360	6 arc min.
S9922YM076360	76	12.5	360	1°	0 ... 360	6 arc min.

VERNIER AND DISC DIAL SETS

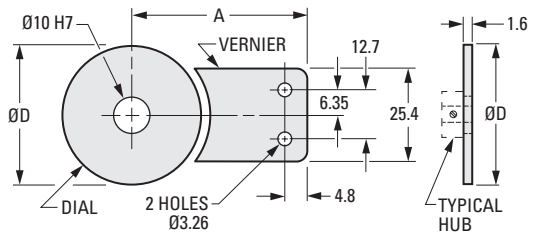
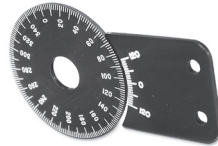
PRECISION LASER ENGRAVED

► MATERIAL:

2024 Aluminum, Black Hard Anodized

Other sets available on special order.

See index for hubs



The projections shown are per ISO convention.

METRIC COMPONENT

Catalog Number	D Dia. h10	A	No. of Graduations	Steps in Degrees	Dial Range	Vernier Reading
S9909YM038180	38	45	180	2°	0 ... 360	12 arc min.
S9909YM051180	51	50	180	2°	0 ... 360	12 arc min.
S9909YM102360	101.5	75	360	1°	0 ... 360	6 arc min.