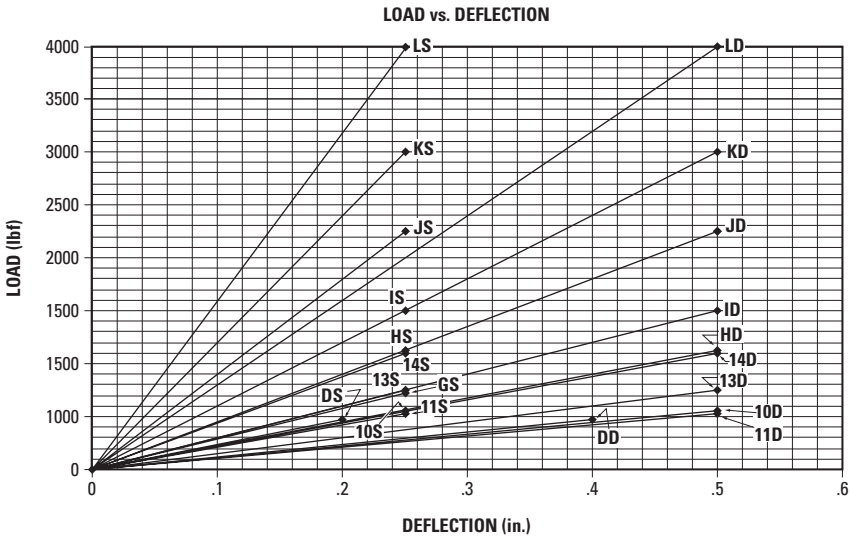
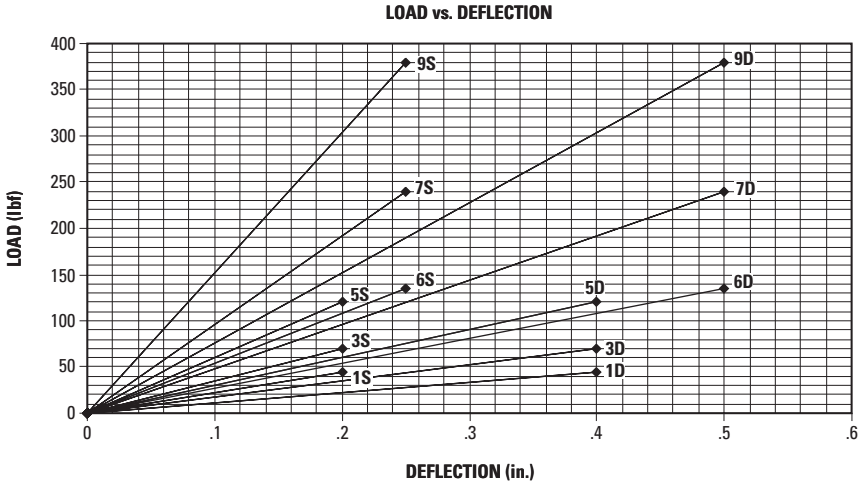


NEOPRENE
DURULENE™

PHONE: 516.328.3300 • FAX: 516.326.8827 • WWW.SDP-SI.COM

- For Rectangular Base Mounts **A10Z53**... See previous page
- For Diamond Base Mounts **A10Z52**... See following pages



- I
- R
- T
- 1
- 2
- 3
- 4
- 5
- 6
- 7
- 8**
- 9
- 10
- 11
- 12
- 13
- 14
- 15
- 16

NEOPRENE
DURULENE™
FOR LOADS OF 45 TO 120 lbf

PHONE: 516.328.3300 • FAX: 516.326.8827 • WWW.SDP-SI.COM

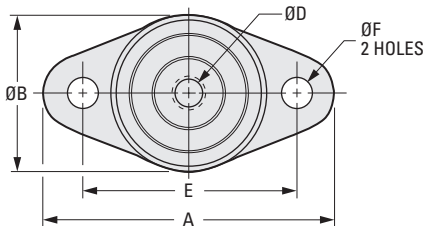


► **MATERIAL:**
Plates - Steel
Isolator - Oil-Resistant Neoprene or Durulene™

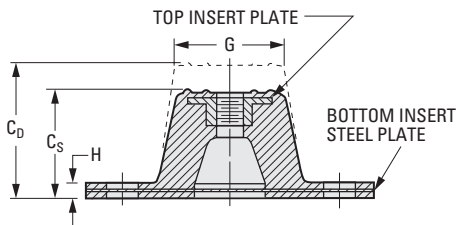
► **OPERATING TEMPERATURE:**
Neoprene: -40°F to +180°F
Durulene™: -65°F to +250°F

► **FEATURES:**
Threaded plate molded into mounting.
Nonskid base and top surface.

► **APPLICATIONS:**
Industrial
Air Conditioning
Business Machines
CHOOSE DURULENE™ FOR THE FOLLOWING:
Rooftop - Extreme heat or cold, direct sunlight
Indoor/Outdoor - Severe weather
Ozone - Emitting electrical equipment



Additional load ratings available on special order.



INCH COMPONENT

Catalog Number *		Graph Ref. Δ	Rated Load lbf	A	B Dia.	Height	
Neoprene	Durulene™					Standard C _S	Double C _D
A10Z52-FA0045	A10Z52-FA0045 D	1S, 1D	45	3-1/8	1-3/4	1	1-1/4
A10Z52-FA0070	A10Z52-FA0070 D	3S, 3D	70	3-1/8	1-3/4	1	1-1/4
A10Z52-FA0120	A10Z52-FA0120 D	5S, 5D	120	3-1/8	1-3/4	1	1-1/4

Catalog Number (Ref.) *		D Dia.	E	F Dia.	G	H	Max. Static Deflection	
Neoprene	Durulene™						Standard	Double
A10Z52-FA0045	A10Z52-FA0045 D	5/16-18	2-3/8	11/32	1-1/4	3/16	.20	.40
A10Z52-FA0070	A10Z52-FA0070 D	5/16-18	2-3/8	11/32	1-1/4	3/16	.20	.40
A10Z52-FA0120	A10Z52-FA0120 D	5/16-18	2-3/8	11/32	1-1/4	3/16	.20	.40

* To complete the Catalog Number, specify:
[S] for Standard Deflection
or [D] for Double Deflection

Continued on the next page
Δ For Load Deflection Graphs see previous page.

NEOPRENE
DURULENE™
FOR LOADS OF 135 TO 1100 lbf

PHONE: 516.328.3300 • FAX: 516.326.8827 • WWW.SDP-SI.COM



► **MATERIAL:**

- Plates - Steel
- Isolator - Oil-Resistant Neoprene or Durulene™

► **OPERATING TEMPERATURE:**

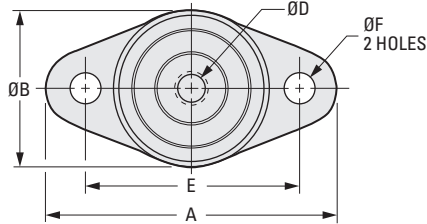
- Neoprene: -40°F to +180°F
- Durulene™: -65°F to +250°F

► **FEATURES:**

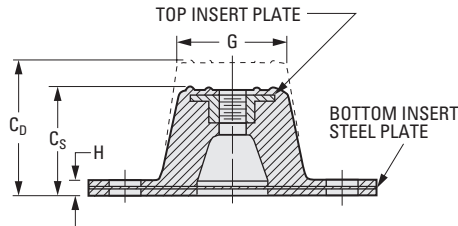
- Threaded plate molded into mounting.
- Nonskid base and top surface.

► **APPLICATIONS:**

- Industrial
- Air Conditioning
- Business Machines
- CHOOSE DURULENE™ FOR THE FOLLOWING:**
- Rooftop - Extreme heat or cold, direct sunlight
- Indoor/Outdoor - Severe weather
- Ozone - Emitting electrical equipment



Additional load ratings available on special order.



INCH COMPONENT

Catalog Number *		Graph Ref. Δ	Rated Load lbf	A	B Dia.	Height		
Neoprene	Durulene™					Standard C _s	Double C _D	
A10Z52-FB0135	A10Z52-FB0135	D	6S, 6D	135	3-7/8	2-3/8	1-1/4	1-3/4
A10Z52-FB0240	A10Z52-FB0240	D	7S, 7D	240	3-7/8	2-3/8	1-1/4	1-3/4
A10Z52-FB0380	A10Z52-FB0380	D	9S, 9D	380	3-7/8	2-3/8	1-1/4	1-3/4
A10Z52-FB0550	A10Z52-FB0550	D	10S, 10D	550	3-7/8	2-3/8	1-1/4	1-3/4
A10Z52-FC0525	A10Z52-FC0525	D	11S, 11D	525	5-1/2	3-3/8	1-3/4	2-7/8
A10Z52-FC0750	A10Z52-FC0750	D	13S, 13D	750	5-1/2	3-3/8	1-3/4	2-7/8
A10Z52-FC1100	A10Z52-FC1100	D	14S, 14D	1100	5-1/2	3-3/8	1-3/4	2-7/8

Catalog Number (Ref.) *		D Dia.	E	F Dia.	G	H	Max. Static Deflection		
Neoprene	Durulene™						Standard	Double	
A10Z52-FB0135	A10Z52-FB0135	D	3/8-16	3	11/32	1-3/4	7/32	.25	.50
A10Z52-FB0240	A10Z52-FB0240	D	3/8-16	3	11/32	1-3/4	7/32	.25	.50
A10Z52-FB0380	A10Z52-FB0380	D	3/8-16	3	11/32	1-3/4	7/32	.25	.50
A10Z52-FB0550	A10Z52-FB0550	D	3/8-16	3	11/32	1-3/4	7/32	.25	.50
A10Z52-FC0525	A10Z52-FC0525	D	1/2-13	4-1/8	9/16	2-1/2	1/4	.25	.50
A10Z52-FC0750	A10Z52-FC0750	D	1/2-13	4-1/8	9/16	2-1/2	1/4	.25	.50
A10Z52-FC1100	A10Z52-FC1100	D	1/2-13	4-1/8	9/16	2-1/2	1/4	.25	.50

* To complete the Catalog Number, specify:
S for **Standard Deflection**
D for **Double Deflection**

Continued from the previous page
 Δ For Load Deflection Graphs see previous page.

