

ZERO-BACKLASH ARMATURE
FOR IN-LINE LOADS

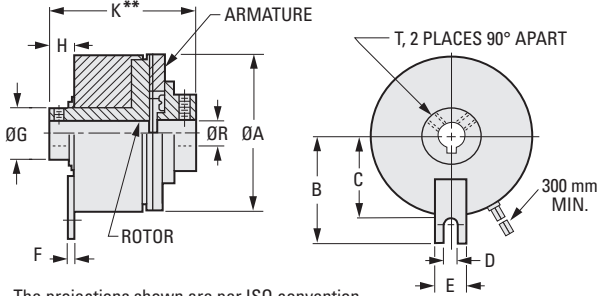
PHONE: 516.328.3300 • FAX: 516.326.8827 • WWW.SDP-SI.COM



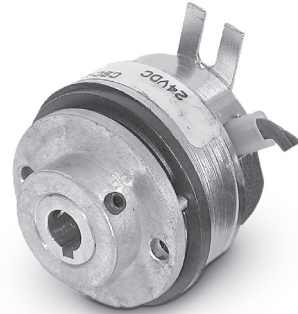
> COIL DATA:

Voltage: 24V DC

Other voltages and dissimilar bore combinations are available as special order.



The projections shown are per ISO convention.



Keyway Dimensions			
Bore	6	8	10
Width	2	3	3
Height	7	9.4	11.4

METRIC COMPONENT

Catalog Number	Static Torque N • m	Max. Wattage	Armature Inertia kgf • m • sec ²	Rotor Inertia kgf • m • sec ²	Energy Dissipation N • m/min.	Armature		R Bore
						Engagement msec	Disengagement msec	
Δ S90CSCM11A0606	0.56	5	0.40 x 10 ⁻⁶	0.30 x 10 ⁻⁶	237.3	5	18	6
Δ S90CSCM11A0808	0.56	5	0.40 x 10 ⁻⁶	0.30 x 10 ⁻⁶	237.3	5	18	8
□ S90CSCM17A0606	1.69	6	0.93 x 10 ⁻⁶	0.13 x 10 ⁻⁵	569.5	10	27	6
□ S90CSCM26A1010	9.04	9.5	0.93 x 10 ⁻⁵	0.71 x 10 ⁻⁵	3525.6	15	35	10

Catalog Number (Ref.)	A	B	C	D	E	F	G	H	Length**		T Set Screws	Weight kg
									K	Air Gap		
Δ S90CSCM11A0606	31.8	22.1	14.2	3.2	9.6	0.8	12.4	5.5	32.5	0.1/0.22	M3	0.1
Δ S90CSCM11A0808	31.8	22.1	14.2	3.2	9.6	0.8	12.4	5.5	32.5	0.1/0.22	M3	0.1
□ S90CSCM17A0606	45.2	33.5	23.1	4.8	12.7	1.5	15.8	7.5	39.4	0.1/0.22	M4	0.3
□ S90CSCM26A1010	66.8	44.5	34	4.8	12.7	1.5	22.2	8.7	53.3	0.15/0.33	M5	0.6

* Typical torque after burnishing; units shipped burnished.

** Length equals K including initial working air gap at installation.

Δ Keyway not available in rotor.

□ To be discontinued when present stock is depleted.

- I
- R
- T
- 1
- 2
- 3
- 4
- 5
- 6
- 7
- 8
- 9
- 10
- 11
- 12
- 13
- 14
- 15
- A

FLANGE-MOUNTED CLUTCH COUPLINGS

SDP/SI

ZERO-BACKLASH ARMATURE
FOR IN-LINE LOADS

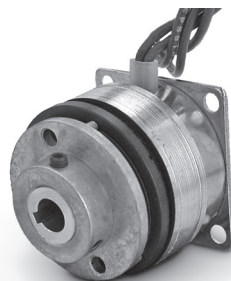
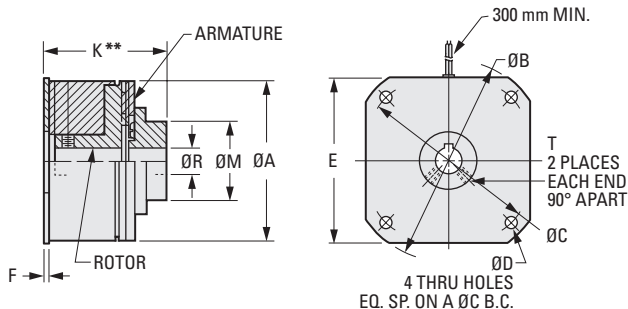
PHONE: 516.328.3300 • FAX: 516.326.8827 • WWW.SDP-SI.COM



0 10

> COIL DATA:

Voltage: 24V DC



The projections shown are per ISO convention.

Keyway Dimensions

Bore	8	10
Width	3	3
Height	9.4	11.4

METRIC COMPONENT

Catalog Number §	Static* Torque N • m	Max. Wattage	Armature Inertia kgf • m • sec ²	Rotor Inertia kgf • m • sec ²	Energy Dissipation N • m/min	Armature		R Bore
						Engagement msec	Disengagement msec	
Δ S90CFM11A0606	0.56	5	0.39 x 10 ⁻⁶	0.29 x 10 ⁻⁶	237.3	5	18	6
Δ S90CFM11A0808	0.56	5	0.39 x 10 ⁻⁶	0.29 x 10 ⁻⁶	237.3	5	18	8
S90CFM17A0808	1.69	6	0.93 x 10 ⁻⁶	0.13 x 10 ⁻⁵	569.5	10	27	8
S90CFM26A1010	9.04	9.5	0.93 x 10 ⁻⁵	0.74 x 10 ⁻⁵	3525.6	15	35	10

Catalog Number § (Ref.)	A	B	C	D	E	F	Length**		M	T Set Screws	Weight kg
							K	Air Gap			
Δ S90CFM11A0606	31.8	38.05	33.3	3.2	29.8	1.2	29	0.1/0.22	17.5	M3	0.1
Δ S90CFM11A0808	31.8	38.05	33.3	3.2	29.8	1.2	29	0.1/0.22	17.5	M3	0.1
S90CFM17A0808	45.3	61.87	54	4.8	46.3	1.5	34.3	0.15/0.33	26.9	M4	0.3
S90CFM26A1010	66.7	88.87	79.4	4.8	66.8	1.6	46.8	0.15/0.33	43.7	M5	0.6

* Typical torque after burnishing; units shipped burnished.

** Length equals K including the working gap at installation.

Δ Keyway not available in rotor.

§ To be discontinued when present stock is depleted.