

FAIRLOC® TYPE HUBS
 MOLDED NEOPRENE CENTER
 SHAFT-TO-SHAFT INSULATION
 TORSIONAL VIBRATION ISOLATION

PHONE: 516.328.3300 • FAX: 516.326.8827 • WWW.SDP-SI.COM



> MATERIAL:

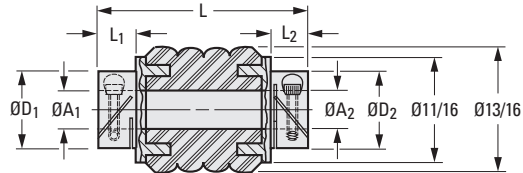
Hubs - 303 Stainless Steel
 Center - Molded Neoprene, Durometer 73

> MISALIGNMENT COMPENSATION:

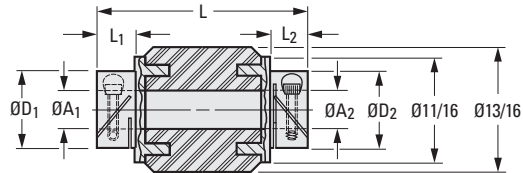
Ribbed Style - Max. Angular Offset: 1°
 Max. Lateral Offset: .015
 Smooth Style - Max. Angular Offset: 1°
 Max. Lateral Offset: .005

> SPECIFICATION:

Bore Size	Max. Torque ozf in.
.1200	100
.1250	120
.1875	150
.2500	180



Ribbed Style



Smooth Style

Fairloc® hubs require controlled shaft tolerances.
 Suggested clearance fit between the bore and shaft is .0001/.0008.

Other bore sizes and combinations available on special order.

INCH COMPONENT

Catalog Number		A ₁ Bore +.001 -.000	A ₂ Bore +.001 -.000	D ₁ Hub Dia.	D ₂ Hub Dia.	L ₁ Hub Length	L ₂ Hub Length	L Overall Length ± 1/64	Cap Screw
Ribbed Style	Smooth Style								
S50FSR-0303	S50FSS-0303	.1200	.1200	.440	.440	.257	.257	1.264	#2-56
S50FSR-0304	S50FSS-0304	.1200	.1250	.440	.440	.257	.257	1.264	#2-56
S50FSR-0404	S50FSS-0404	.1250	.1250	.440	.440	.257	.257	1.264	#2-56
S50FSR-0406	S50FSS-0406	.1250	.1875	.440	.495	.257	.257	1.264	#2-56
S50FSR-0408	S50FSS-0408	.1250	.2500	.440	.610	.257	.295	1.302	#2-56 / #4-40
S50FSR-0606	S50FSS-0606	.1875	.1875	.495	.495	.257	.257	1.264	#2-56
S50FSR-0608	S50FSS-0608	.1875	.2500	.495	.610	.257	.295	1.302	#2-56 / #4-40
S50FSR-0808	S50FSS-0808	.2500	.2500	.610	.610	.295	.295	1.330	#4-40



FAIRLOC® TYPE HUBS
 MOLDED NEOPRENE CENTER
 SHAFT-TO-SHAFT INSULATION
 TORSIONAL VIBRATION ISOLATION

PHONE: 516.328.3300 • FAX: 516.326.8827 • WWW.SDP-SI.COM



> MATERIAL:

Hubs - 303 Stainless Steel
Center - Molded Neoprene, Durometer 73

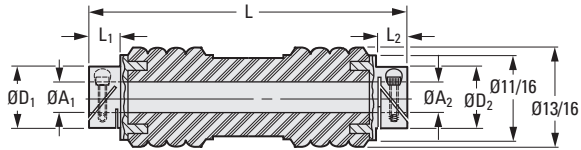
> MISALIGNMENT COMPENSATION:

Ribbed Style - Max. Angular Offset: 15°
 Max. Lateral Offset: .015
Smooth Style - Max. Angular Offset: 8°
 Max. Lateral Offset: .010



> SPECIFICATION:

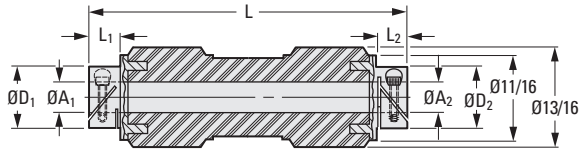
Bore Size	Max. Torque ozf in.
.1200	100
.1250	120
.1875	150
.2500	180



Ribbed Style

Fairloc® hubs require controlled shaft tolerances.
 Suggested clearance fit between the bore and shaft is .0001/.0008.

Other bore sizes and combinations available on special order.



Smooth Style

INCH COMPONENT		A ₁ Bore +.001 -.000	A ₂ Bore +.001 -.000	D ₁ Hub Dia.	D ₂ Hub Dia.	L ₁ Hub Length	L ₂ Hub Length	L Overall Length ± 1/64	Cap Screw
Ribbed Style	Smooth Style								
S50FLR-0303	S50FLS-0303	.1200	.1200	.440	.440	.257	.257	2.574	#2-56
S50FLR-0304	S50FLS-0304	.1200	.1250	.440	.440	.257	.257	2.574	#2-56
S50FLR-0404	S50FLS-0404	.1250	.1250	.440	.440	.257	.257	2.574	#2-56
S50FLR-0406	S50FLS-0406	.1250	.1875	.440	.495	.257	.257	2.574	#2-56
S50FLR-0408	S50FLS-0408	.1250	.2500	.440	.610	.257	.295	2.612	#2-56 / #4-40
S50FLR-0606	S50FLS-0606	.1875	.1875	.495	.495	.257	.257	2.574	#2-56
S50FLR-0608	S50FLS-0608	.1875	.2500	.495	.610	.257	.295	2.612	#2-56 / #4-40
S50FLR-0808	S50FLS-0808	.2500	.2500	.610	.610	.295	.295	2.650	#4-40