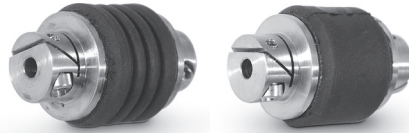


FAIRLOC® TYPE HUBS
 MOLDED NEOPRENE CENTER
 SHAFT-TO-SHAFT INSULATION
 TORSIONAL VIBRATION ISOLATION



➤ **MATERIAL:**

Hubs - 303 Stainless Steel
Center - Molded Neoprene, Durometer 73



➤ **MISALIGNMENT COMPENSATION:**

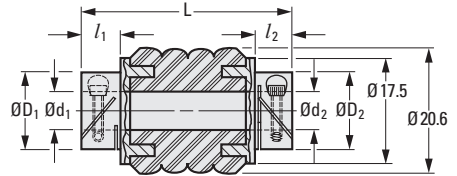
	Ribbed Style	Smooth Style
Max. Angular Offset	1°	1°
Max. Lateral Offset	0.38	0.13

➤ **SPECIFICATION:**

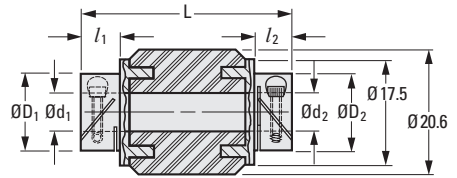
Bore Size	Max. Torque N • m
3	0.71
4	0.85
5	1.06
6	1.27

Fairloc® hubs require controlled shaft tolerances.
 Suggested tolerance according to g6, h6 or h7.

Other bore sizes and combinations available
 on special order.



Ribbed Style



Smooth Style

METRIC COMPONENT

Catalog Number		d ₁ Bore +0.025 0	d ₂ Bore +0.025 0	D ₁ Hub Dia.	D ₂ Hub Dia.	l ₁ Hub Length	l ₂ Hub Length	L Overall Length ± 0.8	Cap Screw
Ribbed Style	Smooth Style								
S50FSRM0303	S50FSSM0303	3	3	11	11	7	7	33.1	M2
S50FSRM0304	S50FSSM0304	3	4	11	12.5	7	7	33.1	M2
S50FSRM0305	S50FSSM0305	3	5	11	16	7	7.5	33.6	M2/M2.5
S50FSRM0306	S50FSSM0306	3	6	11	16	7	7.5	33.6	M2/M2.5
S50FSRM0404	S50FSSM0404	4	4	12.5	12.5	7	7	33.1	M2
S50FSRM0405	S50FSSM0405	4	5	12.5	16	7	7.5	33.6	M2/M2.5
S50FSRM0406	S50FSSM0406	4	6	12.5	16	7	7.5	33.6	M2/M2.5
S50FSRM0505	S50FSSM0505	5	5	16	16	7.5	7.5	34.1	M2.5
S50FSRM0506	S50FSSM0506	5	6	16	16	7.5	7.5	34.1	M2.5
S50FSRM0606	S50FSSM0606	6	6	16	16	7.5	7.5	34.1	M2.5

FAIRLOC® TYPE HUBS
 MOLDED NEOPRENE CENTER
 SHAFT-TO-SHAFT INSULATION
 TORSIONAL VIBRATION ISOLATION



➤ MATERIAL:

Hubs - 303 Stainless Steel
 Center - Molded Neoprene, Durometer 73

➤ MISALIGNMENT COMPENSATION:

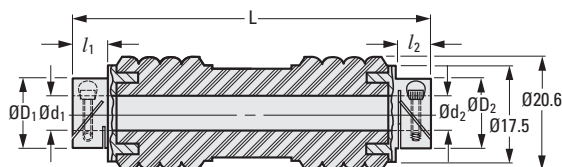
	Ribbed Style	Smooth Style
Max. Angular Offset	15°	8°
Max. Lateral Offset	0.38	0.25

➤ SPECIFICATION:

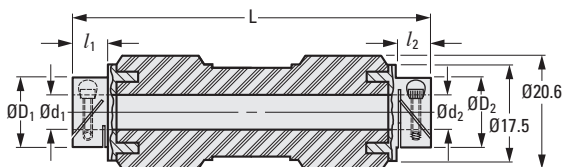
Bore Size	Max. Torque N • m
3	0.71
4	0.85
5	1.06
6	1.27

Fairloc® hubs require controlled shaft tolerances.
 Suggested tolerance according to g6, h6 or h7.

Other bore sizes and combinations available
 on special order.



Ribbed Style



METRIC COMPONENT

Catalog Number		d ₁ Bore +0.025 0	d ₂ Bore +0.025 0	D ₁ Hub Dia.	D ₂ Hub Dia.	l ₁ Hub Length	l ₂ Hub Length	L Overall Length ± 0.8	Cap Screw
Ribbed Style	Smooth Style								
S50FLRM0303	S50FLSM0303	3	3	11	11	7	7	66.3	M2
S50FLRM0304	S50FLSM0304	3	4	11	12.5	7	7	66.3	M2
S50FLRM0305	S50FLSM0305	3	5	11	16	7	7.5	66.8	M2/M2.5
S50FLRM0306	S50FLSM0306	3	6	11	16	7	7.5	66.8	M2/M2.5
S50FLRM0404	S50FLSM0404	4	4	12.5	12.5	7	7	66.3	M2
S50FLRM0405	S50FLSM0405	4	5	12.5	16	7	7.5	66.8	M2/M2.5
S50FLRM0406	S50FLSM0406	4	6	12.5	16	7	7.5	66.8	M2/M2.5
S50FLRM0505	S50FLSM0505	5	5	16	16	7.5	7.5	67.3	M2.5
S50FLRM0506	S50FLSM0506	5	6	16	16	7.5	7.5	67.3	M2.5
S50FLRM0606	S50FLSM0606	6	6	16	16	7.5	7.5	67.3	M2.5