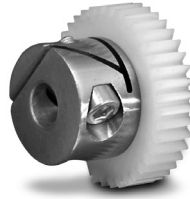
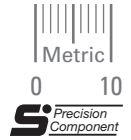


ISO CLASS 7
5 mm FACE WIDTH
5, 8 & mm BORE
20° PRESSURE ANGLE



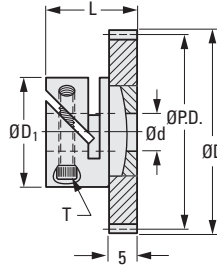
> MATERIAL:
Gear – Acetal
Hub – 303 Stainless Steel

> SPECIFICATIONS:

For Fairloc® Type Hub Gear

d Bore Ref.	T	D ₁	L
5	M2.5	14	13.5
8	M3	17	14.8

Available as special order:
14-1/2° P.A., teeth not listed
or different bore size, or
assembled onto pin type hub.



**METRIC COMPONENT
CATALOG NUMBER**

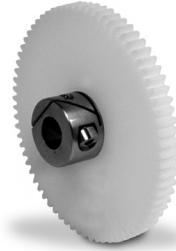
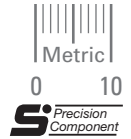
S 1 V Z 0 5 M T 0 5

No. of
Teeth
Code

Bore Code	d Bore
05	5 (H7)
08	8 (H7)

No. of Teeth Code	No. of Teeth	P.D.	D Dia.
028	28	14	15
029	29	14.5	15.5
030	30	15	16
032	32	16	17
036	36	18	19
040	40	20	21
044	44	22	23
045	45	22.5	23.5
048	48	24	25
050	50	25	26
056	56	28	29
060	60	30	31
064	64	32	33
068	68	34	35
070	70	35	36
072	72	36	37
075	75	37.5	38.5
080	80	40	41
084	84	42	43
090	90	45	46
092	92	46	47
096	96	48	49
100	100	50	51
110	110	55	56
120	120	60	61
138	138	69	70
144	144	72	73
168	168	84	85
180	180	90	91
186	186	93	94

ISO CLASS 7
5 mm FACE WIDTH
5 & 8 mm BORE
20° PRESSURE ANGLE

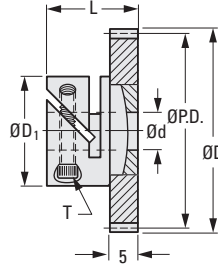


> MATERIAL:
Gear – Acetal
Hub – 303 Stainless Steel

> SPECIFICATIONS:
For Fairloc® Type Hub Gear

d Bore Ref.	T	D ₁	L
5	M2.5	14	13.5
8	M3	17	14.8

Available as special order:
14-1/2° P.A., teeth not listed
or different bore size, or
assembled onto pin type hub.



METRIC COMPONENT CATALOG NUMBER

S 1 V Z 0 8 M T 0 5

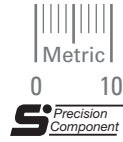
No. of
Teeth
Code

Bore Code	d Bore
05	5 (H7)
08	8 (H7)

No. of Teeth Code	No. of Teeth	P.D.	D Dia.
020	20	16	17.6
021	21	16.8	18.4
023	23	18.4	20
024	24	19.2	20.8
025	25	20	21.6
026	26	20.8	22.4
028	28	22.4	24
030	30	24	25.6
032	32	25.6	27.2
036	36	28.8	30.4
040	40	32	33.6
042	42	33.6	35.2
044	44	35.2	36.8
045	45	36	37.6
046	46	36.8	38.4
048	48	38.4	40
050	50	40	41.6
052	52	41.6	43.2
056	56	44.8	46.4
060	60	48	49.6
064	64	51.2	52.8
066	66	52.8	54.4
072	72	57.6	59.2
080	80	64	65.6
084	84	67.2	68.8
088	88	70.4	72
090	90	72	73.6
092	92	73.6	75.2
096	96	76.8	78.4
100	100	80	81.6
104	104	83.2	84.8
108	108	86.4	88
112	112	89.6	91.2
124	124	99.2	100.8

ISO CLASS 7
 5 mm FACE WIDTH
 5 & 8 mm BORE
 20° PRESSURE ANGLE

PHONE: 516.328.3300 • FAX: 516.326.8827 • WWW.SDP-SI.COM



> MATERIAL:

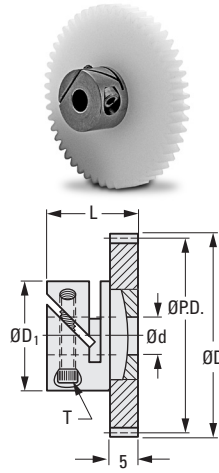
Gear – Acetal
Hub – 303 Stainless Steel

> SPECIFICATIONS:

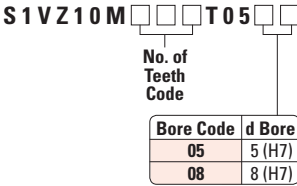
For Fairloc® Type Hub Gear

d Bore Ref.	T	D ₁	L
5	M2.5	14	13.5
8	M3	17	14.8

Available as special order:
 14-1/2° P.A., teeth not listed
 or different bore size, or
 assembled onto pin type hub.



METRIC COMPONENT CATALOG NUMBER



No. of Teeth Code	No. of Teeth	P.D.	D Dia.
015	15	15	17
016	16	16	18
018	18	18	20
020	20	20	22
021	21	21	23
022	22	22	24
023	23	23	25
024	24	24	26
025	25	25	27
028	28	28	30
030	30	30	32
032	32	32	34
035	35	35	37
036	36	36	38
040	40	40	42
042	42	42	44
045	45	45	47
046	46	46	48
048	48	48	50
050	50	50	52
052	52	52	54
056	56	56	58
060	60	60	62
064	64	64	66
066	66	66	68
069	69	69	71
070	70	70	72
072	72	72	74
078	78	78	80
080	80	80	82
084	84	84	86
090	90	90	92
093	93	93	95
100	100	100	102

- I
- R
- T
- 1**
- 2
- 3
- 4
- 5
- 6
- 7
- 8
- 9
- 10
- 11
- 12
- 13
- 14
- 15
- A