

NONMETALLIC FAIRLOC® HUB SPUR GEARS • 72 PITCH



AGMA 10
 3/16 FACE
 3/16 & 1/4 BORE
 20° PRESSURE ANGLE

PHONE: 516.328.3300 • FAX: 516.326.8827 • WWW.SDP-SI.COM



MATERIAL:

Gear - Acetal
Hub - 303 Stainless Steel

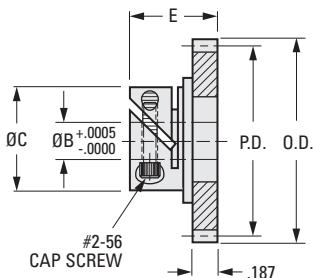
SPECIFICATIONS:

For Fairloc® Type Hub Gear

B Bore Ref.	C	E
.1873	.438	.453
.2498	.530	.483

Available on special order:
 14-1/2° P.A., teeth
 not listed or different bore size.

This product is also available with
 pin type hubs.
 See our Web site: www.sdp-si.com



INCH COMPONENT CATALOG NUMBER

S1V8 Z - 072 D S

No. of
Teeth
Code

Bore Code	B Bore
4	.1873
6	.2498

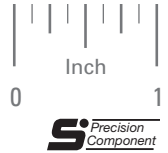
No. of Teeth Code	No. of Teeth	P.D.	O.D.
040	40	.5555	.583
041	41	.5694	.597
042	42	.5833	.611
043	43	.5972	.625
044	44	.6111	.639
045	45	.6250	.653
046	46	.6388	.667
048	48	.6666	.694
050	50	.6944	.722
054	54	.7500	.778
060	60	.8333	.861
066	66	.9166	.944
072	72	1.0000	1.028
075	75	1.0416	1.069
080	80	1.1111	1.139
084	84	1.1666	1.194
096	96	1.3333	1.361
099	99	1.3750	1.403
100	100	1.3888	1.417
108	108	1.5000	1.528
120	120	1.6666	1.694
126	126	1.7500	1.778
127	127	1.7638	1.792
132	132	1.8333	1.861
135	135	1.8750	1.903
140	140	1.9444	1.972
144	144	2.0000	2.028
150	150	2.0833	2.111
160	160	2.2222	2.250
180	180	2.5000	2.528
198	198	2.7500	2.778

NONMETALLIC SPUR GEARS, FAIRLOC® HUB • 64 PITCH



AGMA 10
 3/16 FACE
 3/16 & 1/4 BORE
 20° PRESSURE ANGLE

PHONE: 516.328.3300 • FAX: 516.326.8827 • WWW.SDP-SI.COM



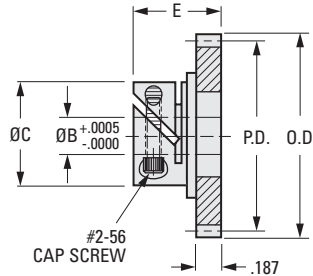
MATERIAL:
 Gear - Acetal
 Hub - 303 Stainless Steel

SPECIFICATIONS:
 For Fairloc® Type Hub Gear

B Bore Ref.	C	E
.1873	.438	.453
.2498	.530	.483

Available on special order:
 14-1/2° pressure angle, teeth
 not listed or different bore size.

This product is also available with
 pin type hubs.
 See our Web site: www.sdp-si.com



INCH COMPONENT CATALOG NUMBER

S 1 V 8 Z - 0 6 4 D S
 No. of Teeth Code

Bore Code	B Bore
4	.1873
6	.2498

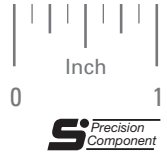
No. of Teeth Code	No. of Teeth	P.D.	O.D.
036	36	.5625	.594
037	37	.5781	.609
038	38	.5938	.625
040	40	.6250	.656
042	42	.6563	.688
044	44	.6875	.719
046	46	.7188	.750
048	48	.7500	.781
050	50	.7813	.813
056	56	.8750	.906
060	60	.9375	.969
064	64	1.0000	1.031
072	72	1.1250	1.156
074	74	1.1563	1.188
080	80	1.2500	1.281
084	84	1.3125	1.344
088	88	1.3750	1.406
090	90	1.4063	1.438
096	96	1.5000	1.531
100	100	1.5625	1.594
112	112	1.7500	1.781
120	120	1.8750	1.906
127	127	1.9844	2.016
128	128	2.0000	2.031
144	144	2.2500	2.281
152	152	2.3750	2.406
160	160	2.5000	2.531
168	168	2.6250	2.656
176	176	2.7500	2.781
184	184	2.8750	2.906
192	192	3.0000	3.031
224	224	3.5000	3.531

NONMETALLIC FAIRLOC® HUB SPUR GEARS • 48 PITCH



AGMA 10
3/16 FACE
3/16 & 1/4 BORE
20° PRESSURE ANGLE

PHONE: 516.328.3300 • FAX: 516.326.8827 • WWW.SDP-SI.COM



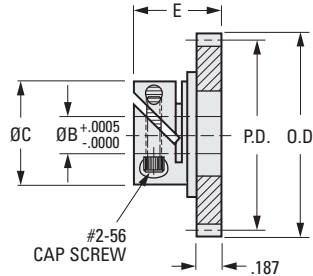
MATERIAL:
Gear - Acetal
Hub - 303 Stainless Steel

SPECIFICATIONS:
For Fairloc® Type Hub Gear

B Bore Ref.	C	E
.1873	.438	.453
.2498	.530	.483

Available on special order:
14-1/2° P.A., teeth not listed
or different bore size.

This product is also available with
pin type hubs.
See our Web site: www.sdp-si.com



INCH COMPONENT CATALOG NUMBER

S1V8 Z-048DS

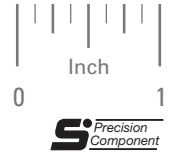
Bore Code	B Bore
4	.1873
6	.2498

No. of
Teeth
Code

No. of Teeth Code	No. of Teeth	P.D.	O.D.
028	28	.5833	.625
029	29	.6042	.646
030	30	.6250	.667
032	32	.6667	.708
034	34	.7083	.750
036	36	.7500	.792
038	38	.7917	.833
040	40	.8333	.875
042	42	.8750	.917
044	44	.9167	.958
046	46	.9583	1.000
048	48	1.0000	1.042
050	50	1.0417	1.083
055	55	1.1458	1.188
056	56	1.1667	1.208
060	60	1.2500	1.292
064	64	1.3333	1.375
068	68	1.4167	1.458
072	72	1.5000	1.542
075	75	1.5625	1.604
080	80	1.6667	1.708
084	84	1.7500	1.792
090	90	1.8750	1.917
092	92	1.9167	1.958
096	96	2.0000	2.042
100	100	2.0833	2.125
110	110	2.2917	2.333
120	120	2.5000	2.542
132	132	2.7500	2.792
138	138	2.8750	2.917
144	144	3.0000	3.042
156	156	3.2500	3.292
168	168	3.5000	3.542
180	180	3.7500	3.792
186	186	3.8750	3.917

AGMA 10
3/16 FACE
3/16 & 1/4 BORE
20° PRESSURE ANGLE

PHONE: 516.328.3300 • FAX: 516.326.8827 • WWW.SDP-SI.COM



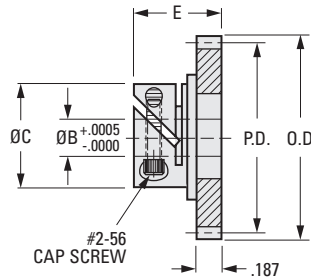
► **MATERIAL:**
Gear - Acetal
Hub - 303 Stainless Steel

► **SPECIFICATIONS:**
For Fairloc® Type Hub Gear

B Bore Ref.	C	E
.1873	.438	.453
.2498	.530	.483

Available on special order:
14-1/2° P.A., teeth not listed
or different bore size.

This product is also available with
pin type hubs.
See our Web site: www.sdp-si.com



**INCH COMPONENT
CATALOG NUMBER**

S1V8 Z-032DS

Bore Code	B Bore
4	.1873
6	.2498

No. of
Teeth
Code

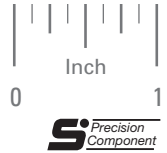
No. of Teeth Code	No. of Teeth	P.D.	O.D.
020	20	.6250	.688
021	21	.6563	.719
022	22	.6875	.750
023	23	.7188	.781
024	24	.7500	.813
025	25	.7813	.844
026	26	.8125	.875
028	28	.8750	.938
030	30	.9375	1.000
032	32	1.0000	1.063
036	36	1.1250	1.188
040	40	1.2500	1.313
042	42	1.3125	1.375
044	44	1.3750	1.438
046	46	1.4375	1.500
048	48	1.5000	1.563
050	50	1.5625	1.625
052	52	1.6250	1.688
056	56	1.7500	1.813
060	60	1.8750	1.938
063	63	1.9688	2.031
064	64	2.0000	2.063
066	66	2.0625	2.125
069	69	2.1563	2.219
072	72	2.2500	2.313
075	75	2.3438	2.406
080	80	2.5000	2.563
084	84	2.6250	2.688
088	88	2.7500	2.813
092	92	2.8750	2.938
096	96	3.0000	3.063
104	104	3.2500	3.313
108	108	3.3750	3.438
112	112	3.5000	3.563
124	124	3.8750	3.938

NONMETALLIC FAIRLOC® HUB SPUR GEARS • 24 PITCH



AGMA 10
 3/16 FACE
 3/16 & 1/4 BORE
 20° PRESSURE ANGLE

PHONE: 516.328.3300 • FAX: 516.326.8827 • WWW.SDP-SI.COM



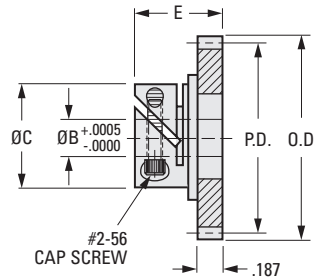
MATERIAL:
 Gear - Acetal
 Hub - 303 Stainless Steel

SPECIFICATIONS:
 For Fairloc® Type Hub Gear

B Bore Ref.	C	E
.1873	.438	.453
.2498	.530	.483

Available on special order:
 14-1/2° P.A., teeth not listed
 or different bore size.

This product is also available with
 pin type hubs.
 See our Web site: www.sdp-si.com



INCH COMPONENT CATALOG NUMBER

S 1 V 8 Z - 0 2 4 D S

Bore Code	B Bore
4	.1873
6	.2498

No. of
Teeth
Code

No. of Teeth Code	No. of Teeth	P.D.	O.D.
015	15	.6250	.708
016	16	.6667	.750
017	17	.7083	.792
018	18	.7500	.833
019	19	.7917	.875
020	20	.8333	.917
021	21	.8750	.958
022	22	.9167	1.000
023	23	.9583	1.042
024	24	1.0000	1.083
025	25	1.0417	1.125
028	28	1.1667	1.250
030	30	1.2500	1.333
032	32	1.3333	1.417
033	33	1.3750	1.458
036	36	1.5000	1.583
040	40	1.6667	1.750
042	42	1.7500	1.833
045	45	1.8750	1.958
046	46	1.9167	2.000
048	48	2.0000	2.083
050	50	2.0833	2.167
052	52	2.1667	2.250
055	55	2.2917	2.375
056	56	2.3333	2.417
057	57	2.3750	2.458
060	60	2.5000	2.583
064	64	2.6667	2.750
066	66	2.7500	2.833
069	69	2.8750	2.958
072	72	3.0000	3.083
078	78	3.2500	3.333
084	84	3.5000	3.583
090	90	3.7500	3.833
093	93	3.8750	3.958