

**> MATERIAL:**

303 Stainless Steel

**> SPECIFICATIONS:**

Bore Tolerance (H7):

3 mm +0.01/0

4, 5 & 6 mm +0.012/0

8 & 10 mm +0.015/0

12 mm +0.018/0

Shaft Tolerance (g6):

3 mm -0.002/-0.008

4, 5 & 6 mm -0.004/-0.012

8 & 10 mm -0.005/-0.014

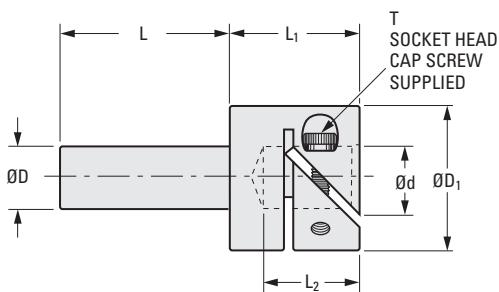
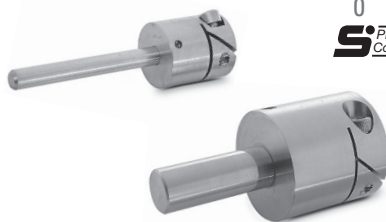
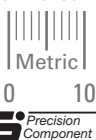
12 mm -0.006/-0.017

d bores and D shaft concentric to within 0.025 mm T.I.R.

Fairloc® hubs require controlled mating shaft tolerances: g6, h6 or h7.

**> MODIFICATIONS:**

Metric to inch or inch to metric connections, other sizes and materials, available on special order.



**METRIC COMPONENT**

Catalog Number	d Bore H7	D Dia. g6	D <sub>1</sub> Dia.	L	L <sub>1</sub>	L <sub>2</sub>	T	Clear. Radius	Max. Torque N • m
S52FCYM030030	3	3	11	25	15	9	M2	6.4	0.45
S52FCYM030040	3	4	11	25	15	9	M2	6.4	0.45
S52FCYM030050	3	5	11	25	15	9	M2	6.4	0.45
S52FCYM040030	4	3	14	25	15	9	M2.5	8.3	0.57
S52FCYM040040	4	4	14	25	15	9	M2.5	8.3	0.57
S52FCYM040050	4	5	14	25	15	9	M2.5	8.3	0.57
S52FCYM050030	5	3	14	25	15	9	M2.5	8.3	0.9
S52FCYM050040	5	4	14	25	15	9	M2.5	8.3	0.9
S52FCYM050050	5	5	14	25	15	9	M2.5	8.3	0.9
S52FCYM050060	5	6	14	25	15	9	M2.5	8.3	0.9
S52FCYM060040	6	4	17	25	18	11	M3	11.3	1.3
S52FCYM060050	6	5	17	25	18	11	M3	11.3	1.3
S52FCYM060060	6	6	17	25	18	11	M3	11.3	1.3
S52FCYM060080	6	8	17	25	18	11	M3	11.3	1.3
S52FCYM060100	6	10	17	25	18	11	M3	11.3	1.3
S52FCYM080050	8	5	17	25	18	11	M3	11.3	2.6
S52FCYM080060	8	6	17	25	18	11	M3	11.3	2.6
S52FCYM080080	8	8	17	25	18	11	M3	11.3	2.6
S52FCYM080100	8	10	17	25	18	11	M3	11.3	2.6
S52FCYM080120	8	12	17	25	18	11	M3	11.3	2.6
S52FCYM100060	10	6	24	30	23	15	M4	14	3.5
S52FCYM100080	10	8	24	30	23	15	M4	14	3.5
S52FCYM100100	10	10	24	30	23	15	M4	14	3.5
S52FCYM100120	10	12	24	30	23	15	M4	14	3.5
S52FCYM120080	12	8	26	30	26	18	M4	15.1	5.1
S52FCYM120100	12	10	26	30	26	18	M4	15.1	5.1
S52FCYM120120	12	12	26	30	26	18	M4	15.1	5.1