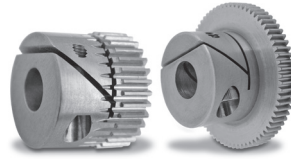
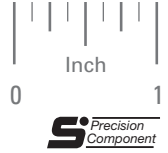


AGMA 10  
 .197 & .250 FACE WIDTH  
 20° PRESSURE ANGLE

PHONE: 516.328.3300 • FAX: 516.326.8827 • WWW.SDP-SI.COM



► **MATERIAL:**  
 303 Stainless Steel

► **SPECIFICATIONS:**  
 Socket Head Cap Screw Supplied.  
 Fairloc® hubs require controlled  
 shaft tolerances. Suggested  
 clearance fit between the bore and  
 the shaft is .0001/.0008.

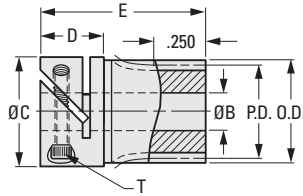


Fig. 1

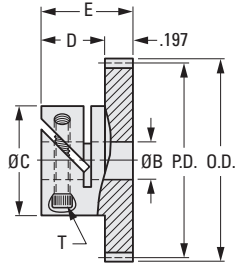


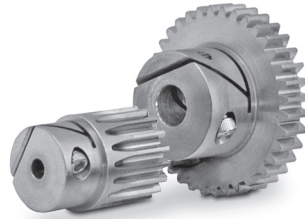
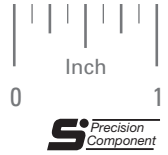
Fig. 2

**INCH COMPONENT**

Catalog Number	No. of Teeth	P.D.	O.D.	B Bore + .0005 - .0000	E	C Dia.	D	T	Hub Clear. Rad.
<b>Fig. 1</b>									
S1VS48-016F1608	16	.3333	.375	.1248	.866	.551	.315	#2-56	.327
S1VS48-018F1608	18	.3750	.417	.1248	.866	.551	.315	#2-56	.327
S1VS48-020F1608	20	.4167	.458	.1248	.866	.551	.315	#2-56	.327
S1VS48-024F1612	24	.5000	.542	.1873	.866	.551	.315	#2-56	.327
S1VS48-025F1612	25	.5208	.563	.1873	.866	.551	.315	#2-56	.327
S1VS48-028F1612	28	.5833	.625	.1873	.866	.551	.315	#2-56	.327
<b>Fig. 2</b>									
S1VS48-030F1316	30	.6250	.667	.2498	.591	.669	.394	#2-56	.445
S1VS48-032F1316	32	.6667	.708	.2498	.591	.669	.394	#2-56	.445
S1VS48-036F1316	36	.7500	.792	.2498	.591	.669	.394	#2-56	.445
S1VS48-040F1316	40	.8333	.875	.2498	.591	.669	.394	#2-56	.445
S1VS48-045F1316	45	.9375	.979	.2498	.591	.669	.394	#2-56	.445
S1VS48-048F1316	48	1.0000	1.042	.2498	.591	.669	.394	#2-56	.445
S1VS48-050F1316	50	1.0417	1.083	.2498	.591	.669	.394	#2-56	.445
S1VS48-054F1316	54	1.1250	1.167	.2498	.591	.669	.394	#2-56	.445
S1VS48-056F1316	56	1.1667	1.208	.2498	.591	.669	.394	#2-56	.445
S1VS48-060F1316	60	1.2500	1.292	.2498	.591	.669	.394	#2-56	.445
S1VS48-064F1324	64	1.3333	1.375	.3747	.750	.945	.551	#6-32	.551
S1VS48-070F1324	70	1.4583	1.500	.3747	.750	.945	.551	#6-32	.551
S1VS48-072F1324	72	1.5000	1.542	.3747	.750	.945	.551	#6-32	.551
S1VS48-075F1324	75	1.5625	1.604	.3747	.750	.945	.551	#6-32	.551
S1VS48-080F1324	80	1.6667	1.708	.3747	.750	.945	.551	#6-32	.551
S1VS48-090F1324	90	1.8750	1.917	.3747	.750	.945	.551	#6-32	.551
S1VS48-096F1324	96	2.0000	2.042	.3747	.750	.945	.551	#6-32	.551
S1VS48-100F1324	100	2.0833	2.125	.3747	.750	.945	.551	#6-32	.551
S1VS48-112F1324	112	2.3333	2.375	.3747	.750	.945	.551	#6-32	.551
S1VS48-120F1324	120	2.5000	2.542	.3747	.750	.945	.551	#6-32	.551

AGMA 10  
 .197 & .250 FACE WIDTH  
 20° PRESSURE ANGLE

PHONE: 516.328.3300 • FAX: 516.326.8827 • WWW.SDP-SI.COM



► **MATERIAL:**  
 303 Stainless Steel

► **SPECIFICATIONS:**  
 Socket Head Cap Screw Supplied.  
 Fairloc® hubs require controlled shaft tolerances. Suggested clearance fit between the bore and the shaft is .0001/.0008.

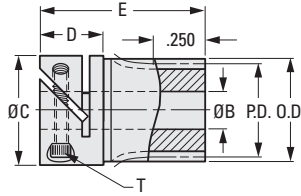


Fig. 1

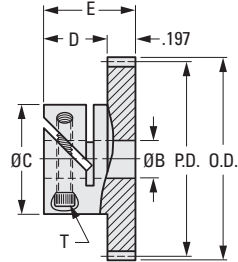


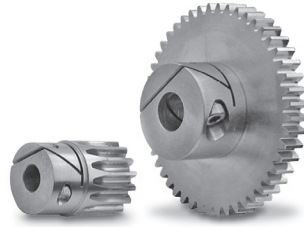
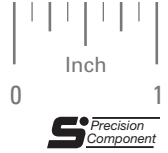
Fig. 2

**INCH COMPONENT**

Catalog Number	No. of Teeth	P.D.	O.D.	B Bore +.0005 -.0000	E	C Dia.	D	T	Hub Clear. Rad.
<b>Fig. 1</b>									
S1VS32-014F1608	14	.4375	.500	.1248	.866	.551	.315	#2-56	.326
S1VS32-015F1608	15	.4688	.531	.1248	.866	.551	.315	#2-56	.326
S1VS32-016F1608	16	.5000	.563	.1248	.866	.551	.315	#2-56	.326
S1VS32-018F1608	18	.5625	.625	.1248	.866	.551	.315	#2-56	.326
<b>Fig. 2</b>									
S1VS32-020F1312	20	.6250	.688	.1873	.512	.551	.315	#2-56	.326
S1VS32-024F1312	24	.7500	.813	.1873	.512	.551	.315	#2-56	.326
S1VS32-025F1312	25	.7813	.844	.1873	.512	.551	.315	#2-56	.326
S1VS32-028F1312	28	.8750	.938	.1873	.512	.551	.315	#2-56	.326
S1VS32-030F1312	30	.9375	1.000	.1873	.512	.551	.315	#2-56	.326
S1VS32-032F1312	32	1.0000	1.063	.1873	.512	.551	.315	#2-56	.326
S1VS32-036F1316	36	1.1250	1.188	.2498	.591	.669	.394	#2-56	.445
S1VS32-040F1316	40	1.2500	1.313	.2498	.591	.669	.394	#2-56	.445
S1VS32-045F1316	45	1.4063	1.469	.2498	.591	.669	.394	#2-56	.445
S1VS32-048F1316	48	1.5000	1.563	.2498	.591	.669	.394	#2-56	.445
S1VS32-050F1316	50	1.5625	1.625	.2498	.591	.669	.394	#2-56	.445
S1VS32-054F1316	54	1.6875	1.750	.2498	.591	.669	.394	#2-56	.445
S1VS32-056F1316	56	1.7500	1.813	.2498	.591	.669	.394	#2-56	.445
S1VS32-060F1324	60	1.8750	1.938	.3747	.750	.945	.551	#6-32	.551
S1VS32-064F1324	64	2.0000	2.063	.3747	.750	.945	.551	#6-32	.551
S1VS32-070F1324	70	2.1875	2.250	.3747	.750	.945	.551	#6-32	.551
S1VS32-072F1324	72	2.2500	2.313	.3747	.750	.945	.551	#6-32	.551
S1VS32-075F1324	75	2.3438	2.406	.3747	.750	.945	.551	#6-32	.551
S1VS32-080F1324	80	2.5000	2.563	.3747	.750	.945	.551	#6-32	.551
S1VS32-090F1324	90	2.8125	2.875	.3747	.750	.945	.551	#6-32	.551
S1VS32-096F1324	96	3.0000	3.063	.3747	.750	.945	.551	#6-32	.551
S1VS32-100F1324	100	3.1250	3.188	.3747	.750	.945	.551	#6-32	.551

AGMA 10  
 .236 & .313 FACE WIDTH  
 20° PRESSURE ANGLE

PHONE: 516.328.3300 • FAX: 516.326.8827 • WWW.SDP-SI.COM



► **MATERIAL:**  
 303 Stainless Steel

► **SPECIFICATIONS:**  
 Socket Head Cap Screw Supplied.  
 Fairloc® hubs require controlled  
 shaft tolerances. Suggested  
 clearance fit between the bore and  
 the shaft is .0001/.0008.

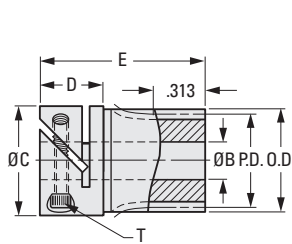


Fig. 1

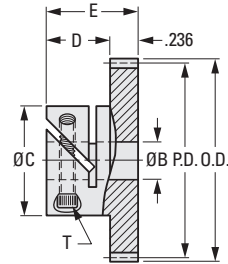


Fig. 2

**INCH COMPONENT**

Catalog Number	No. of Teeth	P.D.	O.D.	B Bore +0.0005 -0.0000	E	C Dia.	D	T	Hub Clear. Rad.
<b>Fig. 1</b>									
S1VS24-014F2016	14	.5833	.667	.2498	1.000	.669	.394	#2-56	.445
S1VS24-015F2016	15	.6250	.708	.2498	1.000	.669	.394	#2-56	.445
S1VS24-016F2016	16	.6667	.750	.2498	1.000	.669	.394	#2-56	.445
S1VS24-018F2016	18	.7500	.833	.2498	1.000	.669	.394	#2-56	.445
<b>Fig. 2</b>									
S1VS24-020F1516	20	.8333	.917	.2498	.630	.669	.394	#2-56	.445
S1VS24-024F1516	24	1.0000	1.083	.2498	.630	.669	.394	#2-56	.445
S1VS24-025F1516	25	1.0417	1.125	.2498	.630	.669	.394	#2-56	.445
S1VS24-028F1516	28	1.1667	1.250	.2498	.630	.669	.394	#2-56	.445
S1VS24-030F1516	30	1.2500	1.333	.2498	.630	.669	.394	#2-56	.445
S1VS24-032F1516	32	1.3333	1.417	.2498	.630	.669	.394	#2-56	.445
S1VS24-036F1516	36	1.5000	1.583	.2498	.630	.669	.394	#2-56	.445
S1VS24-040F1516	40	1.6667	1.750	.2498	.630	.669	.394	#2-56	.445
S1VS24-045F1524	45	1.8750	1.958	.3747	.787	.945	.551	#6-32	.551
S1VS24-048F1524	48	2.0000	2.083	.3747	.787	.945	.551	#6-32	.551
S1VS24-050F1524	50	2.0833	2.167	.3747	.787	.945	.551	#6-32	.551
S1VS24-056F1524	56	2.3333	2.417	.3747	.787	.945	.551	#6-32	.551
S1VS24-060F1524	60	2.5000	2.583	.3747	.787	.945	.551	#6-32	.551
S1VS24-064F1524	64	2.6667	2.750	.3747	.787	.945	.551	#6-32	.551
S1VS24-070F1524	70	2.9167	3.000	.3747	.787	.945	.551	#6-32	.551
S1VS24-072F1524	72	3.0000	3.083	.3747	.787	.945	.551	#6-32	.551
S1VS24-090F1524	90	3.7500	3.833	.3747	.787	.945	.551	#6-32	.551
S1VS24-100F1524	100	4.1667	4.250	.3747	.787	.945	.551	#6-32	.551