

ISO CLASS 7  
5 & 7 mm FACE  
20° PRESSURE ANGLE

PHONE: 516.328.3300 • FAX: 516.326.8827 • WWW.SDP-SI.COM

► **MATERIAL:**  
303 Stainless Steel

► **SPECIFICATIONS:**  
Socket Head Cap Screw Supplied.  
Gears larger than 90 teeth have two-piece construction.  
Fairloc® hubs require controlled shaft tolerances. Suggested tolerance according to g6, h6 or h7.

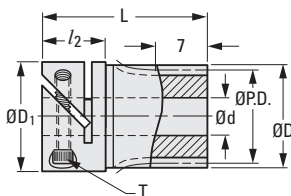
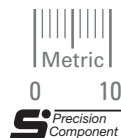
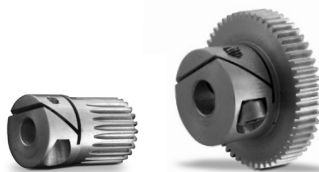


Fig. 1

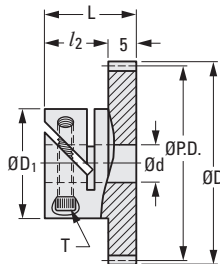


Fig. 2

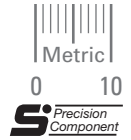
**METRIC COMPONENT**

Catalog Number	No. of Teeth	P.D.	D Dia.	d Bore H7	d Tolerance	L	D <sub>1</sub> Dia.	l <sub>2</sub>	T	Hub Clear. Rad.
<b>Fig. 1</b>										
S1VS05M016F0704	16	8	9	4	+0.012/0	22	14	8	M2.5	8.3
S1VS05M018F0704	18	9	10	4	+0.012/0	22	14	8	M2.5	8.3
S1VS05M020F0704	20	10	11	4	+0.012/0	22	14	8	M2.5	8.3
S1VS05M024F0705	24	12	13	5	+0.012/0	22	14	8	M2.5	8.3
S1VS05M025F0705	25	12.5	13.5	5	+0.012/0	22	14	8	M2.5	8.3
S1VS05M028F0705	28	14	15	5	+0.012/0	22	14	8	M2.5	8.3
S1VS05M030F0705	30	15	16	5	+0.012/0	22	14	8	M2.5	8.3
<b>Fig. 2</b>										
S1VS05M032F0506	32	16	17	6	+0.012/0	15	17	10	M3	11.3
S1VS05M036F0506	36	18	19	6	+0.012/0	15	17	10	M3	11.3
S1VS05M040F0506	40	20	21	6	+0.012/0	15	17	10	M3	11.3
S1VS05M045F0506	45	22.5	23.5	6	+0.012/0	15	17	10	M3	11.3
S1VS05M048F0506	48	24	25	6	+0.012/0	15	17	10	M3	11.3
S1VS05M050F0506	50	25	26	6	+0.012/0	15	17	10	M3	11.3
S1VS05M054F0506	54	27	28	6	+0.012/0	15	17	10	M3	11.3
S1VS05M056F0506	56	28	29	6	+0.012/0	15	17	10	M3	11.3
S1VS05M060F0508	60	30	31	8	+0.015/0	15	17	10	M3	11.3
S1VS05M064F0508	64	32	33	8	+0.015/0	15	17	10	M3	11.3
S1VS05M070F0508	70	35	36	8	+0.015/0	15	17	10	M3	11.3
S1VS05M072F0508	72	36	37	8	+0.015/0	15	17	10	M3	11.3
S1VS05M075F0508	75	37.5	38.5	8	+0.015/0	15	17	10	M3	11.3
S1VS05M080F0510	80	40	41	10	+0.015/0	19	24	14	M4	14
S1VS05M090F0510	90	45	46	10	+0.015/0	19	24	14	M4	14
S1VS05M096F0510	96	48	49	10	+0.015/0	19	24	14	M4	14
S1VS05M100F0510	100	50	51	10	+0.015/0	19	24	14	M4	14
S1VS05M112F0510	112	56	57	10	+0.015/0	19	24	14	M4	14
S1VS05M120F0510	120	60	61	10	+0.015/0	19	24	14	M4	14

I  
R  
T  
1  
2  
3  
4  
5  
6  
7  
8  
9  
10  
11  
12  
13  
14  
15  
A

ISO CLASS 7  
5 & 7 mm FACE  
20° PRESSURE ANGLE

PHONE: 516.328.3300 • FAX: 516.326.8827 • WWW.SDP-SI.COM



➤ **MATERIAL:**  
303 Stainless Steel

➤ **SPECIFICATIONS:**  
Socket Head Cap Screw Supplied.  
Gears larger than 60 teeth have two-piece construction.  
Fairloc® hubs require controlled shaft tolerances. Suggested tolerance according to g6, h6 or h7.

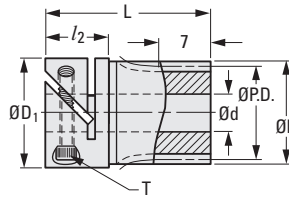
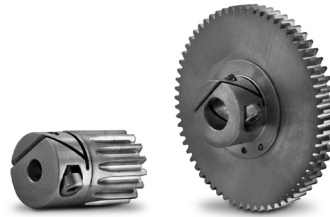


Fig. 1

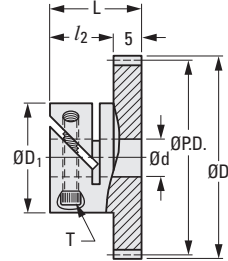
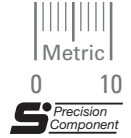


Fig. 2

**METRIC COMPONENT**

Catalog Number	No. of Teeth	P.D.	D Dia.	d Bore H7	d Tolerance	L	D <sub>1</sub> Dia.	l <sub>2</sub>	T	Hub Clear. Rad.
<b>Fig. 1</b>										
S1VS08M014F0704	14	11.2	12.8	4	+0.012/0	22	14	8	M2.5	8.3
S1VS08M015F0704	15	12	13.6	4	+0.012/0	22	14	8	M2.5	8.3
S1VS08M016F0704	16	12.8	14.4	4	+0.012/0	22	14	8	M2.5	8.3
S1VS08M018F0704	18	14.4	16	4	+0.012/0	22	14	8	M2.5	8.3
<b>Fig. 2</b>										
S1VS08M020F0504	20	16	17.6	4	+0.012/0	13	14	8	M2.5	8.3
S1VS08M022F0504	22	17.6	19.2	4	+0.012/0	13	14	8	M2.5	8.3
S1VS08M024F0505	24	19.2	20.8	5	+0.012/0	13	14	8	M2.5	8.3
S1VS08M025F0505	25	20	21.6	5	+0.012/0	13	14	8	M2.5	8.3
S1VS08M028F0505	28	22.4	24	5	+0.012/0	13	14	8	M2.5	8.3
S1VS08M030F0505	30	24	25.6	5	+0.012/0	13	14	8	M2.5	8.3
S1VS08M032F0505	32	25.6	27.2	5	+0.012/0	13	14	8	M2.5	8.3
S1VS08M036F0506	36	28.8	30.4	6	+0.012/0	15	17	10	M3	11.3
S1VS08M040F0506	40	32	33.6	6	+0.012/0	15	17	10	M3	11.3
S1VS08M045F0506	45	36	37.6	6	+0.012/0	15	17	10	M3	11.3
S1VS08M048F0506	48	38.4	40	6	+0.012/0	15	17	10	M3	11.3
S1VS08M050F0506	50	40	41.6	6	+0.012/0	15	17	10	M3	11.3
S1VS08M054F0506	54	43.2	44.8	6	+0.012/0	15	17	10	M3	11.3
S1VS08M056F0506	56	44.8	46.4	6	+0.012/0	15	17	10	M3	11.3
S1VS08M060F0508	60	48	49.6	8	+0.015/0	15	17	10	M3	11.3
S1VS08M064F0508	64	51.2	52.8	8	+0.015/0	15	17	10	M3	11.3
S1VS08M072F0508	72	57.6	59.2	8	+0.015/0	15	17	10	M3	11.3
S1VS08M080F0510	80	64	65.6	10	+0.015/0	19	24	14	M4	14
S1VS08M090F0510	90	72	73.6	10	+0.015/0	19	24	14	M4	14
S1VS08M100F0510	100	80	81.6	10	+0.015/0	19	24	14	M4	14

ISO CLASS 7  
6 & 8 mm FACE  
20° PRESSURE ANGLE



➤ **MATERIAL:**  
303 Stainless Steel

➤ **SPECIFICATIONS:**  
Socket Head Cap Screw Supplied.  
Gears larger than 45 teeth have two-piece construction.  
Fairloc® hubs require controlled shaft tolerances. Suggested tolerance according to g6, h6 or h7.

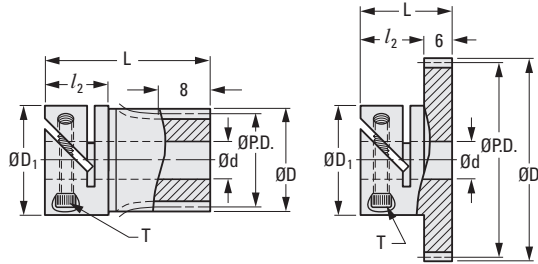
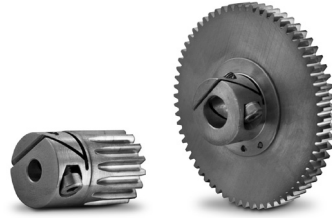


Fig. 1

Fig. 2

**METRIC COMPONENT**

Catalog Number	No. of Teeth	P.D.	D Dia.	d Bore H7	d Tolerance	L	D <sub>1</sub> Dia.	l <sub>2</sub>	T	Hub Clear. Rad.
<b>Fig. 1</b>										
S1VS10M014F0806	14	14	16	6	+0.012/0	25	17	10	M3	11.3
S1VS10M015F0806	15	15	17	6	+0.012/0	25	17	10	M3	11.3
S1VS10M016F0806	16	16	18	6	+0.012/0	25	17	10	M3	11.3
S1VS10M018F0806	18	18	20	6	+0.012/0	25	17	10	M3	11.3
<b>Fig. 2</b>										
S1VS10M020F0606	20	20	22	6	+0.012/0	16	17	10	M3	11.3
S1VS10M024F0606	24	24	26	6	+0.012/0	16	17	10	M3	11.3
S1VS10M025F0606	25	25	27	6	+0.012/0	16	17	10	M3	11.3
S1VS10M028F0606	28	28	30	6	+0.012/0	16	17	10	M3	11.3
S1VS10M030F0608	30	30	32	8	+0.015/0	16	17	10	M3	11.3
S1VS10M032F0608	32	32	34	8	+0.015/0	16	17	10	M3	11.3
S1VS10M035F0608	35	35	37	8	+0.015/0	16	17	10	M3	11.3
S1VS10M036F0608	36	36	38	8	+0.015/0	16	17	10	M3	11.3
S1VS10M040F0608	40	40	42	8	+0.015/0	16	17	10	M3	11.3
S1VS10M045F0608	45	45	47	8	+0.015/0	16	17	10	M3	11.3
S1VS10M048F0608	48	48	50	8	+0.015/0	16	17	10	M3	11.3
S1VS10M050F0610	50	50	52	10	+0.015/0	20	24	14	M4	14
S1VS10M056F0610	56	56	58	10	+0.015/0	20	24	14	M4	14
S1VS10M060F0610	60	60	62	10	+0.015/0	20	24	14	M4	14
S1VS10M064F0610	64	64	66	10	+0.015/0	20	24	14	M4	14
S1VS10M070F0610	70	70	72	10	+0.015/0	20	24	14	M4	14
S1VS10M072F0610	72	72	74	10	+0.015/0	20	24	14	M4	14
S1VS10M080F0610	80	80	82	10	+0.015/0	20	24	14	M4	14
S1VS10M090F0610	90	90	92	10	+0.015/0	20	24	14	M4	14
S1VS10M100F0610	100	100	102	10	+0.015/0	20	24	14	M4	14