

# FASTLOCK SHAFT COLLARS

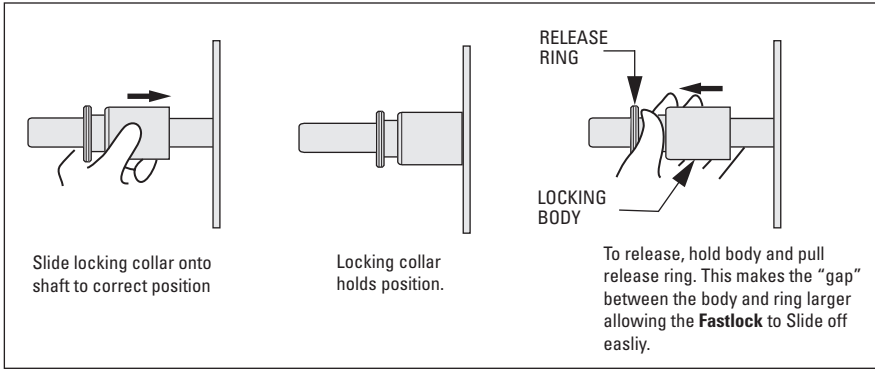
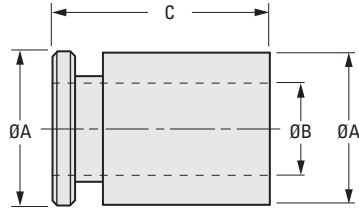


NO TOOLS NEEDED  
USABLE FOR NONHARDENED SHAFTS

PHONE: 516.328.3300 • FAX: 516.326.8827 • WWW.SDP-SI.COM

► **MATERIAL:**

- Inner Body** - 303 Stainless Steel
- Outer Sleeve** - 303 Stainless Steel
- Balls** - 440C Stainless Steel
- Spring** - 302 Stainless Steel



**INCH COMPONENT**

| Catalog Number | A Dia. | B Shaft Dia.<br>+001<br>-015 | C Overall Length | Weight lb. |
|----------------|--------|------------------------------|------------------|------------|
| S25FLY-0250    | .73    | .250                         | 1.00             | .07        |
| S25FLY-0313    | .73    | .3125                        | 1.00             | .07        |
| S25FLY-0375    | .85    | .375                         | 1.78             | .18        |
| S25FLY-0500    | 1.10   | .500                         | 1.78             | .29        |
| S25FLY-0625    | 1.10   | .625                         | 1.78             | .23        |
| S25FLY-0750    | 1.23   | .750                         | 1.78             | .28        |
| S25FLY-0875    | 1.45   | .875                         | 1.78             | .41        |
| S25FLY-1000    | 1.45   | 1.000                        | 1.78             | .32        |
| S25FLY-1250    | 2.23   | 1.250                        | 1.87             | 1.12       |
| S25FLY-1500    | 2.23   | 1.500                        | 1.87             | .87        |
| S25FLY-1625    | 2.35   | 1.625                        | 1.87             | .91        |
| S25FLY-1750    | 2.72   | 1.750                        | 1.87             | 1.42       |
| S25FLY-2000    | 2.95   | 2.000                        | 1.87             | 1.54       |