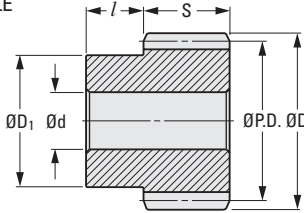


RIGHT- AND LEFT-HAND  
 MODULE 1, 1.5 & 2  
 45° HELIX  
 20° PRESSURE ANGLE



➤ **MATERIAL:**  
 Steel, Tooth  
 Surfaces Induction  
 Hardened to  
 HRC 47...53

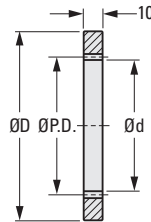


METRIC COMPONENT									
Catalog Number		No of Teeth	P.D.	D Dia.	d Bore H8	d Tolerance	S Face Width	D <sub>1</sub> Hub Dia.	l Hub Proj.
Right-Hand	Left-Hand								
<b>Module 1</b>									
A 1C 7MYK10013R	A 1C 7MYK10013L	13	18.4	20.4	8	+0.022/0	12	15	10
A 1C 7MYK10026R	A 1C 7MYK10026L	26	36.8	38.8	10			32	
<b>Module 1.5</b>									
A 1C 7MYK15013R	A 1C 7MYK15013L	13	27.6	30.6	10	+0.022/0	15	23	10
A 1C 7MYK15026R	A 1C 7MYK15026L	26	55.2	58.2	12			40	
<b>Module 2</b>									
A 1C 7MYK20013R	A 1C 7MYK20013L	13	36.8	40.8	12	+0.027/0	20	30	13
A 1C 7MYK20026R	A 1C 7MYK20026L	26	73.5	77.5	16			55	

**INTERNAL GEARS - MODULE 1**

20° PRESSURE ANGLE

➤ **MATERIAL:**  
 Steel



METRIC COMPONENT				
Catalog Number	No. of Teeth	P.D.	D Dia.	d I.D.
A 1C10MYK10060	60	60	90	58
A 1C10MYK10080	80	80	110	78
A 1C10MYK10090	90	90	120	88
A 1C10MYK10100	100	100	130	98
A 1C10MYK10120	120	120	150	118

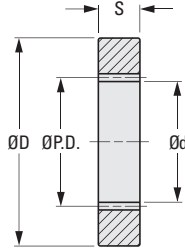
- I
- R
- T
- 1
- 2
- 3
- 4
- 5
- 6
- 7
- 8
- 9
- 10
- 11
- 12
- 13
- 14
- 15
- 16

ISO CLASS 7  
 MODULE 0.5, 0.8 & 1  
 5, 8 & 10 mm FACE WIDTH  
 20° PRESSURE ANGLE

PHONE: 516.328.3300 • FAX: 516.326.8827 • WWW.SDP-SI.COM



► **MATERIAL:**  
 303 Stainless Steel



**METRIC COMPONENT**

Catalog Number	No. of Teeth	P.D.	d I.D. H9	S Face Width js 10	D Dia. h7
<b>Module 0.5</b>					
S1E05ZM05S060	60	30	29	5	50
S1E05ZM05S072	72	36	35	5	50
S1E05ZM05S080	80	40	39	5	50
S1E05ZM05S084	84	42	41	5	75
S1E05ZM05S090	90	45	44	5	75
S1E05ZM05S096	96	48	47	5	75
S1E05ZM05S100	100	50	49	5	75
S1E05ZM05S108	108	54	53	5	75
S1E05ZM05S120	120	60	59	5	75
<b>Module 0.8</b>					
S1E08ZM08S060	60	48	46.4	8	100
S1E08ZM08S072	72	57.6	56	8	100
S1E08ZM08S080	80	64	62.4	8	100
S1E08ZM08S084	84	67.2	65.6	8	100
S1E08ZM08S090	90	72	70.4	8	100
S1E08ZM08S096	96	76.8	75.2	8	100
S1E08ZM08S100	100	80	78.4	8	120
S1E08ZM08S108	108	86.4	84.8	8	120
S1E08ZM08S120	120	96	94.4	8	120
<b>Module 1</b>					
S1E10ZM10S060	60	60	58	10	100
S1E10ZM10S072	72	72	70	10	100
S1E10ZM10S080	80	80	78	10	100
S1E10ZM10S084	84	84	82	10	120
S1E10ZM10S090	90	90	88	10	120
S1E10ZM10S096	96	96	94	10	120
S1E10ZM10S100	100	100	98	10	150
S1E10ZM10S108	108	108	106	10	150
S1E10ZM10S120	120	120	118	10	150