

TWO-PIECE JUNIOR COUPLINGS



PHONE: 516.328.3300 • FAX: 516.326.8827 • WWW.SDP-SI.COM

CROWNED GEAR TEETH
 CHEMICAL-RESISTANT NYLON
 NO NEED FOR LUBRICATION
 ELECTRICALLY ISOLATED

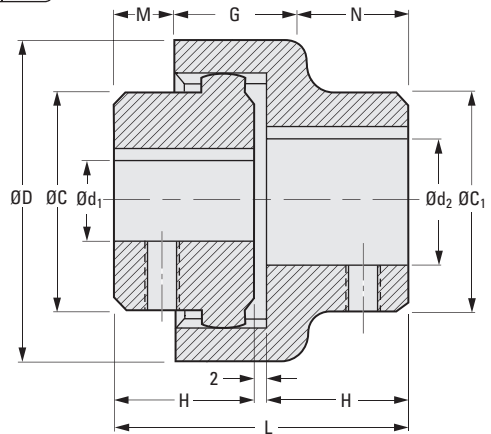


➤ **MATERIAL:**
 Nylon

➤ **OPERATING TEMPERATURE:**
 -25°C to +100°C

➤ **MAX. OPERATING SPEED:**
 6000 rpm

Keyway Dimensions								
Bore	6	8	10	12	14	16	18	20
w	2	2	3	4	5	5	6	6
t	1	1	1.4	1.8	2.3	2.3	2.8	2.8



METRIC COMPONENT

Catalog Number	d ₁ Bore	d ₂ Bore	C	C ₁	D	H	L	M	N	G	Torque N • m	
											Nom.	Max.
BoWex® Size JR-14												
S5911YMJR140610	6	10	22	25	40	23	48	8	17	23	5	10
S5911YMJR140810	8	10	22	25	40	23	48	8	17	23	5	10
S5911YMJR141010	10	10	25	25	40	23	48	8	17	23	5	10
S5911YMJR141212	12	12	26	26	40	23	48	8	17	23	5	10
S5911YMJR141214	12	14	26	26	40	23	48	8	17	23	5	10
S5911YMJR141414	14	14	26	26	40	23	48	8	17	23	5	10
BoWex® Size JR-19												
S5911YMJR191214	12	14	27	29	48	25	52	10	19	23	8	16
S5911YMJR191414	14	14	27	29	48	25	52	10	19	23	8	16
S5911YMJR191614	16	14	30	29	48	25	52	10	19	23	8	16
BoWex® Size JR-24												
S5911YMJR241014	10	14	26	32	52	26	54	9	20	25	12	24
S5911YMJR241214	12	14	26	32	52	26	54	9	20	25	12	24
S5911YMJR241414	14	14	32	32	52	26	54	9	20	25	12	24
S5911YMJR241614	16	14	32	32	52	26	54	9	20	25	12	24
S5911YMJR241820	18	20	36	36	52	26	54	9	20	25	12	24
S5911YMJR242020	20	20	36	36	52	26	54	9	20	25	12	24

NOTES: 1. Hub diameters (C, C₁) are not to exceed dimensions; some smaller bores may have smaller hub diameters.
 2. M5 set-screw, located 180° opposite from keyway.

THREE-PIECE JUNIOR COUPLINGS

SDP/SI

CROWNED GEAR TEETH
 CHEMICAL-RESISTANT NYLON
 NO NEED FOR LUBRICATION
 ELECTRICALLY ISOLATED

PHONE: 516.328.3300 • FAX: 516.326.8827 • WWW.SDP-SI.COM

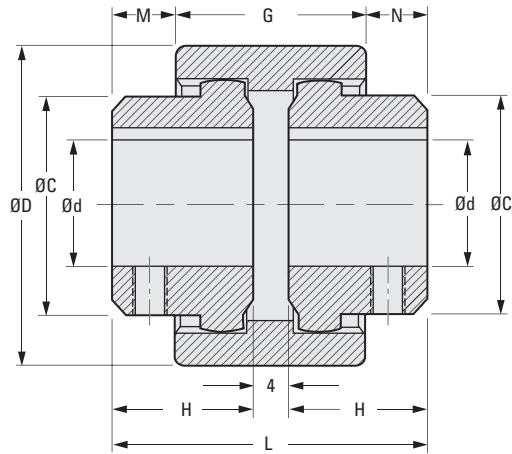


➤ **MATERIAL:**
 Nylon

➤ **OPERATING TEMPERATURE:**
 -25°C to +100°C

➤ **MAX. OPERATING SPEED:**
 6000 rpm

Keyway Dimensions								
Bore	6	8	10	12	14	16	18	20
w	2	2	3	4	5	5	6	6
t	1	1	1.4	1.8	2.3	2.3	2.8	2.8



METRIC COMPONENT

Catalog Number	d Bore	C	D	H	L	M/N	G	Torque N • m	
								Nom.	Max.
BoWex® Size JRM-14									
S5911YMJRM1406	6	22	40	23	50	6.5	37	5	10
S5911YMJRM1408	8	22	40	23	50	6.5	37	5	10
S5911YMJRM1410	10	25	40	23	50	6.5	37	5	10
S5911YMJRM1412	12	26	40	23	50	6.5	37	5	10
S5911YMJRM1414	14	26	40	23	50	6.5	37	5	10
BoWex® Size JRM-19									
S5911YMJRM1912	12	27	48	25	54	8.5	37	8	16
S5911YMJRM1914	14	27	48	25	54	8.5	37	8	16
S5911YMJRM1916	16	30	48	25	54	8.5	37	8	16
BoWex® Size JRM-24									
S5911YMJRM2410	10	26	52	26	56	7.5	41	12	24
S5911YMJRM2412	12	26	52	26	56	7.5	41	12	24
S5911YMJRM2414	14	32	52	26	56	7.5	41	12	24
S5911YMJRM2416	16	32	52	26	56	7.5	41	12	24
S5911YMJRM2418	18	36	52	26	56	7.5	41	12	24
S5911YMJRM2420	20	36	52	26	56	7.5	41	12	24

NOTES: 1. Hub diameters (C) are not to exceed dimensions; some smaller bores may have smaller hub diameters.
 2. M5 set-screw, located 180° opposite from keyway.

I

R

T

1

2

3

4

5

6

7

8

9

10

11

12

13

14

15

A