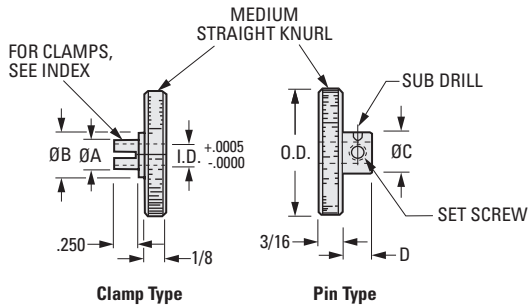
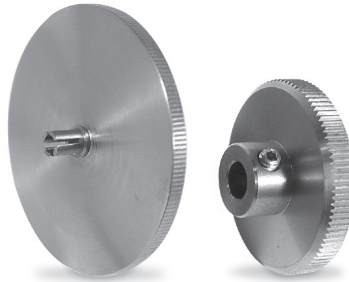


**MATERIAL:**  
303 Stainless Steel

PHONE: 516.328.3300 • FAX: 516.326.8827 • WWW.SDP-SI.COM

Special knobs are available on request.



**INCH COMPONENT**

Catalog Number		I.D.	O.D.	A Dia.	B Dia.	C Dia.	D	Sub Drill	Set Screw
Clamp Type	Pin Type								
S5901Y-KN-01	S5901Y-KN-10	.1248	1.000	.188	1/4	.312	3/16	.029	#2-56
S5901Y-KN-02	S5901Y-KN-11	.1248	1.500	.188	1/4	.312	3/16	.029	#2-56
S5901Y-KN-03	S5901Y-KN-12	.1248	2.000	.188	1/4	.312	3/16	.029	#2-56
S5901Y-KN-04	S5901Y-KN-13	.1873	1.000	.250	5/16	.375	7/32	.040	#4-40
S5901Y-KN-05	S5901Y-KN-14	.1873	1.500	.250	5/16	.375	7/32	.040	#4-40
S5901Y-KN-06	S5901Y-KN-15	.1873	2.000	.250	5/16	.375	7/32	.040	#4-40
S5901Y-KN-07	S5901Y-KN-16	.2498	1.000	.312	3/8	.500	1/4	.070	#6-32
S5901Y-KN-08	S5901Y-KN-17	.2498	1.500	.312	3/8	.500	1/4	.070	#6-32
S5901Y-KN-09	S5901Y-KN-18	.2498	2.000	.312	3/8	.500	1/4	.070	#6-32