

# LEVELING CARRY MOUNTINGS

**SDP/SI**

FOR LOADS OF 60 TO 100 kgf  
 CASTER TYPE  
 COMPACT & LIGHTWEIGHT DESIGN  
 EXCELLENT STABILITY  
 EASY MOVEMENT & SETTING  
 LOW PRICE

PHONE: 516.328.3300 • FAX: 516.326.8827 • WWW.SDP-SI.COM



**> DESCRIPTION:**

CARRY MOUNT is a moveable mount in which the rubber mount is incorporated into a caster. They allow movement of machines and give excellent vibration-free installations.

**> MATERIAL:**

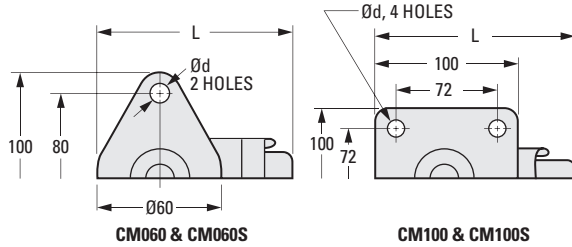
**Frame & Bolt** - Steel, Galvanized  
**Wheel** - Nylon  
**Isolator** - Oil-Resistant Rubber

**> APPLICATIONS:**

Shop Machines  
 Office Equipment  
 Medical Instruments

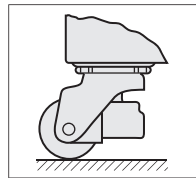
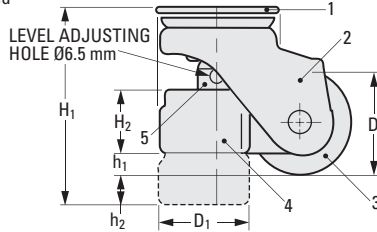
**> INSTALLATION:**

Raise machine and attach casters with suitable bolts. Insert screwdriver or 1/4" diameter rod into level adjusting hole and turn it to the left (clockwise) to lift the rubber mount. Machine can now be easily moved. Once relocated, level adjusting hole is rotated counterclockwise to lift the wheel. The machine is then positioned in place.

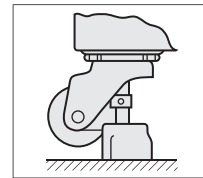


**MOUNTING HOLES**

1. MOUNTING PLATE
2. FRAME
3. WHEEL
4. RUBBER MOUNT
5. LEVELING BOLT & ADJUSTING NUT



**CASTER IN ROLLING POSITION**



**MACHINE LEVELED RUBBER MOUNT EXTENDED**

**METRIC COMPONENT**

Catalog Number	Working Load Max. kgf	H <sub>1</sub>	H <sub>2</sub>	D	D <sub>1</sub>	h <sub>1</sub>	h <sub>2</sub>	d Dia.	L
A10Z43MCM060	60	80	30	50	57	13	15	8.8	95
A10Z43MCM060S	60	70	8.9	50	34	10	16	8.8	96
A10Z43MCM100	100	120	46	75	76	25	17	11	143
A10Z43MCM100S	100	84	8.9	60	34	15	15	11	126

I  
R  
T  
1  
2  
3  
4  
5  
6  
7  
8  
9  
10  
11  
12  
13  
14  
15  
A

# LEVELING CARRY MOUNTINGS



FOR LOADS OF 200 TO 600 kgf  
 BALL TYPE  
 COMPACT & LIGHTWEIGHT DESIGN  
 EXCELLENT STABILITY  
 EASY MOVEMENT & SETTING  
 LOW PRICE

PHONE: 516.328.3300 • FAX: 516.326.8827 • WWW.SDP-SI.COM



**> DESCRIPTION:**

CARRY MOUNT is a moveable mount in which the rubber mount is incorporated with a rotating ball. They allow movement of machines and give excellent vibration-free installations.

**> MATERIAL:**

- Spoked Wheel** - Steel, Painted
- Bolt** - Steel, Zinc Plated
- Housing** - Iron, Galvanized
- Ball** - Steel
- Isolator** - Oil-Resistant Rubber

**> APPLICATIONS:**

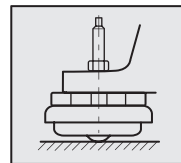
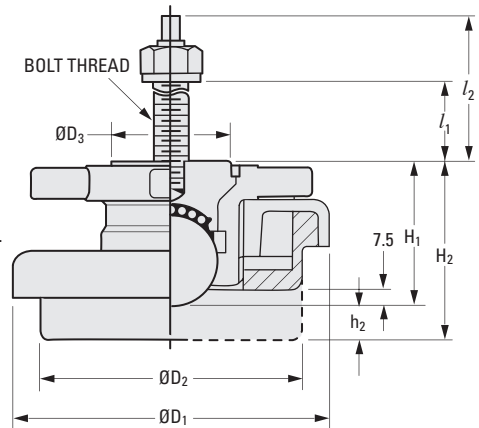
- Shop Machines
- Office Equipment
- Medical Instruments

**> INSTALLATION:**

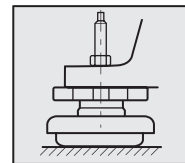
Place the CARRY MOUNT under the bolt hole of the machine. Insert the bolt into the screw hole of the CARRY MOUNT and screw it in until the bolt stops.

Turn the spoked wheel clockwise to lift the rubber mount. The steel ball then allows free movement.

Turn the spoked wheel counterclockwise to lift the steel ball. The rubber mount now supports the machine in place.



MOUNT IN ROLLING POSITION



MACHINE LEVELED RUBBER PAD EXTENDED

**METRIC COMPONENT**

Catalog Number	Working Load Max. kgf	H <sub>1</sub>	H <sub>2</sub>	D <sub>1</sub> Dia. ± 2	D <sub>2</sub> Dia.	D <sub>3</sub> Dia.	l <sub>1</sub>	l <sub>2</sub>	h <sub>2</sub>	Bolt Thread
A10Z44MCM200	200	58	70	100	80	44	67	92	12	M12
A10Z44MCM600	600	65	79	140	120	54	72	102	14	M14