

## SPLIT TYPE HUB

PHONE: 516.328.3300 • FAX: 516.326.8827 • WWW.SDP-SI.COM



### > MATERIAL:

**Hubs** - Aluminum, Clear Anodized  
**Torque Disc** - Acetal

### > OPERATING TEMPERATURE:

-40°C to +85°C

### > FEATURES:

Easy Assembly.  
 Lubrication-Free.  
 Low Inertia.  
 Corrosion-Resistant.  
 Electrical Isolation.

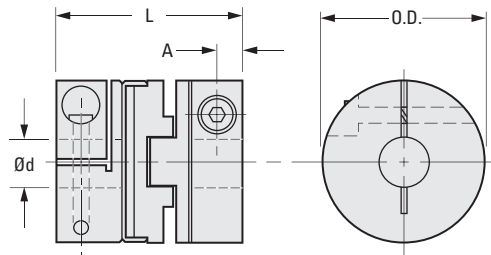
### > MAX. SERVICE TORQUE:

0.75 Nm for 15 series  
 1.69 Nm for 19 series  
 3.95 Nm for 25 series  
 9.04 Nm for 33 series

### > BUILD YOUR OWN COUPLING:

**For Different Bore Combinations:** Select hubs and corresponding disc within the same series.

**For Hubs with the Same Bore:** Select the "Complete Coupling"



The projections shown are per ISO convention.

Set Screw & Split Hubs can be interchanged if discs from the same size O.D. are selected.

## METRIC COMPONENT

Catalog Number			O.D.	d Bore +0.030 0	L Length	Max. Shaft Depth	Cap Screw	Max. Angular Offset	Max. Lateral Offset	A
Complete Coupling	Hub Only	Disc Only								
A 5Z15M331503	A 5A15M331503	A 5P15M3315	15	3	25.9	8.1	M2	1/2°	0.1	2.4
A 5Z15M331504	A 5A15M331504		15	4	25.9	8.1	M2	1/2°	0.1	2.4
A 5Z15M331506	A 5A15M331506		15	6	25.9	8.1	M3	1/2°	0.1	2.4
A 5Z15M331903	A 5A15M331903	A 5P15M3319	19.1	3	22	6.3	M2.5	1/2°	0.2	2.4
A 5Z15M331904	A 5A15M331904		19.1	4	22	6.3	M2.5	1/2°	0.2	2.4
A 5Z15M331906	A 5A15M331906		19.1	6	22	6.3	M3	1/2°	0.2	2.4
A 5Z15M332506	A 5A15M332506	A 5P15M3325	25.4	6	28.4	8.6	M3	1/2°	0.2	3.2
A 5Z15M332508	A 5A15M332508		25.4	8	28.4	8.6	M3	1/2°	0.2	3.2
A 5Z15M332510	A 5A15M332510		25.4	10	28.4	8.6	M3	1/2°	0.2	3.2
A 5Z15M333308	A 5A15M333308	A 5P15M3333	33.3	8	48	13	M3	1/2°	0.2	3.2
A 5Z15M333310	A 5A15M333310		33.3	10	48	13	M3	1/2°	0.2	3.2
A 5Z15M333312	A 5A15M333312		33.3	12	48	13	M3	1/2°	0.2	3.2

**SET SCREW HUB**

PHONE: 516.328.3300 • FAX: 516.326.8827 • WWW.SDP-SI.COM

**> MATERIAL:**

**Hubs** - 06, 09 & 13 Series - Brass, Bright Dip  
 15 Thru 41 Series - Aluminum, Clear Anodized  
**Torque Disc** - Acetal

**> OPERATING TEMPERATURE:**

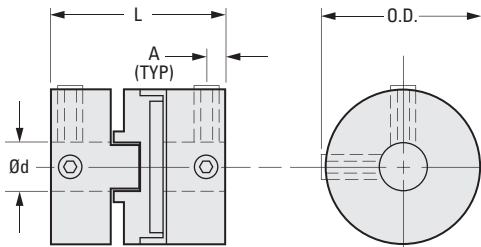
-40°C to +85°C

**> FEATURES:**

Easy Assembly.  
 Lubrication-Free.  
 Low Inertia.  
 Corrosion-Resistant.  
 Electrical Isolation.

**> MAX. SERVICE TORQUE:**

0.06 Nm for 06 series  
 0.2 Nm for 09 series  
 0.49 Nm for 13 series  
 0.75 Nm for 15 series  
 1.69 Nm for 19 series  
 3.95 Nm for 25 series  
 9.04 Nm for 33 series  
 16.94 Nm for 41 series



**> BUILD YOUR OWN COUPLING:**

**For Different Bore Combinations:** Select hubs and corresponding disc within the same series.

**For Hubs with the Same Bore:** Select the "Complete Coupling"

Set Screw & Split Hubs can be interchanged if discs from the same size O.D. are selected.

**METRIC COMPONENT**

Catalog Number			O.D.	d Bore +0.030 0	L Length	Max. Shaft Depth	Set Screw	Max. Angular Offset	Max. Lateral Offset	A
Complete Coupling	Hub Only	Disc Only								
A 5Z15M000602	A 5B15M000602	A 5P15M0006	6.4	2	12.7	3.8	M3*	1/2°	0.1	1.9
A 5Z15M000603	A 5B15M000603		6.4	3	12.7	3.8	M3*	1/2°	0.1	1.9
A 5Z15M000903	A 5B15M000903	A 5P15M0009	9.5	3	12.7	3.8	M3*	1/2°	0.1	1.9
A 5Z15M000904	A 5B15M000904		9.5	4	12.7	3.8	M3*	1/2°	0.1	1.9
A 5Z15M001304	A 5B15M001304	A 5P15M0013	12.7	4	15.9	4.3	M3	1/2°	0.1	2.4
A 5Z15M001306	A 5B15M001306		12.7	6	15.9	4.3	M3	1/2°	0.1	2.4
A 5Z15M001504	A 5A15M001504	A 5P15M0015	15	4	25.9	8.1	M3	1/2°	0.1	2.4
A 5Z15M001506	A 5A15M001506		15	6	25.9	8.1	M3	1/2°	0.1	2.4
A 5Z15M001906	A 5A15M001906	A 5P15M0019	19.1	6	22	6.3	M3	1/2°	0.2	2.4
A 5Z15M001908	A 5A15M001908		19.1	8	22	6.3	M3	1/2°	0.2	2.4
A 5Z15M002508	A 5A15M002508	A 5P15M0025	25.4	8	28.4	8.6	M4	1/2°	0.2	3.2
A 5Z15M002510	A 5A15M002510		25.4	10	28.4	8.6	M4	1/2°	0.2	3.2
A 5Z15M003310	A 5A15M003310	A 5P15M0033	33.3	10	48	13	M4	1/2°	0.2	3.2
A 5Z15M003312	A 5A15M003312		33.3	12	48	13	M4	1/2°	0.2	3.2
A 5Z15M004110	A 5A15M004110	A 5P15M0041	41.1	10	50.8	16.7	M5	1/2°	0.25	4.4
A 5Z15M004112	A 5A15M004112		41.1	12	50.8	16.7	M5	1/2°	0.25	4.4

\*06 & 09 series have only one set screw at each end.

