

42 mm DIAMETER  
LIGHT-DUTY

PHONE: 516.328.3300 • FAX: 516.326.8827 • WWW.SDP-SI.COM

**➤ MATERIAL:**

- Housing - Steel, Zinc Chromate Finish
- Shaft & Gears - Steel
- Bearings - Bronze
- Mating Motor Pinion - Brass

**➤ OPERATING TEMPERATURE:**

-10°C to +60°C

**➤ SPECIFICATIONS:**

- Radial Play of Shaft: ≤ 0.1 mm
- Thrust Play of Shaft: ≤ 0.35 mm
- Backlash: 2° at output shaft

**➤ WEIGHT:**

65 g

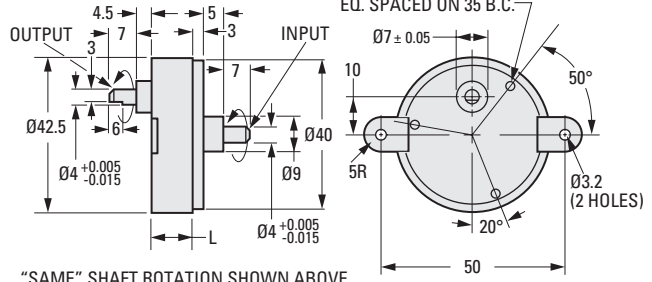
- Δ Gearhead
- Less Flange & Pinion
- Mounting Screws supplied

**SPEED REDUCER**



**GEARHEAD Δ**

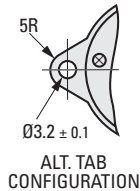
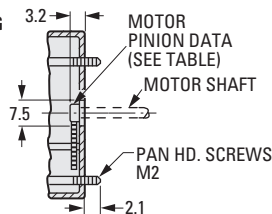
Ø2.1 THRU (3) HOLES  
EQ. SPACED ON 35 B.C.



"SAME" SHAFT ROTATION SHOWN ABOVE

**HOUSING MOUNTING DIMENSIONS**

The projections shown are per ISO convention.



**METRIC COMPONENT**

Catalog Number *		Gear Ratio to 1	L	Shaft Rotation	Efficiency %	Maximum Torque N • m (lb. in.)	
Speed Reducers	Gearheads Only					Continuous	Momentary
A 2Z15M00020	A 2G15M00020	20	11.3	Same	81	0.01 (.09)	0.05 (.44)
A 2Z15M00030	A 2G15M00030	30	11.3	Same	81	0.02 (.18)	0.1 (.90)
A 2Z15M00050	-	50	11.3	Reverse	73	0.04 (.35)	0.2 (.18)
A 2Z15M00060	A 2G15M00060	60	11.3	Reverse	73	0.04 (.35)	0.2 (.18)
A 2Z15M00100	A 2G15M00100	100	11.3	Reverse	73	0.06 (.53)	0.3 (2.7)
A 2Z15M00150	A 2G15M00150	150	11.3	Reverse	73	0.06 (.53)	0.3 (2.7)
A 2Z15M00200	A 2G15M00200	200	11.3	Same	66	0.08 (.71)	0.4 (3.5)
A 2Z15M00250	A 2G15M00250	250	11.3	Same	66	0.08 (.71)	0.4 (3.5)
A 2Z15M00300	-	300	11.3	Same	66	0.08 (.71)	0.4 (3.5)
A 2Z15M00400	A 2G15M00400	400	11.3	Same	66	0.08 (.71)	0.4 (3.5)
A 2Z15M00500	A 2G15M00500	500	11.3	Same	66	0.1 (.89)	0.5 (4.4)
A 2Z15M00750	A 2G15M00750	750	11.3	Same	66	0.1 (.89)	0.5 (4.4)
A 2Z15M01000	A 2G15M01000	1000	11.3	Reverse	59	0.1 (.89)	0.5 (4.4)
A 2Z15M01500	A 2G15M01500	1500	11.3	Reverse	59	0.1 (.89)	0.5 (4.4)
A 2Z15M02000	A 2G15M02000	2000	11.3	Reverse	59	0.1 (.89)	0.5 (4.4)
A 2Z15M03000	A 2G15M03000	3000	11.3	Reverse	59	0.1 (.89)	0.5 (4.4)
A 2Z15M15000	A 2G15M15000	15000	14.4	Same	-	0.1 (.89)	0.5 (4.4)
-	A 2G15M30000	30000	14.4	Reverse	-	0.1 (.89)	0.5 (4.4)
-	A 2G15M90000	90000	14.4	Reverse	-	0.1 (.89)	0.5 (4.4)

\* To be discontinued when present stock is depleted.

Catalog Number	Number of Teeth	Module	P.D.	O.D.	Bore -0.02 -0.04	Face Width
<b>Mating Motor Pinion for Gearheads</b>						
A 1B 8MYS03010	10	0.3	3.15	3.75	2	2

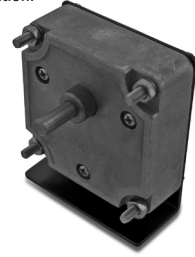
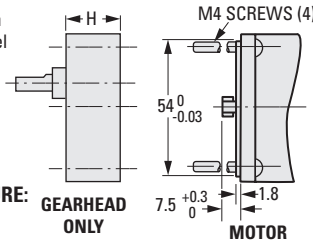
60 mm SQUARE HOUSING

PHONE: 516.328.3300 • FAX: 516.326.8827 • WWW.SDP-SI.COM

**> MATERIAL:**

- Housing** - Die Cast Aluminum
- Bracket** - Steel, Black Enamel
- Shaft** - Steel
- Gears** - Steel & Phenolic
- Bearings** - Input - Ball
- Output** - Bronze
- Mating Motor Pinion** - Brass

The projections shown are per ISO convention.



**> OPERATING TEMPERATURE:**

-10°C to +60°C

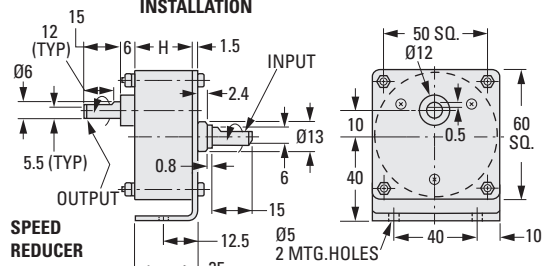
**> SPECIFICATIONS:**

- Radial Play of Shaft: ≤ 0.1 mm
- Thrust Play of Shaft: ≤ 0.3 mm

**> APPROX. WEIGHT:**

0.026 kg (Speed Reducer)

These gearheads can be used as replacements for A 3G25M... & D33S54M... Series gearmotors



Catalog Number *		Gear Ratio to 1	Shaft Rotation	H	Efficiency %	Maximum Torque N • m (lb. in.)	
Speed Reducers	Gearheads Only					Continuous	Momentary
A 2Z25M0006	-	6	Same	19	81	0.1 (0.9)	0.3 (2.7)
A 2Z25M0008	A 2G25M0008	7.5	Same	19	81	0.1 (0.9)	0.3 (2.7)
A 2Z25M00010	A 2G25M00010	10	Same	19	81	0.2 (1.8)	0.6 (5.3)
A 2Z25M0012H	A 2G25M0012H	12.5	Reverse	19	81	0.2 (1.8)	0.6 (5.3)
A 2Z25M0020	A 2G25M0020	20	Same	19	81	0.3 (2.7)	0.9 (8.0)
A 2Z25M0025	A 2G25M0025	25	Reverse	21.5	73	0.4 (3.5)	1.18 (10.4)
A 2Z25M0030	A 2G25M0030	30	Reverse	21.5	73	0.4 (3.5)	1.18 (10.4)
A 2Z25M0036	A 2G25M0036	36	Reverse	21.5	73	0.4 (3.5)	1.18 (10.4)
A 2Z25M0040	A 2G25M0040	40	Reverse	21.5	73	0.4 (3.5)	1.18 (10.4)
A 2Z25M0050	A 2G25M0050	50	Reverse	21.5	73	0.7 (6.2)	2.07 (18.3)
A 2Z25M0060	A 2G25M0060	60	Reverse	21.5	73	0.7 (6.2)	2.07 (18.3)
A 2Z25M0100	A 2G25M0100	100	Reverse	21.5	73	1 (8.9)	2.96 (26.2)
A 2Z25M0120	A 2G25M0120	120	Same	24	66	1 (8.9)	2.96 (26.2)
A 2Z25M0150	A 2G25M0150	150	Same	24	66	1 (8.9)	2.96 (26.2)
A 2Z25M0180	A 2G25M0180	180	Same	24	66	1 (8.9)	2.96 (26.2)
A 2Z25M0200	A 2G25M0200	200	Same	24	66	1 (8.9)	2.96 (26.2)
A 2Z25M0250	A 2G25M0250	250	Same	24	66	1 (8.9)	2.96 (26.2)
A 2Z25M0300	A 2G25M0300	300	Same	24	66	1 (8.9)	2.96 (26.2)
A 2Z25M0360	A 2G25M0360	360	Same	24	66	1 (8.9)	2.96 (26.2)
A 2Z25M0450	A 2G25M0450	450	Reverse	26.5	59	1 (8.9)	2.96 (26.2)
A 2Z25M0500	A 2G25M0500	500	Same	24	66	1 (8.9)	2.96 (26.2)
A 2Z25M0750	A 2G25M0750	750	Reverse	26.5	59	1 (8.9)	2.96 (26.2)
A 2Z25M0900	A 2G25M0900	900	Reverse	26.5	59	1 (8.9)	2.96 (26.2)
A 2Z25M1000	A 2G25M1000	1000	Reverse	26.5	59	1 (8.9)	2.96 (26.2)
A 2Z25M1200	A 2G25M1200	1200	Reverse	26.5	59	1 (8.9)	2.96 (26.2)
A 2Z25M1500	A 2G25M1500	1500	Reverse	26.5	59	1 (8.9)	2.96 (26.2)
A 2Z25M1800	A 2G25M1800	1800	Reverse	26.5	59	1 (8.9)	2.96 (26.2)
A 2Z25M2000	A 2G25M2000	2000	Reverse	26.5	59	1 (8.9)	2.96 (26.2)

\* To be discontinued when present stock is depleted.

Catalog Number	Number of Teeth	Module	P.D.	O.D.	Bore -0.02 -0.04	Face Width
<b>Mating Motor Pinion for Gearheads</b>						
A 1B 8MYS05012	12	0.5	6.2	7.2	4	4