

DIN 7  
PIN FIT m6

PHONE: 516.328.3300 • FAX: 516.326.8827 • WWW.SDP-SI.COM

**> MATERIAL:**

304 Stainless Steel

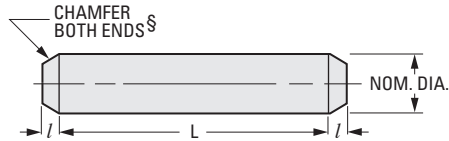
**> SPECIFICATIONS:**

Nominal Diameter Tolerance (m6):

2 to 3 mm +0.008/+0.002

4 to 6 mm +0.012/+0.004

Priced Per 100 Pieces



<sup>§</sup> Chamfer or rounded ends at SDP option

Nominal Diameter	2	2.5	3	4	5	6
<i>l</i>	0.3	0.4	0.45	0.6	0.75	0.9

**METRIC COMPONENT  
CATALOG NUMBER**

**M D 0 0 0 7 M X 0 0   X 0**

Nominal Diameter m6						L Length Code mm	Length Tolerance
2	2.5	3	4	5	6		
Diameter Code							
20	25	30	40	—	—	06	± 0.25
20	25	30	40	50	—	08	± 0.25
20	25	30	40	50	60	10	± 0.25
20	25	30	40	50	60	12	± 0.50
20	25	30	40	50	60	14	± 0.50
—	25	30	40	50	60	16	± 0.50
20	25	30	40	50	60	20	± 0.50
—	25	30	40	50	60	24	± 0.50
—	—	—	40	50	60	40	± 0.50
—	—	—	—	50	60	50	± 0.50
—	—	—	—	—	60	60	± 0.75

# PRECISION DOWEL PINS



DIN 6325/ISO 8734

PHONE: 516.328.3300 • FAX: 516.326.8827 • WWW.SDP-SI.COM

**> MATERIAL:**

Hardened Steel, HRC 58-62

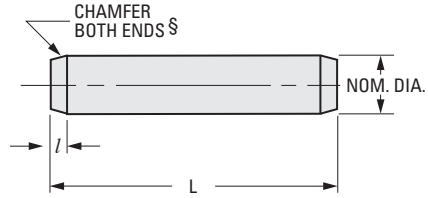
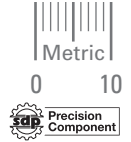
**> SPECIFICATIONS:**

Nominal Diameter Tolerance:

1 to 3 mm +0.008/+0.002

4 to 6 mm +0.012/+0.004

Priced Per 100 Pieces



§ Chamfer or rounded ends at SDP option.

Nominal Diameter	1	1.5	2	2.5	3	4	5	6
<i>l</i>	0.48	0.62	0.78	0.95	1.1	1.4	1.7	2.1

## METRIC COMPONENT CATALOG NUMBER

MD 6325 M Q 00   X 0

Nominal Diameter m6								L Length Code mm	Length Tolerance
1	1.5	2	2.5	3	4	5	6		
Diameter Code									
10	-	-	-	-	-	-	-	04	± 0.25
10	15	20	25	30	-	-	-	05	± 0.25
10	15	20	25	30	40	50	-	06	± 0.25
10	15	20	25	30	40	50	60	08	± 0.25
10	15	20	25	30	40	50	60	10	± 0.25
10	15	20	25	30	40	50	60	12	± 0.50
-	15	20	25	30	40	50	60	14	± 0.50
-	15	20	25	30	40	50	60	16	± 0.50
-	15	20	25	30	40	50	60	20	± 0.50
-	15	20	25	30	40	50	60	24	± 0.50
-	-	20	-	30	-	-	-	25*	± 0.50
-	15	20	25	30	40	50	60	28	± 0.50
-	15	20	25	30	40	50	60	30	± 0.50
-	15	20	25	30	40	50	60	32	± 0.50
-	-	-	-	30	-	-	-	35*	± 0.50
-	-	20	25	30	40	50	60	36	± 0.50
-	-	20	25	30	40	50	60	40	± 0.50
-	-	-	25	-	40	50	60	45	± 0.50
-	-	-	25	30	40	50	60	50	± 0.50
-	-	-	-	-	-	50	60	55	± 0.75
-	-	-	-	30	-	50	60	60	± 0.75
-	-	-	-	-	-	-	60	70	± 0.75
-	-	-	-	-	-	-	60	80	± 0.75

\* To be discontinued when present stock is depleted.

DIN 1481/ISO 8752

PHONE: 516.328.3300 • FAX: 516.326.8827 • WWW.SDP-SI.COM

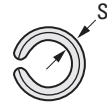
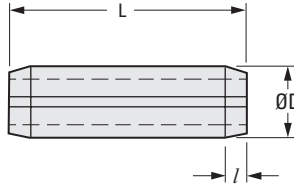
**> MATERIAL:**

Hardened Steel, Black Oxide Finish or  
Stainless Steel



**> SPECIFICATION:**

Priced Per 100 Pieces



Nominal Diameter	1	1.5	2	2.5	3	4
<i>l</i>	0.15	0.25	0.35	0.4	0.5	0.65
<i>S</i> Wall Thick.	0.2	0.3	0.4	0.5	0.6	0.8
<i>D</i> Free Dia.	1.2	1.7	2.3	2.8	3.3	4.4

**METRIC COMPONENT  
CATALOG NUMBER**

**MD1481M**   **0**   **X0**

**Material Code**  
Hardened Steel, Black Oxide Finish **QB**

Stainless Steel **XO**

Nominal Diameter						L Length Code mm
1 *	1.5 *	2	2.5	3	4	
Diameter Code						
10	15	-	-	-	-	04
10	15	20	-	-	-	05
10	15	20	25	-	-	06
10	15	20	25	30	-	08
10	15	20	25	30	40	10
-	15	20	25	30	40	12
-	15	20	25	30	40	14
-	-	20	25	30	40	16
-	-	20	25	30	40	18
-	-	-	25	30	40	20
-	-	-	25	30	40	22
-	-	-	-	30	40	24
-	-	-	-	30	40	26
-	-	-	-	-	40	28
-	-	-	-	-	40	30

\*Stainless Steel is not available in 1 & 1.5 mm diameters.

- I
- R
- T
- 1
- 2
- 3
- 4
- 5
- 6
- 7
- 8
- 9
- 10**
- 11
- 12
- 13
- 14
- 15
- A

# TAPER PINS

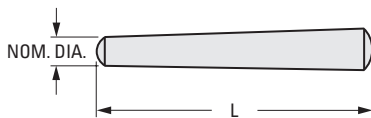


DIN 1/ISO 2339

PHONE: 516.328.3300 • FAX: 516.326.8827 • WWW.SDP-SI.COM

**> SPECIFICATION:**

Priced Per 100 Pieces



**> MATERIAL:**

Steel

**METRIC COMPONENT CATALOG NUMBER**

MD0001MC00   X

Nominal Diameter						L Length Code mm
1	1.5	2	2.5	3	4	
Diameter Code						
10	-	20	-	-	-	008
10	15	20	25	30	-	010
10	15	20	25	30	-	012
10	15	20	25	30	40	014
10	15	20	25	30	40	016
10	15	20	25	30	40	018
-	15	20	25	30	40	020
-	15	20	25	30	40	022
-	15	20	25	30	40	024
-	15	20	25	30	40	026
-	-	20	25	30	40	028
-	-	20	25	30	40	030
-	-	-	25	30	40	032
-	-	-	25	30	40	036
-	-	-	25	30	40	040
-	-	-	-	30	40	045
-	-	-	-	30	40	050
-	-	-	-	-	40	060

**> MATERIAL:**

303 Stainless Steel

**METRIC COMPONENT CATALOG NUMBER**

MD0001MX00   X

Nominal Diameter						L Length Code mm
1	1.5	2	2.5	3	4	
Diameter Code						
10	-	-	-	-	-	008
10	15	20	-	-	-	010
10	15	20	-	30	-	012
10	15	20	-	30	-	014
10	15	20	25	30	40	016
10	15	20	25	30	-	018
-	15	20	25	30	40	020
-	-	20	25	30	40	024
-	-	20	25	30	40	026
-	-	20	25	30	40	030
-	-	-	25	30	40	036
-	-	20	25	30	40	040
-	-	-	-	30	40	045
-	-	20	-	30	40	050
-	-	-	-	-	40	060