

SIMPLE INSTALLATION  
ECONOMICAL COST  
ENERGY EFFICIENT

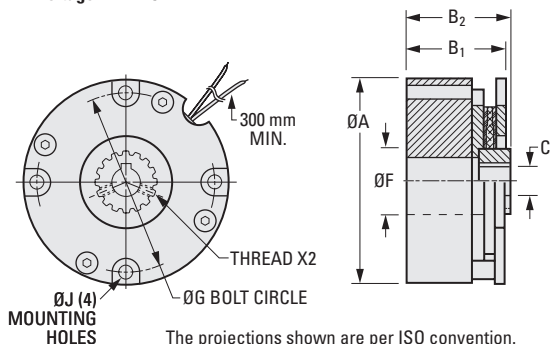
PHONE: 516.328.3300 • FAX: 516.326.8827 • WWW.SDP-SI.COM



0 10

**> COIL DATA:**

Voltage: 24V DC



The projections shown are per ISO convention.



Keyway Dimensions					
Bore	6	8	10	12	16
Width	2	3	3	4	5
Height	7	9.4	11.4	13.8	18.3

**METRIC COMPONENT**

Catalog Number	Static Torque N•m	Max. Watts	C Bore	F Case Inside Dia.	A Dia.	G	J	B <sub>1</sub> OAL Short Hub	B <sub>2</sub> OAL Long Hub
S90SB9M15A06S	0.56	7	6	13.5	38.1	33.3	3.2	26.9	—
S90SB9M15A06L	0.56	7	6	13.5	38.1	33.3	3.2	—	30
S90SB9M15A08S	0.56	7	8	13.5	38.1	33.3	3.2	26.9	—
S90SB9M15A08L	0.56	7	8	13.5	38.1	33.3	3.2	—	30
S90SB9M15A10S	0.56	7	10	13.5	38.1	33.3	3.2	26.9	—
S90SB9M15A10L	0.56	7	10	13.5	38.1	33.3	3.2	—	30
S90SB9M17A06S	1.13	10	6	14.7	45.5	41.7	2.4	30.2	—
S90SB9M17A06L	1.13	10	6	14.7	45.5	41.7	2.4	—	33.5
S90SB9M17A10S	1.13	10	10	14.7	45.5	41.7	2.4	30.2	—
S90SB9M17A10L	1.13	10	10	14.7	45.5	41.7	2.4	—	33.5
S90SB9M17A12S	1.13	10	12	14.7	45.5	41.7	2.4	30.2	—
S90SB9M17A12L	1.13	10	12	14.7	45.5	41.7	2.4	—	33.5
S90SB9M19A06S	2.03	12	6	10.9	50.8	45	3.7	30.2	—
S90SB9M19A06L	2.03	12	6	10.9	50.8	45	3.7	—	35
S90SB9M19A10S	2.03	12	10	10.9	50.8	45	3.7	30.2	—
S90SB9M19A10L	2.03	12	10	10.9	50.8	45	3.7	—	35
S90SB9M23A08S	3.95	13	8	20	60	52.1	4.5	35.6	—
S90SB9M23A08L	3.95	13	8	20	60	52.1	4.5	—	41.9
S90SB9M23A10S	3.95	13	10	20	60	52.1	4.5	35.6	—
S90SB9M23A10L	3.95	13	10	20	60	52.1	4.5	—	41.9
S90SB9M23A12S	3.95	13	12	20	60	52.1	4.5	35.6	—
S90SB9M23A12L	3.95	13	12	20	60	52.1	4.5	—	41.9
S90SB9M23A16S	3.95	13	16	20	60	52.1	4.5	35.6	—
S90SB9M23A16L	3.95	13	16	20	60	52.1	4.5	—	41.9

Catalog Number (Series Ref.)	Thread	Nom. Resistance Ohms	Armature		Rotor Inertia kgf • m • sec <sup>2</sup>	Energy Dissipation N • m/min	Weight kg
			Engagement msec	Disengagement msec			
S90SB9M15A...	M2	96	20	10	0.5 x 10 <sup>-7</sup>	678	0.1
S90SB9M17A...	M3	64	20	10	0.21 x 10 <sup>-6</sup>	949	0.3
S90SB9M19A...	M3	54	35	10	0.27 x 10 <sup>-6</sup>	1220	0.3
S90SB9M23A...	M3	46.5	70	20	0.20 x 10 <sup>-6</sup>	1627	0.5

Continued on the next page

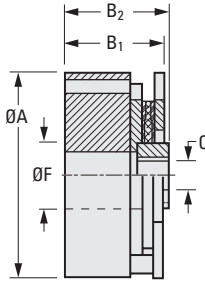
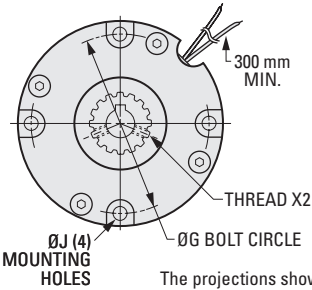
SIMPLE INSTALLATION  
ECONOMICAL COST  
ENERGY EFFICIENT

PHONE: 516.328.3300 • FAX: 516.326.8827 • WWW.SDP-SI.COM



**> COIL DATA:**

Voltage: 24V DC



The projections shown are per ISO convention.



Keyway Dimensions			
Bore	10	12	16
Width	3	4	5
Height	11.4	13.8	18.3

**METRIC COMPONENT**

Catalog Number	Static Torque N•m	Max. Watts	C Bore	F Case Inside Dia.	A Dia.	G	J	B <sub>1</sub> OAL Short Hub	B <sub>2</sub> OAL Long Hub
S90SB9M26A10S	4.52	19	10	16	72.9	63.5	4.5	31	—
S90SB9M26A10L	4.52	19	10	16	72.9	63.5	4.5	—	36.8
S90SB9M26A12S	4.52	19	12	16	72.9	63.5	4.5	31	—
S90SB9M26A12L	4.52	19	12	16	72.9	63.5	4.5	—	36.8
S90SB9M28A10S	9.04	20	10	30	77	70	4.5	31	—
S90SB9M28A10L	9.04	20	10	30	77	70	4.5	—	36.8
S90SB9M28A12S	9.04	20	12	30	77	70	4.5	31	—
S90SB9M28A12L	9.04	20	12	30	77	70	4.5	—	36.8
S90SB9M28A16S	9.04	20	16	30	77	70	4.5	31	—
S90SB9M28A16L	9.04	20	16	30	77	70	4.5	—	36.8

Catalog Number (Series Ref.)	Thread	Nom. Resistance Ohms	Armature		Rotor Inertia kgf • m • sec <sup>2</sup>	Energy Dissipation N • m/min	Weight kg
			Engagement msec	Disengagement msec			
S90SB9M26A...	M4	33	80	20	0.13 x 10 <sup>-5</sup>	1898	0.5
S90SB9M28A...	M4	36	50	40	0.12 x 10 <sup>-6</sup>	2440	0.8

Continued from the previous page

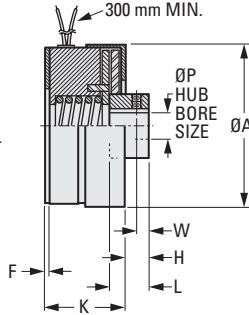
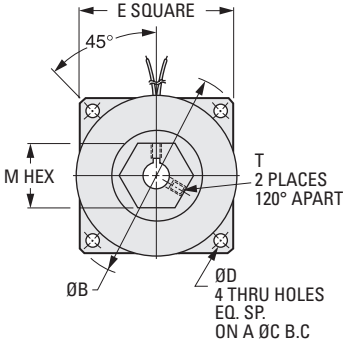
BRAKES LOAD IN ABSENCE OF POWER

PHONE: 516.328.3300 • FAX: 516.326.8827 • WWW.SDP-SI.COM

**> COIL DATA:**

**Voltage:** 24V DC

Other voltages available on special order.



The projections shown are per ISO convention.

**Keyway Dimensions**

<b>Bore</b>	<b>6</b>	<b>12</b>
<b>Width</b>	2	4
<b>Height</b>	7	13.8

**METRIC COMPONENT**

Catalog Number *	Min. Static Torque N • m	Max. Wattage	P Hub Bore	A	B	C	D	E
S90BRCM11A05	0.565	7	5 $\Delta$	32.1	38.05	33.3	3.2	29
S90BRCM11A06	0.565	7	6	32.1	38.05	33.3	3.2	29
S90BRCM26A12	5.65	14	12	67.1	88.87	79.4	5.1	66.8

Catalog Number * (Ref.)	F	H	K	L	M	T Set Screws	W	Weight kg
S90BRCM11A05	1.6	8.5	27.7	12.2	12.7	M3	4.3	0.1
S90BRCM11A06	1.6	8.5	27.7	12.2	12.7	M3	4.3	0.1
S90BRCM26A12	1.6	13.2	34.8	19.6	22.2	M5	7.9	0.7

\* To be discontinued when present stock is depleted.

$\Delta$  No keyway supplied with 5 mm bore.

- I
- R
- T
- 1
- 2
- 3
- 4
- 5
- 6
- 7
- 8
- 9
- 10
- 11
- 12
- 13
- 14
- 15
- A

# POWER-OFF PARALLEL PLATE BRAKES

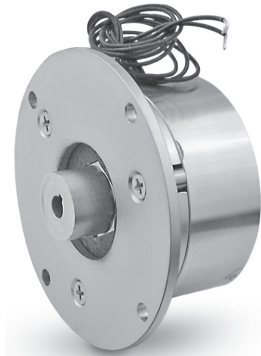
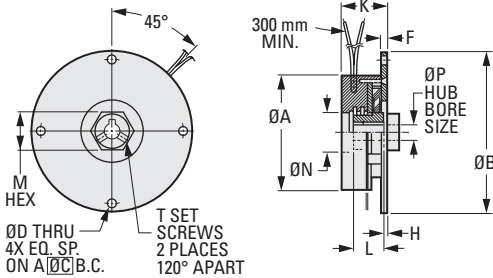


STOPS CRITICAL LOADS UPON POWER FAILURE PHONE: 516.328.3300 • FAX: 516.326.8827 • WWW.SDP-SI.COM

## > COIL DATA:

Voltage: 24V DC

Other voltages available on special order.



The projections shown are per ISO convention.

### Keyway Dimensions

Bores	6	8
Width	2	3
Height	7	9.4

### METRIC COMPONENT

Catalog Number *	Min. Static Torque N • m	Max. Wattage	P Hub Bore	A	B	C	D
S90BRPM22A06	0.904	8	6	57.2	81.28	72.1	4.5
S90BRPM22A08	0.904	8	8	57.2	81.28	72.1	4.5
S90BRPM23A06	1.694	8	6	60.4	82.55	72.1	4.7
S90BRPM23A08	1.694	8	8	60.4	82.55	72.1	4.7

Catalog Number * (Ref.)	F	H	K	L	M	T Set Screws	N	Weight kg
S90BRPM22A06	2.5	0.5	22.9	15.8	19.1	M3	19.8	0.3
S90BRPM22A08	2.5	0.5	22.9	15.8	19.1	M3	19.8	0.3
S90BRPM23A06	3.1	2.9	36.9	19.1	19.1	M3	19.8	0.4
S90BRPM23A08	3.1	2.9	36.9	19.1	19.1	M3	19.8	0.4

\* To be discontinued when present stock is depleted.