

# RECTANGULAR MOUNTINGS • TO 1475 lbf



FOR COMPRESSION LOADS OF 1475 lbf  
SHEAR LOADS OF 440 lbf

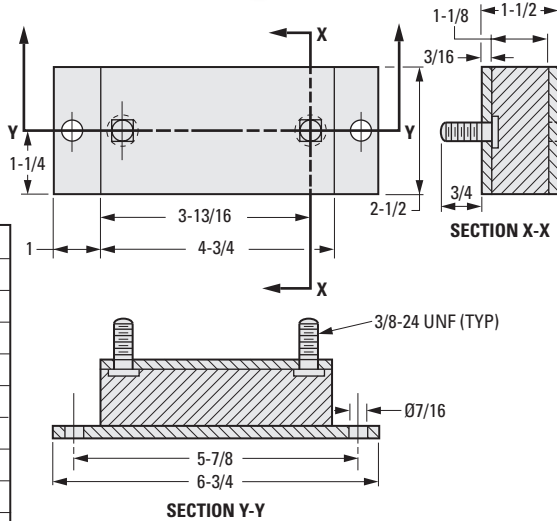
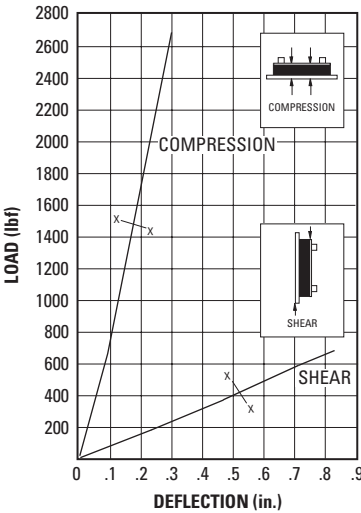
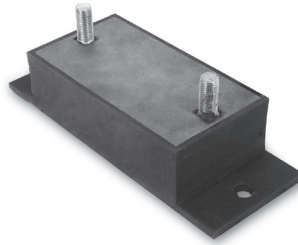
PHONE: 516.328.3300 • FAX: 516.326.8827 • WWW.SDP-SI.COM

► **MATERIAL:**

**Isolator** - Natural Rubber  
**Base** - Steel

► **LOAD DEFLECTION GRAPHS:**

Deflections below the line x-x are considered safe practice for static loads; data above that line are useful for calculating deflections under dynamic loads.



**INCH COMPONENT CATALOG NUMBER**

**A 10 Z 6 - 520 B**

81% vibration absorption (usually satisfactory) will be obtained when the mounting indicated is operating at the minimum load shown for each forced frequency. Better than 81% absorption will be obtained either with a greater load (within the limits shown) for a given forced frequency, or with a higher forced frequency for a given load.

Compression Maximum Load lbf	Forcing Frequency in Cycles per Minute									
	675	850	950	1100	1250	1500	1750	2000	2500	
	Minimum Load for 81% Isolation (lbf)									
1475	—	—	—	1200	1040	650	470	320	170	

Shear Maximum Load lbf	Forcing Frequency in Cycles per Minute									
	675	850	950	1100	1250	1500	1750	2000	2500	
	Minimum Load for 81% Isolation (lbf)									
440	440	250	190	135	110	70	60	50	*	

\* At these forcing frequencies, lesser loads will yield less than 81% isolation.