

DIN 472
INTERNAL

PHONE: 516.328.3300 • FAX: 516.326.8827 • WWW.SDP-SI.COM

> MATERIAL:

Carbon Spring Steel

> FINISH:

Oil-Dipped

> SPECIFICATIONS:

D Tolerance:

8.7 to 17.3 mm +0.36/-0.10

18.3 to 23.5 mm +0.42/-0.13

25.9 & 26.9 mm +0.42/-0.21

d₁ Tolerance:

8.4 & 9.4 mm +0.09/0

10.4 to 17.8 mm +0.11/0

19 to 23 mm +0.13/0

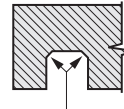
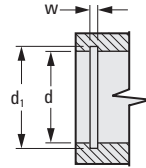
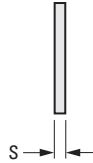
25.2 & 26.2 mm +0.21/0

S Tolerance:

0.8 mm 0/-0.05

1 & 1.2 mm 0/-0.06

Priced Per 100 Pieces



RADII 0.127 MAX.

METRIC COMPONENT

Catalog Number	D Free Dia.	d Housing Dia.	d ₁ Groove Dia.	w Groove Width +0.14 0	S Ring Thickness	Ring Thrust Strength kg
MD0472MQB008	8.7	8	8.4	0.9	0.8	204
MD0472MQB009	9.8	9	9.4	0.9	0.8	204
MD0472MQB010	10.8	10	10.4	1.1	1	408
MD0472MQB011	11.8	11	11.4	1.1	1	408
MD0472MQB012	13	12	12.5	1.1	1	408
MD0472MQB013	14.1	13	13.6	1.1	1	428
MD0472MQB014	15.1	14	14.6	1.1	1	459
MD0472MQB015	16.2	15	15.7	1.1	1	510
MD0472MQB016	17.3	16	16.8	1.1	1	561
MD0472MQB017	18.3	17	17.8	1.1	1	612
MD0472MQB018	19.5	18	19	1.1	1	663
MD0472MQB019	20.5	19	20	1.1	1	693
MD0472MQB020	21.5	20	21	1.1	1	734
MD0472MQB021	22.5	21	22	1.1	1	775
MD0472MQB022	23.5	22	23	1.1	1	816
MD0472MQB024	25.9	24	25.2	1.3	1.2	1417
MD0472MQB025	26.9	25	26.2	1.3	1.2	1489

DIN 471
EXTERNAL

PHONE: 516.328.3300 • FAX: 516.326.8827 • WWW.SDP-SI.COM



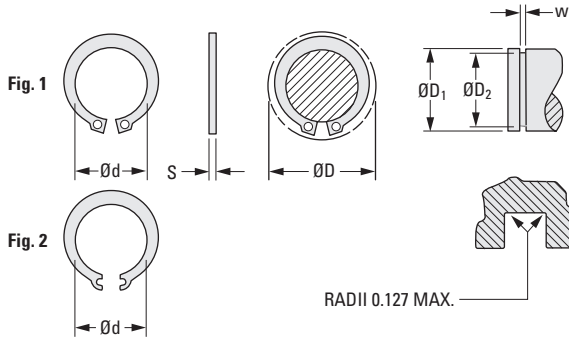
> **MATERIAL:**
Carbon Spring Steel

> **FINISH:**
Oil-Dipped

> **SPECIFICATIONS:**
d Tolerance:
2.7 mm +0.06/-0.12
3.7 to 5.6 mm +0.08/-0.15
6.5 to 8.4 mm +0.09/-0.18
9.3 mm +0.15/-0.30
10.2 to 14.7 mm +0.18/-0.36

D₂ Tolerance:
2.8 to 5.7 mm 0/-0.04
6.7 to 8.6 mm 0/-0.06
9.6 to 15.2 mm 0/-0.11

Priced Per 100 Pieces



METRIC COMPONENT

Catalog Number	d Free Dia.	D Dia. Ring Clear.	D ₁ Shaft Dia.	D ₂ Groove Dia.	w Groove Width +0.14 0	S Ring Thickness 0 -0.06	Ring Thrust Strength-kg Safety Factor = 4
*MD0471MQB003	2.7	7.4	3	2.8	0.5	0.4	68
*MD0471MQB004	3.7	8.8	4	3.8			90
*MD0471MQB005	4.7	10.7	5	4.8	0.7	0.6	176
*MD0471MQB006	5.6	12.2	6	5.7	0.8	0.7	252
*MD0471MQB007	6.5	13.8	7	6.7	0.9	0.8	341
*MD0471MQB008	7.4	15.2	8	7.6			390
*MD0471MQB009	8.4	16.4	9	8.6	1.1	1	560
MD0471MQB010	9.3	17.6	10	9.6			622
MD0471MQB011	10.2	18.6	11	10.5			685
MD0471MQB012	11	19.6	12	11.5			747
MD0471MQB013	11.9	20.8	13	12.4			809
MD0471MQB014	12.9	22	14	13.4			872
MD0471MQB015	13.8	23.3	15	14.3			935
MD0471MQB016	14.7	24.4	16	15.2			996

* Supplied with slots, not holes (see Fig. 2)

See next page for larger sizes.

I
R
T
1
2
3
4
5
6
7
8
9
10
11
12
13
14
15
A

DIN 471
EXTERNAL

PHONE: 516.328.3300 • FAX: 516.326.8827 • WWW.SDP-SI.COM

> MATERIAL:

Carbon Spring Steel

> FINISH:

Oil-Dipped

> SPECIFICATIONS:

d Tolerance:

17.5 mm +0.10/-0.36
19.5 & 20.5 mm +0.13/-0.42
24.2 & 29.6 mm +0.21/-0.42
36.5 & 43.5 mm +0.39/-0.90
57.8 & 70.5 mm +0.46/-1.10
84.5 & 113 mm +0.54/-1.30

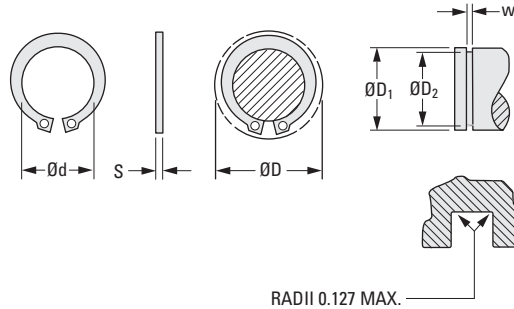
D₂ Tolerance:

18 mm 0/-0.11
20 to 24.9 mm 0/-0.21
30.3 to 44.5 mm 0/-0.25
59 & 72 mm 0/-0.3
86.5 mm 0/-0.35
116 mm 0/-0.54

w Tolerance:

1.3 to 2.65 mm +0.14/0
3.15 to 4.15 mm +0.18/0

Priced Per Each



METRIC COMPONENT

Catalog Number	d Free Dia.	D Dia. Ring Clear.	D ₁ Shaft Dia.	D ₂ Groove Dia.	w Groove Width	S Ring Thickness 0 -0.06	Ring Thrust Strength-kg Safety Factor = 4
MD0471MQB019	17.5	27.2	19	18	1.3	1.2	1631
MD0471MQB021	19.5	29.6	21	20	1.3	1.2	1811
MD0471MQB022	20.5	30.8	22	21	1.3	1.2	1901
MD0471MQB026	24.2	35.5	26	24.9	1.3	1.2	2475
MD0471MQB032	29.6	43	32	30.3	1.6	1.5	4725
MD0471MQB040	36.5	52.6	40	37.5	1.85	1.75	8572
MD0471MQB047	43.5	61.6	47	44.5	1.85	1.75	10125
MD0471MQB062	57.8	77.8	62	59	2.15	2	15975
MD0471MQB075	70.5	92.8	75	72	2.65	2.5	19350
MD0471MQB090	84.5	108.5	90	86.5	3.15	3*	27225
MD0471MQB120	113	143.1	120	116	4.15	4*	41625

* Tolerance: 0/-0.075

See previous page for smaller sizes.