

MOLDED  
NONMAGNETIC  
SELF-LUBRICATING  
NONCONDUCTIVE

PHONE: 516.328.3300 • FAX: 516.326.8827 • WWW.SDP-SI.COM



► **MATERIAL:**

Acetal Resin, Black

► **SPECIFICATION:**

Nominal bore d is for press fit on given size shaft.



**D<sub>2</sub> Hub Diameters**

d Bore	D <sub>2</sub> Dia.
Δ 3	6.3
4	7.9
6	9.5

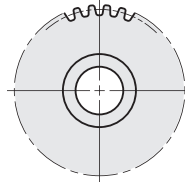


Fig. 1

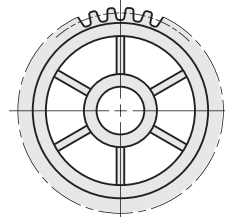
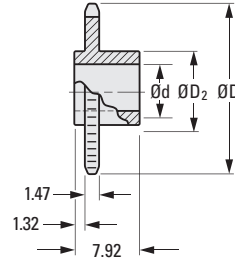
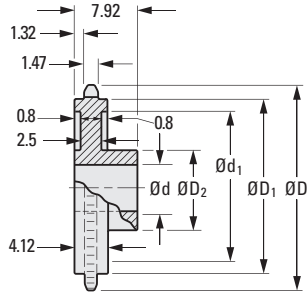


Fig. 2



**METRIC COMPONENT CATALOG NUMBER**

A 6 M 7 M 12

Suffix Code

No. of Teeth	Suffix Code			Fig. No.	Spokes	P.D.*	D * Dia.	Root *	Nominal Dimensions	
	Nominal Bore d								D <sub>1</sub> Dia.	d <sub>1</sub> Dia.
	3	4	6							
8	Δ 0803	—	—	1	—	8.1	9.4	6.6	—	—
9	0903	—	—	1	—	9	10.4	7.5	—	—
10	1003	1004	—	1	—	10	11.6	8.5	—	—
12	1203	1204	—	1	—	12	13.6	10.4	—	—
15	1503	1504	1506	1	—	14.9	16.5	13.4	—	—
16	1603	1604	1606	1	—	15.9	17.5	14.4	—	—
18	1803	1804	1806	1	—	17.8	19.5	16.3	—	—
20	2003	2004	2006	1	—	19.8	21.5	18.3	—	—
24	—	2404	2406	2	6	23.7	25.5	22.2	21.5	18.9
30	—	3004	3006	2	6	29.6	31.5	28.1	27.4	24.9
32	—	3204	3206	2	6	31.7	33.5	30.1	39.4	26.9
36	—	—	3606	2	8	35.6	37.3	34	33.3	30.8
40	—	—	4006	2	8	39.5	41.4	37.9	37.2	34.7
48	—	—	4806	2	8	47.4	49.3	45.8	45.1	42.6

\* Dimensions are -0.25 at 24°C

Δ 8 Tooth sprocket has 6 mm hub dia.

MINIATURE  
1.6 mm FACE

PHONE: 516.328.3300 • FAX: 516.326.8827 • WWW.SDP-SI.COM

**> MATERIAL:**

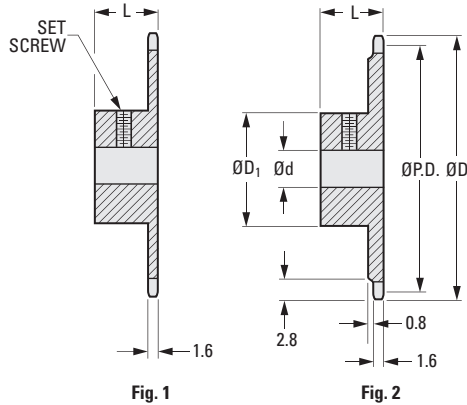
Stainless Steel Type 303

**> FINISH:**

Clear Passivated

**> SPECIFICATION:**

Ladder Chain A 6Y 8M375 can be used with these chain sprockets. See part number index at the beginning of this catalog.



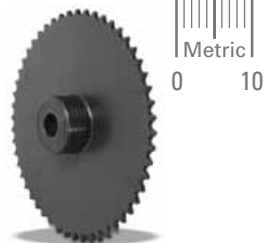
**METRIC COMPONENT**

Catalog Number	Fig. No.	No. of Teeth	P.D.	D Dia.	d Bore +0.025 0	L Length	D <sub>1</sub> Hub Dia.	Set Screw & Sub Drill
A 6X 7M1407	1	7	8.6	10	2.5	9	*6	—
A 6X 7M1408	1	8	9.8	11.1	4	9	*7	M2.5 0.75
A 6X 7M1409	1	9	10.9	12.3	4	9	*8	M2.5 0.75
A 6X 7M1410	1	10	12.1	13.4	4	9	*9	M2.5 0.75
A 6X 7M1412	1	12	14.5	15.8	4	9	10	M2.5 0.75
A 6X 7M1415	1	15	18	19.3	6	9	13	M3 1
A 6X 7M1416	1	16	19.2	20.5	6	9	14	M3 1
A 6X 7M1418	1	18	21.6	22.9	6	9	17	M3 1
A 6X 7M1420	1	20	24	25.3	6	10	19	M3 1
A 6X 7M1424	1	24	28.7	30	8	10	19	M4 1.8
A 6X 7M1428	1	28	33.5	34.8	8	10	19	M4 1.8
A 6X 7M1430	2	30	35.8	37.2	8	10	19	M4 1.8
A 6X 7M1434	2	34	40.6	41.9	8	10	19	M4 1.8
A 6X 7M1436	2	36	43	44.3	8	10	19	M4 1.8
A 6X 7M1440	2	40	47.8	49.1	8	10	19	M4 1.8
A 6X 7M1448	2	48	57.3	58.6	8	10	19	M4 1.8

\* Hubs are grooved 2 mm wide next to the sprocket to provide clearance for chain link plate.



MOLDED  
MINIATURE  
SINGLE STRAND  
NONCONDUCTIVE  
NONMAGNETIC  
SELF-LUBRICATING



► **MATERIAL:**

**Roller Chain** - Nylatron GS  
**Sprockets** - Nylatron GS



► **SPECIFICATION:**

Larger pitch plastic sprockets are available.  
See index. Also available in acetal, different bores, hub features and hubless.

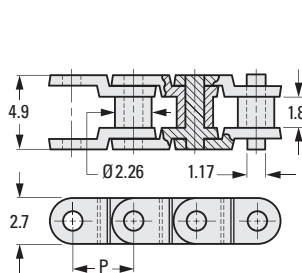


Fig. 1

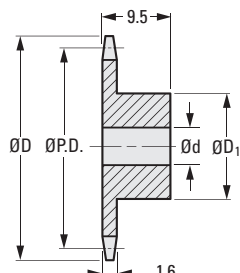


Fig. 2

**METRIC COMPONENT**

Catalog Number	P Pitch	Links Per Meter	Weight g/m
<b>Fig. 1 Roller Chain - Priced Per Meter</b>			
<b>A 6M 7MMT</b>	3.7465	267	2.64

Catalog Number	No. of Teeth	P.D.	D Dia.	d Bore	D <sub>1</sub> Hub Dia.
<b>Fig. 2 Sprockets</b>					
A 6M 7M1407	7	8.6	9.9	3	4.7
A 6M 7M1408	8	9.7	11	3	5.5
A 6M 7M1409	9	10.9	12.3	4	6.3
A 6M 7M1410	10	12.1	13.4	4	6.3
A 6M 7M1412	12	14.5	15.8	4	6.3
A 6M 7M1413	13	15.6	16.9	5	9.5
A 6M 7M1414	14	16.8	18.2	5	9.5
A 6M 7M1415	15	18	19.3	5	12.7
A 6M 7M1416	16	19.2	20.5	5	12.7
A 6M 7M1417	17	20.4	21.7	5	12.7
A 6M 7M1418	18	21.6	22.9	5	12.7
A 6M 7M1419	19	22.7	24.1	5	12.7
A 6M 7M1420	20	23.9	25.3	5	12.7
A 6M 7M1421	21	25.1	26.4	6	16
A 6M 7M1422	22	26.3	27.6	6	16
A 6M 7M1423	23	27.5	28.8	6	16
A 6M 7M1424	24	28.7	30	6	16

Catalog Number	No. of Teeth	P.D.	D Dia.	d Bore	D <sub>1</sub> Hub Dia.
<b>Fig. 2 Sprockets</b>					
A 6M 7M1425	25	29.9	31.2	6	16
A 6M 7M1426	26	31.1	32.4	6	16
A 6M 7M1427	27	32.3	33.6	6	16
A 6M 7M1428	28	33.5	34.8	6	16
A 6M 7M1429	29	34.6	36	6	16
A 6M 7M1430	30	35.8	37.2	6	16
A 6M 7M1431	31	37	38.4	6	16
A 6M 7M1432	32	38.2	39.5	6	16
A 6M 7M1433	33	39.4	40.7	6	16
A 6M 7M1434	34	40.6	41.9	6	16
A 6M 7M1435	35	41.8	43.1	6	16
A 6M 7M1436	36	43	44.3	6	16
A 6M 7M1438	38	45.4	46.7	6	16
A 6M 7M1440	40	47.7	49.1	6	16
A 6M 7M1442	42	50.1	51.5	6	16
A 6M 7M1444	44	52.5	53.8	6	16
A 6M 7M1452	52	62	63.4	6	16

# SPROCKETS FOR ROLLER CHAIN • 6.35 mm PITCH

# SDP/SI

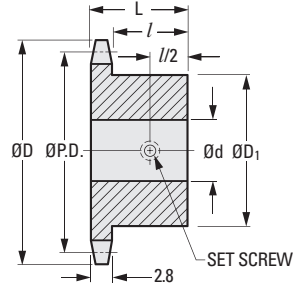
FOR SINGLE STRAND CHAINS  
2.8 mm FACE

PHONE: 516.328.3300 • FAX: 516.326.8827 • WWW.SDP-SI.COM



► **MATERIAL:**  
AISI C 1045 Steel

► **SPECIFICATION:**  
These sprockets can be used with standard #25, 1/4" pitch roller or ladder chains.



## METRIC COMPONENT

Catalog Number	No. of Teeth	P.D.	D Dia. (Ref.)	d Bore	L Length	D <sub>1</sub> Hub Dia.	l Hub Proj.	Set Screw
A 6C 7MHK2508	8	16.6	19.1	6	12.8	10	10	M4
A 6C 7MHK2509	9	18.6	21.3	6	12.8	10	10	M4
A 6C 7MHK2510	10	20.5	23.4	8	12.8	14	10	M4
A 6C 7MHK2511	11	22.5	25.4	8	12.8	16	10	M4
A 6C 7MHK2512	12	24.5	27.5	8	12.8	18	10	M4
A 6C 7MHK2513	13	26.5	29.6	8	12.8	20	10	M4
A 6C 7MHK2514	14	28.5	31.6	8	12.8	22	10	M4
A 6C 7MHK2515	15	30.5	33.7	8	12.8	22	10	M4
A 6C 7MHK2516	16	32.5	35.7	8	14.8	26	12	M4
A 6C 7MHK2517	17	34.6	37.8	8	14.8	26	12	M4
A 6C 7MHK2518	18	36.6	39.8	8	14.8	28	12	M4
A 6C 7MHK2519	19	38.6	41.9	8	14.8	28	12	M4
A 6C 7MHK2520	20	40.6	43.9	8	17.8	28	15	M4
A 6C 7MHK2521	21	42.6	45.9	8	17.8	35	15	M4
A 6C 7MHK2522	22	44.6	48	8	17.8	35	15	M4
A 6C 7MHK2523	23	46.6	50	8	17.8	35	15	M4
A 6C 7MHK2524	24	48.6	52	8	17.8	35	15	M4
A 6C 7MHK2525	25	50.7	54.1	8	17.8	35	15	M4
A 6C 7MHK2526	26	52.7	56.1	10	18	35	15.2	M5
A 6C 7MHK2528	28	56.7	60.2	10	18	38	15.2	M5
A 6C 7MHK2530	30	60.7	64.2	10	18	38	15.2	M5
A 6C 7MHK2532	32	64.8	68.3	12	18	42	15.2	M5

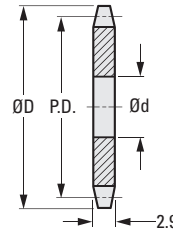
Root Dia. = P.D. -3.3

FOR SINGLE STRAND CHAINS  
2.9 mm FACE

PHONE: 516.328.3300 • FAX: 516.326.8827 • WWW.SDP-SI.COM

> **MATERIAL:**  
Steel

> **SPECIFICATION:**  
These sprockets can be used with standard #25, 1/4" pitch roller or ladder chains.



**METRIC COMPONENT**

Catalog Number	No. of Teeth	P.D.	D Dia. (Ref.)	d Bore Dia.
A 6C 7MYC25008	8	16.58	19.4	6
A 6C 7MYC25009	9	18.56	21.4	6
A 6C 7MYC25010	10	20.55	23.3	6
A 6C 7MYC25011	11	22.54	25.3	8
A 6C 7MYC25012	12	24.53	27.3	8
A 6C 7MYC25013	13	26.53	29.3	8
A 6C 7MYC25014	14	28.53	31.3	8
A 6C 7MYC25015	15	30.53	33.3	8
A 6C 7MYC25016	16	32.55	35.3	8
A 6C 7MYC25017	17	34.55	37.3	8
A 6C 7MYC25018	18	36.56	39.4	8
*A 6C 7MYC25018A	18	36.56	39.4	10
A 6C 7MYC25019	19	38.58	41.9	8
A 6C 7MYC25020	20	40.58	43.4	8
*A 6C 7MYC25020A	20	40.58	43.4	10
A 6C 7MYC25021	21	42.6	45.4	8
A 6C 7MYC25022	22	44.62	47.4	8
A 6C 7MYC25023	23	46.63	49.4	8
A 6C 7MYC25024	24	48.64	51.4	8
A 6C 7MYC25025	25	50.66	53.5	8
A 6C 7MYC25026	26	52.67	55.5	8
A 6C 7MYC25027	27	54.69	57.5	8
A 6C 7MYC25028	28	56.71	59.5	8

Catalog Number	No. of Teeth	P.D.	D Dia. (Ref.)	d Bore Dia.
A 6C 7MYC25029	29	58.73	61.5	8
A 6C 7MYC25030	30	60.75	63.6	8
A 6C 7MYC25031	31	62.76	65.6	10
A 6C 7MYC25032	32	64.78	67.6	10
A 6C 7MYC25033	33	66.8	69.6	10
A 6C 7MYC25034	34	68.82	71.6	10
A 6C 7MYC25035	35	70.84	73.6	10
A 6C 7MYC25036	36	72.85	75.6	10
A 6C 7MYC25037	37	74.87	77.7	10
A 6C 7MYC25038	38	76.89	79.7	10
A 6C 7MYC25039	39	78.91	81.7	10
A 6C 7MYC25040	40	80.93	83.7	10
A 6C 7MYC25041	41	82.95	85.7	10
A 6C 7MYC25042	42	84.97	87.8	10
A 6C 7MYC25043	43	86.98	89.8	10
A 6C 7MYC25044	44	89.01	91.8	10
*A 6C 7MYC25044A	44	89.01	91.8	12
A 6C 7MYC25045	45	91.03	93.8	10
A 6C 7MYC25046	46	93.05	95.8	10
A 6C 7MYC25047	47	95.07	97.9	10
A 6C 7MYC25048	48	97.09	99.9	10
A 6C 7MYC25049	49	99.11	101.9	10
A 6C 7MYC25050	50	101.13	103.9	10

\* Sprockets width = 2.5 mm.

Continued on the next page



# SPROCKETS FOR ROLLER CHAIN • 6.35 mm PITCH

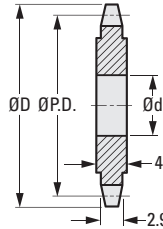
# SDP/SI

FOR SINGLE STRAND CHAINS  
2.9 mm FACE

PHONE: 516.328.3300 • FAX: 516.326.8827 • WWW.SDP-SI.COM

► **MATERIAL:**  
Steel

► **SPECIFICATION:**  
These sprockets can be used with standard #25, 1/4" pitch roller or ladder chains.



## METRIC COMPONENT

Catalog Number	No. of Teeth	P.D.	D Dia. (Ref.)	d Bore
A 6C 7MYC25051	51	103.14	105.9	12
A 6C 7MYC25052	52	105.16	108	12
A 6C 7MYC25053	53	107.18	110	12
A 6C 7MYC25054	54	109.18	112	12
A 6C 7MYC25055	55	111.23	114	12
A 6C 7MYC25056	56	113.25	116	12
*A 6C 7MYC25056A	56	115.27	116	14
A 6C 7MYC25057	57	115.27	118.1	12
A 6C 7MYC25058	58	117.29	120.1	12
A 6C 7MYC25059	59	119.31	122.1	12
A 6C 7MYC25060	60	121.32	124.1	12
A 6C 7MYC25061	61	123.34	126.1	12
A 6C 7MYC25062	62	125.37	128.2	12
A 6C 7MYC25063	63	127.38	130.2	12
A 6C 7MYC25064	64	129.41	132.2	12
A 6C 7MYC25065	65	131.43	134.2	12

Catalog Number	No. of Teeth	P.D.	D Dia. (Ref.)	d Bore
A 6C 7MYC25066	66	133.45	136.2	14
A 6C 7MYC25067	67	135.47	138.3	14
A 6C 7MYC25068	68	137.49	140.3	14
A 6C 7MYC25069	69	139.51	142.3	14
A 6C 7MYC25070	70	141.53	144.3	14
*A 6C 7MYC25070A	70	141.53	144.3	16
A 6C 7MYC25072	72	145.58	148.4	14
A 6C 7MYC25075	75	151.63	154.4	14
A 6C 7MYC25076	76	153.66	156.5	16
A 6C 7MYC25078	78	157.77	160.5	16
A 6C 7MYC25080	80	161.74	164.5	16
A 6C 7MYC25085	85	171.84	174.6	16
A 6C 7MYC25090	90	181.97	184.7	16
A 6C 7MYC25095	95	192.05	194.8	16
A 6C 7MYC25100	100	202.15	204.9	16
A 6C 7MYC25110	110	222.38	225.1	16
ΔA 6C 7MYC25114	114	230.45	233.2	16

\* Sprockets width = 5 mm length thru bore.

Δ To be discontinued when present stock is depleted

Continued from the previous page

I

R

T

1

2

3

4

5

6

7

8

9

10

11

12

13

14

15

A

FOR SINGLE STRAND CHAINS  
2.8 mm FACE

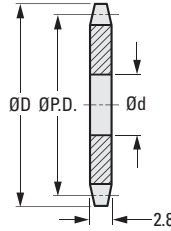
PHONE: 516.328.3300 • FAX: 516.326.8827 • WWW.SDP-SI.COM

**> MATERIAL:**

AISI C 1045 Steel

**> SPECIFICATION:**

These sprockets can be used with standard #25, 1/4" pitch roller or ladder chains.



**METRIC COMPONENT**

Catalog Number *	No. of Teeth	P.D.	D Dia. (Ref.)	d Bore
A 6C 7MYK2510	10	20.5	23.4	6
A 6C 7MYK2512	12	24.5	27.5	6
A 6C 7MYK2514	14	28.5	31.6	8
A 6C 7MYK2516	16	32.5	35.7	8
A 6C 7MYK2518	18	36.6	39.8	8
A 6C 7MYK2520	20	40.6	43.9	8
A 6C 7MYK2522	22	44.6	48	10
A 6C 7MYK2524	24	48.6	52	10
A 6C 7MYK2525	25	50.7	54.1	10
A 6C 7MYK2526	26	52.7	56.1	10
A 6C 7MYK2528	28	56.7	60.2	10
A 6C 7MYK2532	32	64.8	68.3	12
A 6C 7MYK2534	34	68.8	72.3	12
A 6C 7MYK2536	36	72.9	76.4	12
A 6C 7MYK2540	40	80.9	84.5	12
A 6C 7MYK2545	45	91	94.6	15
A 6C 7MYK2550	50	101.1	107.7	15
A 6C 7MYK2555	55	111.2	114.9	15
A 6C 7MYK2560	60	121.3	125	15

\* To be discontinued when the present stock is depleted.  
Root Dia. = P.D. -3.3

# SPROCKETS FOR ROLLER CHAIN • 6.35 mm PITCH

**SDP/SI**

MOLDED WITH METAL INSERT  
FOR SINGLE STRAND  
2.8 mm FACE

PHONE: 516.328.3300 • FAX: 516.326.8827 • WWW.SDP-SI.COM



0 10



**> MATERIAL:**

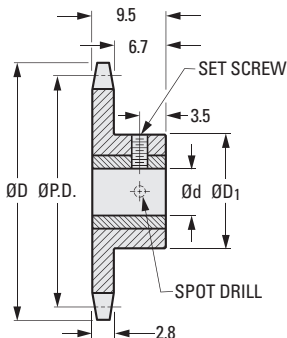
**Sprockets** - Acetal Resin, White  
**Insert** - Aluminum

**> SPECIFICATIONS:**

These sprockets can be used with standard #25, 1/4" pitch roller or ladder chains. Other bore sizes are available on special order.

**Sprockets with:**

6 mm bore have an M3 set screw & spot drill.  
8 mm bore have an M4 set screw & spot drill.



**METRIC COMPONENT**

Catalog Number	No. of Teeth	P.D.	D Dia.	d Bore +0.025/0	D <sub>1</sub> Hub Dia.
A 6Z 7M251006	10	20.5	23	6	12
A 6Z 7M251008	10	20.5	23	8	12
A 6Z 7M251206	12	24.5	27	6	15
A 6Z 7M251208	12	24.5	27	8	15
A 6Z 7M251506	15	30.6	34	6	15
A 6Z 7M251508	15	30.6	34	8	15
A 6Z 7M251606	16	32.6	36	6	15
A 6Z 7M251608	16	32.6	36	8	15
A 6Z 7M251706	17	34.6	38	6	15
A 6Z 7M251708	17	34.6	38	8	15
A 6Z 7M251806	18	36.6	40	6	15
A 6Z 7M251808	18	36.6	40	8	15
A 6Z 7M251906	19	38.6	42	6	15
A 6Z 7M251908	19	38.6	42	8	15
A 6Z 7M252006	20	40.6	44	6	15
A 6Z 7M252008	20	40.6	44	8	15
A 6Z 7M252406	24	48.6	52	6	15
A 6Z 7M252408	24	48.6	52	8	15
A 6Z 7M252508	25	50.7	54	8	17
A 6Z 7M253008	30	60.8	64	8	17
A 6Z 7M253208	32	64.8	68	8	17
A 6Z 7M253608	36	72.9	76	8	17
A 6Z 7M254006	40	80.9	85	6	17
A 6Z 7M254008	40	80.9	85	8	17



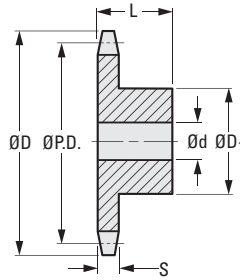
6, 8 & 9.525 mm PITCH  
 MOLDED  
 2.6, 2.8, & 5.3 mm WIDE  
 DIN 8187

PHONE: 516.328.3300 • FAX: 516.326.8827 • WWW.SDP-SI.COM



**> MATERIAL:**  
 Acetal

**> SPECIFICATION:**  
**Sprockets with:**  
 8 & 10 mm bores have a tolerance of +0.022/0  
 12 & 15 mm bores have a tolerance of +0.027/0



**METRIC COMPONENT**

Catalog Number	Pitch	No. of Teeth	P.D. (Ref.)	D Dia.	d Bore H8	S Face Width	L Length	D1 Hub Dia.
<b>Sprockets for 6 x 2.8 mm, 4 mm Diameter Roller Chain</b>								
A 6M 7MHZ06013	6	13	25.1	27.5	8	2.6	10	18
A 6M 7MHZ06015	6	15	28.9	31	8	2.6	10	21
A 6M 7MHZ06015A	6	15	28.9	31	12	2.6	10	21
A 6M 7MHZ06017	6	17	32.7	35	8	2.6	13	24
A 6M 7MHZ06019	6	19	36.5	39	8	2.6	13	24
A 6M 7MHZ06021	6	21	40.3	42.5	10	2.6	13	28
A 6M 7MHZ06023	6	23	44.1	46.5	10	2.6	13	28
A 6M 7MHZ06025	6	25	47.9	50	10	2.6	13	28
<b>Sprockets for 8 x 3 mm, 5 mm Diameter Roller Chain</b>								
A 6M 7MHZ08013	8	13	33.4	36.5	8	2.8	13	24
A 6M 7MHZ08015	8	15	38.5	41.5	8	2.8	13	24
A 6M 7MHZ08017	8	17	43.5	46.5	10	2.8	14	28
A 6M 7MHZ08019	8	19	48.6	52	10	2.8	14	28
A 6M 7MHZ08021	8	21	53.7	57	10	2.8	14	28
A 6M 7MHZ08023	8	23	58.8	62.5	10	2.8	14	28
A 6M 7MHZ08025	8	25	63.8	67	10	2.8	14	28
<b>Sprockets for 9.525 x 5.72 mm, 6.35 mm Diameter Roller Chain</b>								
A 6M 7MHZ09513	9.525 (3/8")	13	39.8	43	8	5.3	16	24
A 6M 7MHZ09513A	9.525 (3/8")	13	39.8	43	15	5.3	16	24
A 6M 7MHZ09515	9.525 (3/8")	15	45.8	49	8	5.3	16	24
A 6M 7MHZ09517	9.525 (3/8")	17	51.8	55.5	10	5.3	16	28
A 6M 7MHZ09519	9.525 (3/8")	19	57.9	61.5	10	5.3	16	28
A 6M 7MHZ09521	9.525 (3/8")	21	63.8	68	12	5.3	20	32
A 6M 7MHZ09523	9.525 (3/8")	23	70	74	12	5.3	20	32
A 6M 7MHZ09525	9.525 (3/8")	25	76	80	12	5.3	20	32

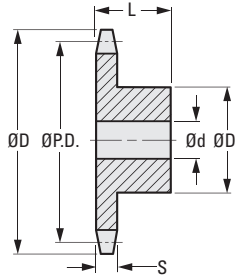
MOLDED  
3, 4.4 & 7.2 mm WIDE  
DIN 8187

PHONE: 516.328.3300 • FAX: 516.326.8827 • WWW.SDP-SI.COM



➤ **MATERIAL:**  
Acetal

➤ **SPECIFICATION:**  
Sprockets with:  
8 & 10 mm bores have a tolerance of +0.022/0  
12 & 16 mm bores have a tolerance of +0.027/0



**METRIC COMPONENT**

Catalog Number	Pitch	No. of Teeth	P.D. (Ref.)	D Dia.	d Bore H8	S Face Width	L Length	D <sub>1</sub> Hub Dia.
<b>Sprockets for 12.7 x 3.3 mm, 7.75 mm Diameter Roller Chain</b>								
A 6M 7MHZ12713A	12.7 (1/2")	13	53.1	58	8	3	16	24
A 6M 7MHZ12715A	12.7 (1/2")	15	61.1	66	8	3	16	24
A 6M 7MHZ12717A	12.7 (1/2")	17	69.1	74	10	3	18	28
A 6M 7MHZ12719A	12.7 (1/2")	19	77.2	82	10	3	18	28
A 6M 7MHZ12721A	12.7 (1/2")	21	85.2	90.5	12	3	20	32
A 6M 7MHZ12723A	12.7 (1/2")	23	93.3	98.5	12	3	20	32
A 6M 7MHZ12725A	12.7 (1/2")	25	101.3	107	12	3	20	32
<b>Sprockets for 12.7 x 4.88 mm, 7.75 mm Diameter Roller Chain</b>								
A 6M 7MHZ12713B	12.7 (1/2")	13	53.1	58	8	4.4	17.4	24
A 6M 7MHZ12715B	12.7 (1/2")	15	61.1	66	8	4.4	17.4	24
A 6M 7MHZ12717B	12.7 (1/2")	17	69.1	74	10	4.4	19.4	28
A 6M 7MHZ12719B	12.7 (1/2")	19	77.2	82	10	4.4	19.4	28
A 6M 7MHZ12721B	12.7 (1/2")	21	85.2	90.5	12	4.4	21.4	32
A 6M 7MHZ12723B	12.7 (1/2")	23	93.3	98.5	12	4.4	21.4	32
A 6M 7MHZ12725B	12.7 (1/2")	25	101.3	107	12	4.4	21.4	32
<b>Sprockets for 12.7 x 7.75 mm, 8.51 mm Diameter Roller Chain</b>								
A 6M 7MHZ12713C	12.7 (1/2")	13	53.1	58	10	7.2	20	28
A 6M 7MHZ12715C	12.7 (1/2")	15	61.1	66	10	7.2	20	28
A 6M 7MHZ12717C	12.7 (1/2")	17	69.1	74	12	7.2	25	32
A 6M 7MHZ12719C	12.7 (1/2")	19	77.2	82	12	7.2	25	32
A 6M 7MHZ12721C	12.7 (1/2")	21	85.2	90.5	16	7.2	25	36
A 6M 7MHZ12723C	12.7 (1/2")	23	93.3	98.5	16	7.2	25	36
A 6M 7MHZ12725C	12.7 (1/2")	25	101.3	107	16	7.2	25	36