

# MINIATURE ROLLER CHAIN • 3.75 mm PITCH



SINGLE STRAND  
RIVETED

PHONE: 516.328.3300 • FAX: 516.326.8827 • WWW.SDP-SI.COM

➤ **MATERIAL:**

Stainless Steel Type 18-8

➤ **FINISH:**

Clear Passivated

➤ **AVERAGE TENSILE LOAD:**

778 N

➤ **SPECIFICATION:**

Sizes not listed are available on request.  
All lengths include and are supplied with  
connecting link A 6Y 7M37CHA.

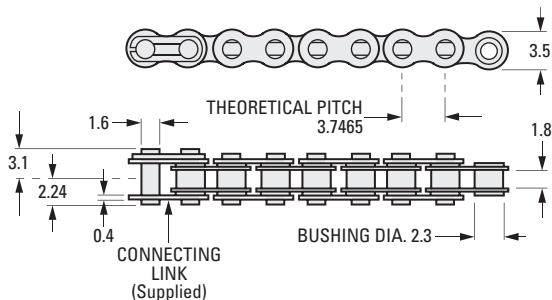
➤ **WEIGHT:**

50 grams per meter



<b>CONNECTING LINK (SNAP TYPE)</b>	
<b>Catalog Number</b>	
<b>A 6Y 7M37CHA</b>	

<b>BUSHING LINK</b>	
<b>Catalog Number</b>	
<b>A 6Y 7M37BL</b>	



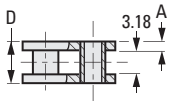
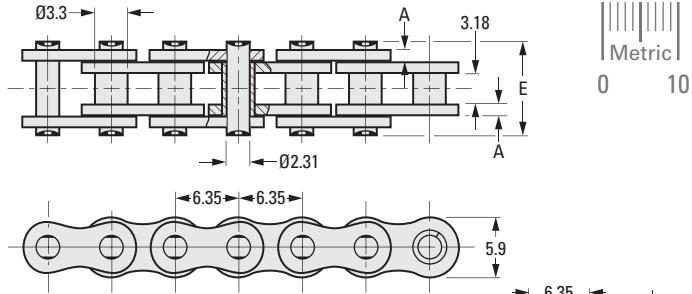
## METRIC COMPONENT

Catalog Number	No. of Links	Length mm
A 6Y 7MM040	40	150
A 6Y 7MM050	50	187
A 6Y 7MM060	60	225
A 6Y 7MM070	70	262
A 6Y 7MM080	80	300
A 6Y 7MM090	90	337
A 6Y 7MM100	100	375
A 6Y 7MM110	110	412
A 6Y 7MM120	120	450
A 6Y 7MM130	130	487
A 6Y 7MM140	140	525
A 6Y 7MM150	150	562
A 6Y 7MM160	160	599
A 6Y 7MM170	170	637
A 6Y 7MM180	180	674
A 6Y 7MM190	190	712
A 6Y 7MM200	200	749
A 6Y 7MM210	210	787
A 6Y 7MM220	220	824
A 6Y 7MM230	230	862
A 6Y 7MM240	240	899

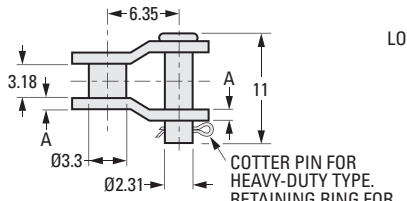
STANDARD DUTY  
HEAVY-DUTY  
SINGLE STRAND  
RIVETED

PHONE: 516.328.3300 • FAX: 516.326.8827 • WWW.SDP-SI.COM

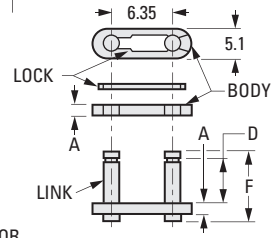
► **MATERIAL:**  
Stainless Steel  
Hardened Steel



**Fig. 1**  
Roller  
Connecting  
Link



**Fig. 2\***  
Single Offset  
Connecting  
Link



**Fig. 3**  
Spring Clip  
Connecting  
Link

**METRIC COMPONENT**

Catalog Number	Material	A Thickness	D	E	F	Tensile Load N	Weight Per Meter kg / m
<b>Roller Chain - Standard-Duty Type - Priced Per Meter</b>							
A 6Q 7M25	Hardened Steel	.78	4.8	7.8	8.4	3500	0.13
A 6Y 7M25	Stainless Steel	.78	4.8	7.8	8.4	2500	0.13

Roller Chain (Ref.)	Material	Roller (Fig. 1)	Single Offset * (Fig. 2)	Spring Clip (Fig. 3)
<b>Connecting Links - For Standard-Duty Type Chain - Priced Per Piece</b>				
A 6Q 7M25	Hardened Steel	A 6Q 7M25RL	—	A 6Q 7M25SCCL
A 6Y 7M25	Stainless Steel	A 6Y 7M25RL	A 6Y 7M25OSCLS	A 6Y 7M25SCCL

**METRIC COMPONENT**

Catalog Number	Material	A Thickness	D	E	F	Tensile Load N	Weight Per Meter kg / m
<b>Roller Chain - Heavy-Duty Type - Priced Per Meter</b>							
A 6Q 7MH25	Hardened Steel	1.03	5.35	8.9	9.7	5200	0.16
A 6Y 7MH25	Stainless Steel	1.03	5.35	8.9	9.7	2500	0.16

Roller Chain (Ref.)	Material	Roller (Fig. 1)	Single Offset * (Fig. 2)	Spring Clip (Fig. 3)
<b>Connecting Links - For Heavy-Duty Type Chain - Priced Per Piece</b>				
A 6Q 7MH25	Hardened Steel	A 6Q 7MH25RL	A 6Q 7MH25OSCLS	A 6Q 7MH25SCCL
A 6Y 7MH25	Stainless Steel	A 6Y 7MH25RL	A 6Y 7MH25OSCLS	A 6Y 7MH25SCCL

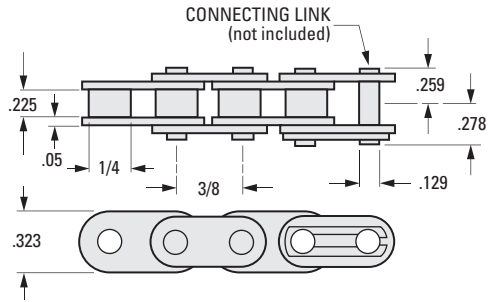
\* To be discontinued when present stock is depleted.

I  
R  
T  
1  
2  
3  
4  
5  
6  
7  
8  
9  
10  
11  
12  
13  
14  
15  
16

SINGLE STRAND  
RIVETED

PHONE: 516.328.3300 • FAX: 516.326.8827 • WWW.SDP-SI.COM

> **MATERIAL:**  
Stainless Steel



**METRIC COMPONENT**

Catalog Number	Average Tensile Load N	Average Weight Per Meter kg/m
<b>Roller Chain - Priced Per Meter</b>		
A 6Y77M37	5500	0.41



**METRIC COMPONENT**

Catalog Number	Type of Connecting Link
<b>Connecting Links (For Roller Chain)</b>	
A 6Y77M37SCCL	Spring Clip

- I
- R
- T
- 1
- 2**
- 3
- 4
- 5
- 6
- 7
- 8
- 9
- 10
- 11
- 12
- 13
- 14
- 15
- A