

NONSLIP  
3/16, 1/4 & 5/16 DIAMETER

PHONE: 516.328.3300 • FAX: 516.326.8827 • WWW.SDP-SI.COM

**> MATERIAL:**

**Belting** - Polyurethane  
**Connectors** - Aluminum



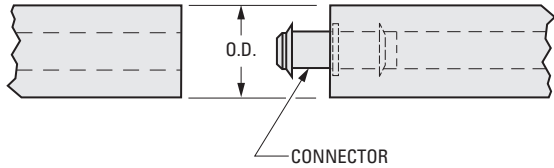
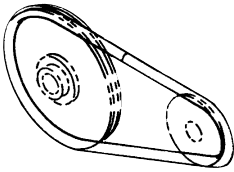
**> OPERATING TEMPERATURE:**

-40° F to +150° F

**> INSTALLATIONS:**

**For Open Drives** - Make belt endless and roll onto pulleys.

**For Closed Drives** - String belt around pulleys, insert connector and roll onto pulleys.

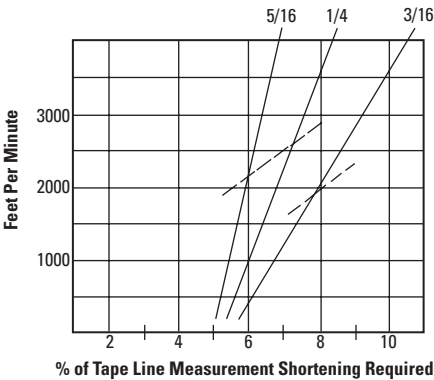


**INCH COMPONENT**

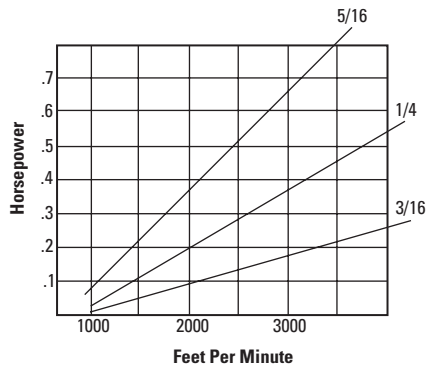
Catalog Number Belting	O.D.	Recommended Minimum Pulley Dia.	Coefficient of Friction	Catalog Number Connectors
<b>Priced Per Foot</b>				<b>Priced Per 10 Pieces</b>
A 6R 1-A06	3/16	1-1/2	.5 to .7	A 6A 1-C06
A 6R 1-A08	1/4	2	.5 to .7	A 6A 1-C08
A 6R 1-A10	5/16	2-1/2	.5 to .7	A 6A 1-C10

These belts can be used with Companion Pulleys and Grooved Idlers, having diameters at least 8 times belt diameters. See index.

**Table No. 1 Installed Belt Tension**



**Table No. 2 Maximum hp Capacity**



--- Maximum Feet Per Minute for Minimum Pulley Diameter