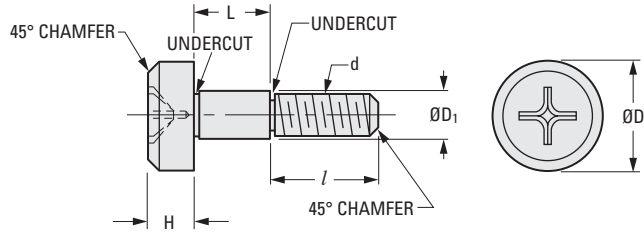


> MATERIAL:

303 Stainless Steel

PHONE: 516.328.3300 • FAX: 516.326.8827 • WWW.SDP-SI.COM



The projections shown are per ISO convention.

METRIC COMPONENT

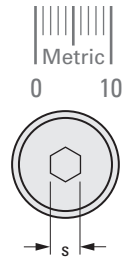
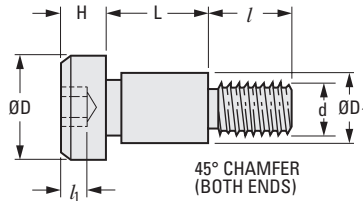
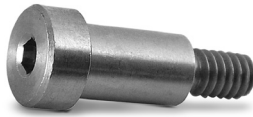
Catalog Number	d Thread Size	D Dia.	D ₁ 0 -0.025	H	L +0.05 0	l	Phillips Size
*S706Y3M3005	M3 x 0.5	6	3.987	3	5.013	4	#1
S706Y3M3006	M3 x 0.5	6	3.987	3	6.013	4	#1
*S706Y3M3007	M3 x 0.5	6	3.987	3	7.013	4	#1
S706Y3M3008	M3 x 0.5	6	3.987	3	8.013	4	#1
S706Y3M3010	M3 x 0.5	6	3.987	3	10.013	4	#1
S706Y3M4008	M4 x 0.7	8	4.987	4	8.013	5	#2
S706Y3M4010	M4 x 0.7	8	4.987	4	10.013	5	#2
S706Y3M4012	M4 x 0.7	8	4.987	4	12.013	5	#2
S706Y3M4014	M4 x 0.7	8	4.987	4	14.013	5	#2
S706Y3M4016	M4 x 0.7	8	4.987	4	16.013	5	#2
S706Y3M4020	M4 x 0.7	8	4.987	4	20.013	5	#2
S706Y3M4025	M4 x 0.7	8	4.987	4	25.013	5	#2
S706Y3M4030	M4 x 0.7	8	4.987	4	30.013	5	#2
S706Y3M5010	M5 x 0.8	10	5.987	5	10.013	6	#2
S706Y3M5014	M5 x 0.8	10	5.987	5	14.013	6	#2
S706Y3M5020	M5 x 0.8	10	5.987	5	20.013	6	#2
*S706Y3M5025	M5 x 0.8	10	5.987	5	25.013	6	#2
S706Y3M5030	M5 x 0.8	10	5.987	5	30.013	6	#2
S706Y3M6012	M6 x 1.0	12	7.987	6	12.013	11	#3
S706Y3M6020	M6 x 1.0	12	7.987	6	20.013	11	#3
S706Y3M6010	M6 x 1.0	12	9.987	6	10.013	11	#3
S706Y3M6016	M6 x 1.0	12	9.987	6	16.013	11	#3
S706Y3M8012	M8 x 1.25	14	9.987	7	12.013	12	#4
S706Y3M8015	M8 x 1.25	14	9.987	7	15.013	12	#4
S706Y3MA020	M10 x 1.5	20	11.987	8	20.013	16	#4
S706Y3MA025	M10 x 1.5	20	11.987	8	25.013	16	#4

* To be discontinued when present stock is depleted.

I
R
T
1
2
3
4
5
6
7
8
9
10
11
12
13
14
15
A

> MATERIAL:
303 Stainless Steel

PHONE: 516.328.3300 • FAX: 516.326.8827 • WWW.SDP-SI.COM



The projections shown are per ISO convention.

METRIC COMPONENT

Catalog Number	d Thread Size	D Dia.	D ₁ Dia. 0 -0.078	H	L +0.2 +0.05	l	l ₁	s
A 9X25M0304	M3 x 0.5	6	4	3	4	4	1.6	2
A 9X25M0305	M3 x 0.5	6	4	3	5	4	1.6	2
A 9X25M0306	M3 x 0.5	6	4	3	6	4	1.6	2
A 9X25M0308	M3 x 0.5	6	4	3	8	4	1.6	2
A 9X25M0310	M3 x 0.5	6	4	3	10	4	1.6	2
A 9X25M0404	M4 x 0.7	8	5	4	4	5	2	2.5
A 9X25M0405	M4 x 0.7	8	5	4	5	5	2	2.5
A 9X25M0406	M4 x 0.7	8	5	4	6	5	2	2.5
A 9X25M0408	M4 x 0.7	8	5	4	8	5	2	2.5
A 9X25M0410	M4 x 0.7	8	5	4	10	5	2	2.5
A 9X25M0412	M4 x 0.7	8	5	4	12	5	2	2.5
A 9X25M0414	M4 x 0.7	8	5	4	14	5	2	2.5
A 9X25M0416	M4 x 0.7	8	5	4	16	5	2	2.5
A 9X25M0420	M4 x 0.7	8	5	4	20	5	2	2.5
A 9X25M0425	M4 x 0.7	8	5	4	25	5	2	2.5
A 9X25M0430	M4 x 0.7	8	5	4	30	5	2	2.5
A 9X25M0504	M5 x 0.8	10	6	5	4	6	2.4	3
A 9X25M0505	M5 x 0.8	10	6	5	5	6	2.4	3
A 9X25M0506	M5 x 0.8	10	6	5	6	6	2.4	3
A 9X25M0508	M5 x 0.8	10	6	5	8	6	2.4	3
A 9X25M0510	M5 x 0.8	10	6	5	10	6	2.4	3
A 9X25M0512	M5 x 0.8	10	6	5	12	6	2.4	3
A 9X25M0514	M5 x 0.8	10	6	5	14	6	2.4	3
A 9X25M0516	M5 x 0.8	10	6	5	16	6	2.4	3
A 9X25M0520	M5 x 0.8	10	6	5	20	6	2.4	3
A 9X25M0525	M5 x 0.8	10	6	5	25	6	2.4	3
A 9X25M0530	M5 x 0.8	10	6	5	30	6	2.4	3
A 9X25M0606	M6 x 1	12	8	6	6	11	3.2	4
A 9X25M0608	M6 x 1	12	8	6	8	11	3.2	4
A 9X25M0610	M6 x 1	12	8	6	10	11	3.2	4
A 9X25M0612	M6 x 1	12	8	6	12	11	3.2	4
A 9X25M0616	M6 x 1	12	8	6	16	11	3.2	4
A 9X25M0620	M6 x 1	12	8	6	20	11	3.2	4
A 9X25M0608A	M6 x 1	12	10	6	8	11	3.2	4
A 9X25M0610A	M6 x 1	12	10	6	10	11	3.2	4
A 9X25M0612A	M6 x 1	12	10	6	12	11	3.2	4
A 9X25M0616A	M6 x 1	12	10	6	16	11	3.2	4
A 9X25M0808	M8 x 1.25	14	10	7	8	12	4	5
A 9X25M0810	M8 x 1.25	14	10	7	10	12	4	5
A 9X25M0812	M8 x 1.25	14	10	7	12	12	4	5
A 9X25M0816	M8 x 1.25	14	10	7	16	12	4	5
A 9X25M1012A	M10 x 1.5	20	12	8	12	16	4.8	6
A 9X25M1016A	M10 x 1.5	20	12	8	16	16	4.8	6
A 9X25M1020	M10 x 1.5	20	12	8	20	16	4.8	6
A 9X25M1025	M10 x 1.5	20	12	8	25	16	4.8	6

SOCKET HEAD SHOULDER SCREWS

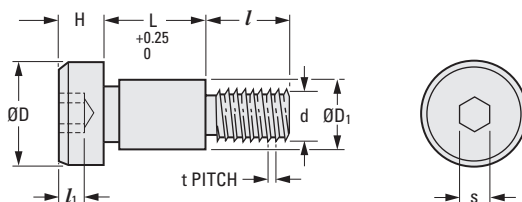
SDP/SI

STANDARD SHOULDER LENGTH SERIES

PHONE: 516.328.3300 • FAX: 516.326.8827 • WWW.SDP-SI.COM

> MATERIAL:

Steel



The projections shown are per ISO convention.

METRIC COMPONENT

Catalog Number	d	L	D Dia.	D ₁ Dia.	H	s	L ₁	L	t
A 9C25M0505	M5	5	12	6	4	3.5	2.4	6	0.8
A 9C25M0506		6							
A 9C25M0608	M6	8	14	8	4	4.5	3.2	8	1
A 9C25M0610		10							
A 9C25M0810	M8	10	16	10	5	6	4	10	1.25
A 9C25M0812		12							
A 9C25M1012	M10	12	20	12	6	7	4.8	12	1.5
A 9C25M1016		16							

1

2

3

4

5

6

7

8

9

10

11

12

13

14

15

16

17

18

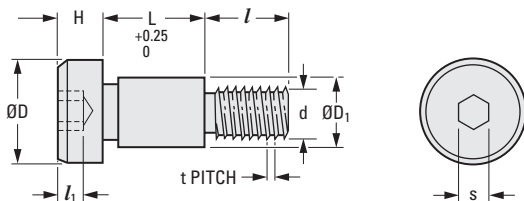
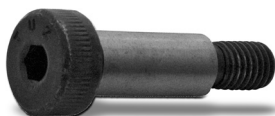
19

20

10-5A
D805

A

> MATERIAL:
Steel



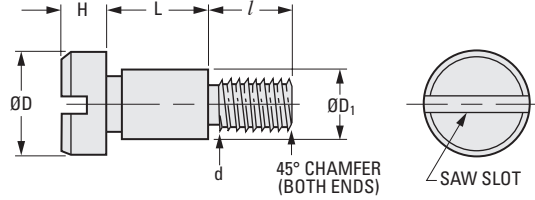
The projections shown are per ISO convention.

METRIC COMPONENT

Catalog Number	d	L	D Dia.	D ₁ Dia.	H	s	l ₁	l	t
A 9C25ML0510	M5	10	10	6 -0.01/-0.04	4.5	3	2	9.5	0.8
A 9C25ML0512		12							
A 9C25ML0516		16							
A 9C25ML0520		20							
A 9C25ML0525		25							
A 9C25ML0530		30							
A 9C25ML0540		40							
A 9C25ML0612	M6	12	13	8 -0.013/-0.049	5.5	4	2.4	11	1
A 9C25ML0616		16							
A 9C25ML0620		20							
A 9C25ML0625		25							
A 9C25ML0630		30							
A 9C25ML0640		40							
A 9C25ML0650		50							
A 9C25ML0816	M8	16	16	10 -0.013/-0.049	7	5	3.3	13	1.25
A 9C25ML0820		20							
A 9C25ML0825		25							
A 9C25ML0830		30							
A 9C25ML0840		40							
A 9C25ML0850		50							
A 9C25ML0860		60							
A 9C25ML0870	70								
A 9C25ML0880	80								
A 9C25ML1016	M10	16	18	12 -0.016/-0.059	8	6	4.2	16	1.5
A 9C25ML1020		20							
A 9C25ML1025		25							
A 9C25ML1030		30							
A 9C25ML1040		40							
A 9C25ML1050		50							
A 9C25ML1060		60							
A 9C25ML1070		70							
A 9C25ML1080		80							

► **MATERIAL:**
303 Stainless Steel

PHONE: 516.328.3300 • FAX: 516.326.8827 • WWW.SDP-SI.COM



The projections shown are per ISO convention.

METRIC COMPONENT

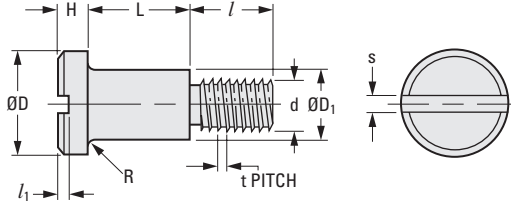
Catalog Number	d Thread Size	D Dia.	D ₁ 0 -0.078	H	L +0.2 +0.05	l
A 9X15M0304	M3 x 0.5	6	4	3	4	4
A 9X15M0305	M3 x 0.5	6	4	3	5	4
A 9X15M0306	M3 x 0.5	6	4	3	6	4
A 9X15M0308	M3 x 0.5	6	4	3	8	4
A 9X15M0310	M3 x 0.5	6	4	3	10	4
A 9X15M0404	M4 x 0.7	8	5	4	4	5
A 9X15M0405	M4 x 0.7	8	5	4	5	5
A 9X15M0406	M4 x 0.7	8	5	4	6	5
A 9X15M0408	M4 x 0.7	8	5	4	8	5
A 9X15M0410	M4 x 0.7	8	5	4	10	5
A 9X15M0412	M4 x 0.7	8	5	4	12	5
A 9X15M0414	M4 x 0.7	8	5	4	14	5
A 9X15M0416	M4 x 0.7	8	5	4	16	5
A 9X15M0420	M4 x 0.7	8	5	4	20	5
A 9X15M0425	M4 x 0.7	8	5	4	25	5
A 9X15M0430	M4 x 0.7	8	5	4	30	5
A 9X15M0504	M5 x 0.8	10	6	5	4	6
A 9X15M0505	M5 x 0.8	10	6	5	5	6
A 9X15M0506	M5 x 0.8	10	6	5	6	6
A 9X15M0508	M5 x 0.8	10	6	5	8	6
A 9X15M0510	M5 x 0.8	10	6	5	10	6
A 9X15M0512	M5 x 0.8	10	6	5	12	6
A 9X15M0514	M5 x 0.8	10	6	5	14	6
A 9X15M0516	M5 x 0.8	10	6	5	16	6
A 9X15M0520	M5 x 0.8	10	6	5	20	6
A 9X15M0525	M5 x 0.8	10	6	5	25	6
A 9X15M0530	M5 x 0.8	10	6	5	30	6
A 9X15M0606	M6 x 1	12	8	6	6	11
A 9X15M0608	M6 x 1	12	8	6	8	11
A 9X15M0610	M6 x 1	12	8	6	10	11
A 9X15M0612	M6 x 1	12	8	6	12	11
A 9X15M0616	M6 x 1	12	8	6	16	11
A 9X15M0620	M6 x 1	12	8	6	20	11
A 9X15M0608A	M6 x 1	12	10	6	8	11
A 9X15M0616A	M6 x 1	12	10	6	16	11
A 9X15M0808	M8 x 1.25	14	10	7	8	12
A 9X15M0810	M8 x 1.25	14	10	7	10	12
A 9X15M0816	M8 x 1.25	14	10	7	16	12
A 9X15M1012	M10 x 1.5	20	12	8	12	16
A 9X15M1016	M10 x 1.5	20	12	8	16	16
A 9X15M1025	M10 x 1.5	20	12	8	25	16

DIN 923
SHALLOW HEAD

PHONE: 516.328.3300 • FAX: 516.326.8827 • WWW.SDP-SI.COM

► **MATERIAL:**
Steel

► **SPECIFICATION:**
Priced Per 100 Pieces



The projections shown are per ISO convention.

METRIC COMPONENT

Catalog Number	Thread Size	L Length
MD0923MCO03X002	M3	2
MD0923MCO03X0025	M3	2.5
MD0923MCO03X003	M3	3
MD0923MCO03X004	M3	4
MD0923MCO03X005	M3	5
MD0923MCO03X006	M3	6
MD0923MCO03X008	M3	8
MD0923MCO03X010	M3	10
MD0923MCO04X002	M4	2
MD0923MCO04X0025	M4	2.5
MD0923MCO04X003	M4	3
MD0923MCO04X004	M4	4
MD0923MCO04X005	M4	5
MD0923MCO04X006	M4	6
MD0923MCO04X008	M4	8
MD0923MCO04X010	M4	10
MD0923MCO04X012	M4	12
MD0923MCO04X016	M4	16
MD0923MCO05X0025	M5	2.5
MD0923MCO05X003	M5	3
MD0923MCO05X004	M5	4
MD0923MCO05X005	M5	5
MD0923MCO05X006	M5	6

Catalog Number	Thread Size	L Length
MD0923MCO05X008	M5	8
MD0923MCO05X010	M5	10
MD0923MCO05X012	M5	12
MD0923MCO05X016	M5	16
MD0923MCO06X003	M6	3
MD0923MCO06X004	M6	4
MD0923MCO06X005	M6	5
MD0923MCO06X006	M6	6
MD0923MCO06X008	M6	8
MD0923MCO06X010	M6	10
MD0923MCO06X012	M6	12
MD0923MCO06X016	M6	16
MD0923MCO06X020	M6	20
MD0923MCO08X004	M8	4
MD0923MCO08X005	M8	5
MD0923MCO08X006	M8	6
MD0923MCO08X008	M8	8
MD0923MCO08X010	M8	10
MD0923MCO08X012	M8	12
MD0923MCO08X016	M8	16
MD0923MCO08X020	M8	20
MD0923MCO08X025	M8	25

Dimensions	Thread Size				
	M3	M4	M5	M6	M8
d					
D Dia.	7	8.5	11	13	16
D ₁ Dia. h9	4	5.5	7	8	10
H	1.8	2.4	2.7	3.1	3.8
s	0.8	1	1.2	1.6	2
l ₁ Min.	0.9	1.2	1.3	1.5	1.9
l	4.5	6	7	9	11
R Max.	0.1	0.2	0.2	0.25	1.4
t	0.5	0.7	0.8	1	1.25

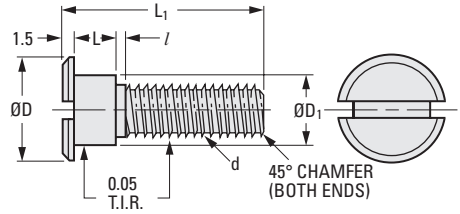
L Shoulder Length	Tolerance
2, 2.5, 3	+0.10 +0.06
4, 5, 6, 8, 10	+0.15 +0.07
12, 16, 20, 25	+0.2 +0.1

SLOTTED HEAD

PHONE: 516.328.3300 • FAX: 516.326.8827 • WWW.SDP-SI.COM

> MATERIAL:

303 Stainless Steel



The projections shown are per ISO convention.

METRIC COMPONENT

Catalog Number	d Thread Size	D Dia.	D ₁ Dia. 0 -0.025	L	L ₁	l
A 7Y 5MCF1	M2 x 0.4	5	3	3.75	11.5	0.6
A 7Y 5MCF2	M3 x 0.5	6	4	3.75	13.5	0.75
A 7Y 5MCF3	M3 x 0.5	6	4	4.75	14.5	0.75
A 7Y 5MCF4	M5 x 0.8	8	6	4.75	18.5	1.2
A 7Y 5MCF5	M6 x 1	10	8	4.75	22.5	1.5



> DID YOU KNOW?

That you can see a video showing how the Fairloc® integral fastener works and how it can benefit your application. It is located at: www.sdp-si.com/fairloc.