

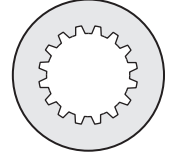
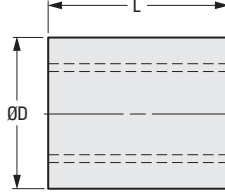
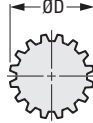
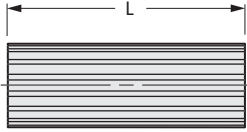
EXTERNAL
INTERNAL

➤ **MATERIAL:**

External Splines – Steel
Internal Spline Bushings – Steel or Brass

➤ **SPECIFICATIONS:**

External Splines are priced per stock length.
Internal Spline Bushings are priced per piece.



EXTERNAL SPLINE SHOWN

INTERNAL SPLINE BUSHING SHOWN

METRIC COMPONENT

| Catalog Number | Nominal Size | No. of Teeth | Stock Length cm |
|---------------------------------|--------------|--------------|-----------------|
| External Splines – Steel | | | |
| A 1C25M12050 | 12 | 16 | 50 |
| A 1C25M12100 | 12 | 16 | 100 |
| A 1C25M12150 | 12 | 16 | 150 |
| A 1C25M15050 | 15 | 16 | 50 |
| A 1C25M15100 | 15 | 16 | 100 |
| A 1C25M15150 | 15 | 16 | 150 |
| A 1C25M17050 | 17 | 16 | 50 |
| A 1C25M17100 | 17 | 16 | 100 |
| A 1C25M17150 | 17 | 16 | 150 |
| A 1C25M20050 | 20 | 16 | 50 |
| A 1C25M20100 | 20 | 16 | 100 |
| A 1C25M20150 | 20 | 16 | 150 |

| Catalog Number | Nominal Size | No. of Teeth | D Dia. | L |
|---|--------------|--------------|--------|----|
| Internal Spline Bushings – Steel | | | | |
| A 1C26M123035 | 12 | 16 | 30 | 35 |
| A 1C26M154040 | 15 | 16 | 40 | 40 |
| A 1C26M174551 | 17 | 16 | 45 | 51 |
| A 1C26M205051 | 20 | 16 | 50 | 51 |
| Internal Spline Bushings – Brass | | | | |
| A 1B26M122535 | 12 | 16 | 25 | 35 |
| A 1B26M152540 | 15 | 16 | 25 | 40 |
| A 1B26M173051 | 17 | 16 | 30 | 51 |
| A 1B26M203551 | 20 | 16 | 35 | 51 |

For technical information, see preceding page.

EXTERNAL
INTERNAL

PHONE: 516.328.3300 • FAX: 516.326.8827 • WWW.SDP-SI.COM

➤ **MATERIAL:**
Carbon Steel

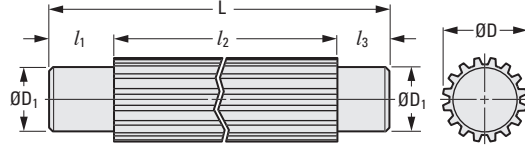
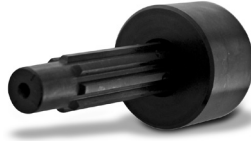


Fig. 1

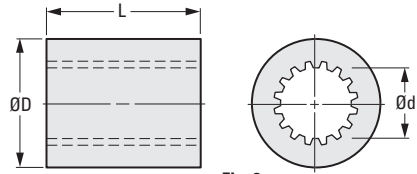


Fig. 2

METRIC COMPONENT

| Catalog Number | Nominal Size | No. of Teeth | D Dia. | l_1 | l_2 | l_3 | L cm | D_1 Dia. |
|--------------------------------|--------------|--------------|--------|-------|-------|-------|------|------------|
| Fig. 1 External Splines | | | | | | | | |
| A 1C25MH1517 | 15 | 8 | 16.67 | 20 | 135 | 15 | 17 | 13 |
| A 1C25MH1820 | 18 | 10 | 19.67 | 20 | 165 | 15 | 20 | 15 |
| A 1C25MH2325 | 23 | 13 | 24.67 | 30 | 220 | – | 25 | 20 |
| A 1C25MH2830 | 28 | 16 | 29.67 | 30 | 270 | – | 30 | 25 |

| Catalog Number | Nominal Size | No. of Teeth | d Dia. | D Dia. | L |
|--|--------------|--------------|--------|--------|----|
| Fig. 2 Internal Spline Bushings | | | | | |
| A 1C26MH1540 | 15 | 8 | 13.7 | 40 | 25 |
| A 1C26MH1845 | 18 | 10 | 16.7 | 45 | 30 |
| A 1C26MH2355 | 23 | 13 | 21.7 | 55 | 38 |
| A 1C26MH2865 | 28 | 16 | 26.7 | 65 | 45 |