

SPRING POSTS



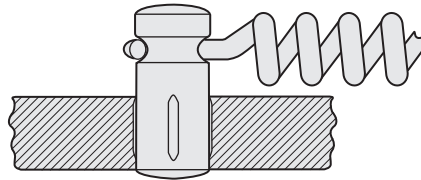
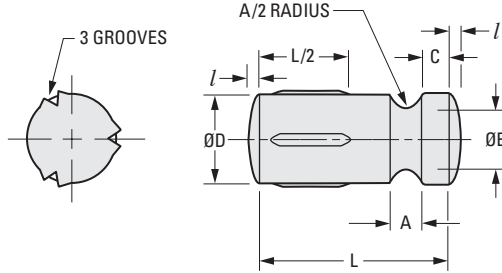
GROOVE PIN (TYPE G)
1/8 TO 1/4 DIAMETER

PHONE: 516.328.3300 • FAX: 516.326.8827 • WWW.SDP-SI.COM



> **MATERIAL:**
Carbon Steel, Zinc Plated

> **SPECIFICATION:**
Priced Per 100 Pieces



INCH COMPONENT

Catalog Number	D Dia.	Recommended Hole Size		L Length	A	E Dia.	C	Crown Radius	I Crown Height
		Max.	Min.						
S7270Y-12512	1/8	.1270	.1250	3/8	.064	.083	1/32	5/32	.013
S7270Y-12516				1/2					
S7270Y-12520				5/8					
S7270Y-12524				3/4					
S7270Y-12532				1					
*S7270Y-12540				1-1/4					
S7270Y-18712	3/16	.1900	.1880	3/8	.064	.125	3/64	1/4	.019
S7270Y-18716				1/2					
S7270Y-18720				5/8					
S7270Y-18724				3/4					
S7270Y-18728				7/8					
S7270Y-18732				1					
*S7270Y-18740	1-1/4								
S7270Y-25016	1/4	.2530	.2500	1/2	.096	.167	1/16	5/16	.026
S7270Y-25020				5/8					
S7270Y-25024				3/4					
S7270Y-25028				7/8					
S7270Y-25040				1-1/4					

* To be discontinued when present stock is depleted.

- I
- R
- T
- 1
- 2
- 3
- 4
- 5
- 6
- 7
- 8
- 9
- 10
- 11
- 12
- 13
- 14
- 15
- 16