

## SQUARE HOLE BUSHINGS

PHONE: 516.328.3300 • FAX: 516.326.8827 • WWW.SDP-SI.COM

**> MATERIAL:**

4140 Steel

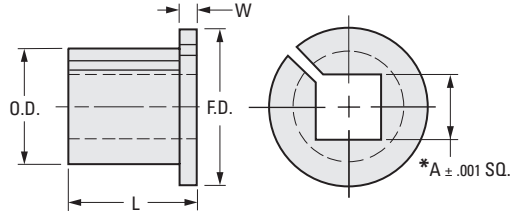
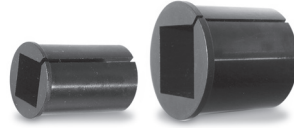
**> FEATURES:**

Fits ANY mating size collet, or 3-jawed chucks.  
Provides good concentricity without time consuming adjustments.  
Costs a fraction of the price of square collets.

**> HARDNESS:**

Rc 40-45

\* Before Slotting



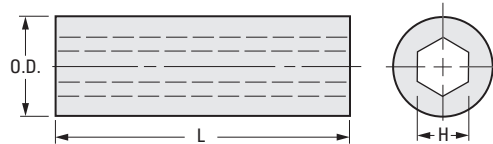
### INCH COMPONENT

Catalog Number	Tool Bit Size	A Square	L Length	O.D.	F.D.	W Flange Width
A 7C18-03	3/16	.1915	3/4	.375	1/2	1/16
A 7C18-04	1/4	.255	1	.468	9/16	1/16
A 7C18-05	5/16	.3175	1	.562	11/16	1/16
A 7C18-06	3/8	.380	1	.656	3/4	1/16
A 7C18-07	7/16	.4425	1-1/4	.750	7/8	1/16
A 7C18-08	1/2	.505	1-1/4	.812	7/8	1/16
A 7C18-10	5/8	.630	1-1/2	1.000	1-1/8	1/16
A 7C18-12	3/4	.755	1-1/2	1.187	1-3/8	1/8
A 7C18-14	7/8	.880	1-3/4	1.375	1-1/2	1/8
A 7C18-16	1	1.008	2	1.562	1-5/8	1/8
A 7C18-18	1-1/8	1.130	2	1.750	1-7/8	1/8
A 7C18-19	1-3/16	1.190	2	1.812	2	1/8
A 7C18-20	1-1/4	1.260	2	2.000	2-1/8	1/8

## HEX HOLE SLEEVES

**> MATERIAL:**

Carbon Steel AISI C1117,  
May be Case-Hardened



### INCH COMPONENT

Catalog Number	H Hex Size ± .001	L Length	O.D. (Stock)
A 7C20-02	.128	3/4	1/4
A 7C20-03	.190	1-1/2	3/8
A 7C20-04	.253	2	1/2
A 7C20-05	.315	2-1/4	9/16
A 7C20-06	.378	2-1/2	5/8
A 7C20-07	.440	2-5/8	3/4
A 7C20-08	.503	2-3/4	13/16
A 7C20-10	.628	3-1/4	1

PLAIN  
THREADED

PHONE: 516.328.3300 • FAX: 516.326.8827 • WWW.SDP-SI.COM

**> MATERIAL:**

C.R.S. 1117 ( May be Case-Hardened)

**> CONCENTRICITY:**

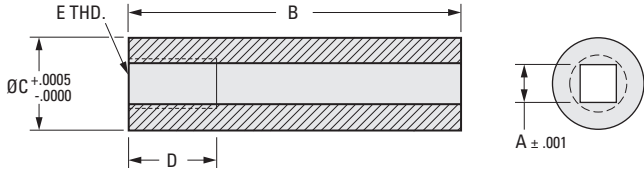
.003 T.I.R. Between O.D & Square Hole

**> SPECIFICATION:**

Square Hole Sleeves are available in two styles:  
One with a tapped hole at one end to receive a back-up screw which we supply.  
Other with a squared hole end to end without thread or back-up screw.



Sleeves also may be ordered with .015 grinding stock on O.D., if desired. Add "G" to catalog number.  
Tolerance is the same as on standard O.D.



## INCH COMPONENT

Catalog Number	Tool Bit Size	A Square	B Length	C O.D.	D Thread Depth	E Thread
<b>Plain</b>						
A 7C19-P012	1/8	.128	3/4	.2187	—	—
A 7C19-P018	3/16	.1915	1-1/2	.3125	—	—
A 7C19-P025	1/4	.255	2	.4375	—	—
A 7C19-P031	5/16	.3175	2-1/4	.5000	—	—
A 7C19-P037	3/8	.380	2-1/2	.5937	—	—
A 7C19-P043	7/16	.4425	2-5/8	.6875	—	—
A 7C19-P050	1/2	.505	2-3/4	.7812	—	—
A 7C19-P062	5/8	.630	3-1/4	.9375	—	—
A 7C19-P075	3/4	.755	4	1.1250	—	—
A 7C19-P087	7/8	.880	4	1.3125	—	—
A 7C19-P100	1	1.008	5	1.5000	—	—
A 7C19-P125	1-1/4	1.260	5	2.0000	—	—
<b>Threaded</b>						
A 7C19-T012	1/8	.128	3/4	.2187	1/4	#10-32
A 7C19-T018	3/16	.1915	1-1/2	.3125	7/16	1/4-28
A 7C19-T025	1/4	.255	2	.4375	1/2	5/16-24
A 7C19-T031	5/16	.3175	2-1/4	.5000	9/16	3/8-24
A 7C19-T037	3/8	.380	2-1/2	.5937	5/8	1/2-20
A 7C19-T043	7/16	.4425	2-5/8	.6875	5/8	1/2-20
A 7C19-T050	1/2	.505	2-3/4	.7812	5/8	5/8-18
A 7C19-T062	5/8	.630	3-1/4	.9375	1	3/4-16
A 7C19-T075	3/4	.755	4	1.1250	1	1-14
A 7C19-T087	7/8	.880	4	1.3125	1	1-14
A 7C19-T100	1	1.008	5	1.5000	1-1/2	1-1/8-12
A 7C19-T125	1-1/4	1.260	5	2.0000	1-1/2	1-1/2-12

- I
- R
- T
- 1
- 2
- 3
- 4
- 5
- 6
- 7
- 8
- 9
- 10
- 11
- 12
- 13
- 14
- 15
- 16