

43 mm SQUARE HOUSING

PHONE: 516.328.3300 • FAX: 516.326.8827 • WWW.SDP-SI.COM

> MATERIAL:

- Housing - Machined Aluminum
- Gears - Steel
- Mating Motor Pinion - Steel

> OPERATING TEMPERATURE:

-10°C to +60°C

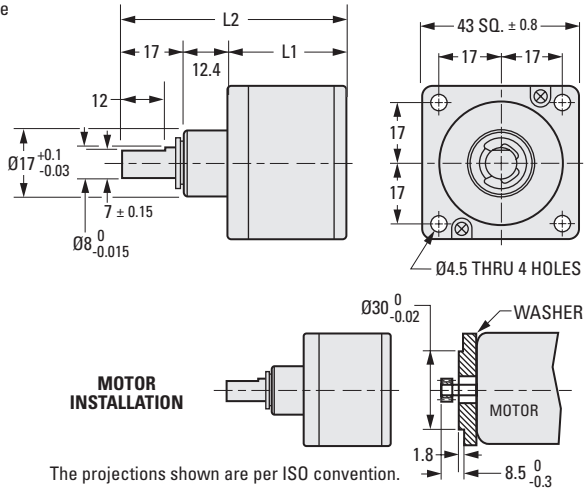
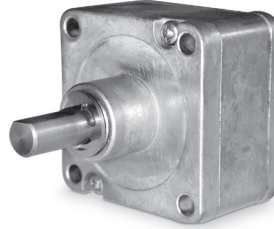
> FEATURES:

- Small size and high output.
- Decreased noise and smooth rotation due to the use of high-precision gears.
- Stable quality.
- Excellent durability.

> SPECIFICATIONS:

- Radial Play of Shaft: ≤ 0.1 mm
- Thrust Play of Shaft: ≤ 0.5 mm

These gearheads can be used as replacements for **D33S43ME38... & D33S43MFST...** Series gearmotors. See index.



The projections shown are per ISO convention.

METRIC COMPONENT

Catalog Number *	Ratio to 1	L1 Length	L2 Overall Length	Efficiency %	Max. Continuous Torque N • m (lb. in.)
Gearheads					
A 2G32ME0014	14	25.9	55.3	66	0.88 (7.79)
A 2G32ME0017	17.3	25.9	55.3	66	0.88 (7.79)
A 2G32ME0024	24	25.9	55.3	66	0.88 (7.79)
A 2G32ME0049	49	32.7	62.1	53	1.96 (17.35)
A 2G32ME0061	60.7	32.7	62.1	53	1.96 (17.35)
A 2G32ME0104	104	32.7	62.1	53	1.96 (17.35)
A 2G32ME0144	144	32.7	62.1	53	1.96 (17.35)
A 2G32ME0213	212.3	39.4	68.8	43	1.96 (17.35)
A 2G32ME0294	294	39.4	68.8	43	1.96 (17.35)
A 2G32ME0624	624	39.4	68.8	43	1.96 (17.35)
A 2G32ME0864	864	39.4	68.8	43	1.96 (17.35)

* To be discontinued when present stock is depleted.

Catalog Number *	No. of Teeth	Module	P.D.	O.D.	Bore -0.015 -0.035	Face Width	For Ratio to 1
Mating Motor Pinion for Gearheads							
A 1C 8MYS06012	12	0.6	7.2	8.4	4	4	24, 84, 104, 144, 294, 504, 624, 864
A 1C 8MYS06018	18	0.6	10.7	11.9	4	4	17.3, 60.7, 212.3
A 1C 8MYS06024	24	0.6	14.3	15.5	4	4	14, 49

* To be discontinued when present stock is depleted.

I
R
T
1
2
3
4
5
6
7
8
9
10
11
12
13
14
15
A

48 mm SQUARE HOUSING

PHONE: 516.328.3300 • FAX: 516.326.8827 • WWW.SDP-SI.COM



> MATERIAL:

- Housing - Machined Aluminum
- Shafts & Gears - Steel
- Bearings - Bronze
- Mating Motor Pinion - Steel

> OPERATING TEMPERATURE:

-10°C to +60°C

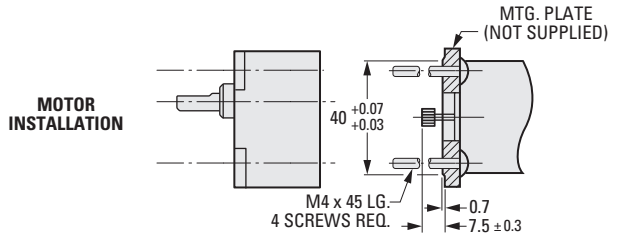
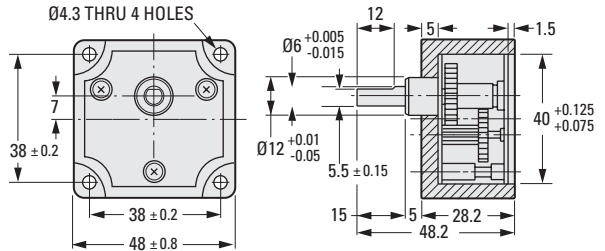
> FEATURES:

- Small size and high output.
- The input and output shafts have different center lines.
- Decreased noise and smooth rotation due to the use of high-precision gears.
- Stable quality.
- Excellent durability.

> SPECIFICATIONS:

- Radial Play of Shaft: ≤ 0.1 mm
- Thrust Play of Shaft: ≤ 0.3 mm

These gearheads can be used as replacements for **D33S40M...** and **D33S57M40B...** Series gearmotors.



METRIC COMPONENT

Catalog Number *	Ratio to 1	Shaft Rotation	Efficiency %	Maximum Torque N • m (lb. in.)	
				Continuous	Momentary
Gearheads					
A 2G31MB0013	12.67	Same	81	0.29 (2.6)	0.88 (7.8)
A 2G31MB0026	26.31	Reverse	73	0.49 (4.3)	1.47 (13)
A 2G31MB0030	29.56	Reverse	73	0.49 (4.3)	1.47 (13)
A 2G31MB0051	50.66	Reverse	73	0.49 (4.3)	1.47 (13)
A 2G31MB0152	152	Same	66	0.98 (8.7)	2.94 (26)

* To be discontinued when present stock is depleted.

Catalog Number	Number of Teeth	Module	P.D.	O.D.	Bore -0.014 -0.030	Face Width
Mating Motor Pinion for Gearheads						
A 1C 8MYS04012	12	0.4	4.88	5.68	3	4

60 mm SQUARE HOUSING
HIGH TORQUE

PHONE: 516.328.3300 • FAX: 516.326.8827 • WWW.SDP-SI.COM



> MATERIAL:

- Housing** - Machined Aluminum
- Shafts & Gears** - Steel
- Bearings** - Bronze
- Mating Motor Pinion** - Brass

> OPERATING TEMPERATURE:

-10°C to +60°C

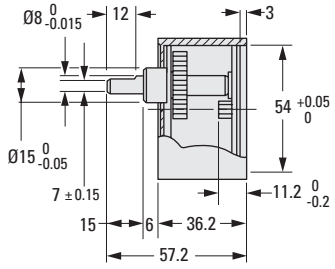
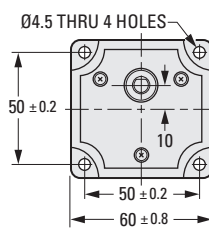
> FEATURES:

- Small size and high output.
- The input and output shafts have different center lines.
- Decreased noise and smooth rotation due to the use of high-precision gears.
- Stable quality.
- Excellent durability.

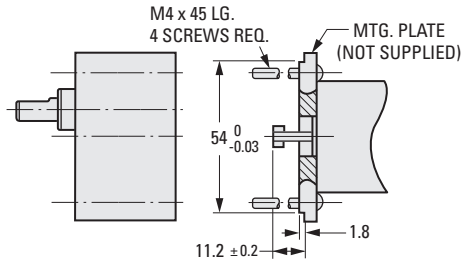
> SPECIFICATIONS:

- Radial Play of Shaft:** ≤ 0.1 mm
- Thrust Play of Shaft:** ≤ 0.5 mm

These gearheads can be used as replacements for **D33S52M...** and **D33S57M54D...** Series gearmotors.



MOTOR INSTALLATION



METRIC COMPONENT

Catalog Number *	Ratio to 1	Shaft Rotation	Efficiency %	Maximum Torque N • m (lb. in.)	
				Continuous	Momentary
Gearheads					
A 2G30MD0030	30	Reverse	73	0.78 (6.9)	2.35 (20.8)
A 2G30MD0060	60	Same	66	1.96 (17.3)	5.88 (52)
A 2G30MD0090	90	Same	66	1.96 (17.3)	5.88 (52)
A 2G30MD0140	140	Same	66	1.96 (17.3)	5.88 (52)
A 2G30MD0160	160	Same	66	1.96 (17.3)	5.88 (52)

* To be discontinued when present stock is depleted.

Catalog Number	Number of Teeth	Module	P.D.	O.D.	Bore -0.02 -0.04	Face Width
Mating Motor Pinion for Gearheads						
A 1B 8MYS05012	12	0.5	6.2	7.2	4	4



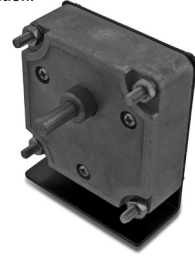
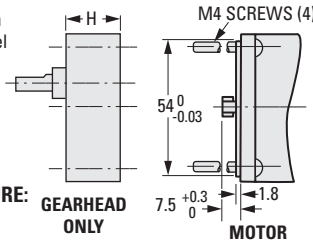
60 mm SQUARE HOUSING

PHONE: 516.328.3300 • FAX: 516.326.8827 • WWW.SDP-SI.COM

➤ MATERIAL:

- Housing** - Die Cast Aluminum
- Bracket** - Steel, Black Enamel
- Shaft** - Steel
- Gears** - Steel & Phenolic
- Bearings** - Input - Ball
- Output - Bronze
- Mating Motor Pinion** - Brass

The projections shown are per ISO convention.



➤ OPERATING TEMPERATURE:

-10°C to +60°C

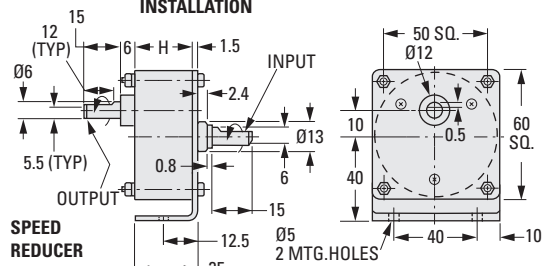
➤ SPECIFICATIONS:

- Radial Play of Shaft: ≤ 0.1 mm
- Thrust Play of Shaft: ≤ 0.3 mm

➤ APPROX. WEIGHT:

0.026 kg (Speed Reducer)

These gearheads can be used as replacements for A 3G25M... & D33S54M... Series gearmotors



Catalog Number *		Gear Ratio to 1	Shaft Rotation	H	Efficiency %	Maximum Torque N • m (lb. in.)	
Speed Reducers	Gearheads Only					Continuous	Momentary
A 2Z25M0006	-	6	Same	19	81	0.1 (0.9)	0.3 (2.7)
A 2Z25M0008	A 2G25M0008	7.5	Same	19	81	0.1 (0.9)	0.3 (2.7)
A 2Z25M00010	A 2G25M00010	10	Same	19	81	0.2 (1.8)	0.6 (5.3)
A 2Z25M0012H	A 2G25M0012H	12.5	Reverse	19	81	0.2 (1.8)	0.6 (5.3)
A 2Z25M0020	A 2G25M0020	20	Same	19	81	0.3 (2.7)	0.9 (8.0)
A 2Z25M0025	A 2G25M0025	25	Reverse	21.5	73	0.4 (3.5)	1.18 (10.4)
A 2Z25M0030	A 2G25M0030	30	Reverse	21.5	73	0.4 (3.5)	1.18 (10.4)
A 2Z25M0036	A 2G25M0036	36	Reverse	21.5	73	0.4 (3.5)	1.18 (10.4)
A 2Z25M0040	A 2G25M0040	40	Reverse	21.5	73	0.4 (3.5)	1.18 (10.4)
A 2Z25M0050	A 2G25M0050	50	Reverse	21.5	73	0.7 (6.2)	2.07 (18.3)
A 2Z25M0060	A 2G25M0060	60	Reverse	21.5	73	0.7 (6.2)	2.07 (18.3)
A 2Z25M0100	A 2G25M0100	100	Reverse	21.5	73	1 (8.9)	2.96 (26.2)
A 2Z25M0120	A 2G25M0120	120	Same	24	66	1 (8.9)	2.96 (26.2)
A 2Z25M0150	A 2G25M0150	150	Same	24	66	1 (8.9)	2.96 (26.2)
A 2Z25M0180	A 2G25M0180	180	Same	24	66	1 (8.9)	2.96 (26.2)
A 2Z25M0200	A 2G25M0200	200	Same	24	66	1 (8.9)	2.96 (26.2)
A 2Z25M0250	A 2G25M0250	250	Same	24	66	1 (8.9)	2.96 (26.2)
A 2Z25M0300	A 2G25M0300	300	Same	24	66	1 (8.9)	2.96 (26.2)
A 2Z25M0360	A 2G25M0360	360	Same	24	66	1 (8.9)	2.96 (26.2)
A 2Z25M0450	A 2G25M0450	450	Reverse	26.5	59	1 (8.9)	2.96 (26.2)
A 2Z25M0500	A 2G25M0500	500	Same	24	66	1 (8.9)	2.96 (26.2)
A 2Z25M0750	A 2G25M0750	750	Reverse	26.5	59	1 (8.9)	2.96 (26.2)
A 2Z25M0900	A 2G25M0900	900	Reverse	26.5	59	1 (8.9)	2.96 (26.2)
A 2Z25M1000	A 2G25M1000	1000	Reverse	26.5	59	1 (8.9)	2.96 (26.2)
A 2Z25M1200	A 2G25M1200	1200	Reverse	26.5	59	1 (8.9)	2.96 (26.2)
A 2Z25M1500	A 2G25M1500	1500	Reverse	26.5	59	1 (8.9)	2.96 (26.2)
A 2Z25M1800	A 2G25M1800	1800	Reverse	26.5	59	1 (8.9)	2.96 (26.2)
A 2Z25M2000	A 2G25M2000	2000	Reverse	26.5	59	1 (8.9)	2.96 (26.2)

* To be discontinued when present stock is depleted.

Catalog Number	Number of Teeth	Module	P.D.	O.D.	Bore -0.02 -0.04	Face Width
Mating Motor Pinion for Gearheads						
A 1B 8MYS05012	12	0.5	6.2	7.2	4	4