

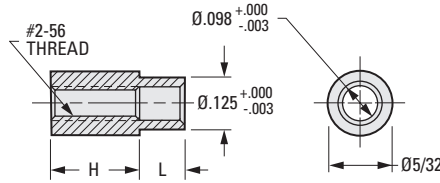
ROUND STAND-OFFS



THREADED
SWAGE TYPE
5/32 O.D.

PHONE: 516.328.3300 • FAX: 516.326.8827 • WWW.SDP-SI.COM

➤ **MATERIAL:**
Brass, Zinc Plated



INCH COMPONENT

Catalog Number	H Height	L Length	Panel Thickness
A 9B43-D104	1/8	.075	1/32
A 9B43-D106	3/16	.075	1/32
A 9B43-D112	3/8	.075	1/32
A 9B43-D116	1/2	.075	1/32
A 9B43-D204	1/8	.105	1/16
A 9B43-D206	3/16	.105	1/16
A 9B43-D208	1/4	.105	1/16
A 9B43-D212	3/8	.105	1/16
A 9B43-D216	1/2	.105	1/16
A 9B43-D304	1/8	.135	3/32
A 9B43-D306	3/16	.135	3/32
A 9B43-D308	1/4	.135	3/32
A 9B43-D312	3/8	.135	3/32
A 9B43-D316	1/2	.135	3/32
A 9B43-D404	1/8	.165	1/8
A 9B43-D406	3/16	.165	1/8
A 9B43-D408	1/4	.165	1/8
A 9B43-D412	3/8	.165	1/8
A 9B43-D416	1/2	.165	1/8

- I
- R
- T
- 1
- 2
- 3
- 4
- 5
- 6
- 7
- 8
- 9
- 10
- 11
- 12
- 13
- 14
- 15
- 16

I

ROUND STAND-OFFS

SDPSI

THREADED
SWAGE TYPE
1/4 O.D.

PHONE: 516.328.3300 • FAX: 516.326.8827 • WWW.SDP-SI.COM



R

T

► **MATERIAL:**
Brass, Zinc Plated

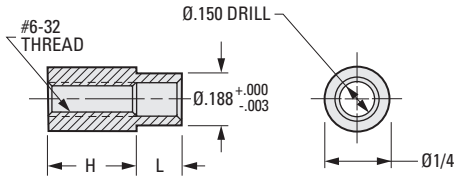


1

2

3

4



5

INCH COMPONENT

Catalog Number	H Height	L Length	Panel Thickness
A 9B43-B104	1/8	.075	1/32
A 9B43-B106	3/16	.075	1/32
A 9B43-B108	1/4	.075	1/32
A 9B43-B112	3/8	.075	1/32
A 9B43-B116	1/2	.075	1/32
A 9B43-B204	1/8	.105	1/16
A 9B43-B206	3/16	.105	1/16
A 9B43-B208	1/4	.105	1/16
A 9B43-B212	3/8	.105	1/16
A 9B43-B216	1/2	.105	1/16
A 9B43-B308	1/4	.135	3/32
A 9B43-B312	3/8	.135	3/32
A 9B43-B404	1/8	.165	1/8
A 9B43-B406	3/16	.165	1/8
A 9B43-B408	1/4	.165	1/8
A 9B43-B412	3/8	.165	1/8
A 9B43-B416	1/2	.165	1/8
A 9B43-B516	1/2	.195	5/32
A 9B43-B608	1/4	.230	3/16
A 9B43-B612	3/8	.230	3/16
A 9B43-B616	1/2	.230	3/16

8

9

10

11

12

13

14

15

16

HEXAGONAL STAND-OFFS

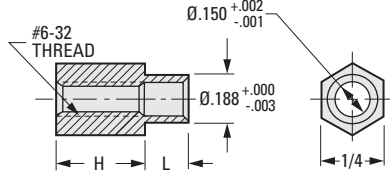


THREADED
SWAGE TYPE

PHONE: 516.328.3300 • FAX: 516.326.8827 • WWW.SDP-SI.COM

> MATERIAL:

303 Stainless Steel



INCH COMPONENT

Catalog Number	H Height	L Length	Panel Thickness
*S5921Y-SO10-01	1/8	.075	1/32
S5921Y-SO10-05	3/16	.075	1/32
S5921Y-SO10-09	1/4	.075	1/32
S5921Y-SO10-17	3/8	.075	1/32
S5921Y-SO10-25	1/2	.075	1/32
*S5921Y-SO10-02	1/8	.105	1/16
S5921Y-SO10-02A	1/8	.105	1/16
S5921Y-SO10-06	3/16	.105	1/16
S5921Y-SO10-10	1/4	.105	1/16
S5921Y-SO10-18	3/8	.105	1/16
S5921Y-SO10-26	1/2	.105	1/16
S5921Y-SO10-03A	1/8	.135	3/32
S5921Y-SO10-07	3/16	.135	3/32
S5921Y-SO10-11	1/4	.135	3/32
S5921Y-SO10-19	3/8	.135	3/32
S5921Y-SO10-27	1/2	.135	3/32
S5921Y-SO10-04A	1/8	.165	1/8
S5921Y-SO10-08	3/16	.165	1/8
S5921Y-SO10-12	1/4	.165	1/8
S5921Y-SO10-20	3/8	.165	1/8
S5921Y-SO10-28	1/2	.165	1/8
S5921Y-SO10-29	1/8	.230	3/16
S5921Y-SO10-30	3/16	.230	3/16
S5921Y-SO10-31	1/4	.230	3/16
S5921Y-SO10-32	3/8	.230	3/16
S5921Y-SO10-33	1/2	.230	3/16

* Items with #4-40 thread.

- I
- R
- T
- 1
- 2
- 3
- 4
- 5
- 6
- 7
- 8
- 9
- 10**
- 11
- 12
- 13
- 14
- 15
- 16

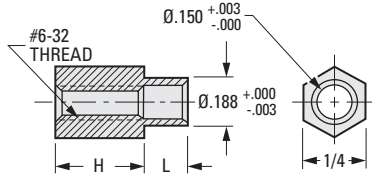
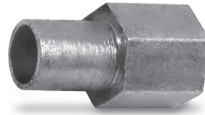
HEXAGONAL STAND-OFFS



THREADED
SWAGE TYPE

PHONE: 516.328.3300 • FAX: 516.326.8827 • WWW.SDP-SI.COM

> **MATERIAL:**
Brass, Zinc Plated



INCH COMPONENT

Catalog Number	H Height	L Length	Panel Thickness
A 9B43-C104	1/8	.075	1/32
A 9B43-C106	3/16		
A 9B43-C108	1/4		
*A 9B43-C116	1/2		
A 9B43-C206	3/16	.105	1/16
A 9B43-C208	1/4		
A 9B43-C212	3/8		
A 9B43-C216	1/2		
A 9B43-C304	1/8	.135	3/32
A 9B43-C308	1/4		
A 9B43-C312	3/8		
A 9B43-C404	1/8		
A 9B43-C406	3/16	.165	1/8
A 9B43-C412	3/8		
A 9B43-C606	3/16		
A 9B43-C608	1/4		
A 9B43-C612	3/8	.230	3/16
A 9B43-C616	1/2		

* To be discontinued when present stock is depleted.

