

TANDEM UNITIZED CENTER BOLT MOUNTS



FOR LOADS OF 150 TO 900 lbf
TANDEM TYPE

PHONE: 516.328.3300 • FAX: 516.326.8827 • WWW.SDP-SI.COM

> MATERIAL:

- Outer Body** - Natural Rubber Load-Carrying Member
- Spacer** - Steel, Tubular Rolled

> INSTALLATION:

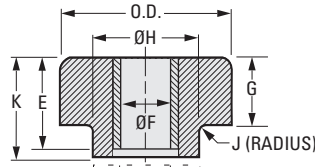
- Lubricate mount and socket with water or rubber lubricant.
- Insert into socket, hand rotate with axial force.
- If necessary, use driving bolt. Care must be taken that the driving bolt does not overhang the steel sleeve O.D.

> SELECTION CRITERIA:

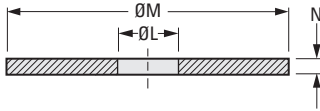
Calculate static load. Select a mount of equal or greater capacity. For dynamic loads greater than 3X static load, select next larger size.



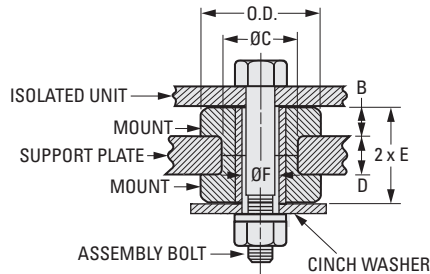
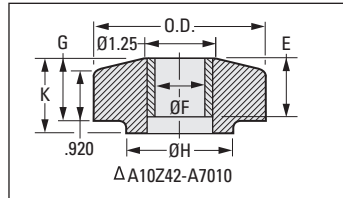
Preassembly Dimensions



SHOWN FOR MOUNTING ORIENTATION



Cinch Washer
Recommended Dimensions



Tandem Mounting

INCH COMPONENT

Catalog Number	Nominal Load Rating Axial lbf	Nominal Deflection Rating Axial in.	O.D.	B	C	D	E	F Dia.	G	H Dia.	J	K	L Dia.	M Dia.	N Min.
A10Z42-A3010	150	.010	1.78	.38	1.12	.38	.59	.52	.43	1.15	—	.63	.52	1.75	.10
A10Z42-A5020	425	.015	2.58	.87	1.50	.50	1.05	.64	.92	1.58	.06	1.17	.64	2.50	.15
*A10Z42-A6010	500	.018	3.00	.75	1.81	.75	1.16	.64	.79	1.87	.06	1.19	.64	3.00	.19
ΔA10Z42-A7010	900	.080	3.75	.74	2.25	.75	1.13	.77	1.14	2.28	—	1.52	.77	4.00	.25

* Chamfer at one end 22.50° X .20.

I

R

T

1

2

3

4

5

6

7

8

9

10

11

12

13

14

15

16